

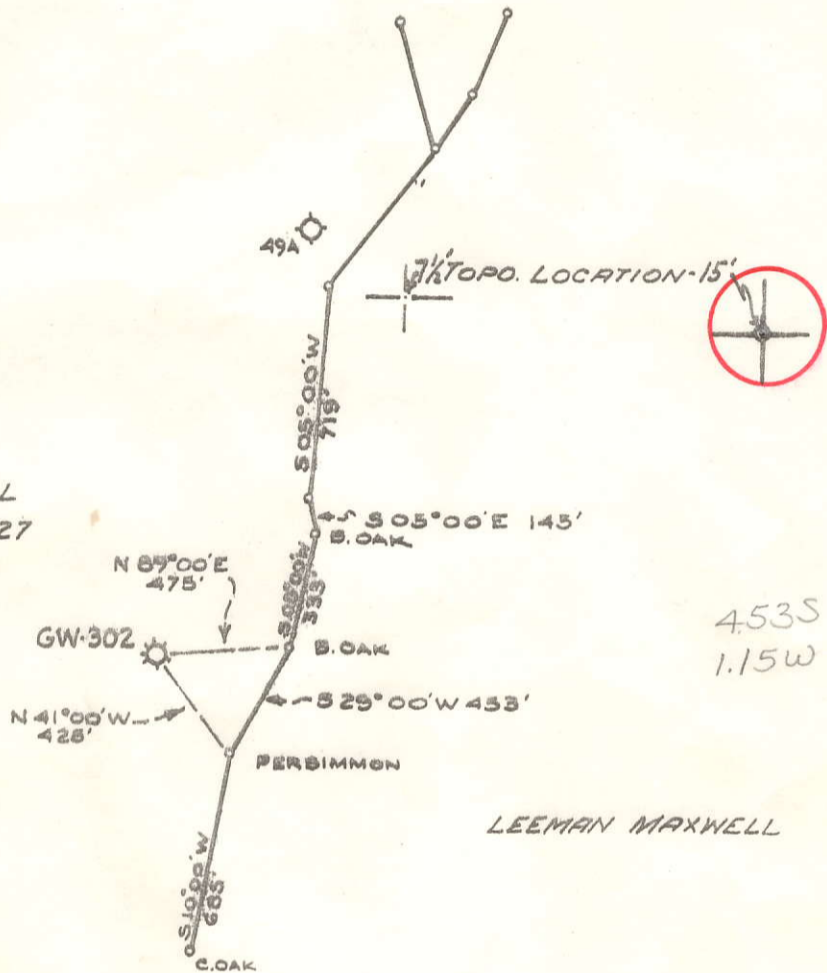
Plot  Log  Card  CSD  Mflm

P. & A. 5/2/74CEN

LATITUDE (7 1/2') 39° 17' 30"  
(15') 39° 20'

LONGITUDE 80° 45'

LEWIS MAXWELL  
2654.88 ± W.V 427



4.535  
1.15W

LEEMAN MAXWELL

GW-294

**CERTIFICATE**

"I, the undersigned, hereby certify that this map is correct to the best of my knowledge and belief and shows all the information required by paragraph 6 of the rules and regulations of the oil and gas section of the mining laws of West Virginia."

Minimum degree of accuracy is one part in 200

Signed Donald J. Gay L.S. #247

- NEW LOCATION
- RECONDITION
- DRILL DEEPER
- ABANDONMENT used 5-2-74

COMPANY CITIES SERVICE OIL COMPANY  
 ADDRESS BOX 979 CHARLESTON, W.VA  
 FARM LEWIS MAXWELL  
 MAP \_\_\_\_\_ ACRES 2654.88 LEASE NO. WV 427  
 WELL (FARM) NO. A-62 SERIAL NO. GW-302  
 ELEVATION (SPIRIT LEVEL) 1062'  
 QUADRANGLE WEST UNION - 7 1/2' & 15' SE  
 COUNTY DODDRIDGE DISTRICT WEST UNION  
 POINT OF PROVEN ELEVATION USGS 860

STATE OF WEST VIRGINIA  
 DEPARTMENT OF MINES  
 OIL AND GAS DIVISION  
 CHARLESTON  
**WELL LOCATION MAP**

FILE NO. Dod-41-p

+ DENOTES LOCATION OF WELL ON UNITED STATES TOPOGRAPHIC MAPS SCALE 1 TO 24,000 LATITUDE AND LONGITUDE LINES BEING REPRESENTED BY BORDER LINES AS SHOWN. 47-017

- DENOTES ONE INCH SPACES ON BORDER LINE OF ORIGINAL TRACING

FILE NO. \_\_\_\_\_ DRAWING NO. W-4-74

DATE APRIL 29, 1974 SCALE 1" = 660'

JUN 5 1974

CASING AND TUBING			PACKERS		GAS, WATER AND OIL RECORD				
SIZE	PUT IN WELL	PULLED CASING FT.	SIZE	MAKE	SET AT	LIQUID OR GAS	DEPTH	FT. RAISED IN HOLE	VOLUME
8 1/2"	319'5"	319'5"				in Gas SAND	1140		
8 1/2"	1104'6"	1104'6"				Little Gas	1602		
6 5/8"	1784'9"					Little Gas	1866	72 = 19/10 W 2" = 213 #	P.P. 340
						Gas	1895		
						Gas	2486		
						3/ Oil	2497		
						Little Gas	2494		

DODD 41

WEST UNION-7-S.E

RECORD OF SHOT							
SHOT	FROM	TO	SAND	TYPE OF EXPLOSIVE	QUANTITY	PRODUCTION BEFORE SHOT	PRODUCTION AFTER SHOT
							Not shot

DEPTH	DESCRIPTION	LIQUID OR GAS	DEPTH	FT. RAISED IN HOLE	VOLUME
6-19 to 7-9-57	Lime		45	60	15
	Red Rock		60	110	50
	Lime		110	128	18
	Coal		128	130	2
	Slate & Shells		130	160	30
	Lime		160	180	20
	Red Rock		180	210	30
	Lime		210	230	20
	Red Rock		230	246	16
	Sand		246	300	54
	White Slate		300	315	15
	Slate		315	325	10
	Lime		325	360	35
	Slate & Shells		360	415	55
	Lime		415	445	30
	Slate		445	469	24
	Lime		469	506	37
	Slate		506	515	9
	Dark Lime		515	545	30
	Red Rock		545	550	5
	Lime		550	577	27
	Red Rock		577	587	10
	Lime		587	614	27
	Red Rock		614	628	14
	Lime		628	660	32
	Red Rock		660	665	5
	Lime		665	695	30
	Red Rock		695	705	10
	Lime		705	727	22
	Slate & Shells		727	760	33
	Red Rock		760	790	30
	Lime		790	825	35
	Slate		825	835	10
	Lime		835	859	24
	Slate		859	876	17
	Sand		876	905	29
	Lime		905	935	30
	Black slate		935	950	15
	Little Dunkard Sand		950	976	26
	Slate		976	982	6
	Lime		982	1015	33
	White Slate		1015	1027	12
	Lime		1027	1044	17
	Slate		1044	1055	11
	Big Dunkard Sand		1055	1110	55
	Slate		1110	1120	10
	Lime		1120	1140	20
	Little gas sand		1140	1160	20
	Slate		1160	1170	10
	Critty Lime		1170	1185	15
	Sand		1185	1215	30
	Slate		1215	1250	35
	Lime		1250	1280	30
	Black Slate		1280	1290	10
	Lime		1290	1305	15
	Black Slate		1305	1327	22
	Critty Lime		1327	1347	20
	Slate & Shells		1347	1400	53
	Lime		1400	1443	43
	Slate & Shells		1443	1457	14
	Lime		1457	1500	43
	Slate & Shells		1500	1520	20
	2nd. Salt Sand		1520	1550	30

Big Injun 14,900 cu. ft increase in  
 Gordon 18 MCF  
 Gordon 4 MCF  
 TOTAL GAS 24 MCF

Red?  
 452  
 244  
 252

8100	---	Critty Lime	1327	1327	22
---	---	Slate & Shells	1347	1400	53
---	---	Lime	1400	1443	43
8200	---	Slate & Shells	1443	1457	14
---	---	Lime	1457	1500	43
---	---	Slate & Shells	1500	1520	20
---	---	2nd. Salt Sand	1520	1550	30
---	---	Slate & Shells	1550	1580	30
---	---	3rd. Salt Sand	1580	1613	33

Lime	1613	1621	8
White Slate	1621	1635	14
Lime - dark	1635	1667	32
Slate	1667	1680	13
Maxon Sand	1680	1685	5
Pink Rock	1685	1697	12
Slate	1697	1702	5
Little Lime	1702	1712	10
Slate	1712	1728	16
Blue Monday	1728	1731	3
Pencil Cave	1731	1746	15
Big Lime	1746	1751	5
Big Injun Sand	1751	1810	59
Slate	1810	1899	89
Blue Lime	1899	1910	11
Slate	1910	1965	55
Lime - hard	1965	1972	7
Gents Sand	1972	2030	58
Lime	2030	2163	133
Slate	2163	2198	35
Lime	2198	2235	37
Slate	2235	2279	44
Lime	2279	2284	5
Slate	2284	2430	146
Lime	2430	2450	20
Slate	2450	2460	10
Gordon Stray Sand	2460	2465	5
Black Slate	2465	2477	11
Gordon Sand	2477	2484	7
Slate	2484	2492	8
Gordon Sand	2492	2493	1
Slate	2493	2498	5
	2498	2503	5
TOTAL DEPTH	2503		

1504  
 B.L. - 1504  
 GDN. - 63 #  
 TOTAL 213 #

B.M. 2445' 49' over Gordon

CODE NO. G. W. 302 NAME Lewis Maxwell well # 62-A.

LEASE NO. G-32-A.

2654-A DISTRICT Smithburg

2-DL-1

N. 289.19

COUNTY Doddridge 41

RECORD OF WELL USE

VOLUME AND PRESSURE TESTS

WATERS COMMENCED Sept. 12, 1932 COMPLETED Oct. 22, 1932

DATE SPUNDED Sept. 14, 1932 DATE SHUT IN

RIG DRILLERS Contractor - F. S. Greathouse

W. O. NO. COST COMPLETE: 7264.09 I. R. NO. C.P. # 4,462.75

COST PER FOOT: 2.90

DATE CONNECTED 10-25-32

DATE PLUGGED DATE AB'D.

TOTAL DEPTH 2503'

C. H. ELEVATION 1062'

HOW OBTAINED

Producing Horizon - Big Injun 150 M - R.P. 340\*48 Hours Gordon 63 M - Not taken

YEARS January February March April May June July August September October November December Total on line

Table with columns: DATE, LINE PRES., MINUTES (1-5), TIME SHUT IN, ROCK, VOLUME, SAND. Contains monthly well use data from 1932 to 1935.

VOLUME AND PRESSURE TESTS

Main data table with columns: DATE, LINE PRES., MINUTES (1-5), TIME SHUT IN, ROCK, VOLUME, SAND, REMARKS. Contains detailed test results and well status notes.

USE

VOLUME AND PRESSURE TESTS

DATE	LINE PRES.	MINUTES					10	20	30	TIME SHUT IN	ROCK	VOLUME	SAND	REMARKS
		1	2	3	4	5								
6-1-44	5					2	11	18			14.900	R.S.D.	Flow 30 min	
12-1-44						2	10	17			14.900	"	"	
6-1-45	8					3	10	18			14.900	"	"	
12-1-45	8					2	9	16			14.900	"	"	
6-1-46	8					3	10	17			14.900	"	"	
12-1-46	9					4	9	17			14.900	"	Bailed 1/2 Hr.	
6-1-47	8					3	5	10	19		14.900	"	Flow 1/2 hr. - Bailed	
12-1-47	8	-	-	-	-	2	4	9	18		14.900	"	"	
6-1-48	8	-	-	-	-	2	4	10	18		14.900	"	"	
12-1-48	10	-	-	-	-	2	3	10	15		10.550	"	"	
6-1-49	6	-	-	-	-	1	2	7	14		14.900	"	" 1/2 hr.	
12-1-49	5	-	-	-	-	1	2	7	13		14.900	"	" 1/2 hr.	
6-1-50	6	-	-	-	-	1	2	3	8	12	14.900	"	"	
12-20-50	6	-	-	-	-	1	2	7	12		14.900	"	" 1/2 hr.	
6-9-51	6	-	-	-	-	1	2	8	12		14.900	"	"	
12-10-51	5	-	-	-	-	1	2	7	12		14.900	"	"	
6-18-51	6	-	-	-	-	1	2	7	12		14.900	"	"	
12-19-51	5	-	-	-	-	1	2	8	13		14.900	"	"	
6-16-52	5	0	0	0	0	1	2	3	8	12	14.900	"	"	
12-23-53	6	0	0	0	0	1	2	8	13		14.900	"	"	
6-8-54	8	0	0	0	0	1	2	8	13		14.900	"	"	
7-28-54	9	9	9	9	9	10	12	16	18					
9-14-54	9	9	9	9	9	11	13	16	18					
12-15-54	6	0	0	0	0	1	2	3	8	13	14.900	"	"	
6-15-55	7	0	0	0	0	1	2	3	7	12	14.900	"	"	
8-29-55	8	8	8	8	8	9	10	12	16	18				
11- -55		app 600' ad 6 mos									1 da 102			
12-21-55	12	0	0	0	0	1	2	3	8	13	14.900	"	30 bal oil 6 mos.	
1-25-56	11	11	11	11	11	12	14	17	19					
2-24-56	6	6	6	6	6	7	8	11	18					
3-15-56	7	7	7	7	8	9	11	14	18					
6-21-56	6	0	0	0	0	1	2	3	8	13	14.900	"	"	
8-23-56	7	7	7	7	8	9	11	16	18					
12-12-56	8	0	0	0	0	1	2	3	8	13	14.900	"	"	
6-30-57		Record 6-19 to 7-4-57									15 M	Estimated		
6-19										7" 1 da 102	15 M			
										3" 18 hr 12				
7-8-57											24 MCF			
10-28-57	9	9	9	10	11	12	14	23	32					

REMARKS  
a little oil

1/2 hr.  
1/2 Hr.  
1/2 "  
1/2 "  
1/2 "  
1/2 "  
1/2 "  
1/2 "  
1/2 "  
1/2 "  
1/2 "  
1/2 "

30 bal oil 6 mos.

Estimated

7" 1 da 102  
3" 18 hr 12

24 MCF