

LATITUDE 39° 22' 30"

80° 40'

LONGITUDE

OGIS
7.5' loc



T'S OGIS topo location

7.5' loc 2.13 S 15' loc 5.01 S
0.05 W (calc.) 0.05 W

Company _____

Farm Ramza B. Ash I

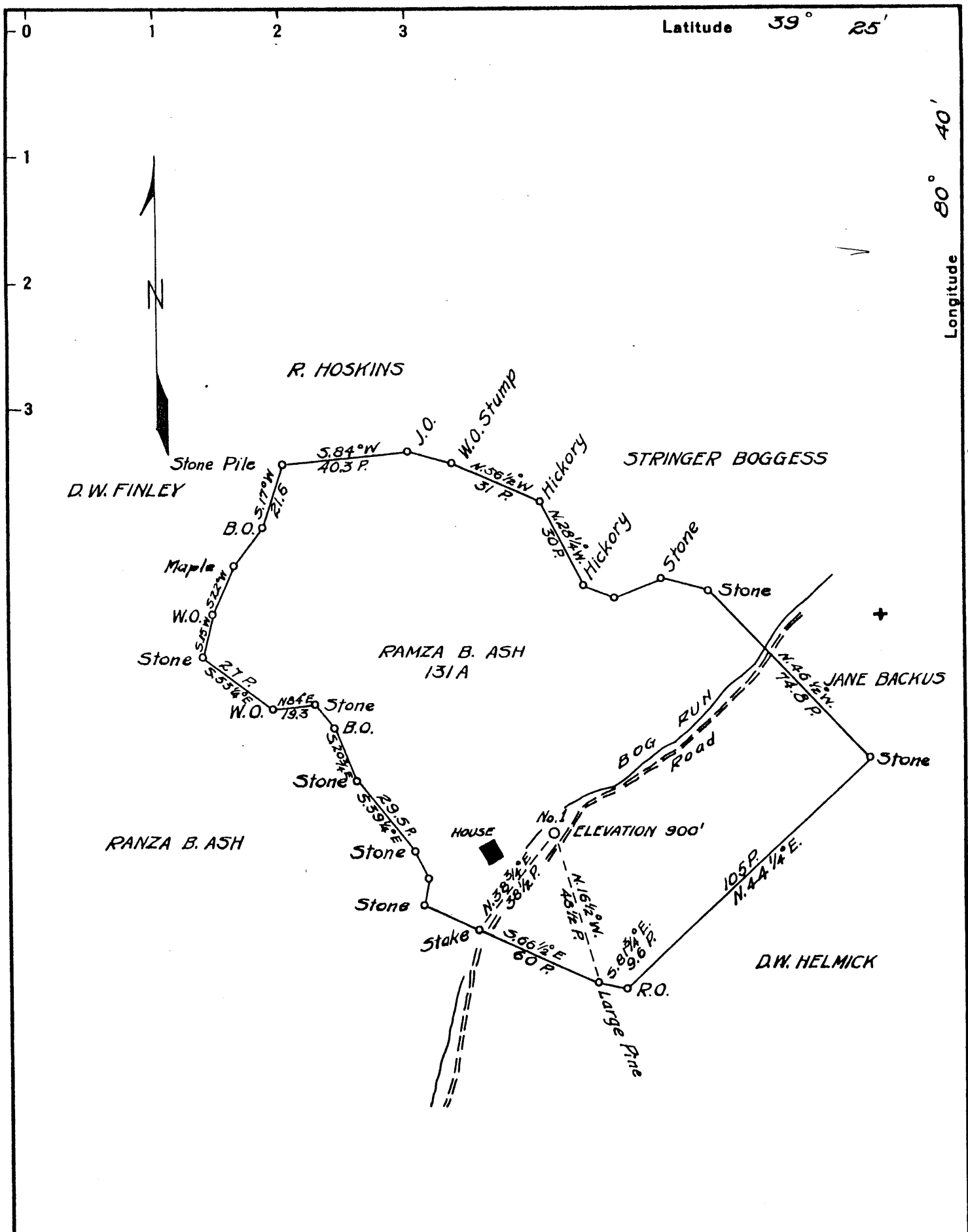
Quad Smithburg Centerpoint-wc

County Dodd

District Grant

WELL LOCATION MAP

File No. 017-65-051g+DD



Surveyed by D.G. McGregor

Company	R.J. & J.R. BROADWATER
Address	TOLLGATE, W.VA.
Farm	RAMZA B. ASH
Tract	ONE Acres 131 Lease No.
Well (Farm) No.	ONE Serial No.
Quadrangle	CENTERPOINT
County	DODDRIDGE
District	GRANT
Engineer	B.F. Pinchard
Engineer's Registration No.	648
File No.	Drawing No.
Date	June 12, 1936 Scale 1 in. = 40 Poles

STATE OF WEST VIRGINIA
 DEPARTMENT OF MINES
 OIL AND GAS DIVISION
 CHARLESTON

WELL LOCATION MAP
 FILE NO. DOD - 65

+ Denotes location of well on United States Topographic Maps, scale 1 to 62,500, latitude and longitude lines being represented by border lines as shown.

- Denotes one inch spaces on border line of original tracing.

WEST VIRGINIA DEPARTMENT OF MINES
OIL & GAS DIVISION
W E L L R E C O R D

Permit No. DOD-65-D
Centerpoint Quad

Dry

D. G. Pigott
W. Va.

Company West Union, Acres 131
Address Ranza B. Ash Elev. 900'
Farm Drilling deeper.
Well No. 1 Grant, County Doddridge
District Ranza Ash
Surface Ranza Ash
Mineral Ranza Ash
Commenced Sept. 7, 1951
Completed Sept. 18, 1951
Volume Dry

Drilling began at	2085	2085
Slate & Shells	2550	2550
Gordon Stray	2564	2564
Slate	2574	2574
Gordon	2577	2577
Slate	2615	2615
Total Depth		

530' - DD - 4g