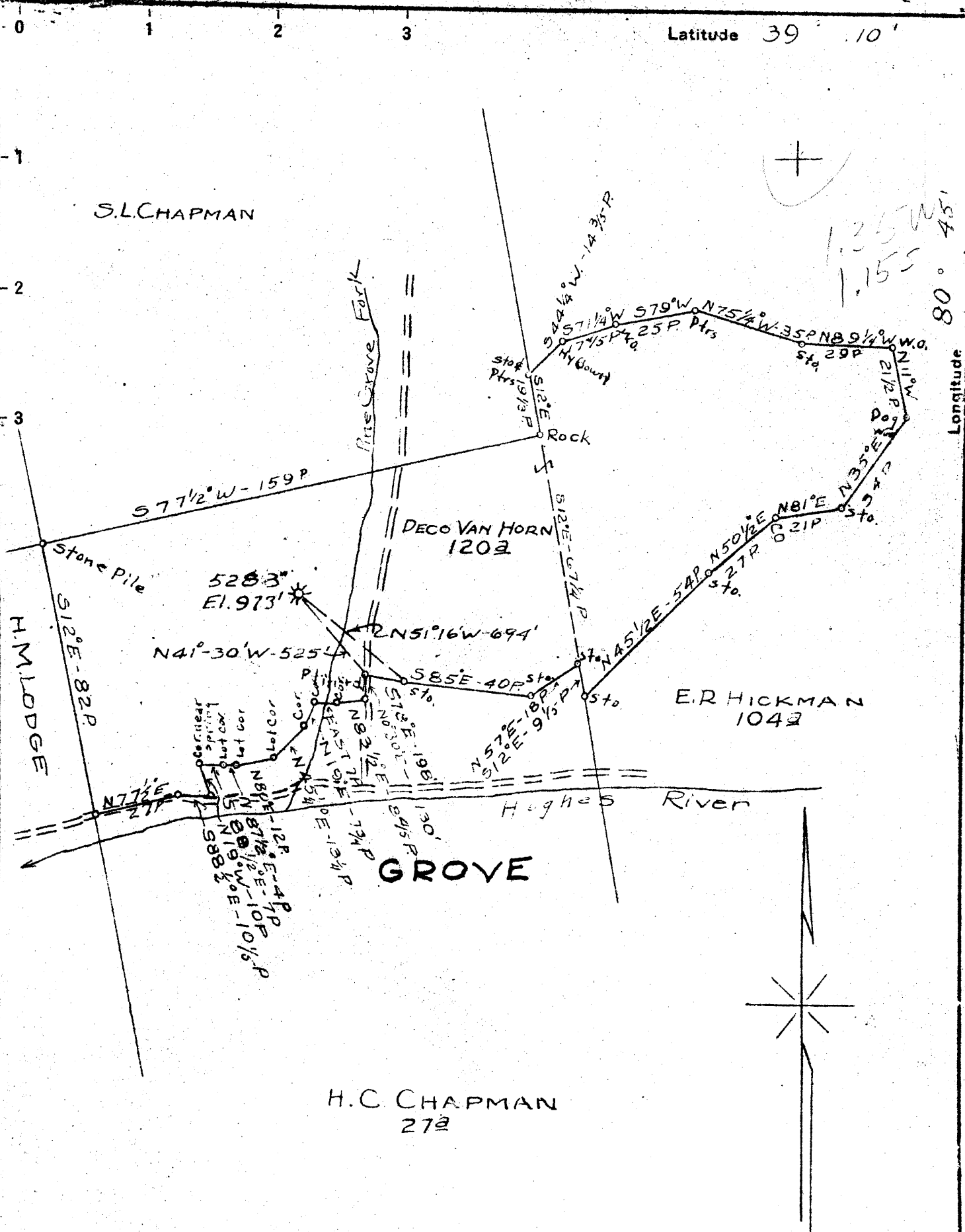


Latitude 39 10'

Longitude 80 45'



- New Location
- Drill Deeper
- Abandonment

Map Sh. 68 521 W10 FB. 861 P. 13-5

Company	HOPE NATURAL GAS CO.
Address	CLARKSBURG, W. VA.
Farm	DECO VAN HORN
Tract	Acres 120 Lease No. 13413
Well (Farm) No.	Serial No. 5283
Elevation (Spirit Level)	973'
Quadrangle	HOLBROOK EC
County	DODDRIDGE District COVE
Engineer	W.M. Brewer
Engineer's Registration No.	900
File No.	Drawing No.
Date	5-20-47 Scale 1"=40 FEET

STATE OF WEST VIRGINIA
 DEPARTMENT OF MINES
 OIL AND GAS DIVISION
 CHARLESTON

WELL LOCATION MAP
 FILE NO. DOD-179-8

+ Denotes location of well on United States Topographic Maps, scale 1 to 62,500, latitude and longitude lines being represented by border lines as shown.

- Denotes one inch spaces on border line of original tracing.

WEST VIRGINIA DEPARTMENT OF MINES
OIL & GAS DIVISION
W E L L R E C O R D

Permit No. Dod 179 D
Holbrook Quad.
Company
Address
Farm
Location
Well No.
District
Surface
Mineral
Commenced
Completed
Water
Volume

Hope Natural Gas Company
445 West Main St., Clarksburg, W.Va. 10 226 Pld.
Deco Van Horn Acres 120 8 1/2 1178 1178
5283 Elev. 973 6 5/8 1890 Pld.
Cove Doddridge County Casing not cemented
June 19, 1918 Coal at 115' 48"
Aug. 4, 1918 Deeper 8-22-47
None recorded
Dry

Dry Hole
CASING & TUBING

DRILLED DEEPER

Coal	115	119	
Little Dunkard	800	860	
Big Dunkard	900	940	
Gas Sand	1000	1010	
First Salt	1420	1550	
Second Salt	1608	1656	
Maxon	1704	1740	
Little Lime	-1745	1770	
Pencil Cave	1770	1780	
Big Lime	-1780	1853	show oil 1780-1786
Big Injun	1853		
Total Depth		1785	Gas 1856-1865

Started drilling		1785
Big Injun		1925
Shale	1925	1930
Squaw	1930	1945
Slate	1945	2045
Lime	2045	2155
Slate Shell	2155	2455
Gordon Stray	2455	2458
Slate	2458	2473
Gordon Sand	2473	2476
Slate	2476	2600
Total Depth		2600

1853
1780
150

1930
970

957