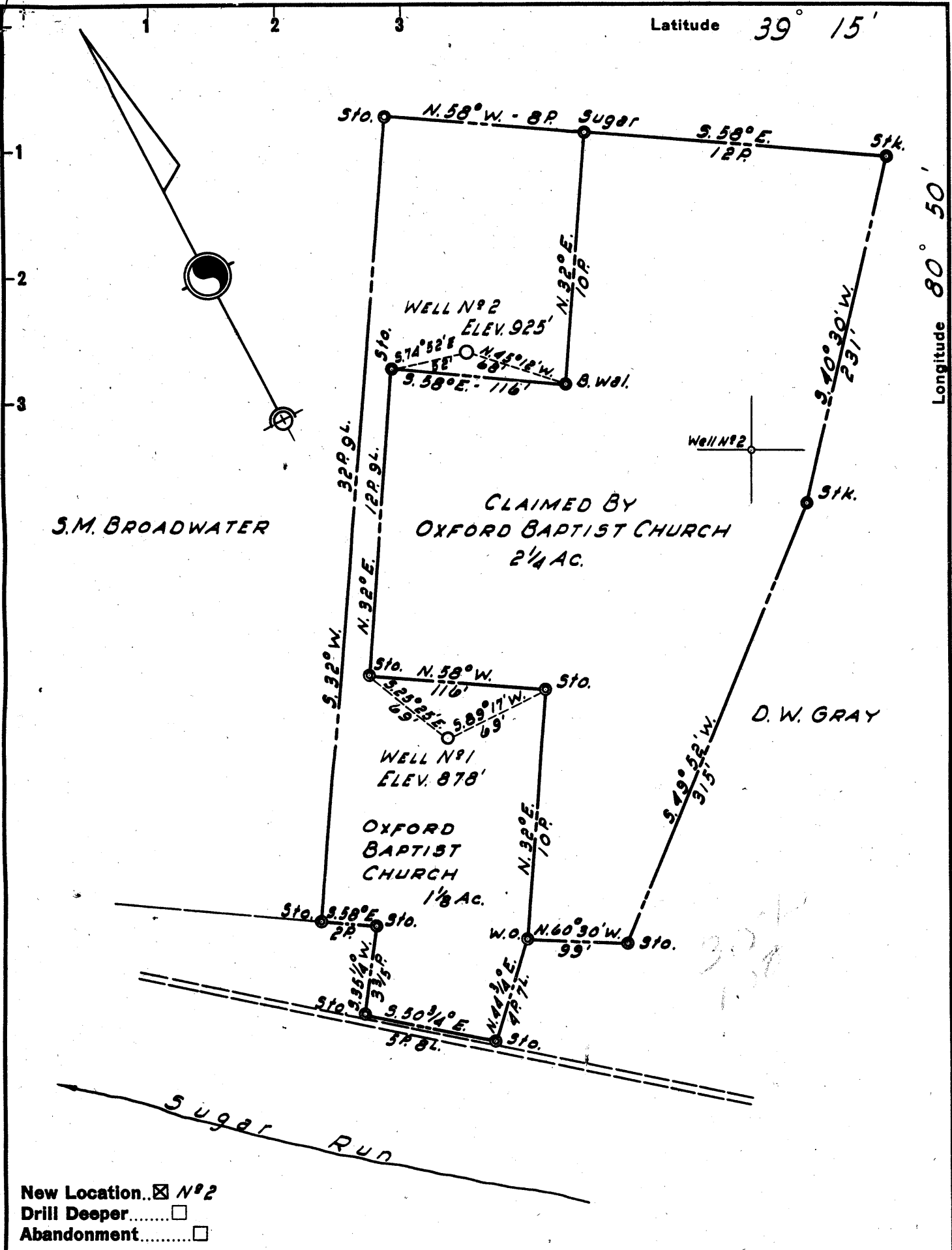


Latitude 39° 15'

Longitude 80° 50'



New Location.. N^o 2
 Drill Deeper.....
 Abandonment.....

Company R. J. HUNTER
 Address 106 NEELY AVE., WEST UNION, W.VA.
 Farm OXFORD BAPTIST CHURCH
 Tract _____ Acres 3 3/8 Lease No. _____
 Well (Farm) No. 2 Serial No. _____
 Elevation (Spirit Level) 925'
 Quadrangle HOLBROOK NC
 County DODDRIDGE District SOUTHWEST
 Engineer JOHN W. HAMILTON
 Engineer's Registration No. 2274
 File No. _____ Drawing No. _____
 Date SEPT. 23, 1958 Scale 1" = 5 POLES

STATE OF WEST VIRGINIA
 DEPARTMENT OF MINES
 OIL AND GAS DIVISION
 CHARLESTON

WELL LOCATION MAP
 FILE NO. DOD-265 #2

+ Denotes location of well on United States Topographic Maps, scale 1 to 62,500, latitude and longitude lines being represented by border lines as shown.

- Denotes one inch spaces on border line of original tracing.

This Well Falls Closely to Dod. 260
 See Plan

6-6 33



STATE OF WEST VIRGINIA
DEPARTMENT OF MINES
OIL AND GAS DIVISION 3

*20.1 to 100 ft on
from 10-foot chisel
at Point Road-265
Cancelled*

Quadrangle Halbrook

WELL RECORD

Permit No. DD-265

Oil or Gas Well Oil
(KIND)

Company R. J. Hunter
Address West Union, W. Va.
Farm Oxford Baptist Church Acres 2
Location (waters) branch of Hughes River
Well No. 2 Elev. 925
District South West County Doddridge
The surface of tract is owned in fee by Oxford Baptist Church Address Oxford, W. Va.
Mineral rights are owned by Same Address _____

Casing and Tubing	Used in Drilling	Left in Well	Packers
Size			Kind of Packer
16			
13	Conductor 18ft	18	
10	204		Size of
8 1/4	1015		
6 3/4	1720	1720	Depth set
5 3/16			
3			Perf. top
2	1844	1844	Perf. bottom 12'
Liners Used			Perf. top
			Perf. bottom

Drilling commenced Sept. 1, 1958
Drilling completed Sept. 18, 1958
Date Shot _____ From _____ To _____
With _____

Open Flow _____ /10ths Water in _____ Inch
_____ /10ths Merc. in _____ Inch
Volume _____ Cu. Ft.

Rock Pressure 700 lbs. hrs.
Oil 48 bbls., 1st 24 hrs.

WELL ACIDIZED By Boxell

CASING CEMENTED _____ SIZE _____ No. Ft. _____ Date _____

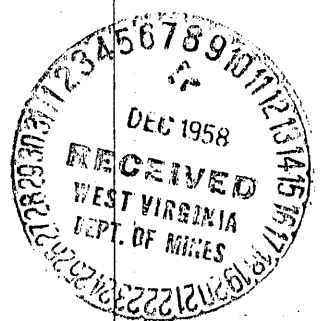
COAL WAS ENCOUNTERED AT _____ FEET _____ INCHES
_____ FEET _____ INCHES FEET _____ INCHES
_____ FEET _____ INCHES FEET _____ INCHES

WELL FRACTURED _____

RESULT AFTER TREATMENT Oil flowed through casing-head and tubing

ROCK PRESSURE AFTER TREATMENT _____
Fresh Water _____ Feet Salt Water _____ Feet

Formation	Color	Hard or Soft	Top	Bottom	Oil, Gas or Water	Depth	Remarks
Clay	yellow		1	60			
Slate/shells			60	120	Water	70	Hole full
Lime			120	150			
Rock	Red		150	180			
Slate/shells			180	215			
Red Rock			215	235			
Slate/lime			235	300			
Red Rock			300	320			
Lime			320	350			
Red Rock			350	385			
Slate/lime			385	415			
Sand			415	430			
Slate/lime			430	465			
Red Rock			465	480			
Slate/lime			480	510			
White Clay			510	580			
Red Rock			580	710			
Slate/lime			710	740			
Red Rock			740	770			
Gritty lime			770	840	Show of Oil	785	
Slate			840	880			
Red Rock			880	920			
Slate/shells			920	940			
Pink Rock			940	957			
Slate/lime			957	1045			
Sand			1045	1085			
Slate/lime			1085	1200			
Sand			1200	1225			
Black Slate/lime			1225	1275			



Sand 1275 (over) 1390 After 1365 Hole full

Formation	Color	Hard or Soft	Top $\bar{3}$	Bottom	Oil, Gas or Water	Depth Found	Remarks
Slate&lime			1390	1500			
Sand			1500	1530			
Black Slate&lime shells			1530	1625			
Sand			1625	1655			
Slate&lime			1655	1670			
lime&Sand			1670	1690			
lime Shells&Slate			1690	1720			
Lime			1720	1745			
Slate			1745	1800			
Lime			1800	1828			
Slate			1828	1831			
Lime			1831	1844	Oil&Gas	1834 to 1843	2bbl.hour
				<i>1844 Total Depth</i>			

Date December 4, 1958

APPROVED [Signature], Owner

By _____
(Title)