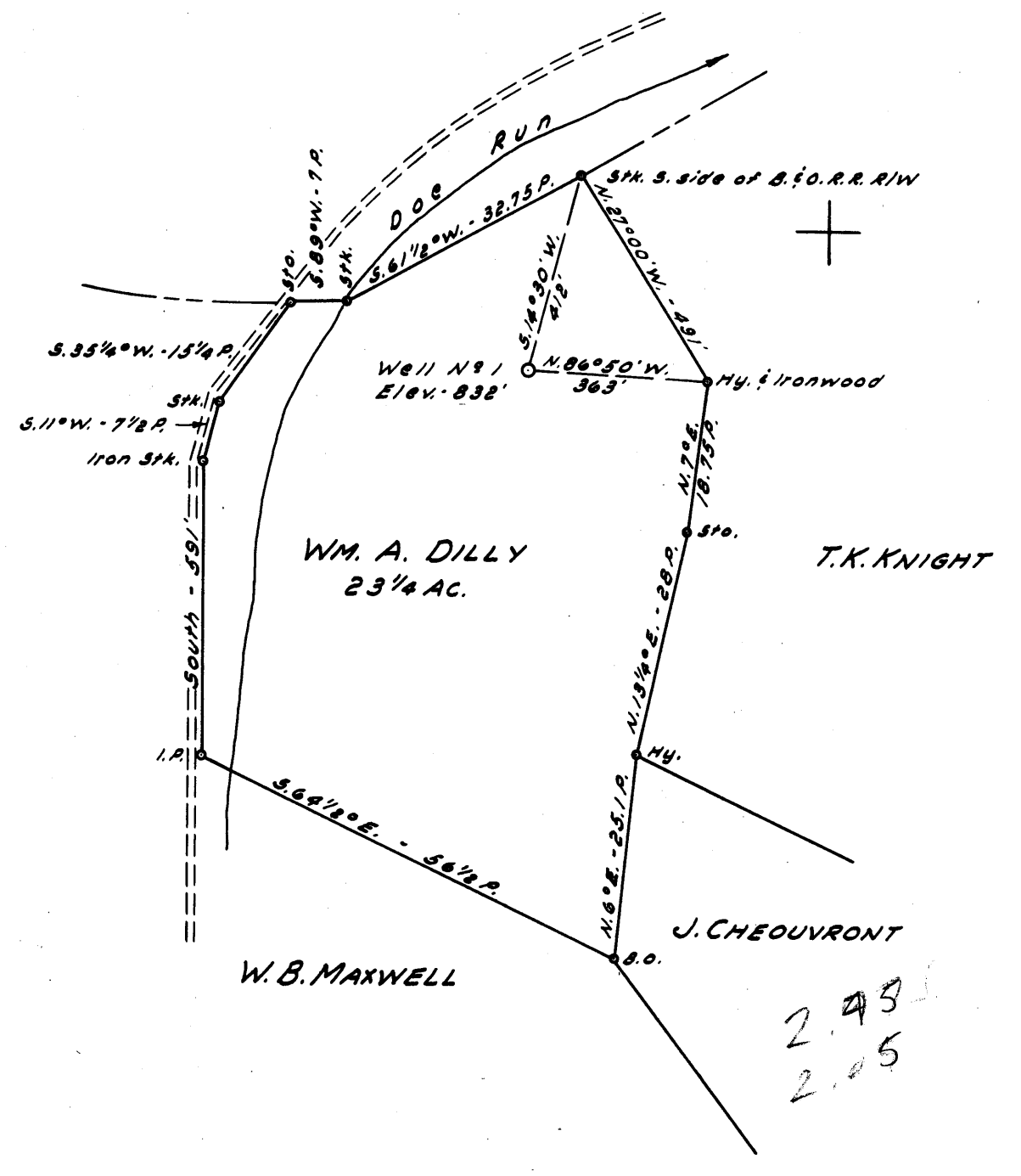


Latitude 39° 20'

Longitude 80° 45'



New Location   
 Drill Deeper   
 Abandonment

NOTE:

Wm. A. Dilly has 1/2 Oil and Gas  
 Lena Rogers has 1/2 Oil and Gas

Company WEST UNION DRILLING CO.  
1/2 CLARENCE POWELL

Address WEST UNION, W. VA.

Farm WM. A. DILLY

Tract \_\_\_\_\_ Acres 23 1/4 Lease No. \_\_\_\_\_

Well (Farm) No. 1 Serial No. \_\_\_\_\_

Elevation (Spirit Level) 832'

Quadrangle WEST UNION - 54 E

County DOODRIDGE District WEST UNION

Engineer JOHN W. HAMILTON

Engineer's Registration No. 2274

File No. \_\_\_\_\_ Drawing No. \_\_\_\_\_

Date MAR. 24, 1960 Scale 1" = 20 P.

STATE OF WEST VIRGINIA  
 DEPARTMENT OF MINES  
 OIL AND GAS DIVISION  
 CHARLESTON

WELL LOCATION MAP

FILE NO. DOD-341

+ Denotes location of well on United States Topographic Maps, scale 1 to 62,500, latitude and longitude lines being represented by border lines as shown.

- Denotes one inch spaces on border line of original tracing.

6-6 99



STATE OF WEST VIRGINIA  
DEPARTMENT OF MINES  
OIL AND GAS DIVISION 5

Quadrangle West Union

Permit No. DOD-341

WELL RECORD

Oil or Gas Well Gas  
(KIND)

Company West Union Drilling Co, Inc.  
Address West Union, W. Va.  
Farm W. A. Dilly Acres 23-1/4  
Location (waters) Doe Run  
Well No. 1 Elev. 832'  
District West Union County Doddridge  
The surface of tract is owned in fee by W. A. Dilly Address West Union, WVa.  
Mineral rights are owned by W. A. Dilly and Lena Rogers Address West Union, WVa.  
Drilling commenced April 14, 1960  
Drilling completed May 10, 1960  
Date Shot \_\_\_\_\_ From \_\_\_\_\_ To \_\_\_\_\_  
With \_\_\_\_\_  
Open Flow 3.43 /10ths Water in \_\_\_\_\_ Inch  
3" /10ths Merc. in \_\_\_\_\_ Inch  
Volume 2,929,000 Cu. Ft.  
Rock Pressure 620 lbs. 6 hrs.  
Oil No bbls., 1st 24 hrs.  
WELL ACIDIZED \_\_\_\_\_

Casing and Tubing	Used in Drilling	Left in Well	Packers
Size			Kind of Packer
16			
13			
10	90'		Size of
8 3/4	435'		
6 3/4	958'		Depth set
5 3/16	1758'	1758'	
3			Perf. top
2			Perf. bottom
Liners Used			Perf. top
			Perf. bottom

CASING CEMENTED YES SIZE 5" No. Ft. \_\_\_\_\_ Date \_\_\_\_\_  
15 Bags Cement and 12 Bags Aquajel  
COAL WAS ENCOUNTERED AT NO FEET \_\_\_\_\_ INCHES  
\_\_\_\_\_ FEET \_\_\_\_\_ INCHES FEET \_\_\_\_\_ INCHES  
\_\_\_\_\_ FEET \_\_\_\_\_ INCHES FEET \_\_\_\_\_ INCHES

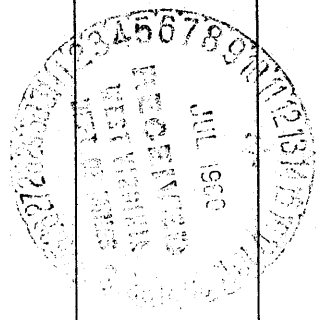
WELL FRACTURED \_\_\_\_\_

RESULT AFTER TREATMENT \_\_\_\_\_

ROCK PRESSURE AFTER TREATMENT \_\_\_\_\_

Fresh Water NONE Feet \_\_\_\_\_ Salt Water NONE Feet \_\_\_\_\_

Formation	Color	Hard or Soft	Top	Bottom	Oil, Gas or Water	Depth	Remarks
Clay			0	20			
Red Rock			20	40			
Slate			40	100			
Red Rock			100	130			
Sand			130	150			
Slate			150	190			
Lime			190	210			
Red Rock			210	225			
Slate			225	280			
Sand			280	305			
Slate			305	335			
Lime		Hard	335	350			
Slate			350	540			
Red Rock			540	545			
Slate			545	590			
Red Rock			590	610			
Slate			610	630			
Red Rock			630	655			
Slate			655	745			
Sand			745	755			
Slate			755	765			
Red Rock			765	810			
Slate & Shells			810	900			
Sand			900	925			
Slate	Black		925	950			
Sand			950	960			
Slate			960	973			
Sand			973	1050			
Slate			1050	1087			



Formation	Color	Hard or Soft	Top 5	Bottom	Oil, Gas or Water	Depth Found	Remarks
Sand			1087	1155			
Slate			1155	1170			
Sand			1170	1208			
Slate			1208	1265			
Sand			1265	1295			
Slate			1295	1365			
Sand			1365	1385			
Slate			1385	1480			
Sand			1480	1550			
Slate	Black		1550	1585			
Sand			1585	1612			
Slate	Black		1612	1655			
Slate	White		1655	1681			
Lime			1681	1709			
Sand			1709	1711			
Lime (Big)			1711	1795			
Sand			1795	1821	Gas	1816'	
Sand			1821	1832	Gas	1832'	
Sand		Hard	1832	1855-55	Gas	1850'	
Sand			1855	1865			