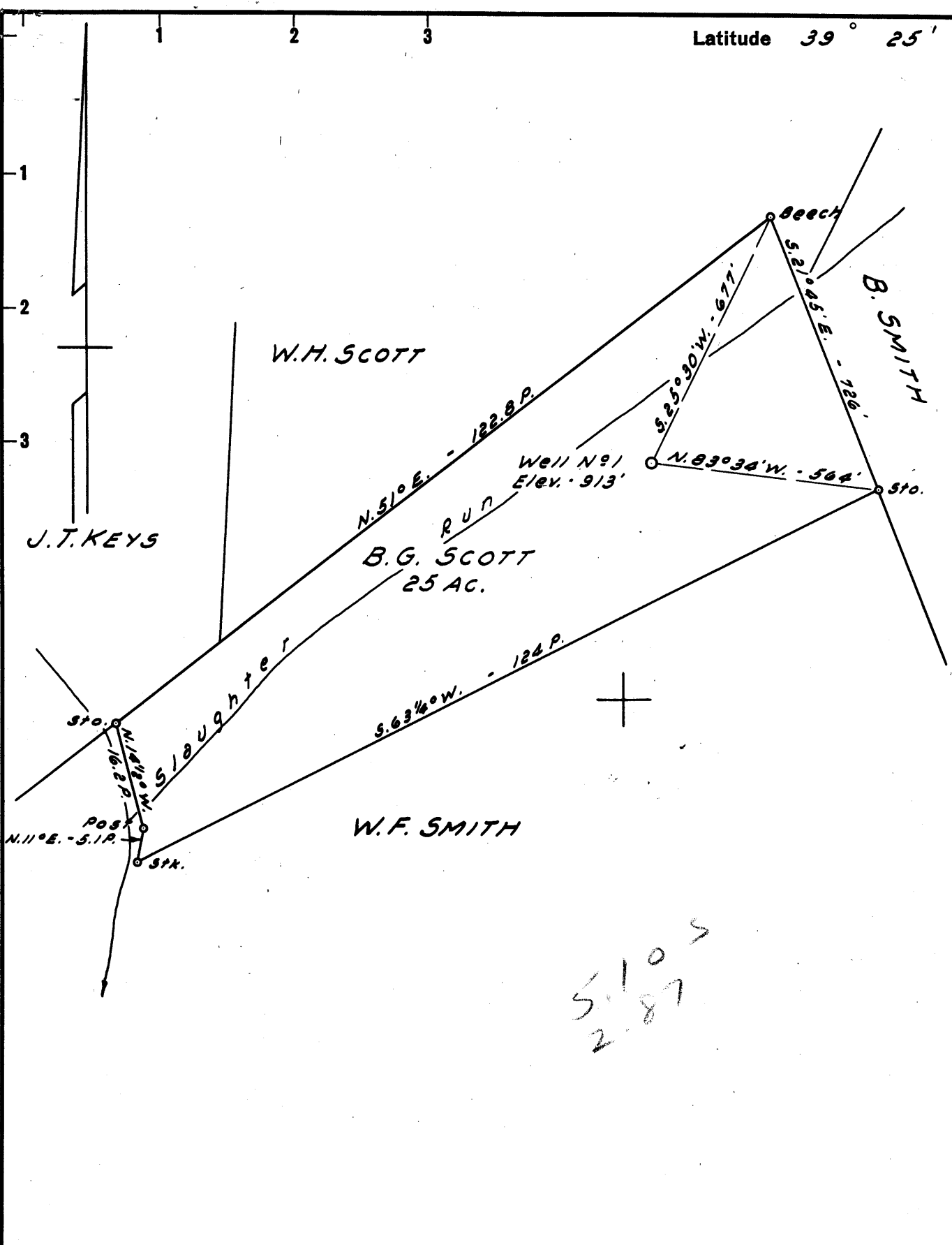


Latitude 39° 25'

Longitude 80° 45'



5105
2-87

- New Location
- Drill Deeper
- Abandonment

NOTE:
B.G. Scott owns the Surface
E.H. Dotson owns the Mineral Rights

Company ALPENIA OIL & GAS CO.
 Address 1/4 CLAUDE COTTRILLE
PENNSBORO, W. VA.
 Farm B.G. SCOTT
 Tract _____ Acres 25 Lease No. _____
 Well (Farm) No. 1 Serial No. _____
 Elevation (Spirit Level) 913'
 Quadrangle WEST UNION EC
 County DODDRIDGE District WEST UNION
 Engineer JOHN W. HAMILTON
 Engineer's Registration No. 2274
 File No. _____ Drawing No. _____
 Date APRIL 23, 1960 Scale 1" = 20 POLES

STATE OF WEST VIRGINIA
 DEPARTMENT OF MINES
 OIL AND GAS DIVISION
 CHARLESTON

WELL LOCATION MAP
 FILE NO. DOD-364

+ Denotes location of well on United States Topographic Maps, scale 1 to 62,500, latitude and longitude lines being represented by border lines as shown.
 - Denotes one inch spaces on border line of original tracing.



STATE OF WEST VIRGINIA
DEPARTMENT OF MINES
OIL AND GAS DIVISION 2

Quadrangle WEST UNION

Permit No. DOD 364

WELL RECORD

Oil or Gas Well Gas
(KIND)

Company Alphenia Oil And Gas Company
Address C/O. Claude Cottrille
Farm Penngboro, W.Va., Acres 25
Location (waters) Slaughters Run
Well No. 1 Elev. 913
District West Union County Dodridge
The surface of tract is owned in fee by B.G.Scott
Address West Union, W.Va
Mineral rights are owned by E.H.Dotson
Address Greenwood, W.Va.,
Drilling commenced May 20, 1960
Drilling completed July 28, 1960
Date Shot No From _____ To _____
With _____
Open Flow 20 /10ths Water in _____ Inch
_____ /10ths Merc. in _____ Inch
Volume 50,000 Cu. Ft.
Rock Pressure 35 lbs. 24 hrs.
Oil No bbls., 1st 24 hrs.
WELL ACIDIZED No
WELL FRACTURED August 11, 1960

Casing and Tubing	Used in Drilling	Left in Well	Packers
Size			Kind of Packer <u>None</u>
16			
13			
10			Size of _____
8 3/4	<u>396</u>	<u>Removed</u>	Depth set _____
6 5/8	<u>893</u>	<u>Removed</u>	
5 3/16		<u>1892</u>	
3			Perf. top _____
2			Perf. bottom _____
Liners Used			Perf. top _____
			Perf. bottom _____

CASING CEMENTED 1892 SIZE 5 3/16 No. Ft. 8/5/60 Date
20 sks. Cement - 4 sks. Aquagel - Lawson Cementing Co.
COAL WAS ENCOUNTERED AT None FEET _____ INCHES
_____ FEET _____ INCHES FEET _____ INCHES
_____ FEET _____ INCHES FEET _____ INCHES

RESULT AFTER TREATMENT Showed 30/10, Mercury, 1 inch.-- 200,000

ROCK PRESSURE AFTER TREATMENT 35

Fresh Water 40-360 Feet _____ Salt Water _____ Feet _____

Formation	Color	Hard or Soft	Top	Bottom	Oil, Gas or Water	Depth	Remarks
Surface Rock		Soft		10			
Mud	Black	Hard	10	30			
Shale	Black	Soft	30	60	Water	40	
Slate	Red	Soft	60	110			
Shale	White	Soft	110	120			
Shale	Red	Soft	120	130			
Shell	Dark	Hard	130	135			
Slate	White	Soft	135	225			
Shale	Red	Soft	225	235			
Slate	White	Soft	235	255			
Lime	White	Hard	255	275			
Shale	Red	Soft	275	330			
Slate	White	Soft	330	388			
Slate & S	White	Soft	388	413	Water	360	Small Amt.
Shale	Red	Soft	413	428			
Slate	White	Soft	428	635			
Shale	Red	Soft	635	675			
Slate	White	Soft	675	685			
Lime	White	Hard	685	705			
Shale	Red	Soft	705	715			
Slate	White	Soft	715	755			
Shale	Black	Soft	755	785			
Shale	Red	Soft	785	817			
Slate	White	Soft	817	835			
Slate	Black	Soft	835	855			
Sand		Hard	855	862			
Slate	Black	Soft	862	884			
Slate	White	Soft	884	915			
Slate	Black	Soft	915	925			
Sand		Hard	925	935			

Formation	Color	Hard or Soft	Top ²	Bottom	Oil, Gas or Water	Depth Found	Remarks
Slate	White	Soft	935	965			
Slate	White	Soft	965	1088			
Sand	Gray	Hard	1088	1100			
Slate	Black	Soft	1100	1135			
Slate	White	Soft	1135	1163			
Sand	Gray	Hard	1163	1173			
Slate	Black	Soft	1173	1185			
Sand	Gray	Hard	1185	1295			
Slate	White	Soft	1295	1310			
Sand	Gray	Hard	1310	1380			
Slate	White	Soft	1380	1390			
Sand	Gray	Hard	1390	1420			
Broken S	Gray	Hard	1420	1487			
Slate	White	Soft	1487	1495			
Sand	Gray	Hard	1495	1515			
Slate	Black	Soft	1515	1532			
Sand		Hard	1532	1545			
Slate	Black	Soft	1545	1570			
Sand	Gray	Hard	1570	1620			
Shale	Red	Soft	1620	1643			
Sand	Gray	Hard	1643	1655			
Slate	Black	Soft	1655	1668			
Lime	Black	Hard	1668	1682			
Slate	Black	Soft	1682	1712			
Lime-S	Dark	Hard	1712	1732			
Lime	Gray	Hard	1732	1774			
Sand-B&I	Gray	Hard	1774	1862	Gas	1806	
Brake	Black	Soft	1862	1865	Gas	1816- 1826	
Sand	White	Hard	1865	1902			
Slate	Black	Soft	1902	1907	Gas	1870- 1878	
							Total Depth 1907

Date _____, 19__

APPROVED _____, Owner

By _____
(Title)