

Company NUTTERS FORK OIL & GAS CO.  
 Address 40 W. H. MOSSOR HARRISVILLE, W. VA.  
 Farm J. C. SMITH HRS.  
 Tract 2 Acres 52 Lease No. \_\_\_\_\_  
 Well (Farm) No. 1 Serial No. \_\_\_\_\_  
 Elevation (Spirit Level) 845'  
 Quadrangle WEST UNION - SE  
 County DODDRIDGE District WEST UNION  
 Engineer JOHN W. HAMILTON  
 Engineer's Registration No. 2274  
 File No. \_\_\_\_\_ Drawing No. \_\_\_\_\_  
 Date APRIL 30, 1960 Scale 1" = 20 POLES

STATE OF WEST VIRGINIA  
 DEPARTMENT OF MINES  
 OIL AND GAS DIVISION  
 CHARLESTON

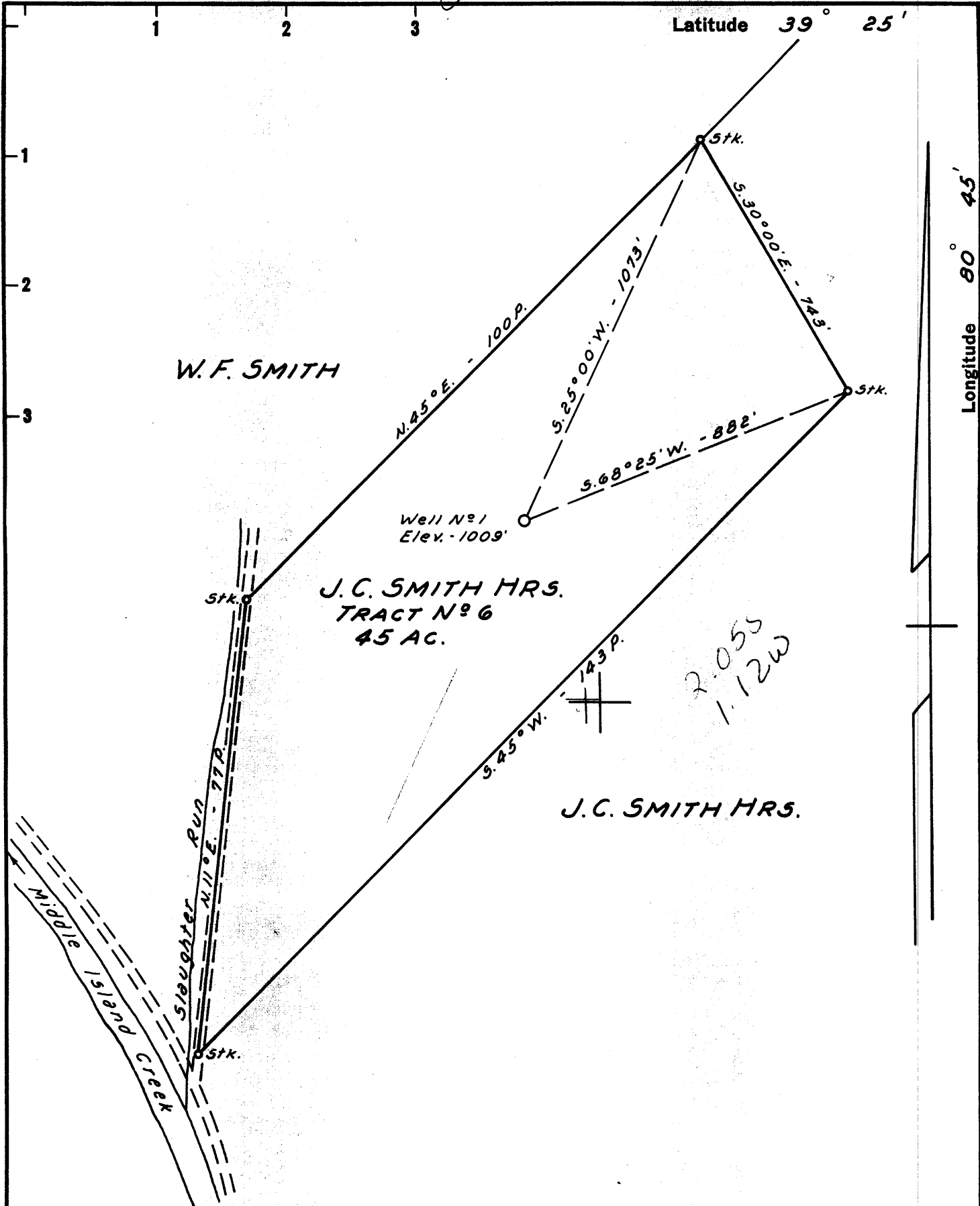
**WELL LOCATION MAP**  
 FILE NO. DoD-374  
 (was 531)

+ Denotes location of well on United States Topographic Maps, scale 1 to 62,500, latitude and longitude lines being represented by border lines as shown.

- Denotes one inch spaces on border line of original tracing.

Latitude 39° 25'

Longitude 80° 45'



W.F. SMITH

J.C. SMITH MRS.  
TRACT No 6  
45 AC.

J.C. SMITH MRS.

New Location   
 Drill Deeper   
 Abandonment

NOTE:  
 J.C. Smith Mrs. own in Fee.

(see 017-374)

Company NUTTERS FORK TWO OIL & GAS Co.  
 Address 40 W. H. MOSSOR HARRISVILLE, W. VA.  
 Farm J.C. SMITH MRS.  
 Tract \_\_\_\_\_ Acres 45 Lease No. \_\_\_\_\_  
 Well (Farm) No. 1 Serial No. \_\_\_\_\_  
 Elevation (Spirit Level) 1009'  
 Quadrangle WEST UNION  
 County DODDRIDGE District WEST UNION  
 Engineer JOHN W. HAMILTON  
 Engineer's Registration No. 2274  
 File No. \_\_\_\_\_ Drawing No. \_\_\_\_\_  
 Date NOV. 13, 1960 Scale 1" = 20 POLES

STATE OF WEST VIRGINIA  
 DEPARTMENT OF MINES  
 OIL AND GAS DIVISION  
 CHARLESTON

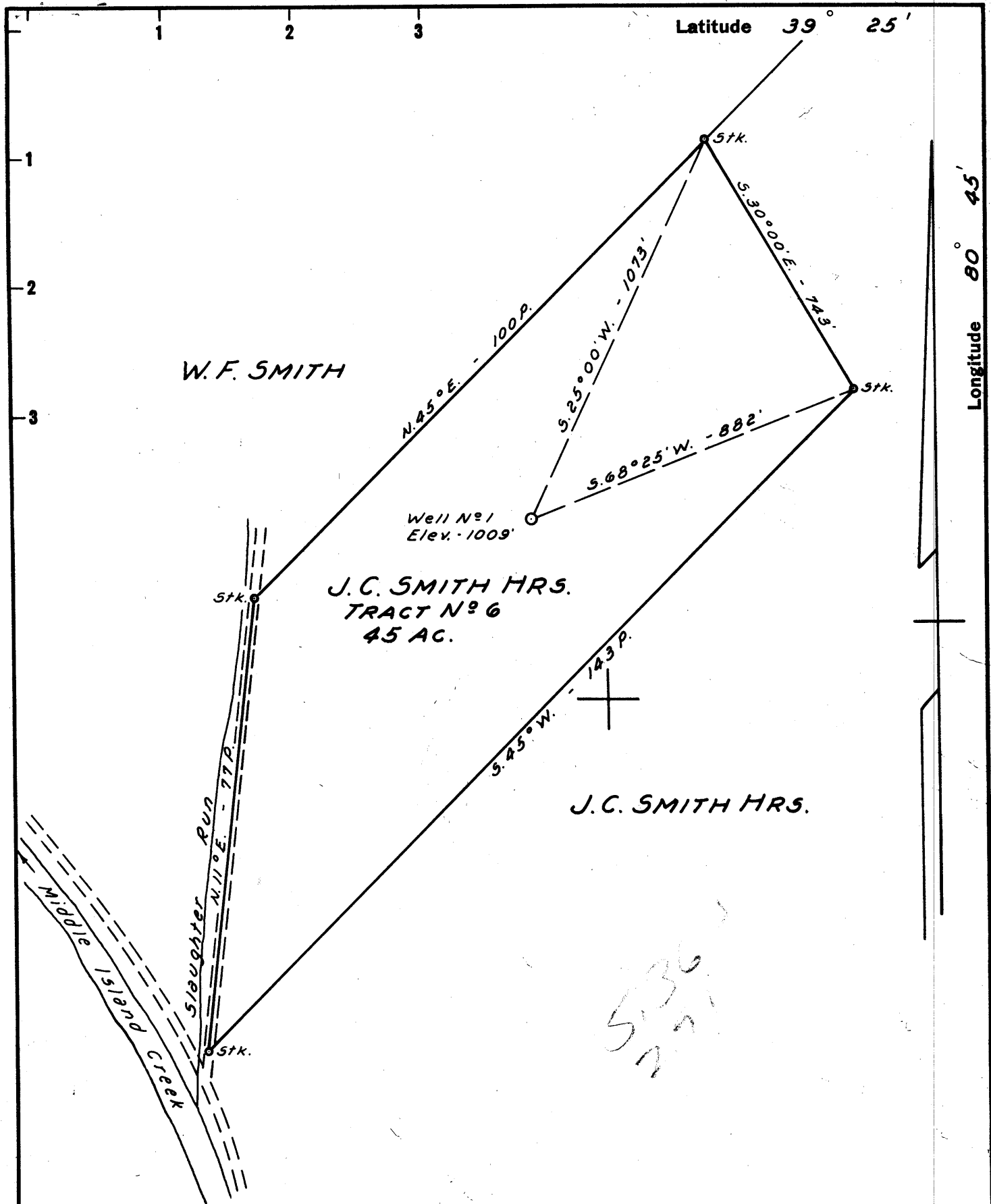
WELL LOCATION MAP

FILE NO. DOD-531

*Cancelled*

+ Denotes location of well on United States Topographic Maps, scale 1 to 62,500, latitude and longitude lines being represented by border lines as shown.

- Denotes one inch spaces on border line of original tracing.



New Location   
 Drill Deeper   
 Abandonment

NOTE:  
 J.C. Smith Hrs. own in Fee.

536  
 277

Company NUTTERS FORK TWO OIL & GAS Co.  
 Address 40 W. H. MOSSOR HARRISVILLE, W. VA.  
 Farm J.C. SMITH HRS.  
 Tract \_\_\_\_\_ Acres 45 Lease No. \_\_\_\_\_  
 Well (Farm) No. 1 Serial No. \_\_\_\_\_  
 Elevation (Spirit Level) 1009'  
 Quadrangle WEST UNION  
 County DODDRIDGE District WEST UNION  
 Engineer JOHN W. HAMILTON  
 Engineer's Registration No. 2274  
 File No. \_\_\_\_\_ Drawing No. \_\_\_\_\_  
 Date NOV. 13, 1960 Scale 1" = 20 POLES

STATE OF WEST VIRGINIA  
 DEPARTMENT OF MINES  
 OIL AND GAS DIVISION  
 CHARLESTON

WELL LOCATION MAP  
 FILE NO. DOD-531  
 (now 374)

+ Denotes location of well on United States Topographic Maps, scale 1 to 62,500, latitude and longitude lines being represented by border lines as shown.  
 - Denotes one inch spaces on border line of original tracing.



STATE OF WEST VIRGINIA  
DEPARTMENT OF MINES  
OIL AND GAS DIVISION 4

Quadrangle West Union

Permit No. DOD-374

**WELL RECORD**

Oil or Gas Well Gas.  
(KIND)

Company Hutters Fork Oil and Gas Company  
Address Box 204, Harrisville, W. Va.  
Farm J. C. Smith Acres 52  
Location (waters) Middle Island Creek  
Well No. 1 Elev. 875'  
District West Union County Doddridge  
The surface of tract is owned in fee by J. C. Smith  
Address West Union,  
Mineral rights are owned by J. C. Smith, exec.  
Address West Union, W. Va.  
Drilling commenced Aug. 23, 1960  
Drilling completed Sept 25, 1960  
Date Shot From To  
With  
Open Flow /10ths Water in Inch  
/10ths Merc. in Inch  
Volume Cu. Ft.  
Rock Pressure 250 lbs. 24 hrs.  
Oil bbls., 1st 24 hrs.  
WELL ACIDIZED  
WELL FRACTURED ~~20~~ 24 Hours

Casing and Tubing	Used in Drilling	Left in Well	Packers
Size			Kind of Packer
16			
13			
10			Size of
8 1/4			
6 3/8			Depth set
5 3/16	1985'	1985'	
3			Perf. top
2			Perf. bottom
Liners Used			Perf. top
			Perf. bottom

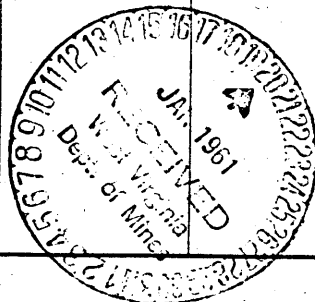
CASING CEMENTED SIZE No. Ft. Date  
75 sks. Cement - 4 sks. Aquagel - 30 sks. Baroid  
By Driller By Dowell  
COAL WAS ENCOUNTERED AT FEET INCHES  
FEET INCHES FEET INCHES  
FEET INCHES FEET INCHES

RESULT AFTER TREATMENT

ROCK PRESSURE AFTER TREATMENT 250 - 24 hours

Fresh Water Feet Salt Water Feet

Formation	Color	Hard or Soft	Top	Bottom	Oil, Gas or Water	Depth	Remarks
Clay			0	20			
Slate			20	35			
Clay			36	60			
Red Rock			60	110			
Sand			110	130	Water	130	Hole full
Slate			130	170			
Red Rock			170	200			
Sand			200	350	Water	300	
Line & Slate			350	525			
Pink Rock			525	535			
Line			535	625			
Black Slate			625	630			
Grey Slate			630	665			
Red Rock			665	690			
Slate			690	745			
Sand			745	785	Oil	769'	Show
Slate & shells			785	825			
Red Rock			825	840			
Slate & Shells			840	910			
Sand & Line			910	960			
Slate & Shells			960	1045			
Line			1045	1110			
Sand			1110	1145			
Slate & Shells			1145	1280			
Sand			1280	1415			
Slate			1415	1460			
Sand			1460	1585			
Slate			1585	1630			



Formation	Color	Hard or Soft	Top 4	Bottom	Oil, Gas or Water	Depth Found	Remarks
Sand			1630	1650			
Slate			1650	1655			
Lime			1655	1670			
Slate			1670	1680			
Red Rock			1680	1700			
Slate			1700	1705			
Dark Lime			1705	1740			
Pencil Cave			1740	1742			
Big Lime			1742	1748			
Sand b, Monday			1748	1753			
Big Lime			1753	1844			
Sand			1844	1930	Gas	1856'	JNJM
Slate			1930	1961	Oil	1920'	
Total depth				1961			



STATE OF WEST VIRGINIA  
DEPARTMENT OF MINES  
OIL AND GAS DIVISION 9

Quadrangle WEST UNION

Permit No. Dod-531 → now 374

**WELL RECORD**

Oil or Gas Well Gas  
(KIND)

Company Nutters Fork Oil and Gas Company  
Address Box 204, Harrisville, W. Va.  
Farm J. C. Smith Acres 52  
Location (waters) Middle Island Creek  
Well No. 1 Elev. 845  
District West Union County Doddridge  
The surface of tract is owned in fee by J. C. Smith  
Address West Union, W. Va.  
Mineral rights are owned by J. C. Smith  
Address \_\_\_\_\_  
Drilling commenced August 24, 1960  
Drilling completed Sept. 25, 1960  
Date Shot \_\_\_\_\_ From \_\_\_\_\_ To \_\_\_\_\_  
With \_\_\_\_\_  
Open Flow \_\_\_\_\_ /10ths Water in \_\_\_\_\_ Inch  
\_\_\_\_\_ /10ths Merc. in \_\_\_\_\_ Inch  
Volume \_\_\_\_\_ Cu. Ft.  
Rock Pressure 250 lbs. \_\_\_\_\_ hrs.  
Oil \_\_\_\_\_ bbls., 1st 24 hrs.  
WELL ACIDIZED \_\_\_\_\_

Casing and Tubing	Used in Drilling	Left in Well	Packers
Size			Kind of Packer
16			
18			Size of
10			
8 1/4			Depth set
6 1/2	1985'	1985'	
5 1/2			Perf. top
3			Perf. bottom
2			Perf. top
Liners Used			Perf. bottom

CASING CEMENTED 1 1/2 SIZE 1961 No. Ft. \_\_\_\_\_ Date \_\_\_\_\_  
Drilled Dowell

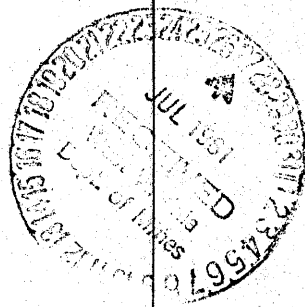
COAL WAS ENCOUNTERED AT \_\_\_\_\_ FEET \_\_\_\_\_ INCHES  
\_\_\_\_\_ FEET \_\_\_\_\_ INCHES FEET \_\_\_\_\_ INCHES  
\_\_\_\_\_ FEET \_\_\_\_\_ INCHES FEET \_\_\_\_\_ INCHES

WELL FRACTURED Breakdown Pressure 3100# - Injection Pressure 2200# - Injection Rate 9 18BPM -  
37,800 Gals. Water - 28,000# 20/40 Sand - 500 Gals. Dowell Mud Acid

RESULT AFTER TREATMENT Volume ??  
ROCK PRESSURE AFTER TREATMENT 250 lb. 3 weeks

Fresh Water \_\_\_\_\_ Feet Salt Water \_\_\_\_\_ Feet

Formation	Color	Hard or Soft	Top	Bottom	Oil, Gas or Water	Depth	Remarks
Clay		0	20				
Slate		20	35				
Clay			35	60			
Red Rock			60	110			
Sand			110	130	Water	130	Hole full
Slate			130	170			
Red Rock			170	200			
Sand			200	350	Water	300	
Line & Slate			350	525			
Pink Rock			525	535			
Line			535	625			
Black Slate			625	630			
Gray Slate			620	665			
Red Rock			665	690			
Slate			690	745			
Sand			745	765	Oil	769'	Show
Slate & shells			765	825			
Red Rock			825	840			
Slate & shells			840	910			
Sand & Line			910	960			
Slate & shells			960	1045			
Line			1045	1110			
Sand			1110	1145			
Slate & shells			1145	1280			
Sand			1280	1415			
Slate			1415	1460			
Sand			1460	1585			
Slate			1585	1630			



Formation	Color	Hard or Soft	Top 9	Bottom	Oil, Gas or Water	Depth Found	Remarks
Sand			1630	1650			
Slate			1650	1655			
Lime			1655	1670			
Slate			1670	1680			
Red Rock			1680	1700			
Slate			1700	1705			
Dark Lime			1705	1740			
Pencil Cave			1740	1742			
Big Lime			1742	1748			
Sand, Blue Monday			1748	1753			
Big Lime			1753	1844			
Sand			1844	1930	Gas	1856'	
<del>Slate</del>							
Slate			1930	1961	Oil	1920'	Smell
Total Depth				1961			

1742  
845  
-----  
897