

New Location   
 Drill Deeper   
 Abandonment

NOTE:  
 ROBT. POWELL OWNS IN FEE.

Company CHARLES E. BAKER  
 Address 96 HAROLD H. FORD  
WEST UNION, W.VA.  
 Farm ROBERT POWELL  
 Tract \_\_\_\_\_ Acres 50 Lease No. \_\_\_\_\_  
 Well (Farm) No. 2 Serial No. \_\_\_\_\_  
 Elevation (Spirit Level) 1095'  
 Quadrangle WEST UNION  
 County DODDRIDGE District WEST UNION  
 Engineer John W. Hamilton  
 Engineer's Registration No. 2274  
 File No. \_\_\_\_\_ Drawing No. \_\_\_\_\_  
 Date JUNE 25, 1960 Scale 1" = 30 FEET

STATE OF WEST VIRGINIA  
 DEPARTMENT OF MINES  
 OIL AND GAS DIVISION  
 CHARLESTON

WELL LOCATION MAP

FILE NO. DOD-412  
 DRILLING CANCELED

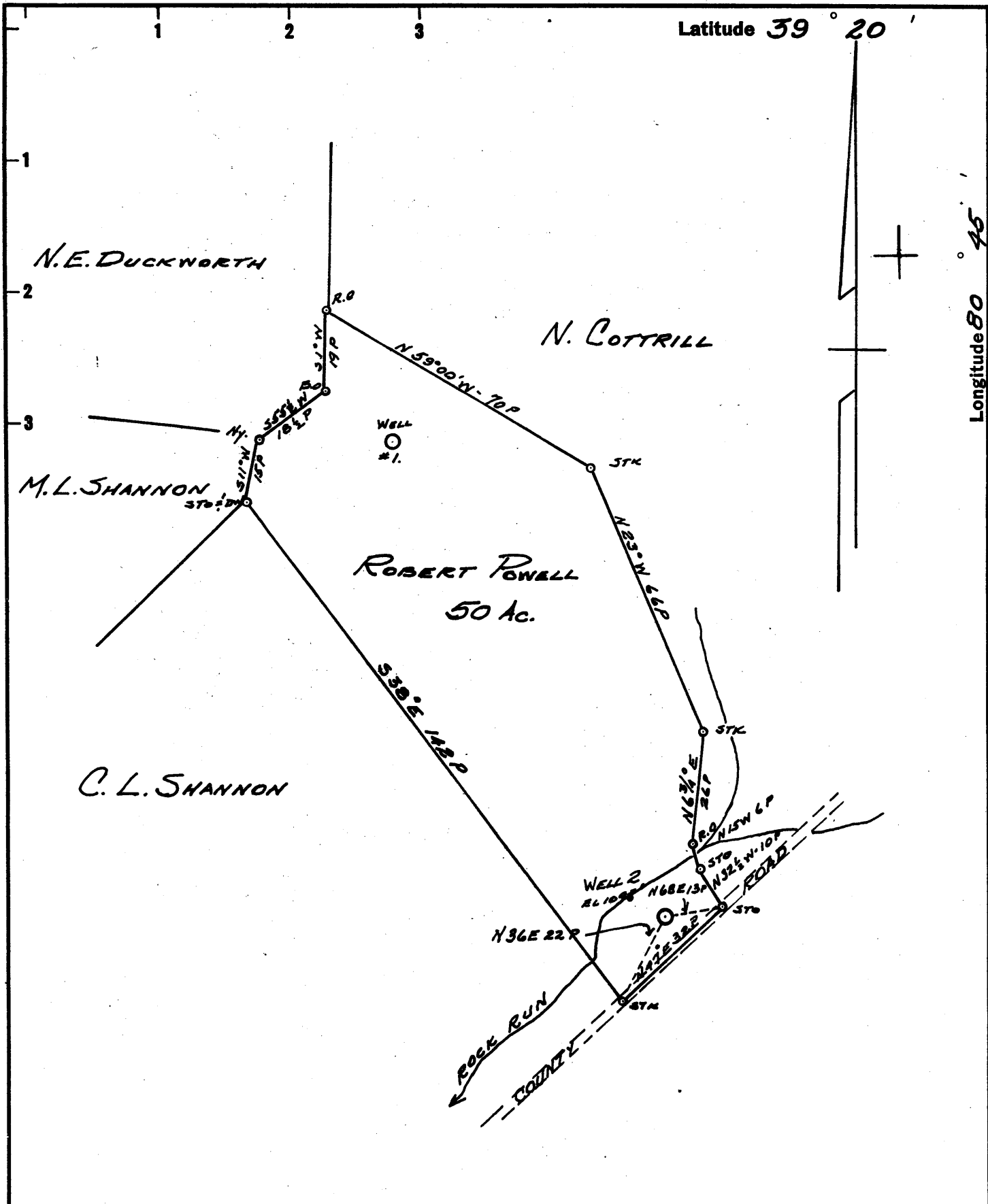
+ Denotes location of well on United States Topographic Maps, scale 1 to 62,500, latitude and longitude lines being represented by border lines as shown.

- Denotes one inch spaces on border line of original tracing.

APR 21 1978

Latitude 39° 20'

Longitude 80° 45'



- New Location
- Drill Deeper
- Abandonment

NOTE:  
ROBT. POWELL OWNS IN FEE.

Company	CHARLES E. BAKER
Address	96 HAROLD H. FORD WEST UNION, W.VA.
Farm	ROBERT POWELL
Tract	Acres 50 Lease No.
Well (Farm) No.	2 Serial No.
Elevation (Spirit Level)	1095'
Quadrangle	WEST UNION SE
County	DODDRIIDGE District WEST UNION
Engineer	John W. Hamilton
Engineer's Registration No.	2274
File No.	Drawing No.
Date	JUNE 25, 1960 Scale 1" = 30 FEET

STATE OF WEST VIRGINIA  
DEPARTMENT OF MINES  
OIL AND GAS DIVISION  
CHARLESTON

**WELL LOCATION MAP**  
FILE NO. DOD-412

+ Denotes location of well on United States Topographic Maps, scale 1 to 62,500, latitude and longitude lines being represented by border lines as shown.

- Denotes one inch spaces on border line of original tracing.

TOO CROWDED TO PLOT