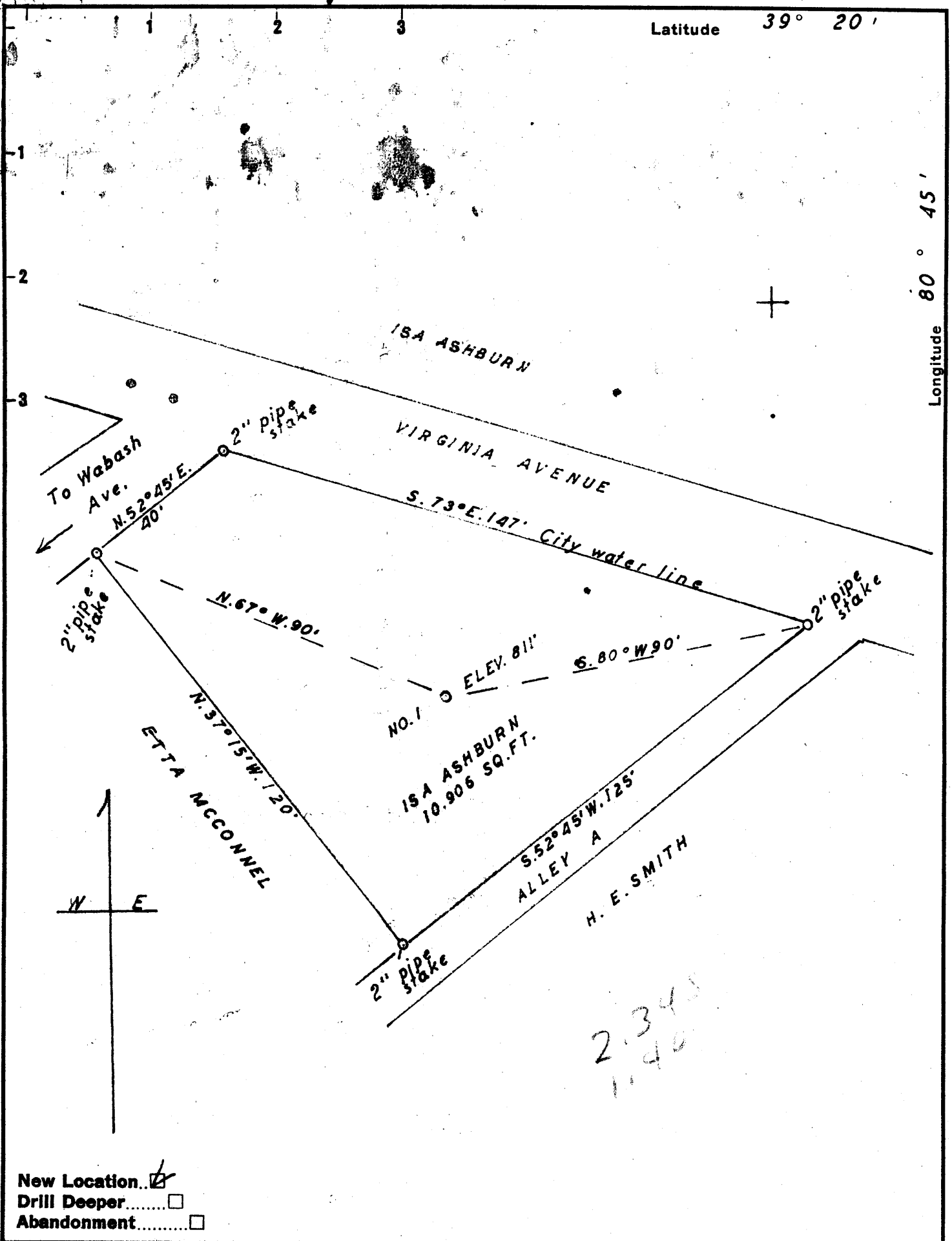


Latitude 39° 20'

Longitude 80° 45'



2345  
1140

New Location   
 Drill Deeper   
 Abandonment

Company FOLWELL ASSOC. & MYERS  
 Address RT. 1. BOX 125. ST. MARYS. W. VA.  
 Farm ISA ASHBURN  
 Tract 7 Acres 10,906 SQ. FT. Lease No. 2  
 Well (Farm) No. 1 Serial No. 1  
 Elevation (Spirit Level) 811'  
 Quadrangle WEST UNION SE  
 County DODDRIDGE District WEST UNION  
 Engineer Parker E. Peters  
 Surveyed by Thomas W. Myers  
 Engineer's Registration No. \_\_\_\_\_  
 File No. \_\_\_\_\_ Drawing No. \_\_\_\_\_  
 Date JULY 18, 1960 Scale 1" = 30'

STATE OF WEST VIRGINIA  
 DEPARTMENT OF MINES  
 OIL AND GAS DIVISION  
 CHARLESTON

WELL LOCATION MAP  
 FILE NO. DOD-427

+ Denotes location of well on United States Topographic Maps, scale 1 to 62,500, latitude and longitude lines being represented by border lines as shown.

- Denotes one inch spaces on border line of original tracing.

Too Crowded To Plot 6-6-60



STATE OF WEST VIRGINIA  
DEPARTMENT OF MINES  
OIL AND GAS DIVISION

Quadrangle West Union

Permit No. DOD-427

WELL RECORD

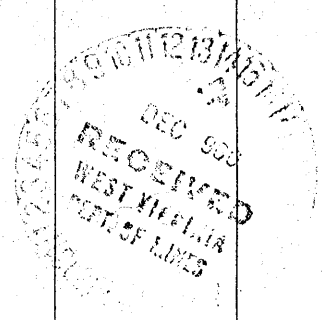
Oil or Gas Well Oil & Gas  
(KIND)

Company <u>Folwell Associates and Myers</u>	Casing and Tubing	Used in Drilling	Left in Well	Packers
Address <u>Rt. 1, Box 125, St. Marys, W. Va.</u>	Size			
Farm <u>Isa Ashburn</u> Acres <u>10,906</u> Sq. Ft.	16			Kind of Packer <u>none</u>
Location (waters) <u>Middle Island Creek</u>	18			Size of
Well No. <u>1</u> Elev. <u>811'</u>	10	<u>17'</u>	<u>17'</u>	Depth set
District <u>West Union</u> County <u>Doddridge</u>	8 1/4	<u>354'</u>	<u>pulled</u>	
The surface of tract is owned in fee by <u>Isa Ashburn</u>	6 5/8	<u>1018'</u>	<u>pulled</u>	
Address <u>West Union, W. Va.</u>	5 3/16		<u>1874-1/2'</u>	
Mineral rights are owned by <u>same party</u>	3			Perf. top <u>1792'</u>
Address	2			Perf. bottom <u>1846'</u>
Drilling commenced	Liners Used			Perf. top
Drilling completed <u>November 5, 1960</u>				Perf. bottom
Date Shot <u>not shot</u> From To				
With				
Open Flow <u>16</u> /10ths Water in <u>3</u> Inch				
/10ths Merc. in Inch				
Volume <u>370,000 (After Fracture)</u> Cu. Ft.				
Rock Pressure <u>520</u> lbs. <u>24</u> hrs.				
Oil <u>7 Bbl (After Fracture)</u> bbls., 1st 24 hrs.				
WELL ACIDIZED <u>no</u>				

CASING CEMENTED yes SIZE 5 1/2" No. Ft. 300 Date 11/16/60  
20 sks. Cement - 4 sks. Aquagel  
 Lawson Cementing Company  
 COAL WAS ENCOUNTERED AT none FEET INCHES  
 FEET INCHES FEET INCHES  
 FEET INCHES FEET INCHES

WELL FRACTURED yes; 1792' - 1815'; 1819' - 1825'; 1830' - 1836'; 1839' - 1846';  
Multiple Fracture; 40 perforations; Electric Logged Gamma Ray - Neutron;  
 RESULT AFTER TREATMENT From very light shows to 370,000 Cu. Ft., 7 Bbl.  
 ROCK PRESSURE AFTER TREATMENT 520 24 Hours  
 Fresh Water 45 Feet none Salt Water Feet

Formation	Color	Hard or Soft	Top	Bottom	Oil, Gas or Water	Depth	Remarks
clay	red	soft	0	10			
rock	red	soft	10	17			
lime	gray	hard	17	20			
slate	black	soft	20	32			
slate	white	soft	32	40			
sand	gray	soft	40	46			
rock	gray	hard	46	54	water	40-45'	light
lime shell	gray	hard	54	65			
rock	red	soft	65	78			
lime shell	gray	hard	78	94			
slate	black	soft	94	114			
slate	white	soft	114	142			
slate	black	soft	142	165			
rock	red	soft	165	185			
slate	black	soft	185	200			
lime shell	gray	hard	200	207			
lime	white	hard	207	209			
sand	white	hard	209	227			
slate	black	soft	227	243			
sand	gray	hard	243	267			
slate	black	soft	267	300			
sand	gray	hard	300	305			
rock	red	soft	305	329			
slate	gray	soft	329	375			
sand	gray	hard	375	387			
sandy slate	gray	hard	387	415			
rock	red	spft	415	427			



Formation	Color	Hard or Soft	Top $\delta$	Bottom	Oil, Gas or Water	Depth Found	Remarks
lime	gray	hard	427	452			
sandy-slate	gray	hard	452	500			
rock	red	soft	500	520			
slate	black	soft	520	528			
lime-shells	gray	hard	528	600			
slate	gray	soft	600	628			
sand	white	hard	628	645			
slate	black	soft	645	655			
slate	white	soft	655	668			
lime shell	gray	hard	668	676			
slate	black	soft	676	700			
lime	white	hard	700	730			
sand	white	hard	730	775			
rock	red	soft	775	836			Cavy
slate	gray	soft	836	917			
sand	white	hard	917	945	gas	925 show	Cow Run
lime shells	gray	hard	945	1018			
sand	gray	hard	1018	1060			
slate	black	soft	1060	1075			
sand	gray	hard	1075	1120			
slate	black	hard	1120	1148			
lime	white	hard	1148	1232			shells
sand	gray	hard	1232	1310			
slate	black	soft	1310	1330			
sand	gray	hard	1330	1392			
slate	black	soft	1392	1430			
sand	gray	hard	1430	1447			
lime shells	gray	hard	1447	1450			
sand	gray	hard	1450	1508			
slate	black	hard	1508	1590			sandy
sand	gray	hard	1590	1639	gas	1995 show	
slate	black	soft	1639	1645			
lime	gray	hard	1645	1680			Big Lime
slate	black	hard	1680	1685			" "
lime	white	hard	1685	1787			" "
sand	white	hard	1787	1865	Gas-Oil	1797-1846	Shows
slate	black	hard	1865	1874½			Total Depth

Date December 12, 1960

APPROVED Folwell Associates and Myers, Owner  
 By [Signature]  
 (Title) Partner