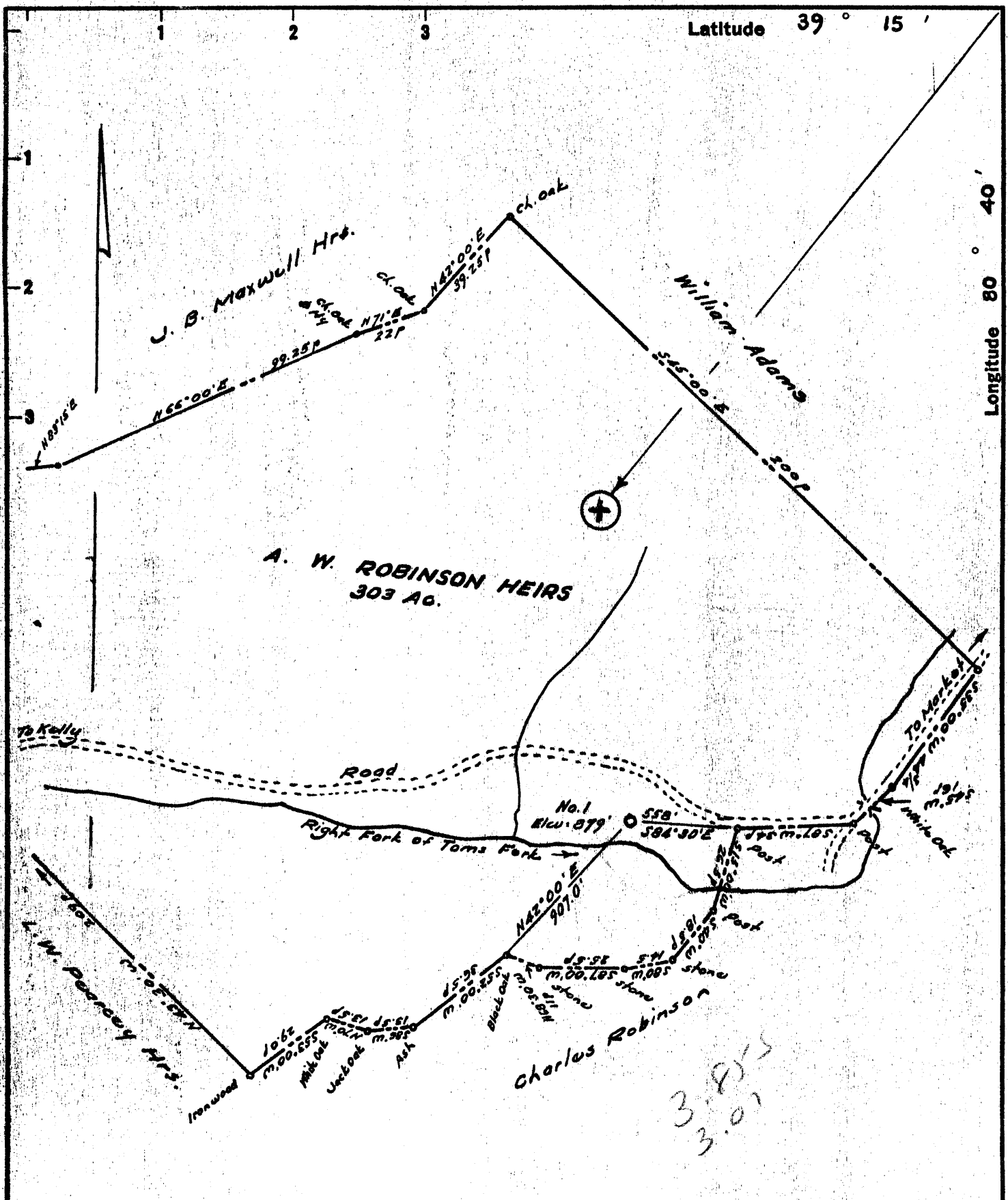


Latitude 39° 15'

Longitude 80° 40'



New Location   
 Drill Deeper   
 Abandonment

No coal  
 Surface: - Paul Robinson, Solum, W. Va.

10-6-69 Plugging Cancelled

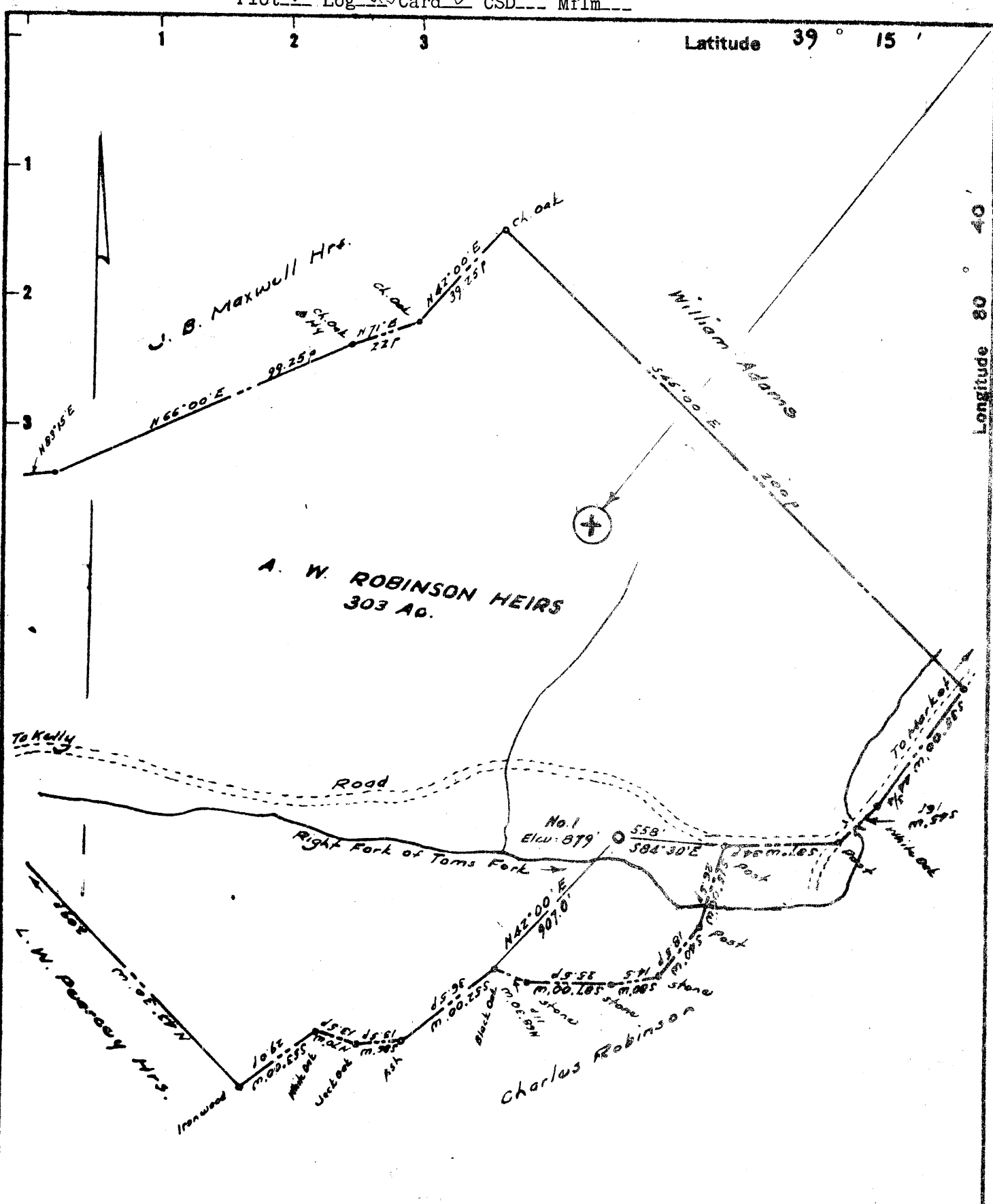
Company F. C. Stone (West Branch Oil & Gas)  
P. C. BACHELOR  
 Address 205 E. State St., Athens, Ohio  
Paul Robinson, Solum, W. Va.  
 Farm A. W. Robinson Heirs  
 Tract \_\_\_\_\_ Acres 303 Lease No. \_\_\_\_\_  
 Well (Farm) No. 000 Serial No. \_\_\_\_\_  
 Elevation (Spirit Level) 879  
 Quadrangle Vadis NW  
 County Doddridge District New Milton  
 Engineer W. H. [Signature]  
 Engineer's Registration No. 1227  
 File No. \_\_\_\_\_ Drawing No. \_\_\_\_\_  
 Date August 1960 Scale 1" = 40 p.

STATE OF WEST VIRGINIA  
 DEPARTMENT OF MINES  
 OIL AND GAS DIVISION  
 CHARLESTON

WELL LOCATION MAP  
 FILE NO. 000-440 (P.C. Stone)

Plugging Cancelled  
 + Denotes location of well on United States Topographic Maps, scale 1 to 62,500, latitude and longitude lines being represented by border lines as shown.

- Denotes one inch spaces on border line of original tracing.



New Location   
 Drill Deeper   
 Abandonment  *10-6-69*

No coal  
 Surface: - Paul Robinson, Salem, W. Va.

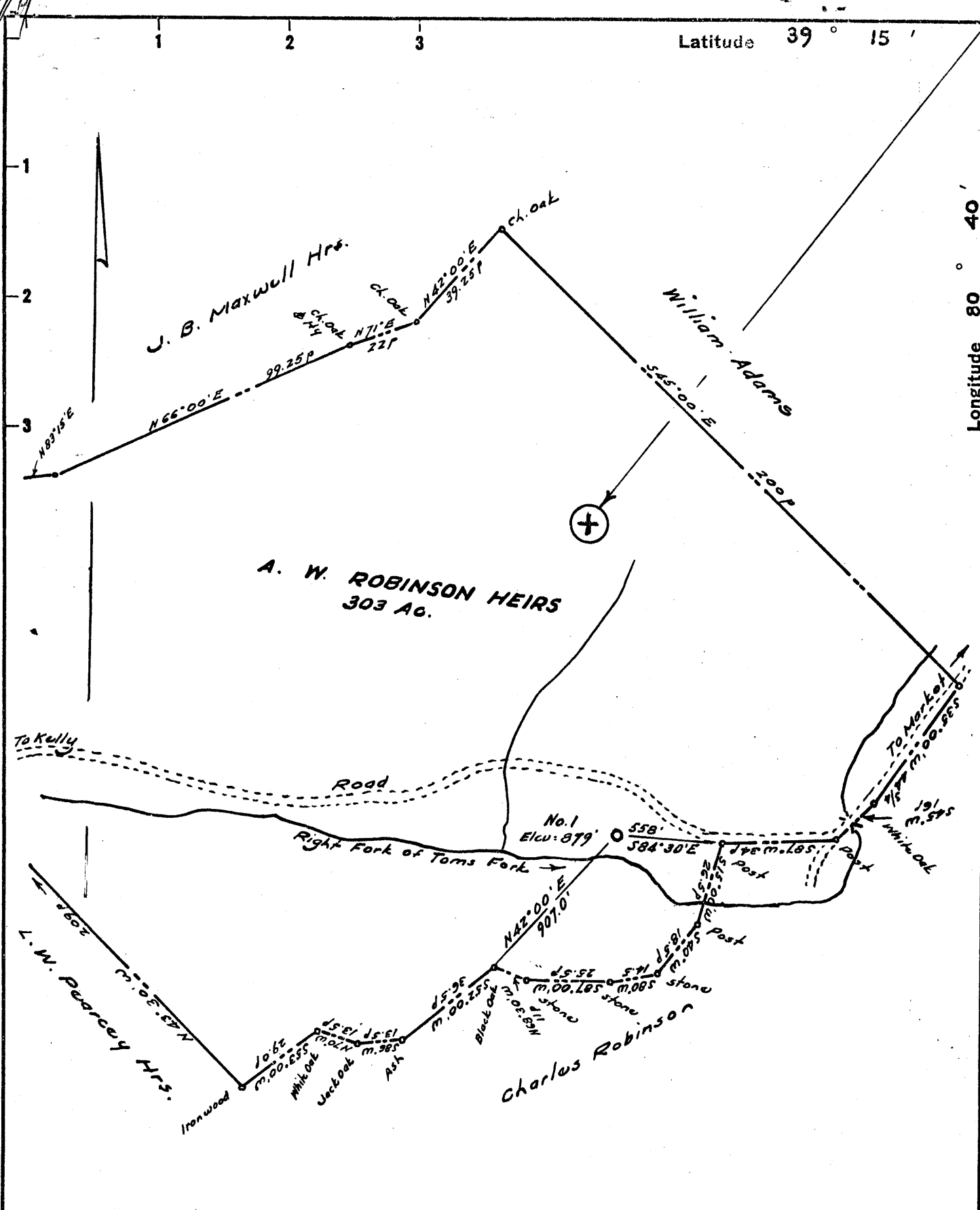
Company F. C. Stone (West Branch Oil & Gas)  
 Address 205 E. State St. Athens, Ohio  
 Farm A. W. Robinson Heirs  
 Tract \_\_\_\_\_ Acres 309 Lease No. \_\_\_\_\_  
 Well (Farm) No. One Serial No. \_\_\_\_\_  
 Elevation (Spirit Level) 879  
 Quadrangle Kadis NW  
 County Doddridge District New Milton  
 Engineer W. H. Stone  
 Engineer's Registration No. 1227  
 File No. \_\_\_\_\_ Drawing No. \_\_\_\_\_  
 Date August 1960 Scale 1" = 400'

STATE OF WEST VIRGINIA  
 DEPARTMENT OF MINES  
 OIL AND GAS DIVISION  
 CHARLESTON

**WELL LOCATION MAP**  
 FILE NO. DDO-440-P

+ Denotes location of well on United States Topographic Maps, scale 1 to 62,500, latitude and longitude lines being represented by border lines as shown.

- Denotes one inch spaces on border line of original tracing.



New Location   
 Drill Deeper   
 Abandonment

No coal  
 Surface: - Paul Robinson, Salem, w. Va.

Company **R. C. BATCHELOR**  
 Address Box 116, West Union, W. Va.  
 Farm A. W. Robinson Heirs  
 Tract \_\_\_\_\_ Acres 303 Lease No. \_\_\_\_\_  
 Well (Farm) No. One Serial No. \_\_\_\_\_  
 Elevation (Spirit Level) 879  
 Quadrangle Vadis NW  
 County Doddridge District New Milton  
 Engineer W. H. [Signature]  
 Engineer's Registration No. 1227  
 File No. \_\_\_\_\_ Drawing No. \_\_\_\_\_  
 Date August 1950 Scale 1" = 40 p.

STATE OF WEST VIRGINIA  
 DEPARTMENT OF MINES  
 OIL AND GAS DIVISION  
 CHARLESTON

**WELL LOCATION MAP**  
 FILE NO. DOD-440

+ Denotes location of well on United States Topographic Maps, scale 1 to 62,500, latitude and longitude lines being represented by border lines as shown.

- Denotes one inch spaces on border line of original tracing.



STATE OF WEST VIRGINIA  
DEPARTMENT OF MINES  
OIL AND GAS DIVISION

Quadrangle Vadis

Permit No. DOD-440

WELL RECORD

Oil or Gas Well Gas  
(KIND)

Company West Branch Oil & Gas  
Address Providence Bank Bldg.  
Farm Paul Robinson Acres \_\_\_\_\_  
Location (waters) Rt. Fork of Tom's Fork  
Well No. one Elev. 879'  
District New Milton County Doddridge  
The surface of tract is owned in fee by Paul Robinson  
Address Salen, W. Va.  
Mineral rights are owned by Same  
Address \_\_\_\_\_  
Drilling commenced 8/1/60 (Rotary)  
Drilling completed 8/20/60  
Date Shot \_\_\_\_\_ From \_\_\_\_\_ To \_\_\_\_\_  
With \_\_\_\_\_  
Open Flow \_\_\_\_\_ /10ths Water in \_\_\_\_\_ Inch  
\_\_\_\_\_ /10ths Merc. in \_\_\_\_\_ Inch  
Volume \_\_\_\_\_ Cu. Ft.  
Rock Pressure \_\_\_\_\_ lbs. \_\_\_\_\_ hrs.  
Oil \_\_\_\_\_ bbls., 1st 24 hrs.  
WELL ACIDIZED \_\_\_\_\_

Casing and Tubing	Used in Drilling	Left in Well	Packers
Size			Kind of Packer _____
16			
13			Size of _____
10			
8 1/4			Depth set _____
6 3/4 / 7"		35'	
5 1/2 / 4 1/2		2010'	Perf. top _____
3			Perf. bottom _____
2			Perf. top _____
Liners Used			Perf. bottom _____

CASING CEMENTED 7" SIZE 35' No. Ft. \_\_\_\_\_ Date \_\_\_\_\_  
75 sks. Cement 4 1/2 2010 Hole full drilling  
Garaton Service Mud  
COAL WAS ENCOUNTERED AT None FEET \_\_\_\_\_ INCHES  
\_\_\_\_\_ FEET \_\_\_\_\_ INCHES FEET \_\_\_\_\_ INCHES  
\_\_\_\_\_ FEET \_\_\_\_\_ INCHES FEET \_\_\_\_\_ INCHES

WELL FRACTURED 12,000 gal. water & 12,000# sand

RESULT AFTER TREATMENT Not taken

ROCK PRESSURE AFTER TREATMENT Not taken

Fresh Water \_\_\_\_\_ Feet \_\_\_\_\_ Salt Water \_\_\_\_\_ Feet \_\_\_\_\_

Formation	Color	Hard or Soft	Top	Bottom	Oil, Gas or Water	Depth	Remarks
Sand gravel & shale			0	325			
Sand			325	400			
Shale & sandy shale			400	1150			
Sand			1150	1220			
Shale			1220	1275			
Sand			1275	1295			
Shale			1295	1305			
Sand			1305	1390			
Sandy Shale			1390	1550			
Shaly Sand			1550	1600			
Shale			1600	1670			
Sand (MAXTON) Oil Show			1670	1715			
Sandy Shale			1715	1760			
Shaly Sand			1760	1805			
Shale			1805	1810			
Lime			- 1810	1822			
Shale			1822	1828			
Lime (Big Lime) Gas Show			- 1828	1910			
			1828-68'				
Sandy lime (Big Injun) Gas			1910	1998			
Shale Oil & Gas			1945-73'	2028			
Total Depth			2028'				

