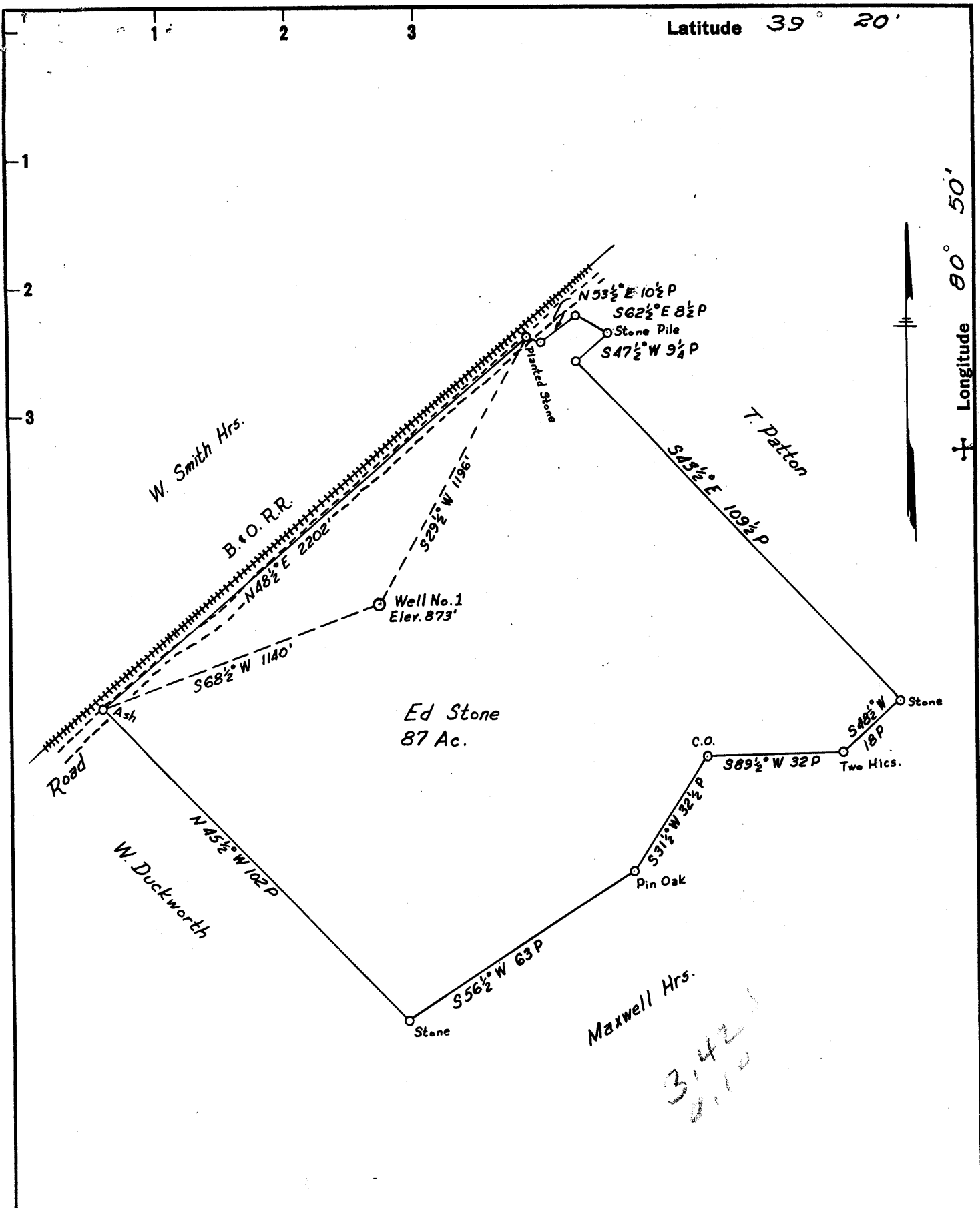


Latitude 39° 20'

Longitude 80° 50'



New Location
 Drill Deeper
 Abandonment

Company James Drilling Co., Inc.
 Address 250 NEWPORT ROAD, BLAIRSVILLE, PA.
 Farm ED STONE
 Tract 1 Acres 87 Lease No. _____
 Well (Farm) No. 1 Serial No. _____
 Elevation (Spirit Level) 873'
 Quadrangle WEST UNION 5C
 County DODDRIDGE District CENTRAL
 Engineer Parker C. Peters
Field - W.P. Ireland
 Engineer's Registration No. 485
 File No. _____ Drawing No. _____
 Date SEPT. 5, 1960 Scale 1" = 30P

STATE OF WEST VIRGINIA
 DEPARTMENT OF MINES
 OIL AND GAS DIVISION
 CHARLESTON

WELL LOCATION MAP
 FILE NO. DOD-467

+ Denotes location of well on United States Topographic Maps, scale 1 to 62,500, latitude and longitude lines being represented by border lines as shown.

- Denotes one inch spaces on border line of original tracing.

6 89

Formation	Color	Hard or Soft	Top 3	Bottom	Oil, Gas or Water	Depth Found	Remarks
Slate			850'	880'			
Red Rock			880'	1000'			
Sand			1000'	1052'			
Slate			1052'	1065'			
Sand			1065'	1087'			
Slate			1087'	1135'			
Sand			1135'	1146'			
Slate			1146'	1210'	Gas		
Sand			1210'	1270'			
Slate			1270'	1305'			
Salt Sand			1305'	1372'			
Slate			1372'	1390'			
Salt Sand			1390'	1450'			
Slate			1450'	1575'			
Salt Sand			1575'	1619'			
Slate			1619'	1680'			
Maxon Sand	Broken	Sand	1680'	1692'			Broken Sand
Slate			1692'	1724'			
Red Rock			1724'	1734'			
Little Lime			1734'	1774'			
Slate			1774'	1800'			
Pencil Cove			1800'	1804'			
Big Lime			1804'	1885'			
Keener Sand			1885'	1900'			
Injun Sand			1900'	1953'	Gas	1905'	
Total Depth				1965'	Test	1912'	12/10 -1" opening - 41,700 cu. ft.

Date January 18, 19 61

APPROVED Worldwide Petroleum Corporation, Owner

By George Platt
(Title)