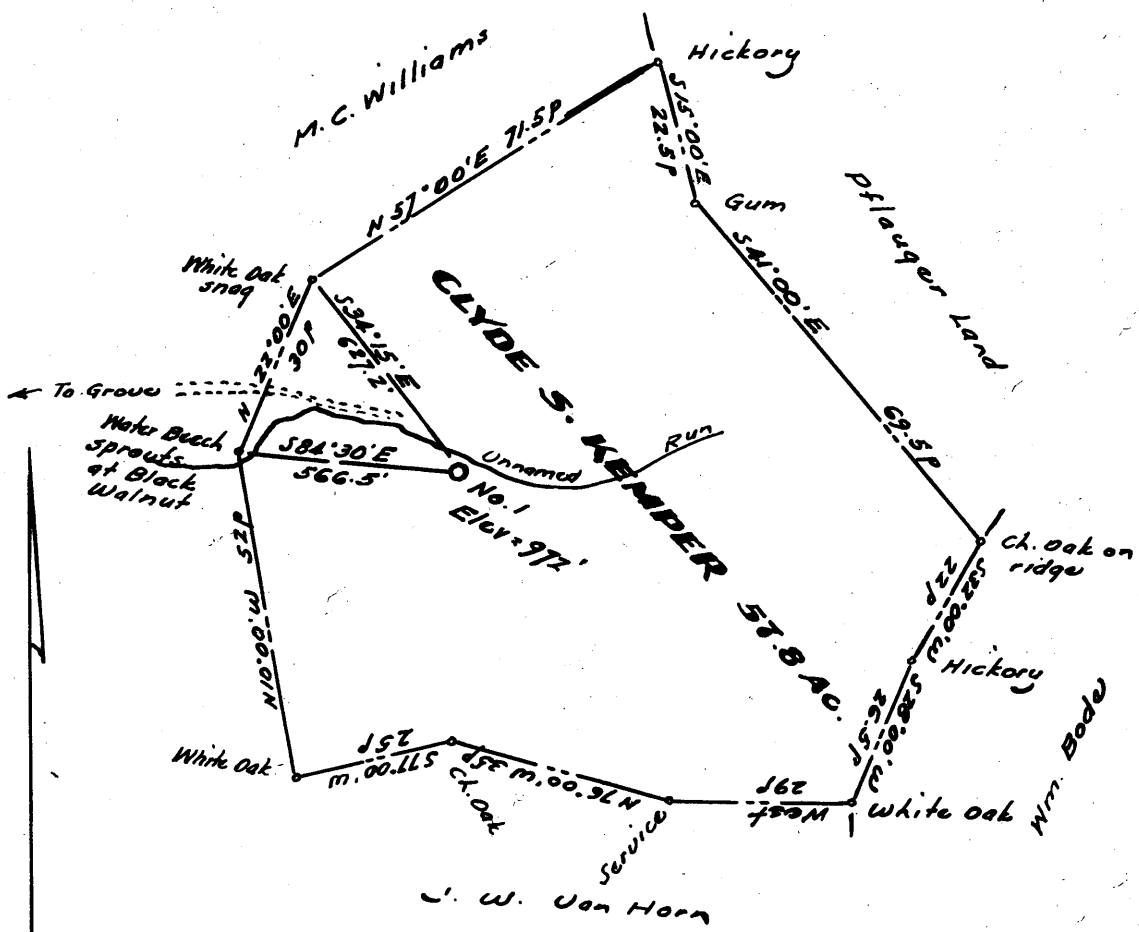


Latitude 39° 10'

Longitude 80° 45'



- New Location.
- Drill Deeper.....
- Redrill.....
- Abandonment.....

Company ALLEGHENY LAND & MIN. CO.
 Address 318 Professional Bldg., Clarksburg, W. Va.
 Farm Clyde S. Kemper (Chapman)
 Tract _____ Acres 57.8 Lease No. _____
 Well (Farm) No. One Serial No. A-138
 Elevation (Spirit Level) 972
 Quadrangle Halbrook, EC
 County Doddridge District Cane
 Engineer W. S. [Signature]
 Engineer's Registration No. 1227
 File No. _____ Drawing No. _____
 Date March, 1961 Scale 1" = 300'

STATE OF WEST VIRGINIA
 DEPARTMENT OF MINES
 OIL AND GAS DIVISION
 CHARLESTON

WELL LOCATION MAP
 FILE NO. DOD-536

+ Denotes location of well on United States Topographic Maps, scale 1 to 62,500, latitude and longitude lines being represented by border lines as shown.

— Denotes one inch spaces on border line of original tracing.



STATE OF WEST VIRGINIA
DEPARTMENT OF MINES
OIL AND GAS DIVISION 2

Quadrangle HOLBROOK

Permit No. Dod-536

WELL RECORD

Oil or Gas Well Gas
(KIND)

Company Allegheny Land & Mineral Co.
Address Clarksburg, W.Va.
Farm Clyde S. Kemper (Chapman) Acres 57.8
Location (waters) _____
Well No. A-138 Elev. 972
District Cove County Doddridge
The surface of tract is owned in fee by Clyde S. Kemper Hrs.
Address Salem, W.Va.

Mineral rights are owned by Same
Address _____

Drilling commenced April 3, 1961
Drilling completed May 5, 1961
Date Shot _____ From _____ To _____

With _____
Open Flow 80/10ths Water in 1/8" Inch
_____ /10ths Merc. in _____ Inch

Volume 23,000 Cu. Ft.
Rock Pressure None taken lbs. hrs.

Oil _____ bbls., 1st 24 hrs.
WELL ACIDIZED _____

WELL FRACTURED May 11, 1961 by Dowell - Water, sand, acid.

RESULT AFTER TREATMENT ~~35/10 Water 2" 119 M~~ 8/10 Water 2" 119 M

ROCK PRESSURE AFTER TREATMENT 210# 72 hr.

Fresh Water Hole full Feet 1685-1695 Salt Water _____ Feet

| Casing and Tubing | Used in Drilling | Left in Well | Packers |
|-------------------|------------------|--------------|------------------------------|
| Size | | | Kind of Packer |
| 16 | | | |
| 13 12" | 21' | 21' | |
| 8 3/4 | 346' | | Size of |
| 6 3/8 | 1084' | | Depth set |
| 5 3/16 | 1777' | | |
| 3 4 1/2" | 2005' | 2005' | Perf. top <u>1966</u> |
| 2 | | | Perf. bottom <u>1974 1/2</u> |
| Liners Used | | | Perf. top _____ |
| | | | Perf. bottom _____ |

CASING CEMENTED 4 1/2" SIZE 445 No. Ft. 5-7-61 Date
20 bags cement 50 gal Coolment

COAL WAS ENCOUNTERED AT _____ FEET _____ INCHES
_____ FEET _____ INCHES FEET _____ INCHES
_____ FEET _____ INCHES FEET _____ INCHES

| Formation | Color | Hard or Soft | Top | Bottom | Oil, Gas or Water | Depth | Remarks |
|--------------------|-------|--------------|-----|--------|-----------------------|------------|-----------|
| Soil | | | 0 | 7 | | | |
| Gravel | | | 7 | 15 | Water | 10 and 40' | Hole full |
| Red Rock | | | 15 | 50 | 10 and 40' | | |
| Slate & shells | | | 50 | 100 | | | |
| Red Rock | | | 100 | 135 | | | |
| Lime | | | 135 | 145 | | | |
| Red Rock | | | 145 | 155 | | | |
| Shale | Blue | | 155 | 165 | | | |
| Sand | | | 165 | 195 | | | |
| Slate | | | 195 | 200 | | | |
| Red Rock | | | 200 | 212 | | | |
| Slate & shells | | | 212 | 250 | | | |
| Red Rock | | | 250 | 290 | | | |
| Slate | | | 290 | 300 | | | |
| Sand | | | 300 | 328 | | | |
| Slate & shells | | | 328 | 380 | | | |
| Red Rock & Lime | | | 380 | 430 | | | |
| Slate & shells | | | 430 | 455 | | | |
| Lime | | Hard | 455 | 480 | | | |
| Slate & Lime | | | 480 | 560 | | | |
| Red Rock | | | 560 | 572 | | | |
| Slate & shells | | | 572 | 600 | | | |
| Red Rock | | | 600 | 710 | | | |
| Slate & shells | | | 710 | 750 | | | |
| Little Dunkard | | | 750 | 775 | | | |
| Slate | | Dark | 775 | 795 | | | |
| Slate & shells | | | 795 | 830 | | | |
| Red Rock | | | 830 | 880 | | | |
| Slate | Black | | 880 | 935 | | | |
| Lime, shell, slate | | | 935 | 1010 | | | |

| Formation | Color | Hard or Soft | Top ² | Bottom | Oil, Gas or Water | Depth Found | Remarks |
|------------------------|-------|--------------|------------------|--------|-------------------|-------------|-------------------------|
| Sand | | | 1010 | 1035 | | | |
| Slate & shells | | | 1035 | 1084 | | | |
| Sand | | | 1084 | 1140 | | | |
| Slate & shells | | | 1140 | 1210 | | | |
| Sand | | | 1210 | 1235 | | | |
| Slate & shells | | | 1235 | 1300 | | | |
| Sand | | | 1300 | 1355 | | | |
| Slate | Black | | 1355 | 1445 | | | |
| Slate & shells - white | | | 1445 | 1470 | | | |
| Sand | | | 1470 | 1590 | | | |
| Slate | Black | | 1590 | 1650 | | | |
| Sand | | | 1650 | 1700 | Water | 1685-1695 | Hole full |
| Slate | Black | | 1700 | 1748 | | | |
| Slate & shells | | | 1748 | 1790 | | | |
| Lime | | | 1790 | 1815 | | | |
| Sand | | | 1815 | 1830 | | | |
| Lime | | | 1830 | 1885 | | | |
| Sand | | | 1885 | 1980 | Gas | 1916-1926 | 32/10 W $\frac{1}{4}$ " |
| Slate | | | 1980 | 2005 | Gas | 1967-1977 | 80/10 W $\frac{1}{2}$ " |
| Total depth | | | | 2005 | | | 23,000 cu ft. |

Date May 17, 1961

APPROVED Allegheny Land & Mineral Co., Owner

By Claron Dawson, Mahone, W.Va.
(Title)