

New Location
 Drill Deeper
 Abandonment issued 7-14-70

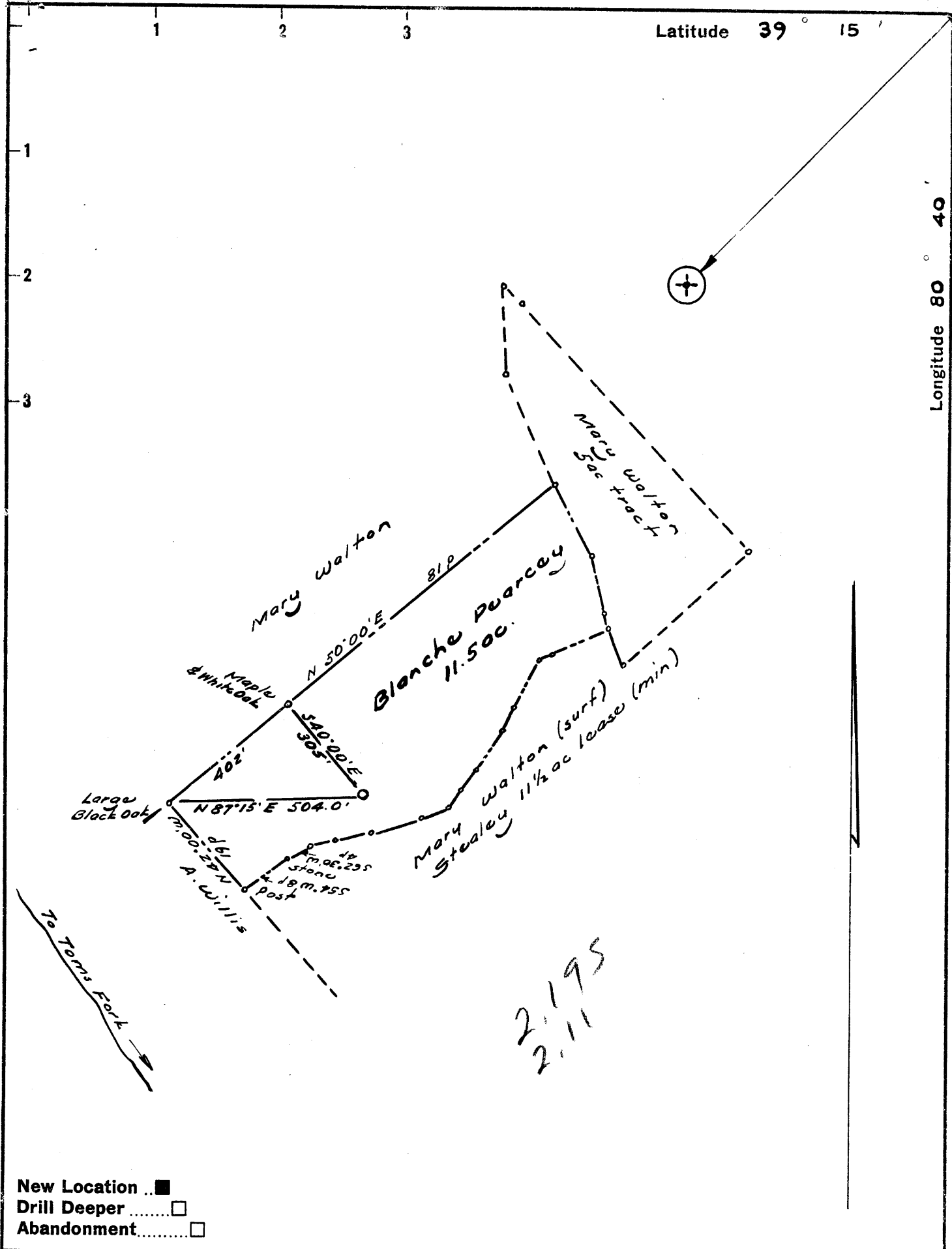
RHPurgley, 338 Punsleys Pulling & Well Service
 Company **FERRELL L. PRIOR**
 Box 51, LeRoy, West Virginia 25252
 Address **700 Union Trust Bldg., Parkersburg, W. Va.**
 Farm **Blanche Pearcey**
 Tract _____ Acres **11 1/2** Lease No. _____
 Well (Farm) No. **One** Serial No. _____
 Elevation (Spirit Level) **988'**
 Quadrangle **Vadis** *New*
 County **Doddridge** District **New Milton**
 Engineer *W. Steadley*
 Engineer's Registration No. **1227**
 File No. _____ Drawing No. _____
 Date **October 1961** Scale **1" = 200'**

STATE OF WEST VIRGINIA
 DEPARTMENT OF MINES
 OIL AND GAS DIVISION
 CHARLESTON

WELL LOCATION MAP
 FILE NO. **Dod-651-P**

+ Denotes location of well on United States Topographic Maps, scale 1 to _____ latitude and longitude lines being represented by border lines as shown.

- Denotes one inch spaces on border line of original tracing.



Company **FERRELL L. PRIOR**

Address **700 Union Trust Bldg., Parkersburg, W. Va.**

Farm **Blanche Pearcay**

Tract _____ Acres **11 1/2** Lease No. _____

Well (Farm) No. **One** Serial No. _____

Elevation (Spirit Level) **988'**

Quadrangle **Vadis NW**

County **Doddridge** District **New Milton**

Engineer *W. H. Stealy*

Engineer's Registration No. **1227**

File No. _____ Drawing No. _____

Date **October 1961** Scale **1" = 20 p**

STATE OF WEST VIRGINIA
 DEPARTMENT OF MINES
 OIL AND GAS DIVISION
 CHARLESTON

WELL LOCATION MAP
 FILE NO. **Dod-651**

+ Denotes location of well on United States Topographic Maps, scale 1 to _____ latitude and longitude lines being represented by border lines as shown.

- Denotes one inch spaces on border line of original tracing.



STATE OF WEST VIRGINIA
DEPARTMENT OF MINES
OIL AND GAS DIVISION 12

Quadrangle Vadis

Permit No. Dod - 651

WELL RECORD

Oil or Gas Well Oil
(KIND)

Company Ferrell L. Prior
Address 720 Union Trust Bldg., Parkersburg, W. Va.
Farm Blanche Pearcey Acres 11 1/2
Location (waters) Tom's Fork
Well No. One Elev. 988
District New Milton County Doddridge
The surface of tract is owned in fee by Blanche Pearcey
Address New Milton, W. Va.
Mineral rights are owned by Blanche Pearcey
Address New Milton, W. Va.
Drilling commenced November 1, 1961
Drilling completed November 21, 1961
Date Shot _____ From _____ To _____
With _____
Open Flow _____ /10ths Water in _____ Inch
_____ /10ths Merc. in _____ Inch
Volume not taken _____ Cu. Ft.
Rock Pressure not taken lbs. _____ hrs.
Oil show oil & gas _____ bbls., 1st 24 hrs.
WELL ACIDIZED _____

| Casing and Tubing | Used in Drilling | Left in Well | Packers |
|-------------------|------------------|--------------|--------------------------|
| Size | | | Kind of Packer |
| 16 | | | |
| 13 | | | |
| 10 | 40' | 40 | Size of |
| 8 1/2 | 2160 | 2160 | Depth set |
| 6 3/8 | | | |
| 5 3/16 | | | |
| 3 | | | Perf. top <u>2135</u> |
| 2 | | | Perf. bottom <u>2142</u> |
| Liners Used | | | Perf. top _____ |
| | | | Perf. bottom _____ |

CASING CEMENTED 4 1/2 SIZE 2160 No. Ft. 11/21/61
60 sks. cement - Lawson Cementing co.

COAL WAS ENCOUNTERED AT _____ FEET _____ INCHES
_____ FEET _____ INCHES _____ FEET _____ INCHES
_____ FEET _____ INCHES _____ FEET _____ INCHES

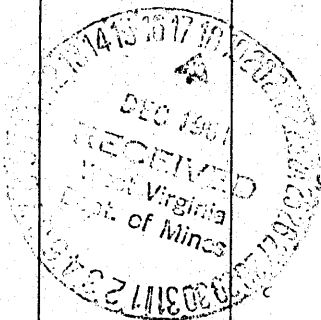
WELL FRACTURED 750 bbl. water 32,500 lbs. of sand
Drilled with rotary circulating gel

RESULT AFTER TREATMENT 50 bbls. oil

ROCK PRESSURE AFTER TREATMENT 500 lbs. 24 hrs.

Fresh Water _____ Feet _____ Salt Water _____ Feet

| Formation | Color | Hard or Soft | Top | Bottom | Oil, Gas or Water | Depth | Remarks |
|------------------|-------|--------------|------|--------|-------------------|-------|------------|
| Soil | | | 0 | 40 | | | |
| Red rock | | | 40 | 73 | | | |
| Shale | | | 73 | 195 | | | |
| Sandy shale | | | 195 | 250 | | | |
| Sand | | | 250 | 267 | | | |
| Red rock & shale | | | 267 | 274 | | | |
| Sand | | | 274 | 328 | | | |
| Shale | | | 328 | 341 | | | |
| Shale & shells | | | 341 | 385 | | | |
| Red rock | | | 385 | 425 | | | |
| Sand | | | 425 | 468 | | | |
| Lime | | | 468 | 650 | | | |
| Shale | | | 650 | 683 | | | |
| Sand | | | 683 | 745 | | | |
| Sand | | | 745 | 791 | | | |
| Red rock | | | 791 | 825 | | | |
| Sand | | | 825 | 839 | | | |
| Red rock | | | 839 | 995 | | | |
| Sand | | | 995 | 1017 | | | |
| Shale & red rock | | | 1017 | 1551 | | | |
| Sand | | | 1551 | 1587 | | | |
| Shale | | | 1587 | 1632 | | | |
| Shale | | | 1632 | 1667 | | | |
| Sand | | | 1667 | 1705 | | | |
| Shale | | | 1705 | 1742 | | | |
| Sand | | | 1742 | 1796 | | | |
| Sand, shale | | | 1796 | 1980 | | | |
| Sand | | | 1980 | 1990 | | | |
| Shale | | | 1990 | 2004 | | | Maxon Sand |



| Formation | Color | Hard or Soft | Top <i>12</i> | Bottom | Oil, Gas or Water | Depth Found | Remarks |
|-----------|-------|--------------|---------------|--------|-------------------|-------------|------------|
| Lime | | | 2004 | 2056 | | | Big Lime |
| Shale | | | 2056 | 2060 | | | |
| Sand | | | 2060 | 2150 | oil & gas | | Injun Sand |

Date _____, 19__

APPROVED _____, Owner

By _____
(Title)