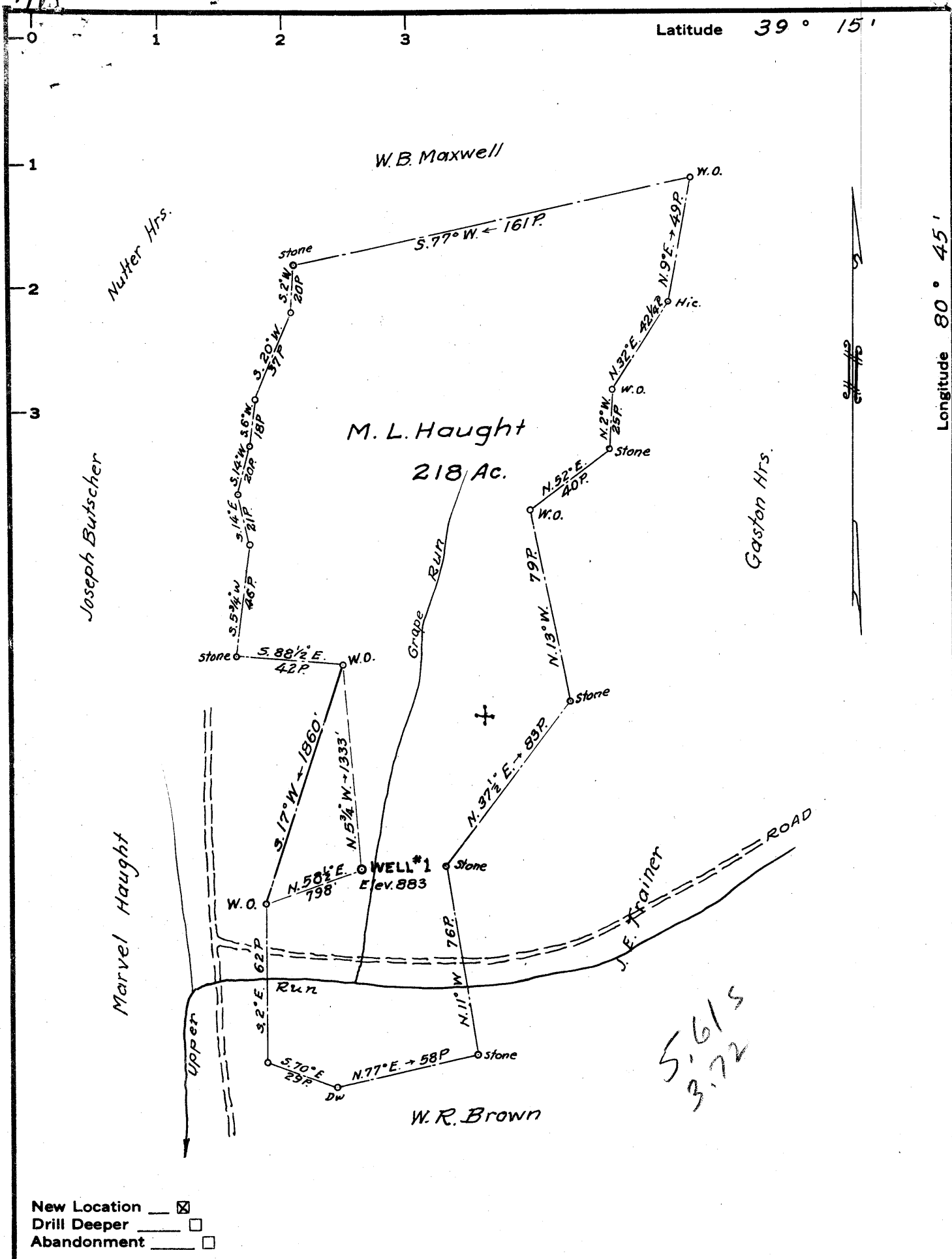


Latitude 39° 15'

Longitude 80° 45'



- New Location
- Drill Deeper
- Abandonment

Company Wm. Gruber  
 Address 309 1/2 Third St. St. Marys, W. Va.  
 Farm M. L. Haught  
 Tract 1 Acres 218 Lease No. \_\_\_\_\_  
 Well (Farm) No. 1 Serial No. \_\_\_\_\_  
 Elevation (Spirit Level) 883  
 Quadrangle Holbrook NE  
 County Doddridge District Southwest  
 Engineer Parker E. Pature  
 Engineer's Registration No. 485  
 File No. \_\_\_\_\_ Drawing No. \_\_\_\_\_  
 Date May 7, 1962 Scale 1" = 50 P.

STATE OF WEST VIRGINIA  
 DEPARTMENT OF MINES  
 OIL AND GAS DIVISION  
 CHARLESTON

**WELL LOCATION MAP**  
 FILE NO. Dod-782  
plugged 7/4/1962

+ Denotes location of well on United States Topographic Maps, scale 1 to 62,500, latitude and longitude lines being represented by border lines as shown.

— Denotes one inch spaces on border line of original tracing.



STATE OF WEST VIRGINIA  
DEPARTMENT OF MINES  
OIL AND GAS DIVISION 3

Quadrangle HOLBROOK

WELL RECORD

Permit No. DOD-782

Oil or Gas Well dry hole  
(KMS)

Company W. J. Huber, Inc. June Pet. Co  
Address 309 1/2 Third Street  
Farm Haught Acres 180  
Location (waters) \_\_\_\_\_  
Well No. \_\_\_\_\_ Elev. 883  
District SW County Dodderidge  
The surface of tract is owned in fee by W. J. Haught  
Address Oxford, W. Va  
Mineral rights are owned by W. J. Haught & heirs  
Address Oxford, W. Va  
Drilling commenced May 18, 1932  
Drilling completed June 23, 1932  
Date Shot \_\_\_\_\_ From \_\_\_\_\_ To \_\_\_\_\_  
With \_\_\_\_\_  
Open Flow \_\_\_\_\_ /10ths Water in \_\_\_\_\_ Inch  
\_\_\_\_\_ /10ths Merc. in \_\_\_\_\_ Inch  
Volume \_\_\_\_\_ Cu. Ft.  
Rock Pressure \_\_\_\_\_ lbs. \_\_\_\_\_ hrs.  
Oil \_\_\_\_\_ bbls., 1st 24 hrs.  
WELL ACIDIZED \_\_\_\_\_  
WELL FRACTURED \_\_\_\_\_

Casing and Tubing	Used in Drilling	Left in Well	Packers
Size			Kind of Packer
16			
13		<u>22</u>	
10	<u>364</u>		Size of
8 1/4	<u>980</u>		
6 3/4			Depth set
5 3/16			
3			Perf. top
2			Perf. bottom
Liners Used			Perf. top
			Perf. bottom

CASING CEMENTED \_\_\_\_\_ SIZE \_\_\_\_\_ No. Ft. \_\_\_\_\_ Date \_\_\_\_\_

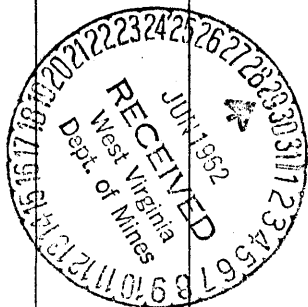
COAL WAS ENCOUNTERED AT \_\_\_\_\_ FEET \_\_\_\_\_ INCHES  
\_\_\_\_\_ FEET \_\_\_\_\_ INCHES \_\_\_\_\_ FEET \_\_\_\_\_ INCHES  
\_\_\_\_\_ FEET \_\_\_\_\_ INCHES \_\_\_\_\_ FEET \_\_\_\_\_ INCHES

RESULT AFTER TREATMENT \_\_\_\_\_

ROCK PRESSURE AFTER TREATMENT \_\_\_\_\_

Fresh Water \_\_\_\_\_ Feet \_\_\_\_\_ Salt Water \_\_\_\_\_ Feet \_\_\_\_\_

Formation	Color	Hard or Soft	Top	Bottom	Oil, Gas or Water	Depth	Remarks



Dod-782

Formations	Top	Bottom	CASING RECORD
Clay	0	10	L#*# <sup>1</sup>
Red Rock	10	15	13-3/8 - 1 Jt 22'
Sand	15	45	10-3/4 - 354'
Red Rock	45	50	8 980'
Slate	50	65	
Red Rock	65	90	
Slate	90	150	- .126-135 water 35 gal. hr.
Lime	150	160	
Red Rock	160	185	
Sand	185	205	
Slate	205	240	
Lime	240	255	
Red Rock	255	265	
Slate & Shells	265	375	
Red Rock	375	470	
Sand	470	490	
Slate, white	490	500	
Red Rock	500	615	
Lime	515	520	
Slate, blue	520	560	
Dark Lime	560	580	
Red rock	580	620	
Lime	620	630	
Red rock	630	655	
Black slate	655	670	
Red Rock	670	680	
Lime	680	715	
Sand	715	745	
Black Slate	745	750	
Sand	750	817	
Slate	817	880	
Lime	880	905	
Sand gas	905	950	
Slate and shells	950	1005	8" casing set 980'
Lime	1005	1015	
Slate	1015	1035	
Sand & Salt	1035	1065	
Slate shells	1065	1100	
Black slate	1100	1235	
Sand & Salt	1235	1303	
Break	1303	1306	Gas 1345 - 1350
Sand & Salt	1306	1362	
Black Slate	1362	1425	
Sand	1425	1460	
Black slate	1460	1475	
Slate & Shells	1475	1500	
Red Rock	1500	1540	
Black Slate	1540	1555	
Gritty Lime	1555	1565	
Slate	1565	1569	
Lime Little	1569	1590	
Pencil	1590	1595	
Big Lime	1595	1660	
Sand	1660	1707	Bubble gas 1660-1665
Lime Break	1707	1715	Show oil 1665-1670
Squaw Sand	1715	1720	" gas 1690
Black Slate	1720	1760	
Lime	1760	1765	
Slate	1765	1860	" gas 1880 1885
Lime	1860	1875	
Sand	1875	1940	
Lime	1940	1960	
Slate	1960	1965	
Gritty lime	1965	2005	
Black salte & shell	2005	2065	
Sand	2065	2070	
Slate	2070	2255	
Sand	2255	2265	
Slate	2265	2285	
Sand	2285	2296	Slate 2296
Total depth	2296	2352	

