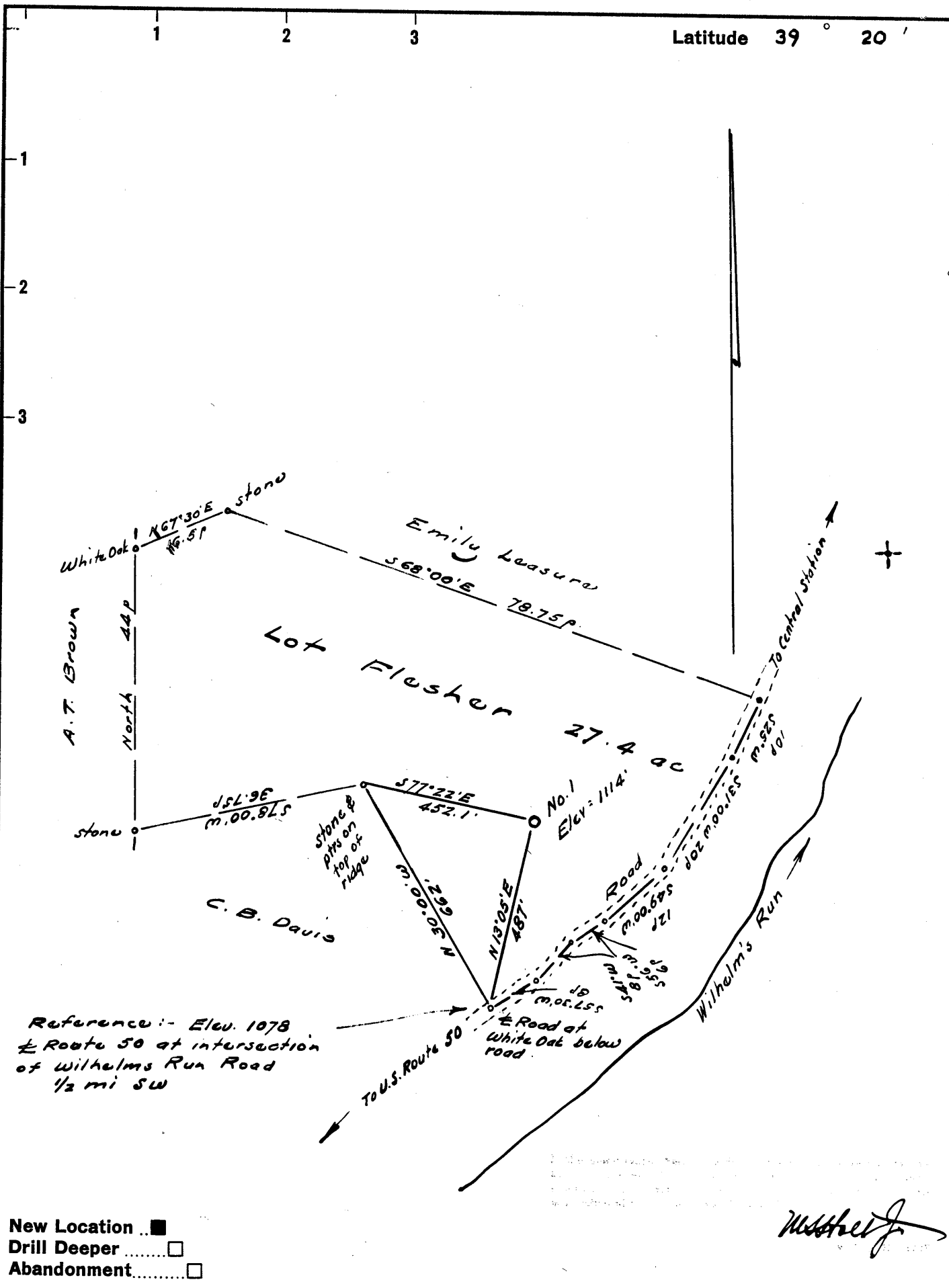


Latitude 39° 20'

Longitude 80° 50'



- New Location ..
- Drill Deeper
- Abandonment.....

W. H. H. J.

Company **STALLWORTH OIL & GAS**, INC.
 Address 208 Nelson Bldg., Charleston, West Va.
 Farm Lot Flesher
 Tract _____ Acres 27.375 Lease No. _____
 Well (Farm) No. One Serial No. _____
 Elevation (Spirit Level) 1114'
 Quadrangle West Union SC
 County Doddridge District Central
 Engineer *W. H. H. J.*
 Engineer's Registration No. 1227
 File No. _____ Drawing No. _____
 Date Feb. 15, 1963 Scale 1" = 330'

STATE OF WEST VIRGINIA
 DEPARTMENT OF MINES
 OIL AND GAS DIVISION
 CHARLESTON

WELL LOCATION MAP
 FILE NO. Dod- 936
Cancelled

+ Denotes location of well on United States Topographic Maps, scale 1 to 62,500, latitude and longitude lines being represented by border lines as shown.

- Denotes one inch spaces on border line of original tracing.