

New Location
 Drill Deeper
 Abandonment

Company SOUTHERN TRIANGLE OIL CO.
 Address 104 Bank St. Weston, W. Va.
 Farm John Irons
 Tract _____ Acres 67 Lease No. _____
 Well (Farm) No. Three Serial No. _____
 Elevation (Spirit Level) 1007'
 Quadrangle Vadis *WC*
 County Doddridge District New Milton
 Engineer [Signature]
 Engineer's Registration No. 1227
 File No. _____ Drawing No. _____
 Date March 5, 1963 Scale 1" = 500'

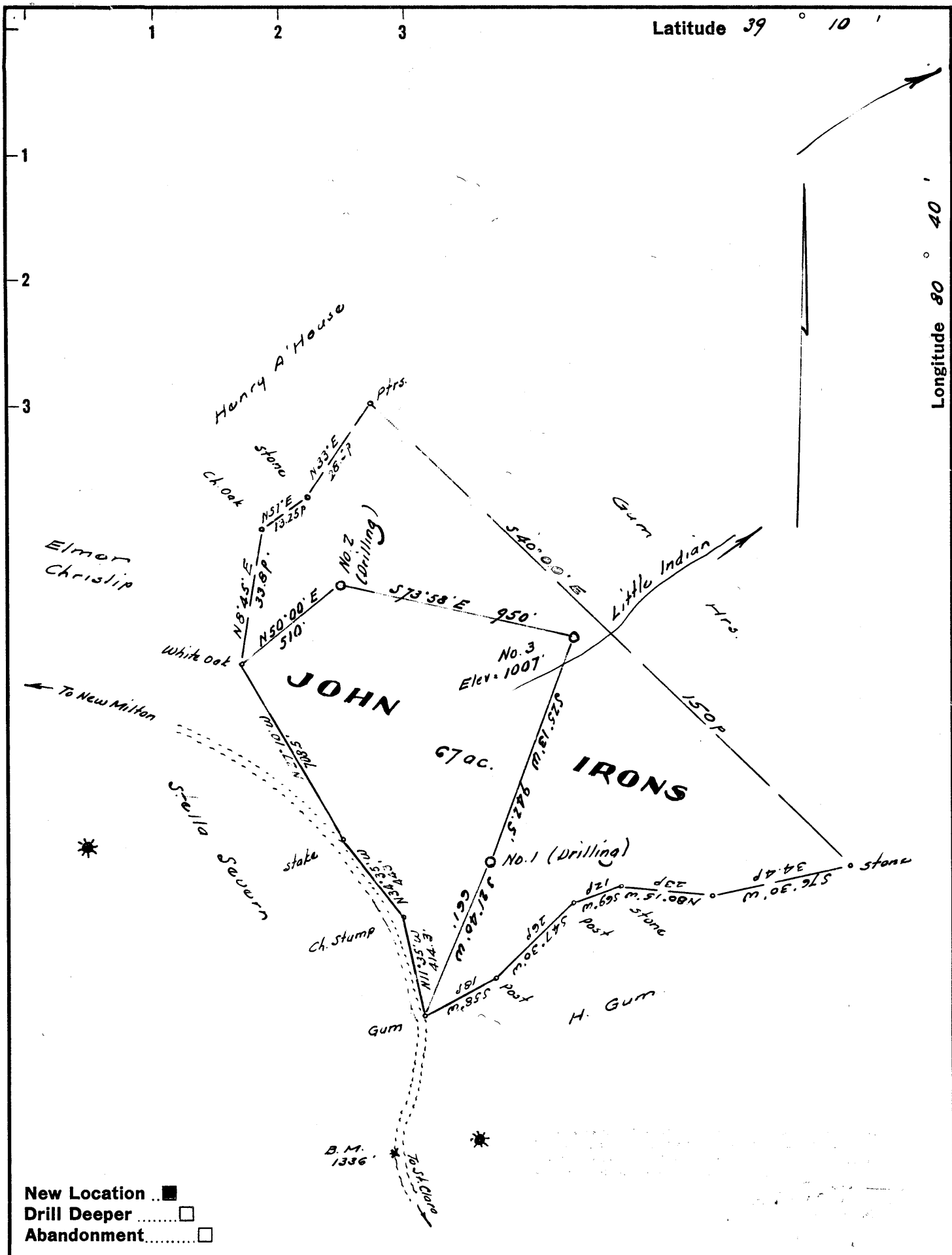
STATE OF WEST VIRGINIA
 DEPARTMENT OF MINES
 OIL AND GAS DIVISION
 CHARLESTON

WELL LOCATION MAP
 FILE NO. Dod-939
 DRILLING CANCELED

+ Denotes location of well on United States Topographic Maps, scale 1 to 62,500, latitude and longitude lines being represented by border lines as shown.

- Denotes one inch spaces on border line of original tracing.

SEP 11 1978



Company SOUTHERN TRIANGLE OIL CO.
 Address 104 Bank St. Weston, W. Va.
 Farm John Irons
 Tract _____ Acres 67 Lease No. _____
 Well (Farm) No. Three Serial No. _____
 Elevation (Spirit Level) 1007'
 Quadrangle Vadis C
 County Doddridge District New Milton
 Engineer [Signature]
 Engineer's Registration No. 1227
 File No. _____ Drawing No. _____
 Date March 5, 1963 Scale 1" = 500'

STATE OF WEST VIRGINIA
 DEPARTMENT OF MINES
 OIL AND GAS DIVISION
 CHARLESTON

WELL LOCATION MAP
 FILE NO. Dod - 939
Cancelled

+ Denotes location of well on United States Topographic Maps, scale 1 to 62,500, latitude and longitude lines being represented by border lines as shown.

- Denotes one inch spaces on border line of original tracing.

6-6 271