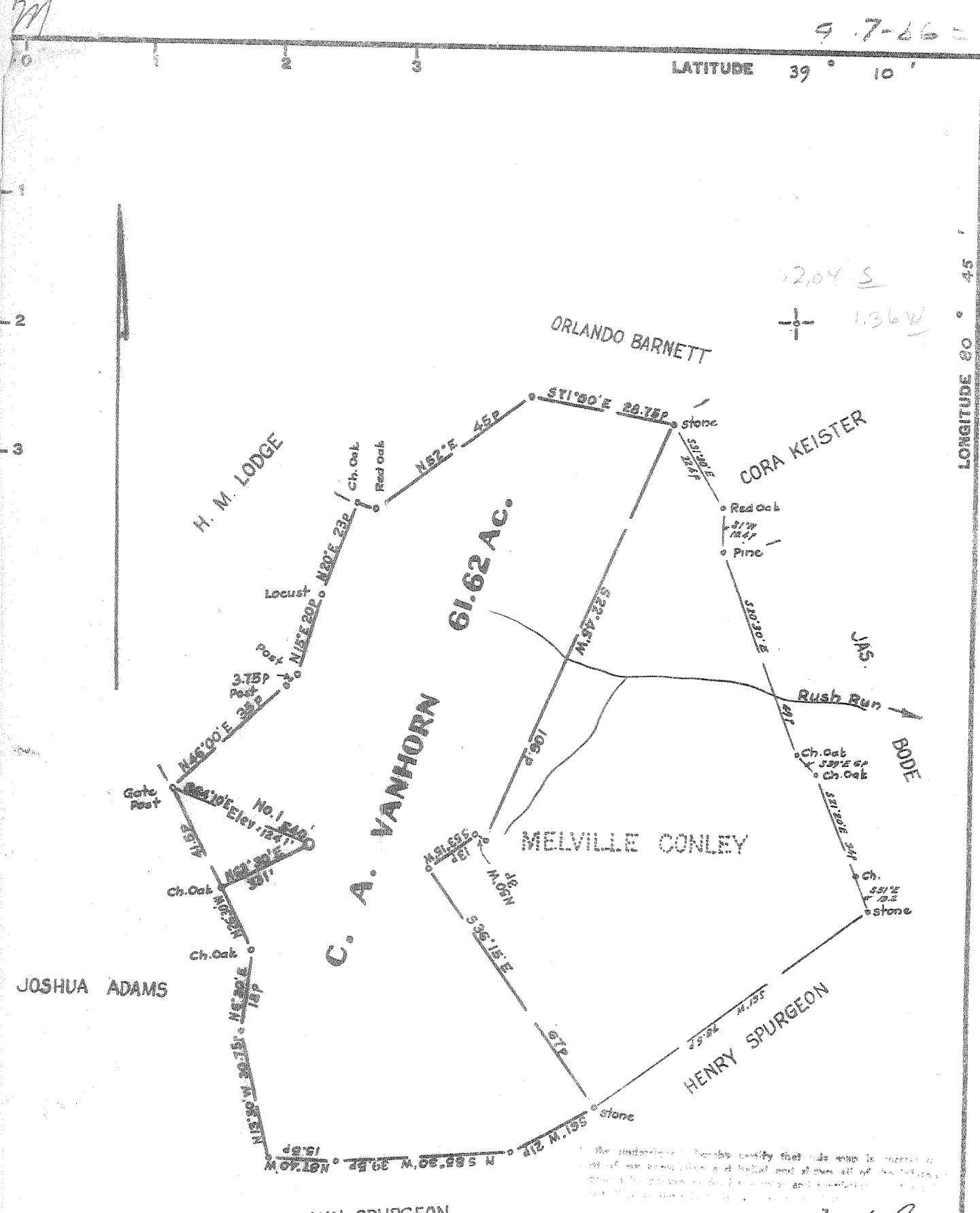


9.7-66-405

P

LATITUDE 39° 10'

LONGITUDE 80° 45'



The undersigned hereby certify that this map is correct to the best of our knowledge and belief and shows all of the features shown on the ground and as shown and described in the accompanying plat.

*W. H. ...*

New Location.....  
 Drill Deeper.....  
 Abandonment.....

Elev. reference :- B.M. at Grove - 918'  
 Error in Closure :- Less than 1' in 200'

Company MID-AMERICAN EXPLORATION  
 Address P.O. Box 224 Parkersburg W. Va.  
 Farm C. A. Vanhorn  
 Tract \_\_\_\_\_ Acres 61.62 Lease No. \_\_\_\_\_  
 Well (Farm) No. One Serial No. \_\_\_\_\_  
 Elevation (Spirit Level) 1241'  
 Quadrangle Holbrook - EC  
 County Doddridge District Cove  
 Engineer W. H. ...  
 Engineer's Registration No. 1227  
 File No. \_\_\_\_\_ Drawing No. \_\_\_\_\_  
 Date March 27, 1966 Scale 1" = 300' = 495'

STATE OF WEST VIRGINIA  
 DEPARTMENT OF MINES  
 OIL AND GAS DIVISION  
 CHARLESTON

**WELL LOCATION MAP**  
 FILE NO. DDO - 1408

† Denotes location of well on United States Topographic Maps, scale 1 to 62,500, latitude and longitude lines being represented by border lines as shown.

— Denotes one inch spaces on border line of original tracing.



STATE OF WEST VIRGINIA  
DEPARTMENT OF MINES  
OIL AND GAS DIVISION 14

Rotary   
Spudder   
Cable Tools   
Storage

Quadrangle Holbrook

WELL RECORD

Permit No. Dod-1409

Oil or Gas Well Comb.  
(KIND)

Company Mid-American Exploration Co.  
Address 914-15 Goff Bldg. Clarksburg, W. Va.  
Farm C.A. Van Horn Acres 65  
Location (waters) Rush Creek Cove Creek  
Well No. 1 one Elev. 1241  
District Cove County Doddridge  
The surface of tract is owned in fee by Melville Conley  
Blandville ~~Acres~~ West Virginia  
Mineral rights are owned by Malcomb Conley et al.  
Address \_\_\_\_\_

Casing and Tubing	Used in Drilling	Left in Well	Packers
Size			Kind of Packer
16			
13			
10	208		Size of
8 1/4	1290		
6 5/8			Depth set
5 3/16			
3			Perf. top <u>2210</u>
2			Perf. bottom <u>2248</u>
Liners Used			Perf. top _____
<u>4 1/2"</u>	<u>2294'</u>	<u>2294'</u>	Perf. bottom _____

Drilling commenced July 20, 1966  
Drilling completed October 23, 1966  
Date Shot \_\_\_\_\_ From \_\_\_\_\_ To \_\_\_\_\_  
With \_\_\_\_\_  
Open Flow /10ths Water in \_\_\_\_\_ Inch  
/10ths Merc. in \_\_\_\_\_ Inch  
Volume 1,000,000 Cu. Ft.  
Rock Pressure \_\_\_\_\_ lbs. \_\_\_\_\_ hrs.  
Oil \_\_\_\_\_ bbls., 1st 24 hrs.  
WELL ACIDIZED \_\_\_\_\_

CASING CEMENTED 4 1/2" SIZE 2294 No. Ft. 10-27-66  
70 sax. Lawson Cementing Company  
COAL WAS ENCOUNTERED AT \_\_\_\_\_ FEET \_\_\_\_\_ INCHES  
\_\_\_\_\_ FEET \_\_\_\_\_ INCHES FEET \_\_\_\_\_ INCHES  
\_\_\_\_\_ FEET \_\_\_\_\_ INCHES FEET \_\_\_\_\_ INCHES

WELL FRACTURED Halliburton. 11-2-66. 40,000# 20-40 sand. 744 bbls. water.

RESULT AFTER TREATMENT 1,920,000 <sup>MCF</sup> Cubic feet. 35 ~~30/40~~ BOD. est. Big Injun  
ROCK PRESSURE AFTER TREATMENT 685 lbs. in 8 hours.  
Fresh Water \_\_\_\_\_ Feet Salt Water \_\_\_\_\_ Feet

Formation	Color	Hard or Soft	Top	Bottom	Oil, Gas or Water	Depth	Remarks
congl.		soft	0	40			
sd.	gr.	soft	40	100			
lime	gr.	hard	100	110			
sand	br.	med.	110	127			
sh.	gr.	soft	127	130			
red rock	red	soft	133	176			
sh.	gr.br.	soft	176	228			
red rock	red	soft	228	245			
sh.	red.gr.	soft	245	601			
sd.	gr	med.	601	630			
lime	gr	hard	630	650			
r.r.	red	soft	650	705			
r.r. sh.	red.gr.	med.	705	1470			
sd.	gr.br.	med.	1470	1485			
sd.y.sh.	gr.br.	med.	1485	1800			
		over.					

Feb 1967

Formation	Color	Hard or Soft	Top /	Bottom	Oil, Gas or Water	Depth Found	Remarks
sh.	br.	med.	1800	1925			
sd.	lt.gr.	med	1925	1969	gas	1955	
sh.	dk.gr.	med.	1969	2039			
sd.	gr.	hard	2039	2050			
sh.	gr.	med.	2050	2100			
lmy.sd.	lt.gr.	hard.	2100	2108	gas	2102	
sh.	dk.gr.	med.	2108	2120			
lime	lt.gr.	hard.	2120	2188			
sdylim.	gr.br.	med.	2180	2195	gas	2190	
sd.	gr.tan	med.	2195	2235	oil-gas	2195	
sd.	"	"	2235	2258	oil-gas	2235	
sh.	gr.br.	med.	2258	2300 T.D.			

Date February 10, \_\_\_\_\_, 1967.

APPROVED Mid American Exploration Co., Owner

By Richard M. Gilson  
(Title)