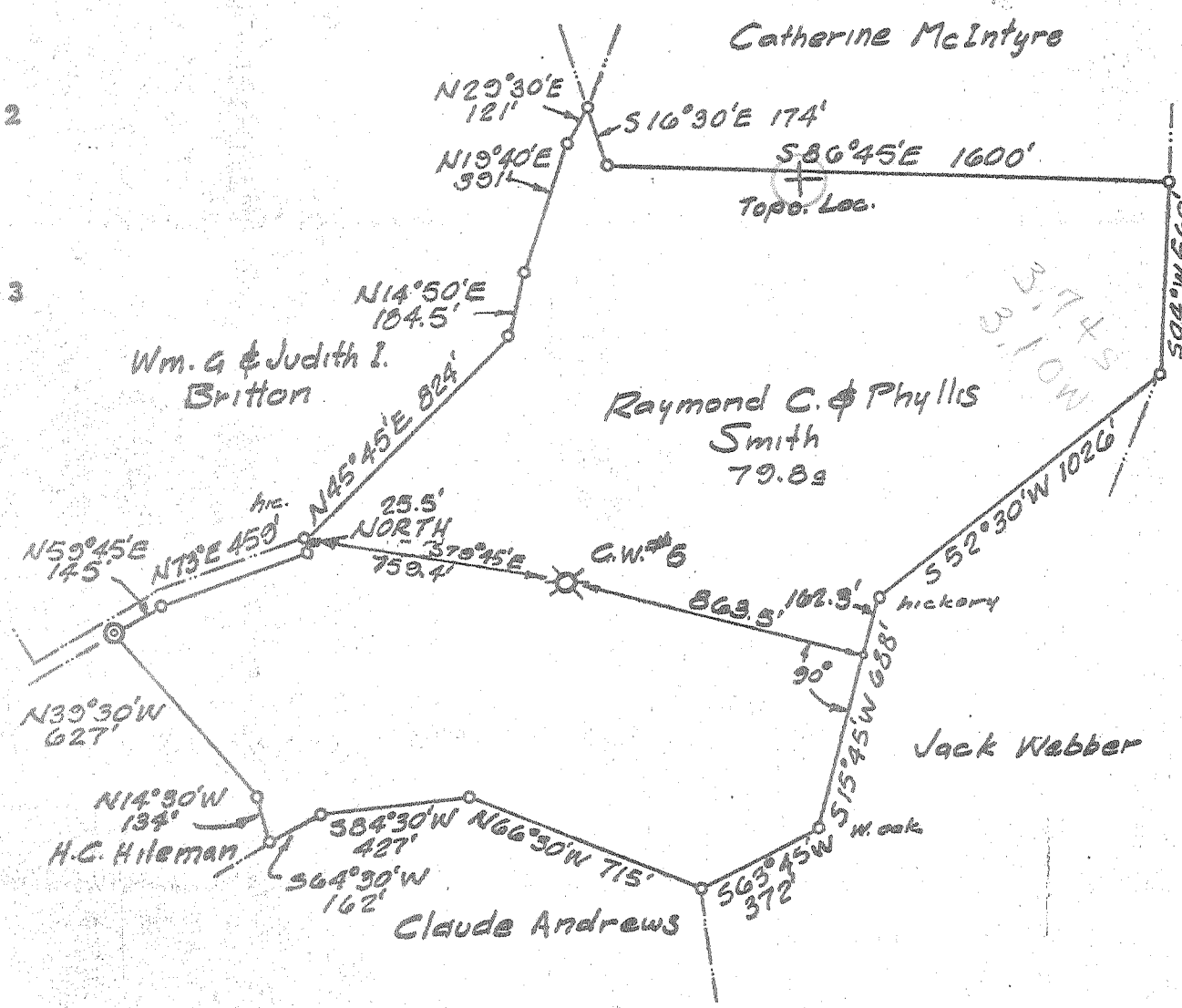


Latitude 39°20'

Longitude 80°40'



- New Location
- Drill Deeper
- Redrill
- Abandonment

"I, the undersigned, hereby certify that this map is correct to the best of my knowledge and belief and shows all the information required by paragraph 6 of the rules and regulations of the oil and gas section of the mining laws of West Virginia."

|                          |                                |           |  |
|--------------------------|--------------------------------|-----------|--|
| Company                  | SPENCER - JACKSON GAS CO.      |           |  |
| Address                  | P.O. Box 351 CLARKSBURG W.VA.  |           |  |
| Farm                     | JONES - BLAIR                  |           |  |
| Tract #                  | Acres                          | Lease No. |  |
| 5                        | 300                            | 4624      |  |
| Well (Farm) No.          | Serial No.                     |           |  |
| 5                        |                                |           |  |
| Elevation (Spirit Level) | 910.4                          |           |  |
| Quadrangle               | CENTERPOINT SW                 |           |  |
| County                   | DODD RIDGE District West Union |           |  |
| Surveyed by              | TODD FENNER Per [Signature]    |           |  |
| File No.                 | Drawing No.                    |           |  |
| 70-9                     | 1                              |           |  |
| Date                     | Scale                          |           |  |
| 28 JAN '70               | 1" = 500'                      |           |  |

STATE OF WEST VIRGINIA  
DEPARTMENT OF MINES  
OIL AND GAS DIVISION  
CHARLESTON

**WELL LOCATION MAP**  
FILE NO. Dodd-1581

+ Denotes location of well on United States Topographic Maps, scale 1 to 62,500, latitude and longitude lines being represented by border lines as shown.

- Denotes one inch spaces on border line or original tracing.

6-6 Smithton Flint Section 99

FEB 16 1970



STATE OF WEST VIRGINIA  
DEPARTMENT OF MINES  
OIL AND GAS DIVISION /

Rotary   
Spudder   
Cable Tools   
Storage   
Oil or Gas Well **GAS**  
(KIND)

Quadrangle Center  
Permit No. Dodd. 1591

**WELL RECORD**

Company Spencer-Jackson Gas Co.  
Address P.O. Box 351 Clarksburg, W.Va.  
Farm B.C. Jones (Jones Blair) Acres. 300  
Location (waters) Middle Island Creek  
Well No. 5 Elev. 916.4  
District West Union County Doddridge  
The surface of tract is owned in fee by Jack Webber  
Address West Union, W.Va.  
Mineral rights are owned by Jones Heirs  
Address Morgantown, W.Va.  
Drilling commenced February 5, 1970  
Drilling completed March 4, 1970  
Date Shot From To  
With  
Open Flow /10ths Water in Inch  
/10ths Merc. in Inch  
Volume Show Cu. Ft.  
Rock Pressure 115 lbs. 24 hrs.  
Oil bbls., 1st 24 hrs.  
WELL ACIDIZED (DETAILS)  
WELL FRACTURED (DETAILS) Used 30,000 Lbs. Sand, 500 BBL. Water, 4500 Gal. Acid.  
RESULT AFTER TREATMENT (Initial open Flow or bbls.) 100,000  
ROCK PRESSURE AFTER TREATMENT 150 Lbs. HOURS 24  
Fresh Water None Feet Salt Water None Feet  
Producing Sand Big Injun Depth 1730 to 1735

| Casing and Tubing | Used in Drilling | Left in Well | Packers        |
|-------------------|------------------|--------------|----------------|
| Size              |                  |              |                |
| 16                | 20               | 20           | Kind of Packer |
| 13                |                  |              |                |
| 10                | 223              | 223          | Size of        |
| 8 1/4             | 833              |              |                |
| 6 5/8             |                  |              | Depth set      |
| 5 3/16            |                  |              |                |
| 4 1/2             | 1864             | 1864         |                |
| 3                 |                  |              | Perf. top      |
| 2                 |                  |              | Perf. bottom   |
| Liners Used       |                  |              | Perf. top      |
|                   |                  |              | Perf. bottom   |

Attach copy of cementing record. 18 1/4 223 2-10-70  
CASING CEMENTED 4 SIZE 1866 No. Ft. 3-17-70 Date  
Amount of cement used (bags) 155  
Name of Service Co. Greater Service  
COAL WAS ENCOUNTERED AT NONE FEET INCHES  
FEET INCHES FEET INCHES  
FEET INCHES FEET INCHES

| Formation   | Color | Hard or Soft | Top | Bottom | Oil, Gas or Water | Depth | Remarks |
|-------------|-------|--------------|-----|--------|-------------------|-------|---------|
| Top Soil    | Black | Soft         | 0   | 5      |                   |       |         |
| Clay        | Brown | "            | 5   | 10     |                   |       |         |
| Red Rock    | Red   | "            | 10  | 20     |                   |       |         |
| Lime        | White | Hard         | 20  | 35     |                   |       |         |
| Shale       | Grey  | Med          | 35  | 50     |                   |       |         |
| Broken Lime | White | Hard         | 50  | 68     |                   |       |         |
| Lime        | "     | "            | 68  | 85     |                   |       |         |
| Red Rock    | Red   | Soft         | 85  | 102    |                   |       |         |
| Lime        | Grey  | Hard         | 102 | 110    |                   |       |         |
| " Shells    | "     | Med          | 110 | 115    |                   |       |         |
| Lime        | "     | Hard         | 115 | 135    |                   |       |         |
| Red Rock    | Red   | Soft         | 135 | 170    |                   |       |         |
| Slate & Sh. | Grey  | Med.         | 170 | 187    |                   |       |         |
| Lime Shell  | "     | "            | 187 | 260    |                   |       |         |
| Shale       | Brown | "            | 260 | 268    |                   |       |         |
| Lime        | Gray  | Hard         | 268 | 292    |                   |       |         |
| Slate       | Black | Med.         | 292 | 303    |                   |       |         |
| Lime        | Gray  | Hard         | 303 | 380    |                   |       |         |
| Shale       | Grey  | Med.         | 380 | 395    |                   |       |         |
| Lime        | "     | Hard         | 395 | 430    |                   |       |         |
| Red Rock    | Red   | Soft         | 430 | 470    |                   |       |         |
| Slate       | Grey  | Med.         | 470 | 485    |                   |       |         |
| Lime        | "     | Hard         | 485 | 530    |                   |       |         |
| Red Rock    | Red   | Soft         | 530 | 550    |                   |       |         |
| Lime        | Grey  | Med.         | 550 | 558    |                   |       |         |
| Red Rock    | Red   | Soft         | 558 | 570    |                   |       |         |
| Lime        | Grey  | Hard         | 570 | 580    |                   |       |         |
| Slate       | "     | Med.         | 580 | 606    |                   |       |         |

RECEIVED  
MAY 7 - 1970  
OIL & GAS DIVISION  
DEPT. OF MINES

| Formation   | Color | Hard or Soft | Top / | Bottom | Oil, Gas or Water | Depth Found | Remarks |
|-------------|-------|--------------|-------|--------|-------------------|-------------|---------|
| Lime Shell  | Grey  | Hard         | 606   | 611    |                   |             |         |
| Sand        | "     | "            | 611   | 635    |                   |             |         |
| Red Rock    | Red   | Soft         | 635   | 683    |                   |             |         |
| Lime Shell  | Grey  | Med.         | 683   | 695    |                   |             |         |
| Lime        | "     | Hard         | 695   | 713    |                   |             |         |
| Slate       | Black | Med.         | 713   | 721    |                   |             |         |
| Lime        | Grey  | Hard         | 721   | 764    |                   |             |         |
| Slate & Sh. | "     | Med.         | 764   | 795    |                   |             |         |
| Slate       | Black | "            | 795   | 820    |                   |             |         |
| Sand        | White | Hard         | 820   | 844    |                   |             |         |
| Lime        | Grey  | "            | 844   | 920    |                   |             |         |
| Sand        | "     | "            | 920   | 970    |                   |             |         |
| Lime        | Black | Med.         | 970   | 985    |                   |             |         |
| G. Lime     | Grey  | Hard         | 985   | 1000   |                   |             |         |
| Sand        | White | "            | 1000  | 1030   |                   |             |         |
| Lime        | Grey  | Med.         | 1030  | 1060   |                   |             |         |
| Shale & Sh. | "     | Hard         | 1060  | 1065   |                   |             |         |
| Lime        | "     | Med.         | 1065  | 1083   |                   |             |         |
| Slate Shale | Black | Soft         | 1083  | 1130   |                   |             |         |
| G. Lime     | White | Hard         | 1130  | 1190   |                   |             |         |
| Sand        | Grey  | "            | 1190  | 1200   |                   |             |         |
| B. Lime     | "     | Med.         | 1200  | 1205   |                   |             |         |
| Lime        | Black | Hard         | 1205  | 1217   |                   |             |         |
| Sla-Shell   | "     | Med.         | 1217  | 1250   |                   |             |         |
| Sand        | White | Hard         | 1250  | 1281   |                   |             |         |
| Slate       | Black | Med.         | 1281  | 1330   |                   |             |         |
| Lime        | Grey  | Hard         | 1330  | 1400   |                   |             |         |
| Sand        | "     | "            | 1400  | 1436   |                   |             |         |
| Slate       | "     | Med.         | 1436  | 1550   |                   |             |         |
| Lime        | "     | Hard         | 1550  | 1565   |                   |             |         |
| Slate       | "     | Med.         | 1565  | 1570   |                   |             |         |
| Shale       | "     | "            | 1570  | 1593   |                   |             |         |
| B. Monday   | "     | Hard         | 1593  | 1600   |                   |             |         |
| Lime        | White | "            | 1600  | 1632   |                   |             |         |
| Sand        | "     | Med.         | 1632  | 1643   |                   |             |         |
| Lime        | "     | "            | 1643  | 1745   |                   |             |         |
| Inj. Sand   | "     | Hard         | 1745  | 1764   |                   |             |         |
| Lime        | Grey  | "            | 1764  | 1803   |                   |             |         |
| Sand        | White | "            | 1803  | 1829   |                   |             |         |
| S. & Shell  | "     | "            | 1829  | 1866   |                   |             |         |

Date May 4, 19 70

APPROVED Spencer - Jackson Gas Co., Owner

By Thyge Spencer Partner  
(Title)