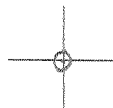


LATITUDE 39° 17' 30"

LONGITUDE 80° 47' 30"



7'5 OGIS topo location

7.5' loc	<u>2.38 S</u>	15' loc	<u>5.26 S</u>
	<u>0.38 W</u>	(calc.)	<u>2.61 W</u>

Company \_\_\_\_\_

Farm \_\_\_\_\_

Elev. 1020' - 7.5' topo - Klu 3/5/93  
+ 15' SE

Quad WEST UNION 7 1/2'

County DOODRIDGE

District WEST UNION

### WELL LOCATION MAP

File No. 017-1941

HOPE NATURAL GAS CO.

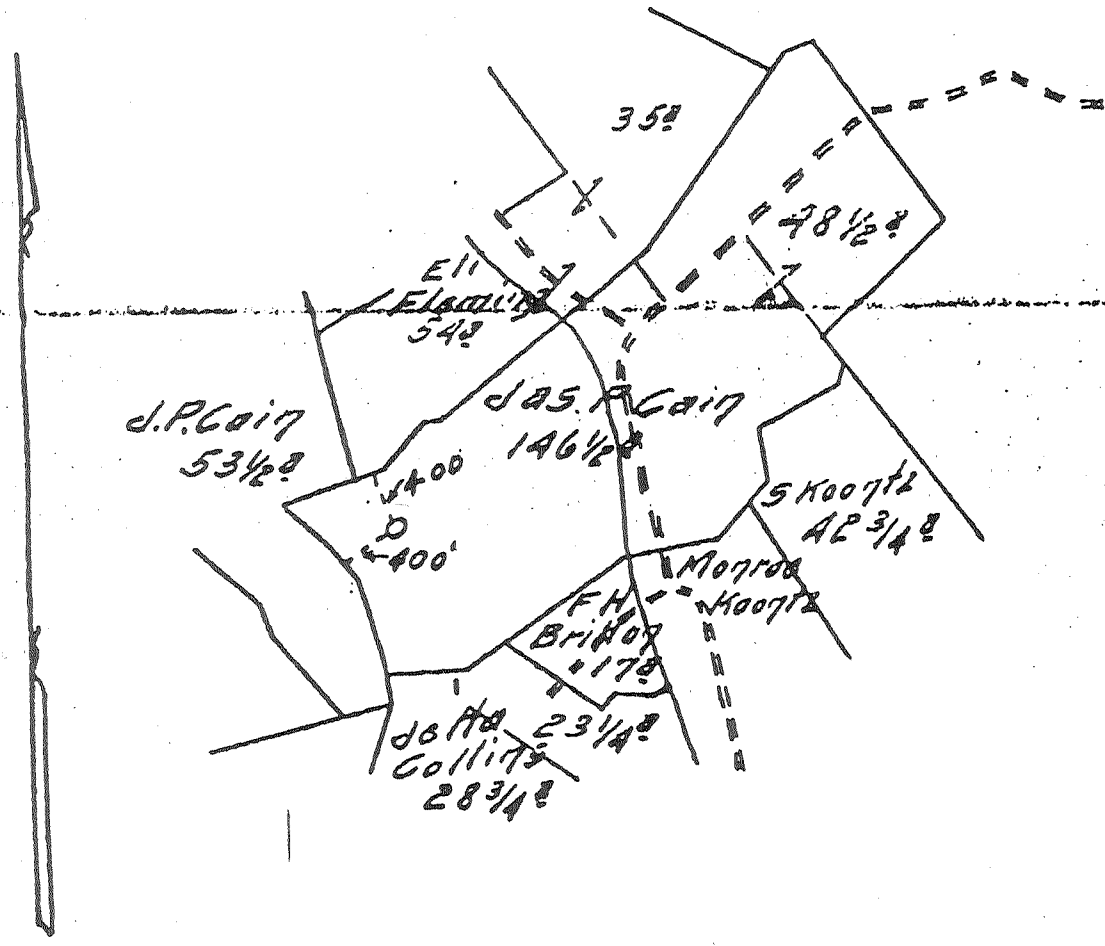
LOCATION FOR WELL No. 3233 N.

James G. Shirley DISTRICT  
James G. Shirley Family Traders of Republic Arnold Co  
West Virginia District Doak Lodge County, West Virginia

Lease No. 13767 Acres 2.00 N. S. 13 E. W. 11  
Scale, one inch equals 80 Feet Sent to Clarksburg Office Oct 3 1913

Location to be 200 feet from J. Cain farm and  
9-27-13

W



017-1941

TITLE: Two hundred feet around the  
RESERVE: buildings  
SPECIAL INSTRUCTIONS: COMPLETE WELL ON OR BEFORE June 6 1914

Location made 10-8-13 by J.D. Long As per plat, except as noted. On field map  
10-9-13 Returned to Pittsburgh 10-9-13

Location changed on account of  
Authorized by: Date: Signed:

# Hope Natural Gas Company REPAIR RECORD

Salem District

Well No. 3233  
 Farm Name James P. Gaines  
 Date First Work Done Nov. 1-46 ✓  
 Commenced: Nov 22  
 Cleaning Out Dec 1 1946 ✓  
 Drilling Deeper.....  
 Abandoning.....

Nature of Work.....  
 Completed: Jan. 6, 1947 ✓  
 Cleaning Out.....  
 Drilling Deeper.....  
 Abandoning.....

### CASING AND TUBING RECORD

Size	Before Repairs		Pulled		Put in Well		After Repairs		Size
	Tally	Steel Line	Tally	Steel Line	Tally	Steel Line	Tally	Steel Line	
10"	466 ✓		None ✓		None ✓		466 ✓		10"
8 1/2"	1268 ✓		None ✓		None ✓		1268 ✓		8 1/2"
6 5/8"	2008 ✓		None ✓		None ✓		2008 ✓		6 5/8"
3" Tub.	None ✓		None ✓		2174 ✓		2174 ✓		3"
2"	2128 ✓		None ✓		None ✓		None ✓		2"

Date	Quarts	Top of Shell	Bottom of Shell	Diameter	Sand	TEST BEFORE SHOT			TEST AFTER SHOT			Test Taken After Shot No. Hours	By Whom Shot
						Reading	Liquid	Opening	Reading	Liquid	Opening		
12-10-46	30	2090	2110	3	Injun	18/10	W	3/4	44/10	W	3/4	FM	Marietta Tor
						17.972			28.077				Co.

RECORD OF ANY DEEPER DRILLING					
Formation	Top	Bottom	Oil at	Gas at	
Commenced drilling at depth of					
Deepened while cleaning out from	2109'	to	8145'		
Total Depth	2145		36		

PACKER RECORD		
Size	Kind	Set (Steel)
6 5/8 x 3	Anchor	214
Deepened from Salem 20 April 8, 1948 by J. P. Payne		
6 5/8 x 2	Anchor	
OIL PRODUCTION		
Estimated	=	bb. per day
CLARKSBURG OFFICE ENTRIES		
Repair Card		1/31/4
Wall Card		4
Memo Book		
Wall Map		
Map Sheets		

### VOLUME AND PRESSURE REPORT BEFORE CLEANING OUT (Take Test When Ready to Clean Out)

Date of Test	Flow Meter or Open Flow	Reading	PITOT TUBE		CUBIC FEET	Sands Gas From
			Liquid Used	Opening		
Nov-20-46	FM	18/20	Water	3/4"	17.972	Injun

### AFTER CLEANING OUT

Date of Test	Flow Meter or Open Flow	Reading	PITOT TUBE		CUBIC FEET	Sands Gas From
			Liquid Used	Opening		
1-6-1947	FM	44/10	Water	3/4"	28.077	Injun

### AFTER DRILLING DEEPER

Date of Test	Flow Meter or Open Flow	Reading	PITOT TUBE		CUBIC FEET	Sands Gas From
			Liquid Used	Opening		
			Deepened only while cleaning out			

### PRESSURE TEST

Date of Test	Opening	1 Min.	2 Min.	3 Min.	4 Min.	5 Min.	6 Min.	7 Min.	8 Min.	9 Min.	10 Min.	30 Min.	60 Min.
1-6-1947	3" Tubing	1	2	4	6	7	8	9	10	11	12	24	30

Remarks:

ORIGINAL—For Land Dept. Only

017-1941

*J. S. Payne*  
District Sup.