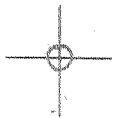


LATITUDE 39° 22' 30"

00° 56' 08" LONGITUDE



7.5 OGIS topo location

7.5' loc, 2.16 S
2.19 W

15' loc 5.04 S
(calc.) 2.19 W

Company _____

Farm _____

Elev. 1100' - 7.5' topo - k/a 3/5/93
Centerpoint C

Quad SALEM 7 1/2'

County DORRIDGE

District McCLELLAN

WELL LOCATION MAP

File No. 017-1993

HOPE NATURAL GAS COMPANY

LOCATION FOR WELL No. 7A58

c. 7

Instructions A

Salem DISTRICT

On A.P. Richards Farm on waters of _____

McClellan District: Doddridge County, West Virginia

Lease No. 45013 Acres 25 N. _____ S. 8 E. _____ W. 1

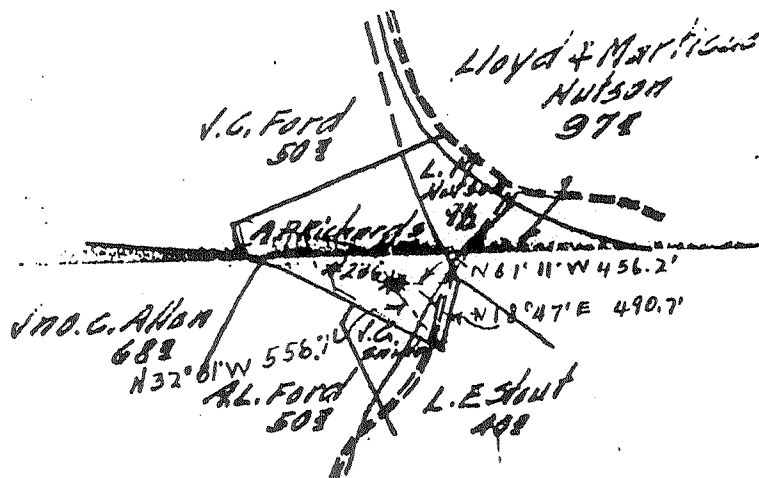
Scale one inch equals 80 p. Location made in Pittsburgh Sent to Clarksburg

Location to be Purchased

Pittsburgh Copy

54

Well Book _____
 Lease Book _____
 Wall Map APR 29 30 J.C.H.
 Line Map MAY 19 A. J. U.
 Sheets MAY 14 1930 H.H.S.



Field Book 493 Page 1 and Book 491 Page 40

Elevation 1014.6'

1014.6'

017-1993

TITLE _____ RESERVE _____

SPECIAL INSTRUCTIONS: COMPLETE WELL ON OR BEFORE _____

Same Lease on which _____ Located Well No. _____

Purchased from G.L. Cabot Inc. Dec 1, 1927. That Co's #236 Farm No. 1

Location made April 17, 1970 by Geo. H. Cunningham As per plat, except as noted. On field map

April 21, 1970 Returned to Pittsburgh April 21, 1970

Location changed on account of _____

Authorized by _____ Date _____ Signed S. H. Bradley OCF

WESTERN OIL COMPANY

WORD of Well No. 1 7458 on A. P. Richards Hrs. 27 Acres Big Battle
 Field McClellan Township Doddridge County W. Va.
 Rig Commenced June 25th 1910 Completed July 1st 1910
 Drilling Commenced July 1st 1910 Completed Aug. 19th 1910
 Cost per foot 90 Contractor P. H. Gaffney Address Sistersville
 Drillers' Names Oscar Henry, John Johnson, Hugh Dailey, Albert Hulings

BOILER			ENGINE			RIG			
H. P.	No.	Name of Maker	H. P.	No.	Name of Maker	New	Old	Height	Name of Builder
		F & T			Warren	Yes		84	J. W. Jenny

CONDUCTOR AND CASING USED IN DRILLING.

Conductor	13 Inch	10 Inch	8 1/2 Inch	8 Inch	7 1/2 Inch	6 1/2 Inch	6 Inch	5 1/2 Inch	5 1/4 Inch	4 1/2 Inch
14'		305'	1114-4			1885-8				

CONDUCTOR AND CASING LEFT IN WELL.

Conductor	13 Inch	10 Inch	8 1/2 Inch	8 Inch	7 1/2 Inch	6 1/2 Inch	6 Inch	5 1/2 Inch	5 1/4 Inch	4 1/2 Inch
14'						1885-8				

OIL WELL

GAS WELL

When Shot	Size of Torpedo	1st day's Production	Tubing	Rods	Size of Packer	Depth Set	Tubing	1st Minute Pressure	Back Pressure
					6-1/2x3"	1904	1948	235	465

Formation	Top	Bottom	Thickness	Remarks
Bluff Sand	260	295	35	
Pitts. Coal	584	592	8	
Hurry Up Sand	615	645	30	
Little Dunkard	930	965	25	
Big Dunkard	1095	1105	10	
1st Salt Sand	1275	1305	30	
2nd Salt Sand	1365	1390	25	
3rd Salt Sand	1545	1600	55	
Maxon Sand	1750	1790	40	
Little Lime	1815	1840	25	
Pencil Cave	1840	1845	5	
Big Lime	1845	1905	60	
Keener Sand	1905	1914	9	Line Measurement
Slate	1914	1916	2	" "
Injun Sand	1916			1st Gas (about 1,000,000 cu.ft.)
More Gas to	1921			
Total Depth	1936			Line Measurement

No water encountered anywhere in the hole.

017-1993

Richards
over 236

Examined and approved by J. Q. Duff Foreman

NOTE.—The above blank must be filled out carefully by the Contractor with a complete and accurate record of the Well, and accompany when presented for payment, the bill for drilling. All formations and known sands must be given their proper name, and under head of "Remarks" must be reported in what sand and at what depth Oil, Gas, or Water was found, the quantity of same, the quality of the sand, and thickness of pay. Make no memoranda of Boiler and Engine if owned by the Driller.