

1702012P

WW-7
8-30-06



West Virginia Department of Environmental Protection
Office of Oil and Gas
WELL LOCATION FORM: GPS

API: 47-017-02012 WELL NO.: WV 655771 (George Ahouse #1339)

FARM NAME: George Ahouse

RESPONSIBLE PARTY NAME: EQT Production Company

COUNTY: Doddridge DISTRICT: New Milton

QUADRANGLE: Smithburg 7.5'

SURFACE OWNER: Michael D. Travis

ROYALTY OWNER: Michael D. Travis, et al.

UTM GPS NORTHING: 4344961

UTM GPS EASTING: 526480 GPS ELEVATION: 272 m (894 ft)

The Responsible Party named above has chosen to submit GPS coordinates in lieu of preparing a new well location plat for a plugging permit or assigned API number on the above well. The Office of Oil and Gas will not accept GPS coordinates that do not meet the following requirements:

- Datum: NAD 1983, Zone: 17 North, Coordinate Units: meters, Altitude: height above mean sea level (MSL) – meters.
- Accuracy to Datum – 3.05 meters
- Data Collection Method:
Survey grade GPS : Post Processed Differential
Real-Time Differential
Mapping Grade GPS X: Post Processed Differential X
Real-Time Differential

4. **Letter size copy of the topography map showing the well location.**
I the undersigned, hereby certify this data is correct to the best of my knowledge and belief and shows all the information required by law and the regulations issued and prescribed by the Office of Oil and Gas.

RECEIVED
Office of Oil and Gas
FEB 17 2015

WV Department of Environmental Protection

Signature

PS # 2100
Title

1/30/15
Date

Topo Quad: Smithburg 7.5'

Scale: 1" = 2000'

County: Doddridge

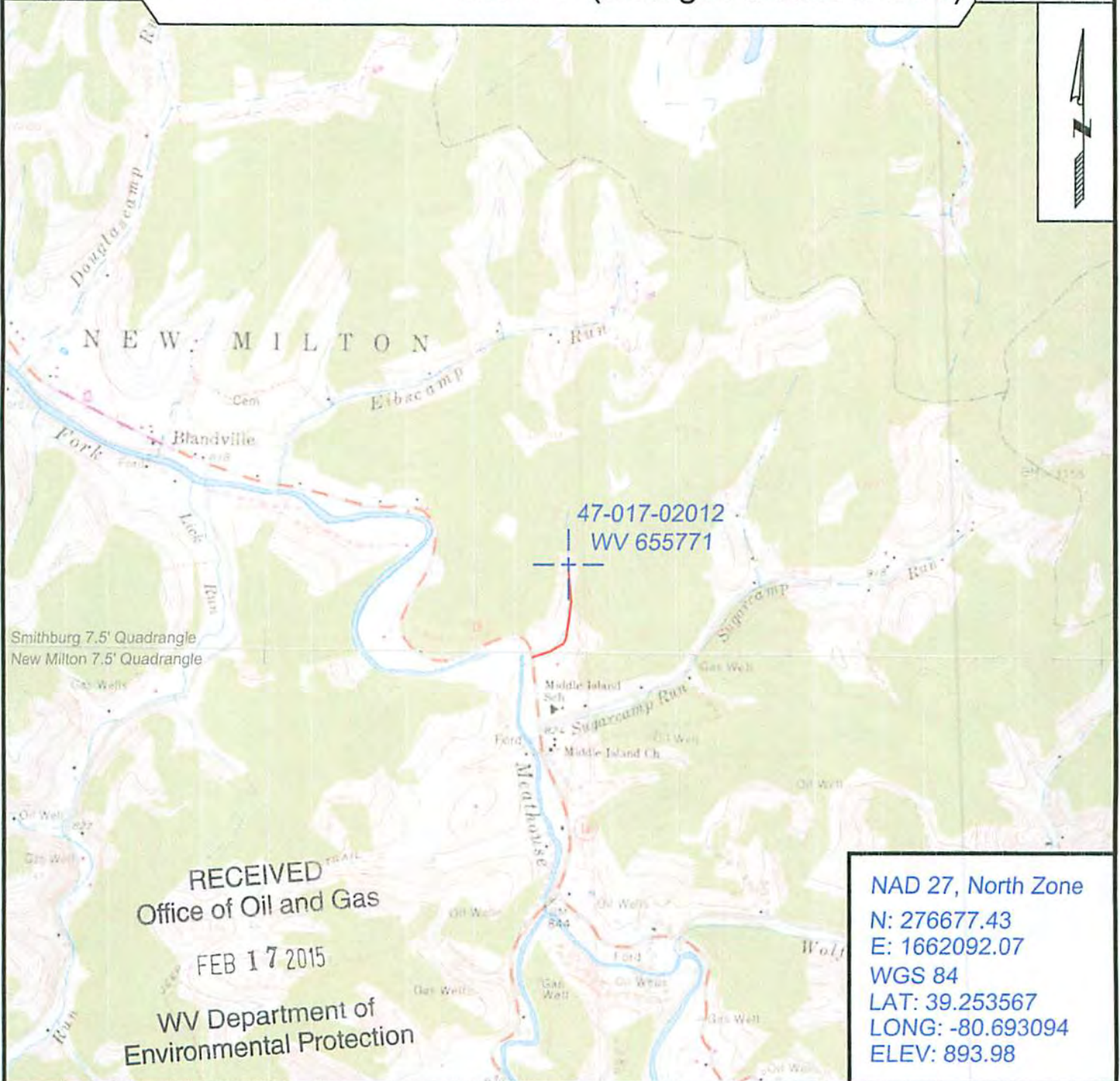
Date: January 30, 2015

District: New Milton

Project No: 67-30-00-08

47-017-02012 WV 655771 (George Ahouse #1339)

Topo



Smithburg 7.5' Quadrangle
New Milton 7.5' Quadrangle

RECEIVED
Office of Oil and Gas
FEB 17 2015
WV Department of
Environmental Protection

NAD 27, North Zone
N: 276677.43
E: 1662092.07
WGS 84
LAT: 39.253567
LONG: -80.693094
ELEV: 893.98



SURVEYING AND MAPPING SERVICES PERFORMED BY:

ALLEGHENY SURVEYS, INC.

1-800-482-8606
237 Birch River Road
Birch River, WV 26610
PH: (304) 649-8608
FAX: (304) 649-8608

PREPARED FOR:

EQT Production Company

P.O. Box 280
Bridgeport, WV 26330