

LATITUDE 39° 22' 30"

90° 35' 00"

LONGITUDE



7'5 OGIS topo location

7.5' loc, 0.86S  
0.97W

15' loc 3.74S  
(calc.) 0.97W

Company \_\_\_\_\_

Farm \_\_\_\_\_

Elevation topo est 940'  
Centerpoint C

Quad SALEM 7 1/2'

County DODDRIDGE

District MCCLELLAN

WELL LOCATION MAP

File No. 017-2164

The Manufacturers Light & Heat

LOCATION FOR WELL No. 2466 Gas

Lease No. 7343 for 85 Acres, Sedalia District

DESCRIPTION

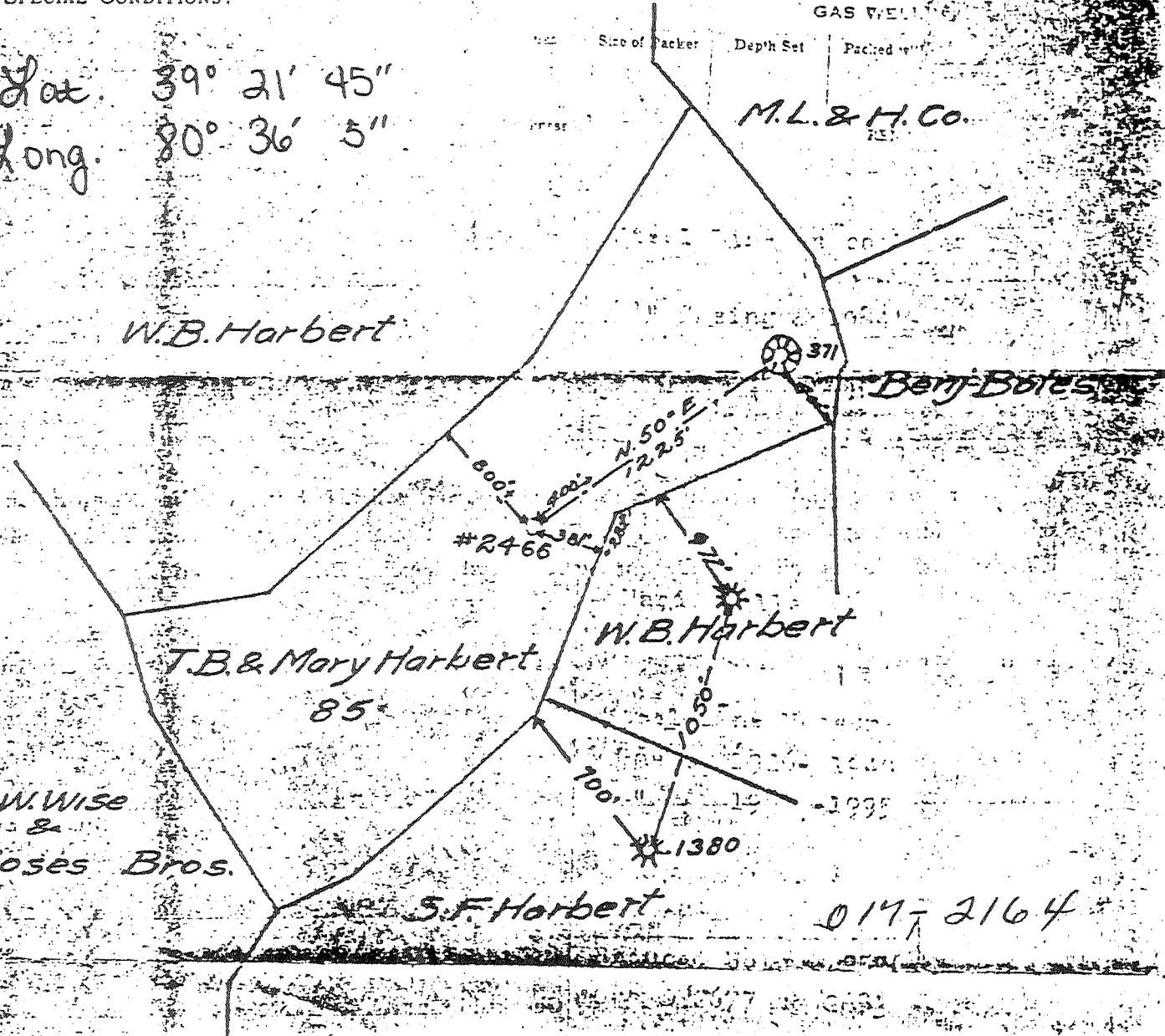
Well No. 1 on farm of T.B. and Mary Harbert  
McClelland Dist. Twp. Doddridge County W. Va.  
381 feet from West line of W.B. Harbert Farm  
800± feet from east line of W.B. Harbert Farm  
900± feet from house line of T.B. & Mary Harbert Farm  
1225± feet N. 50° E of well on " Farm

As shown on Sketch below. Scale of sketch 1" equals 660 feet

Location made June 27 1919 Signed F.F. Murdock Engr.  
 Reservation around Buildings 200 Feet. Harry Moore Foreman

SPECIAL CONDITIONS:-

Lat. 39° 21' 45"  
 Long. 80° 36' 5"



Harry Moore Dis't. Supt. Pittsburgh, Pa., July 11 1919  
Sedalia W. Va.

You are hereby authorized to commence work on above well at once, as well must be commenced by at once 1919, and must be completed by soon as possible 1919.

All charges for labor and material incident to above well must be charged to this Well No. 2466, and when work is completed report must be filled out on reverse side of this sheet and forwarded to Pittsburgh Office. Retain one copy of this order for your files.

APPROVED  
John Foley  
 JOHN FOLEY

H.A. Quay

Division Bedalia W. Va.

246 Fourth Ave., Pittsburgh, Pa.

Company

017-2164

Record of Well No. 2466

on T.B. & Mary Herbert

Farm 85

Acres

Bedalia W. Va. Field McClellan

District Doddridge County W. Va.

State

Rig Commenced August 25

1919

Completed August 29

1919

Drilling Commenced Sept 16

1919

Completed October 30

1919

Cost per foot \$2.15

Contractor Salem Drilling Co.

Address Salem W. Va.

Drillers' Names Bert Metz, Mont Metz, & Ed Sigley.

BOILER			ENGINE			RIG			
H.P.	No.	Name of Maker	H.P.	No.	Name of Maker	New	Old	Height	Name of Builder

CONDUCTOR AND CASING USED IN DRILLING										
Diameter	13 inch	10 inch	8 1/2 inch	6 1/2 inch	6 inch	5 1/2 inch	5 ft inch	5 inch	4 inch	
14		204'-4"	1101'-2"	1850'-8"						

CONDUCTOR AND CASING LEFT IN WELL										
Diameter	13 inch	10 inch	8 1/2 inch	6 1/2 inch	6 inch	5 1/2 inch	5 ft inch	5 inch	4 inch	3 inch
			1101'-2"	1850'-8"						

OIL WELL											GAS WELL			
When Shot	Size of Torpedo	1st Day's Production	Tubing	Rods	Tanks	Size of Packer	Depth Set	Packed with	1st Minutes Pressure	Rock Pressure				

FORMATION	FORMATION			REMARKS
	Top	Bottom	Thickness	
Native Coal <i>black soft</i>	280	283	3	Steel Line on casl. 8 1/2" Casing @ 1084'-4"  Hard Shells  Steel Line Measurement on Big Lime Gas @ 1926-1940 " 1987-1995
Pittsburgh Coal	551	560	9	
Little Dunkard <i>white hard</i>	960	990	30	
Big Dunkard <i>white hard</i>	1082	1126	44	
Gas Sand <i>white hard</i>	1164	1188	24	
2nd Gas sand <i>white hard</i>	1200	1258	58	
Salt Sand <i>white hard</i>	1429	1485	56	
Maxon <i>white hard</i>	1595	1654	59	
Red Rock <i>red soft</i>	1682	1700	18	
Sand <i>white hard</i>	1700	2772	72	
Red Rock <i>red</i>	1772	1787	15	Reduced Hole @ 2576 Gas @ 2677 to 2683
Little Lime <i>black hard</i>	1787	1801	14	
Pencil Case <i>gray soft</i>	1801	1824	23	
Big Lime <i>black hard</i>	1824	1888	64	
Big Injun <i>white hard</i>	1888	1995	107	
Squaw Sand <i>white hard</i>	2026	2060	34	
Berea Grit <i>white hard</i>	2170	2275	105	
Fifty Foot <i>white hard</i>	2388	2410	22	
Thirty Foot <i>white hard</i>	2523	2539	16	
Gods Stray <i>white hard</i>	2576	2615	39	
Fourth Sand <i>white hard</i>	2673	2683	20	
Total Depth		2770.		

APPROVED  
TOMAS J. SIGLEY  
Salem Drilling Co.

U.R. H. Sigley  
017-2164

Examined above information and measurements and found to be correct by Salem Drilling Co. Contractor. Examined and approved by \_\_\_\_\_ Superintendent of Co.  
NOTE: The above blank must be filled out carefully by the Contractor, with a complete and accurate record of the Well, and accompany, when presented for payment the bill for drilling.  
All formations and known sands must be given by their proper names, with steel line measurements, and under the head of "Remarks" must be recorded in what sand and at what depth Oil, Gas or Water was found, the quantity of same, the quality of the sand, and thickness of pay.  
Make no memoranda of boiler and engine if owned by contractor.