

Minimum Error of Closure 1' IN 200'
 Source of Elevation ROAD FORKS HEAD OF ROBINSON RUN
ELEVATION - 997'

"I, the undersigned, hereby certify that this map is correct to the best of my knowledge and belief and shows all the information required by paragraph 6 of the rules and regulations of the oil and gas section of the mining laws of West Virginia."

- New Location
- Drill Deeper
- Abandonment

MAP SHT. 54; S9-E1, F.B. 491 P 40

Company	CONSOLIDATED GAS SUPPLY CORP
Address	CLARKSBURG, WEST VIRGINIA
Farm	N.W. UNDERWOOD
Tract	Acres 46 Lease No. 45008
Well (Farm) No.	Serial No. 7459
Elevation (Spirit Level)	1021'
Quadrangle	SALEM 7 1/2' Centerpoint 15
County	DODDRIDGE District McCLELLAN
Engineer	<i>Daniel M Radcliffe</i>
Engineer's Registration No.	1.1.5. 74
File No.	Drawing No.
Date	MAY 1, 1980 Scale 1" = 500'

STATE OF WEST VIRGINIA
 DEPARTMENT OF MINES
 OIL AND GAS DIVISION
 CHARLESTON

WELL LOCATION MAP

FILE NO. 017-2417-P
was 47-F

+ Denotes location of well on United States Topographic Maps, scale 1 to 24,000, latitude and longitude lines being represented by border lines as shown.

— Denotes one inch spaces on border line of original tracing.

2,750'

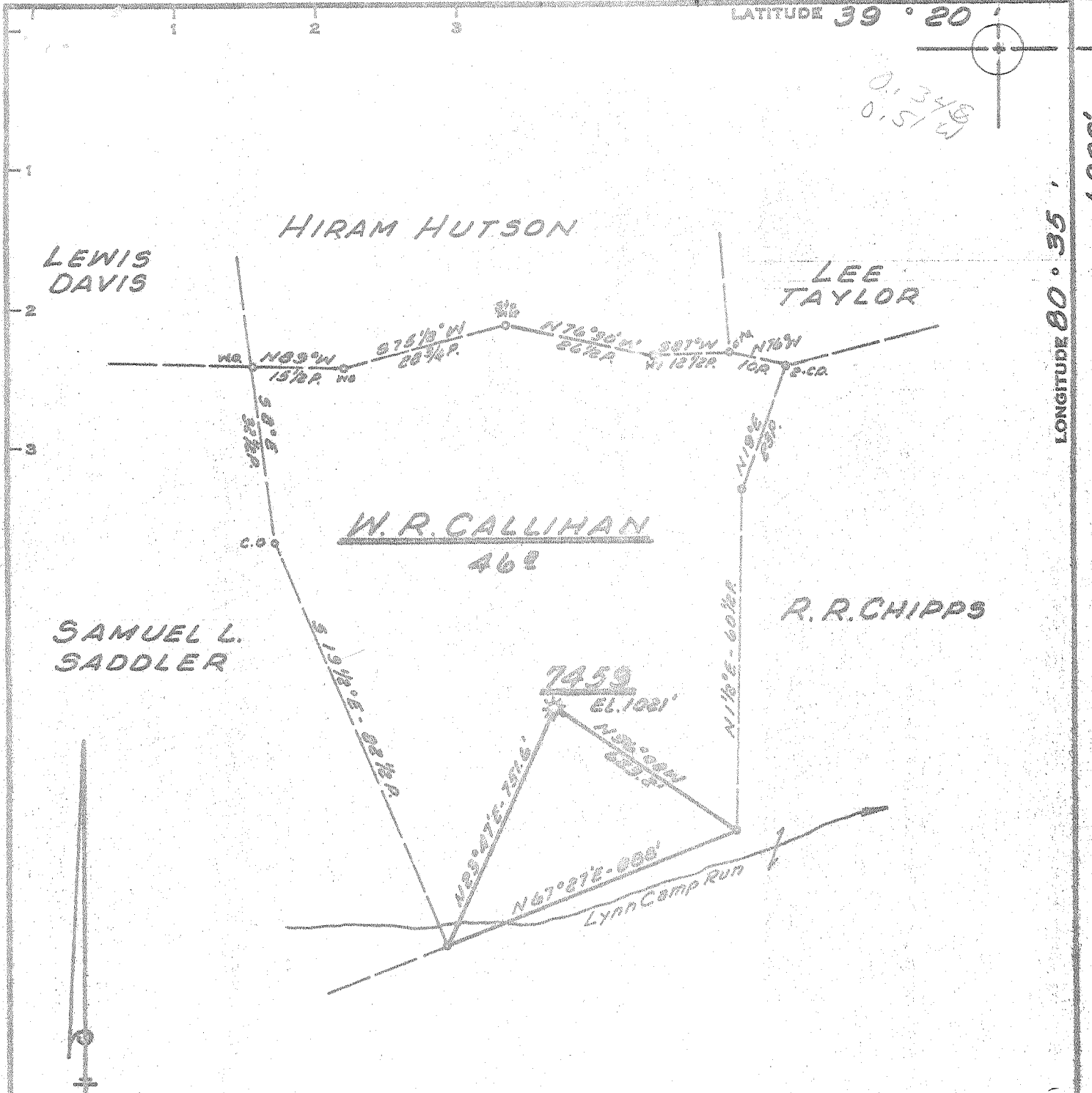
2,271'-TOP

LATITUDE 39° 20'

0.348
0.574

LONGITUDE 80° 35'

1,900'



Minimum Error of Closure 1' IN 200'
 Source of Elevation ROAD FORKS HEAD OF ROBINSON RUN - ELEVATION - 997'
 "I, the undersigned, hereby certify that this map is correct to the best of my knowledge and belief and shows all the information required by paragraph 6 of the rules and regulations of the oil and gas section of the mining laws of West Virginia."

- FRACTURE
- New Location
- Drill Deeper
- Abandonment

MAP SHT. 54; 39-E1, F.B. 491 P. 40

Company CONSOLIDATED GAS SUPPLY CORP.
 Address CLARKSBURG, WEST VA.
 Farm W. R. CALLIHAN
 Tract _____ Acres 46 Lease No. 45008
 Well (Farm) No. _____ Serial No. 7459
 Elevation (Spirit Level) 1021'
 Quadrangle CENTERPOINT SC
 County DODDRIDGE District MCCLELLAN
 Engineer Jackson M. Jarvis
 Engineer's Registration No. 2397
 File No. _____ Drawing No. _____
 Date APRIL 6, 1971 Scale 1" = 400'

STATE OF WEST VIRGINIA
 DEPARTMENT OF MINES
 OIL AND GAS DIVISION
 CHARLESTON

WELL LOCATION MAP
 FILE NO. DSD-47-Frac.
NOW 2417

+ Denotes location of well on United States Topographic Maps, scale 1 to 62,500, latitude and longitude lines being represented by border lines as shown.
 — Denotes one inch spaces on border line of original tracing.

RECEIVED

FEB 21 1972

OIL & GAS DIVISION
DEPT. OF MINES

Well	<u>7459</u>
Permit	<u>DOD-17-FRAC (Now 2417)</u>
Farm	<u>W. R. Callihan</u>
District	<u>McClellan</u>
County	<u>Doddridge</u>

Mr. Robert L. Dodd, Deputy Director
 State of West Virginia
 Department of Mines
 Oil and Gas Division
 Charleston, West Virginia 25301

Dear Sir:

The following information on the completion of the above mentioned well should be added to the completion report (Form OG-10) already on file in your office:

Cemented lower hole solid from 2859' to 2157' *Fish*
 and ran 2153' feet of 4 1/2" casing. Perforated from
2101' to 2111' with 20 holes and fractured
Injun - 10-11-71 with 25,000# sand, 452 bbl water, 500 gal 5% acid
1100 gal 28% acid and 2500 MHHP

The final open flow was 53,200 mcf cubic feet and the rock pressure was 160 pounds in 7 days/~~hours~~

Very truly yours,
R. E. Bayne
 R. E. Bayne,
 Manager of Production

MAR 6 1972