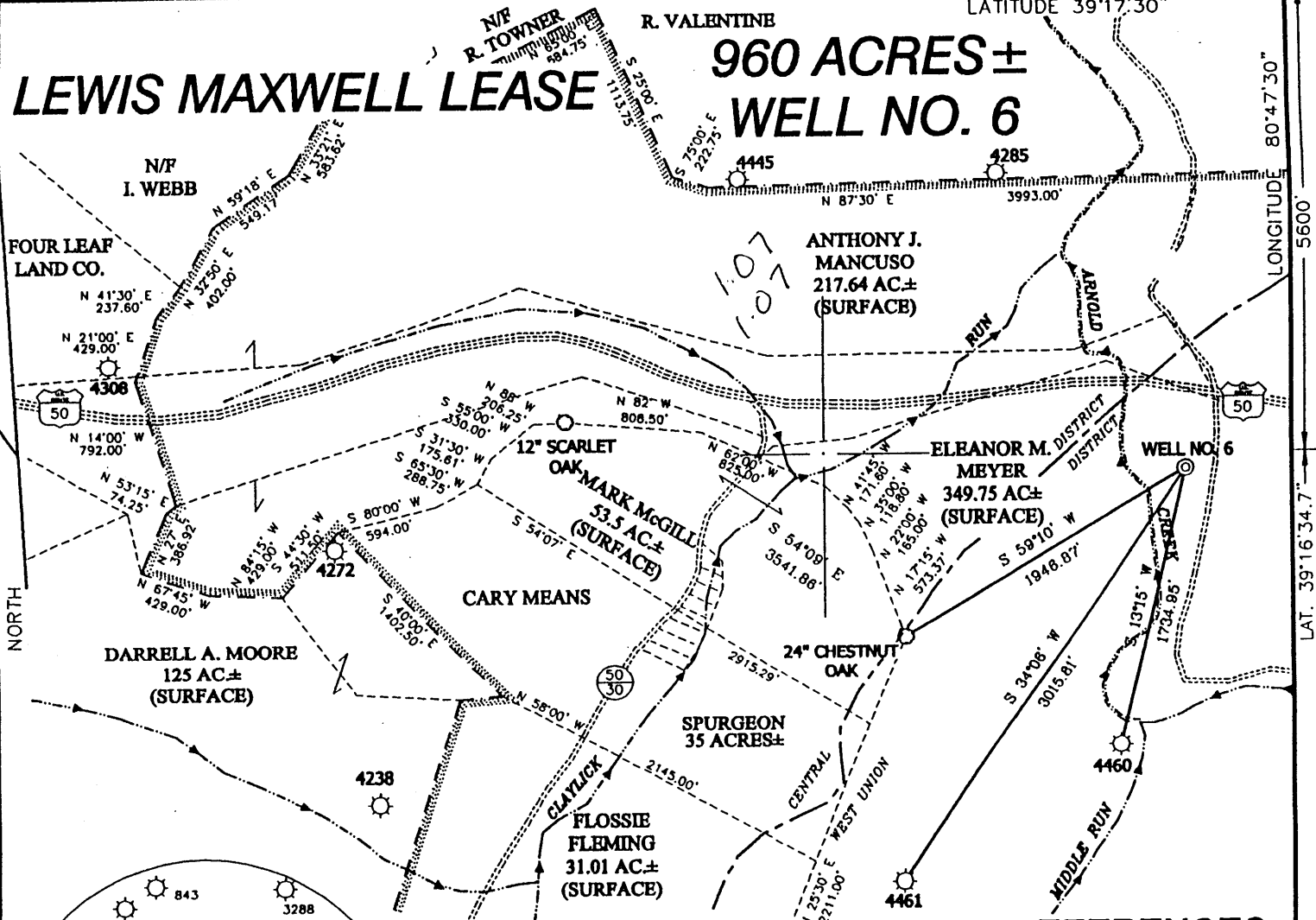


# LEWIS MAXWELL LEASE

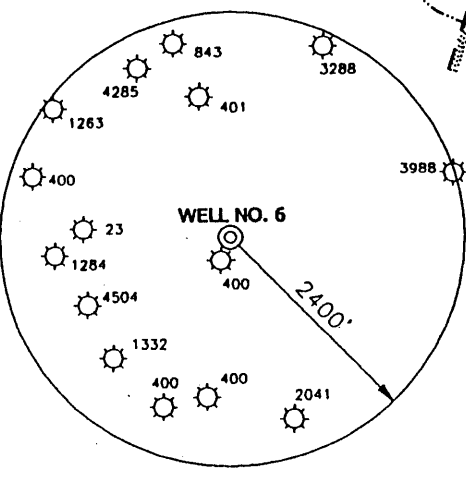
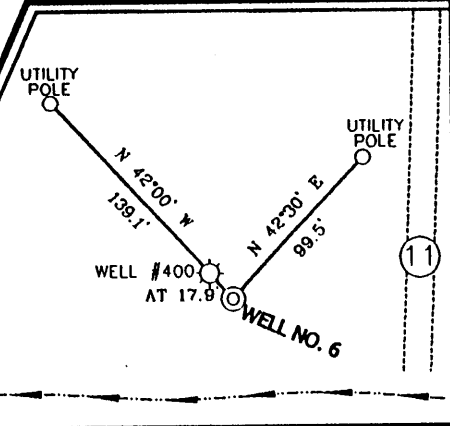
# 960 ACRES ± WELL NO. 6



### NOTES ON SURVEY

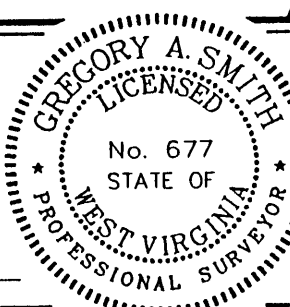
1. TIES TO WELLS AND CORNERS ARE BASED ON STATE PLANE GRID NORTH WV NORTH ZONE NAD '27.
2. TIES TO REFERENCES ARE BASED ON MAGNETIC NORTH 10/20/00.
3. LEASE BOUNDARY SHOWN HEREON TAKEN FROM DEED BOOK 112 ON PAGE 91 AND FROM A WELL PLAT FOR WELL 47-017-0400 AS PREPARED BY J.D. JEFFRIES DATED 05-19-60.
4. SURFACE OWNER AND ADJOINER INFORMATION TAKEN FROM THE ASSESSOR AND COUNTY CLERK RECORDS OF DODDRIDGE COUNTY IN OCTOBER, 2000.
5. WELL LAT./LONG. ESTABLISHED BY DGPS (SUBMETER MAPPING GRADE).

### REFERENCES



I THE UNDERSIGNED, HEREBY CERTIFY THAT THIS PLAT IS CORRECT TO THE BEST OF MY KNOWLEDGE AND BELIEF AND SHOWS ALL THE INFORMATION REQUIRED BY LAW AND THE REGULATIONS ISSUED AND PRESCRIBED BY THE DEPARTMENT OF ENERGY.

P.S. 677 Gregory A. Smith



(+) DENOTES LOCATION OF WELL ON UNITED STATES TOPOGRAPHIC MAPS.  
 DATE OCTOBER 27, 2000  
 OPERATORS WELL NO. LEWIS MAXWELL #6  
 API WELL NO. 47-017-04564  
 STATE COUNTY PERMIT

MINIMUM DEGREE OF ACCURACY 1 / 200 FILE NO. 4185P6 (92-39)  
 PROVEN SOURCE OF ELEVATION JUNCTION OF ROADS ELEVATION 816' SCALE 1" = 1000'

STATE OF WEST VIRGINIA  
 DIVISION OF ENVIRONMENTAL PROTECTION  
 OFFICE OF OIL AND GAS

WELL TYPE : OIL  GAS  LIQUID INJECTION  WASTE DISPOSAL  IF "GAS" PRODUCTION  STORAGE  DEEP  SHALLOW   
 LOCATION :  
 ELEVATION 811' WATERSHED ARNOLD CREEK  
 DISTRICT CENTRAL COUNTY DODDRIDGE QUADRANGLE WEST UNION 7.5'  
 SURFACE OWNER ELEANOR M. MEYER ACREAGE 349.75 ±  
 ROYALTY OWNER LEWIS MAXWELL HEIRS et al LEASE ACREAGE 55 OF 960 ±  
 PROPOSED WORK :  
 DRILL  CONVERT  DRILL DEEPER  REDRILL  FRACTURE OR STIMULATE  PLUG OFF OLD FORMATION  PERFORATE NEW FORMATION  PLUG AND ABANDON  CLEAN OUT AND REPLUG  OTHER   
 PHYSICAL CHANGE IN WELL (SPECIFY) \_\_\_\_\_ TARGET FORMATION ALEXANDER  
 ESTIMATED DEPTH 5600'

WELL OPERATOR KEY OIL COMPANY DESIGNATED AGENT JAN CHAPMAN  
 ADDRESS 22 GARTON PLAZA WESTON, WV 26452 ADDRESS 22 GARTON PLAZA WESTON, WV 26452

COUNTY NAME Dodd  
 PERMIT 4564

State of West Virginia  
Division of Environmental Protection  
Section of Oil and Gas

*M213*

Well Operators Report of Well Work

Farm name: Meyer Operator Well #: Lewis Maxwell #6

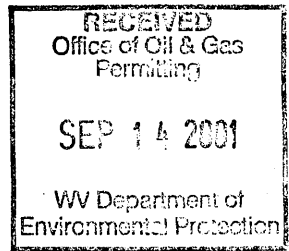
Location: Elevation: 811' Quadrangle: West Union 7.5'

District: Central County Doddridge  
Latitude 5600 feet south of 39 Deg. 17 Min. 30 Sec.  
Longitude 5620 feet west of 80 Deg. 47 Min. 30 Sec.

Company: Key Oil Company  
22 Garton Plaza  
Weston, WV 26452

Agent:	Jan Chapman	Casing	Used in Drilling	Left in Well	Cement Fill up
--------	-------------	--------	---------------------	-----------------	-------------------

Inspector:	Mike Underwood				
Permit Issued:	02-14-01	11 3/4	148	132	50sk
Well Work Commenced:	05-23-01				
Well Work Completed:	05-28-01	8 5/8	890	841	185 sks
Verbal Plugging					
Permission granted on:		4 1/2	5338	5168	485 sks
Rotary ___ Cable ___ Rig					
Total Depth (ft)	5338'				
Fresh water depth (ft)	459'				
Salt water depth (ft)	1670				
Is coal being mined in are (Y/N)	N				
Coal depths (ft)	N/A				



OPEN FLOW DATA

Producing formation	Alexander	Pay zone depths (ft)	5006-5054
Gas: Initial open flow	show mcf/d	Oil: Initial open flow	bbls/day
Final open flow	1609	Final open flow	bbls/day
Time of open flow between initial and final tests			48 Hours
Static rock pressure	1800 psig (surface pressure)after		48 Hours

Other producing formation	Benson/Warren	Pay zone depths (ft)	3108-4742
Gas: Initial open flow	* mcf/day	Oil: Initial open flow	bbls/day
Final open flow	* mcf/day	Final open flow	bblss/day
Time of open flow between initial and final tests			48 Hours
Static rock pressure	* psig (surface pressure) after		48 Hours

\* = Commingled zones

For: Key Oil Company  
By: *[Signature]*

Date: 09-01-01

SEP 21 2001

0000 4564

API # 47-017-04564  
Maxwell #6

Stage #1 Alexander	perfs 5006-5054	sand 600 sks	60 quality foam
Stage #2 Benson/Riley	4661-4742	400 sks	60 quality foam
Stage #3 Riley	3910-4316	500 sks	60 quality foam
Stage #4 Speechley/Warren	3153-3692	500 sks	60 quality foam

Drillers Log

Electric Log Tops

Sh	0	10	
Sd	10	26	water @ 26 - 1"
RR	26	29	water @ 138 - 1-1/2"
Sd/Sh	29	148	
Sd	148	163	
Sd/Sh	163	586	water @ 459 - 1-1/2"
Sd	586	594	
Sh	594	693	
Sd/Sh	693	1720	water @ 1670 - 1-1/2"
Lime	1725	1737	
Sh	1737	1767	oil odor @ 1760
B Lime	1767	1905	
B Injun	1905	1957	
Sd/Sh	1957	3160	gas odor @ 3103
Warren	3160	3192	
Sd/Sh	3192	3570	
Balltown	3570	3640	
Sd/Sh	3640	4335	
Riley	4335	4365	
Grey	4365	4760	
Benson	4760	4770	
Sd/Sh	4770	5018	
Alexander	5018	5050	
Sd/sh	5050	5338	
TD	5338		