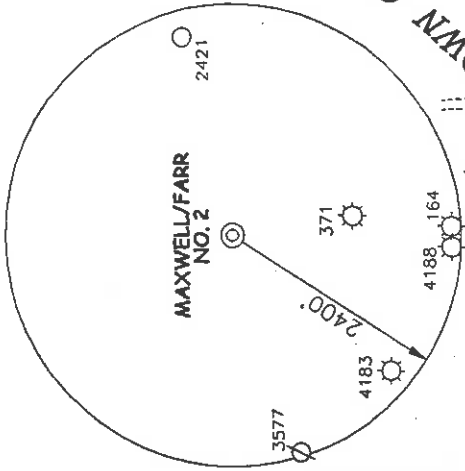


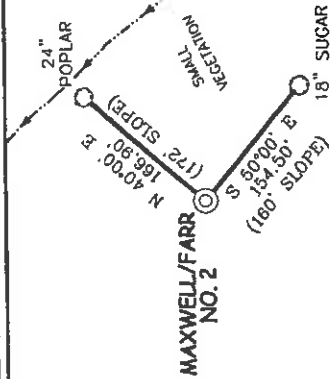
MAXWELL/FARR LEASE 137 ACRES ± MAXWELL/FARR NO. 2



NOTES ON SURVEY

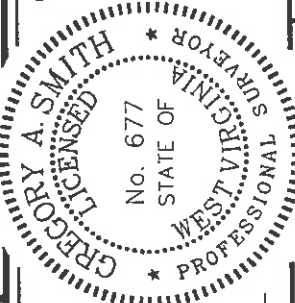
1. TIES TO WELLS AND CORNERS ARE BASED ON STATE PLANE GRID, NORTH WV NORTH ZONE NAD '27.
2. TIES TO REFERENCES ARE BASED ON MAGNETIC NORTH 04/13/01.
3. LEASE BOUNDARY SHOWN HEREON TAKEN FROM DEED BOOK 233 ON PAGE 636.
4. SURFACE OWNER AND ADJOINER INFORMATION TAKEN FROM THE ASSESSOR AND COUNTY CLERK RECORDS OF GOODRIDGE COUNTY IN APRIL, 2001.
5. WELL LAT./LONG. ESTABLISHED BY DGPS(SUBMETER MAPPING GRADE).

REFERENCES



I THE UNDERSIGNED, HEREBY CERTIFY THAT THIS PLAT IS CORRECT TO THE BEST OF MY KNOWLEDGE AND BELIEF AND SHOWS ALL THE INFORMATION REQUIRED BY LAW AND THE REGULATIONS ISSUED AND PRESCRIBED BY THE DEPARTMENT OF ENVIRONMENTAL PROTECTION.

P.S. *Gregory A. Smith*
677



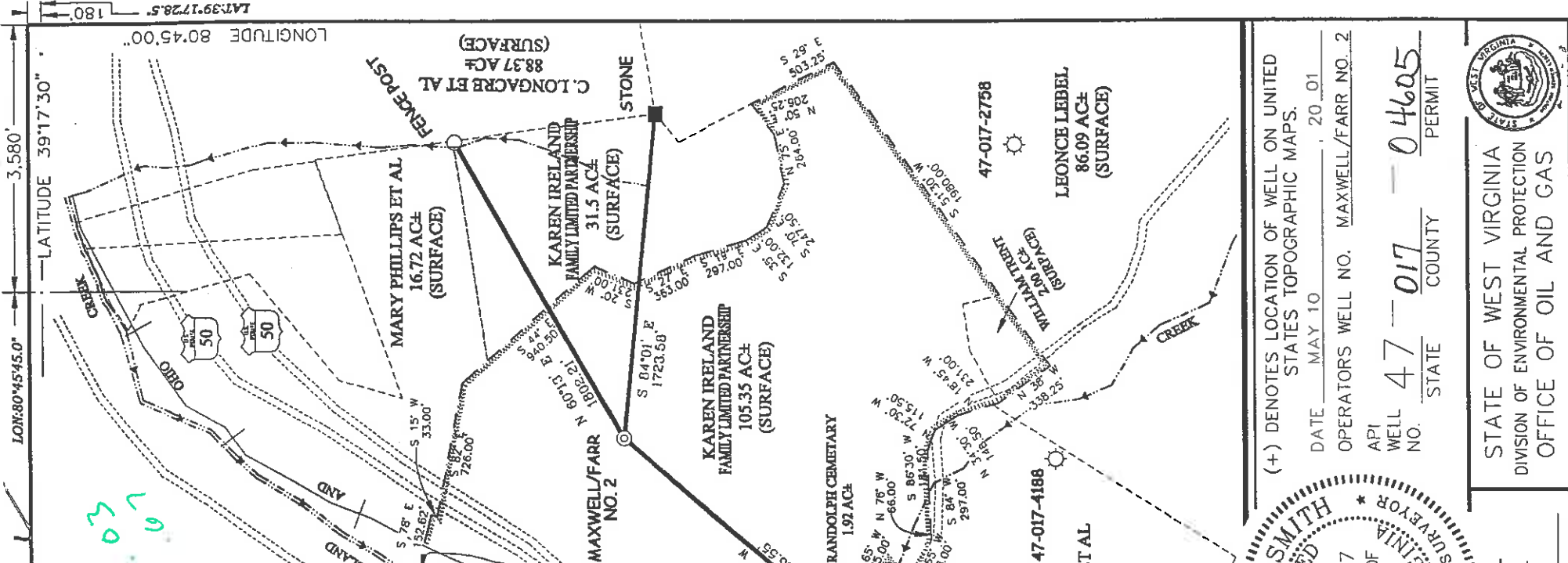
MINIMUM DEGREE OF ACCURACY 1 / 200 FILE NO. 4701P1(105-10)
PROVEN SOURCE SCALE 1"=800'
BENCH MARK ELEVATION 792'

WELL TYPE : OIL GAS INJECTION WASTE DISPOSAL "GAS" PRODUCTION STORAGE DEEP SHALLOW

LOCATION : ELEVATION 1053' WATERSHED MIDDLE ISLAND CREEK
DISTRICT WEST UNION COUNTY DODDRIDGE QUADRANGLE WEST UNION 7.5'
SURFACE OWNER KAREN IRELAND FAMILY LIMITED PARTNERSHIP ACREAGE 105.35±
ROYALTY OWNER ROBERT MAXWELL AND CAROLYN FARR ET AL LEASE ACREAGE 137± LEASE NO. _____

PROPOSED WORK :
DRILL CONVERT DRILL DEEPER REDRILL FRACTURE OR STIMULATE PLUG OFF OLD FORMATION PERFORATE NEW FORMATION PLUG AND ABANDON CLEAN OUT AND REPLUG OTHER _____
PHYSICAL CHANGE IN WELL (SPECIFY) _____ TARGET FORMATION ALEXANDER ESTIMATED DEPTH 5600'

WELL OPERATOR KEY OIL COMPANY DESIGNATED AGENT JAN CHAPMAN **JUN 15 2001**
ADDRESS 22 GARTON PLAZA WESTON, WV 26452 ADDRESS 22 GARTON PLAZA WESTON, WV 26452



(+) DENOTES LOCATION OF WELL ON UNITED STATES TOPOGRAPHIC MAPS.
DATE MAY 10 20 01
OPERATORS WELL NO. MAXWELL/FARR NO. 2
API WELL NO. 47-017 STATE 47 COUNTY 017 PERMIT 04605

STATE OF WEST VIRGINIA
DIVISION OF ENVIRONMENTAL PROTECTION
OFFICE OF OIL AND GAS

DODD 4605

6-6-99

February 24, 2002
API# 47-017-04605

State of West Virginia
Division of Environmental Protection
Section of Oil and Gas

Ar

Well Operators Report of Well Work

Farm name: Key Oil Company Operator Well #: Maxwell/Farr #2

Location: Elevation: 1053' Quadrangle: West Union 7.5'

District: West Union County Doddridge
Latitude 3,580 feet south of 39 Deg. 17 Min. 30 Sec.
Longitude 180 feet west of 80 Deg. 45 Min. 00 Sec.

Company: Key Oil Company
22 Garton Plaza
Weston, WV 26452

Agent: Jan Chapman Casing Used in Left in Cement
Drilling Well Fill up

Inspector: Mike Underwood
Permit Issued: 06-14-01 8-5/8 1071 1071 210sk
Well Work Commented: 01-01-02
Well Work Completed: 01-05-02 4-1/2 5310 480 sks

Verbal Plugging
Permission granted on:

Rotary X Cable _____ Rig

Total Depth (ft) ?

Fresh water depth (ft) 701'

Salt water depth (ft) N/A

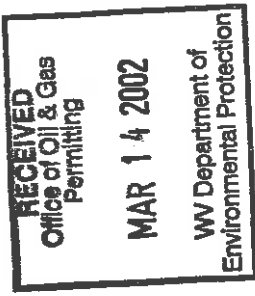
Is coal being mined in are (Y/N) N

Coal depths (ft)

OPEN FLOW DATA

Producing formation: Alexander Pay zone depths (ft) 5169-5236
Gas: Initial open flow odor mcf/d Initial open flow bbls/day
Final open flow 1571 mcf/d Final open flow bbls/day
Time of open flow between initial and final tests 48 Hours
Static rock pressure 1775 psig (surface pressure) after 48 Hours

Other producing formation: Warren/Balltown/Riley/Benson Pay zone depths (ft) 3280-4912
Gas: Initial open flow * mcf/day Oil Initial open flow bbls/day
Final open flow * mcf/day Final open flow bbls/day
Time of open flow between initial and final tests 48 Hours
Static rock pressure * psig (surface pressure) after 48 Hours
*=-commingled zones



For: Key Oil Company
By: *[Signature]*
Date: 02-24-02

0000 4605

MAR 22 2002

API # 47-017-04605
Maxwell/Farr #2

| | | | |
|--|--------------------|-----------------|-----------------|
| Stage #1 Alexander | perfs 5169-5236 | sand 600 sks | 60 quality foam |
| Stage #2 3 rd Riley/Benson | 4834-4913 | 350 sks | 60 quality foam |
| Stage #3 Balltown/Riley | 4041-4496 | 300 sks | 60 quality foam |
| Stage #4 Speechly/Warren | 3280-3399 | 500 sks | 60 quality foam |

Drillers Log

Electric Log Tops

| | | | |
|-----------|-----------|--|--|
| KB/GL | 0-10 | | |
| Fill | 10-15 | | |
| Caly | 15-18 | | |
| Sh/RR | 18-512 | | |
| Sd | 512-538 | | |
| Sd | 538-570 | | |
| Sd/Sh | 570-915 | | |
| Sh/RR | 915-940 | | |
| Sd/Sh | 940-1149 | oil odor @ 942' | |
| Sd/Sh | 1149-1825 | | |
| B. Lime | 1825-1997 | gas check @ 1768' 156 mcf, strong oil odor @ 1855' | |
| B. Injun | 1997-2027 | | |
| Sd/Sh | 2027-3200 | gas check @ 2110' 273 mcf, gas check @ 2485' 154 mcf | |
| Warren | 3200-3240 | | |
| Sd/Sh | 3240-3805 | gas check @ 3696' 198 mcf | |
| Balltown | 3805-3915 | | |
| Sd/Sh | 3915-4435 | gas check @ 4402' 119 mcf | |
| Riley | 4435-4480 | | |
| Sd/Sh | 4480-4850 | | |
| Benson | 4850-4860 | | |
| Sd/Sh | 4860-5180 | gas check @ 4867' 119 mcf | |
| Alexander | 5180-5240 | | |
| Sd/Sh | 5240-5327 | | |