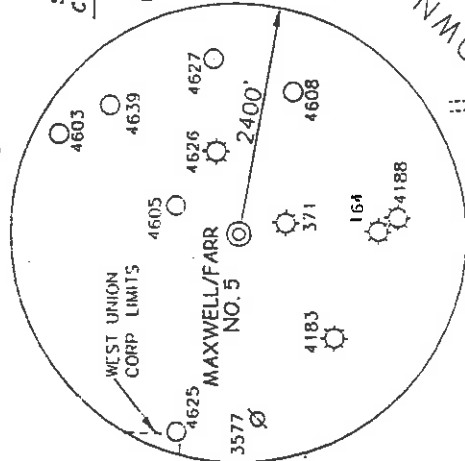


MAXWELL/FARR LEASE 137 ACRES ± MAXWELL/FARR NO. 5

WELL NO. 5
STATE PLANE
COORDINATES

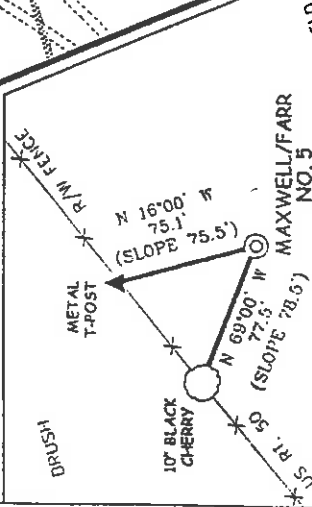
(N) 290,515
(E) 1,642,323



NOTES ON SURVEY

- TIES TO WELLS AND CORNERS ARE BASED ON STATE PLANE GRID NORTH
- WV NORTH ZONE NAD 83
- TIES TO REFERENCES ARE BASED ON MAGNETIC NORTH 10-18-01. LEASE BOUNDARY SHOWN HEREON TAKEN FROM DEED BOOK 233 ON PAGE 636.
- SURFACE OWNER AND ADJOINER INFORMATION TAKEN FROM THE ASSESSOR AND COUNTY CLERK RECORDS OF DODDRIDGE COUNTY IN APRIL, 2001.
- WELL LAT./LONG. ESTABLISHED BY DGPS (SUBMETER MAPPING GRADE).

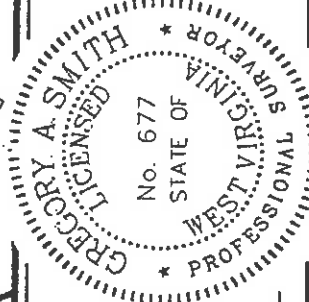
REFERENCES



1" = 100'

I, THE UNDERSIGNED, HEREBY CERTIFY THAT THIS PLAT IS CORRECT TO THE BEST OF MY KNOWLEDGE AND BELIEF AND SHOWS ALL THE INFORMATION REQUIRED BY LAW AND THE REGULATIONS ISSUED AND PRESCRIBED BY THE DIVISION OF ENVIRONMENTAL PROTECTION.

P.S. *Gregory A. Smith*
677



MINIMUM DEGREE OF ACCURACY 1 / 200 FILE NO. 4762P5M (109-135)
PROVEN SOURCE SCALE 1" = 800'
OF ELEVATION BENCH MARK ELEVATION 792'

WELL TYPE : OIL GAS INJECTION WASTE IF "GAS" PRODUCTION STORAGE DEEP SHALLOW
LOCATION : ELEVATION 999' WATERSHED MIDDLE ISLAND CREEK

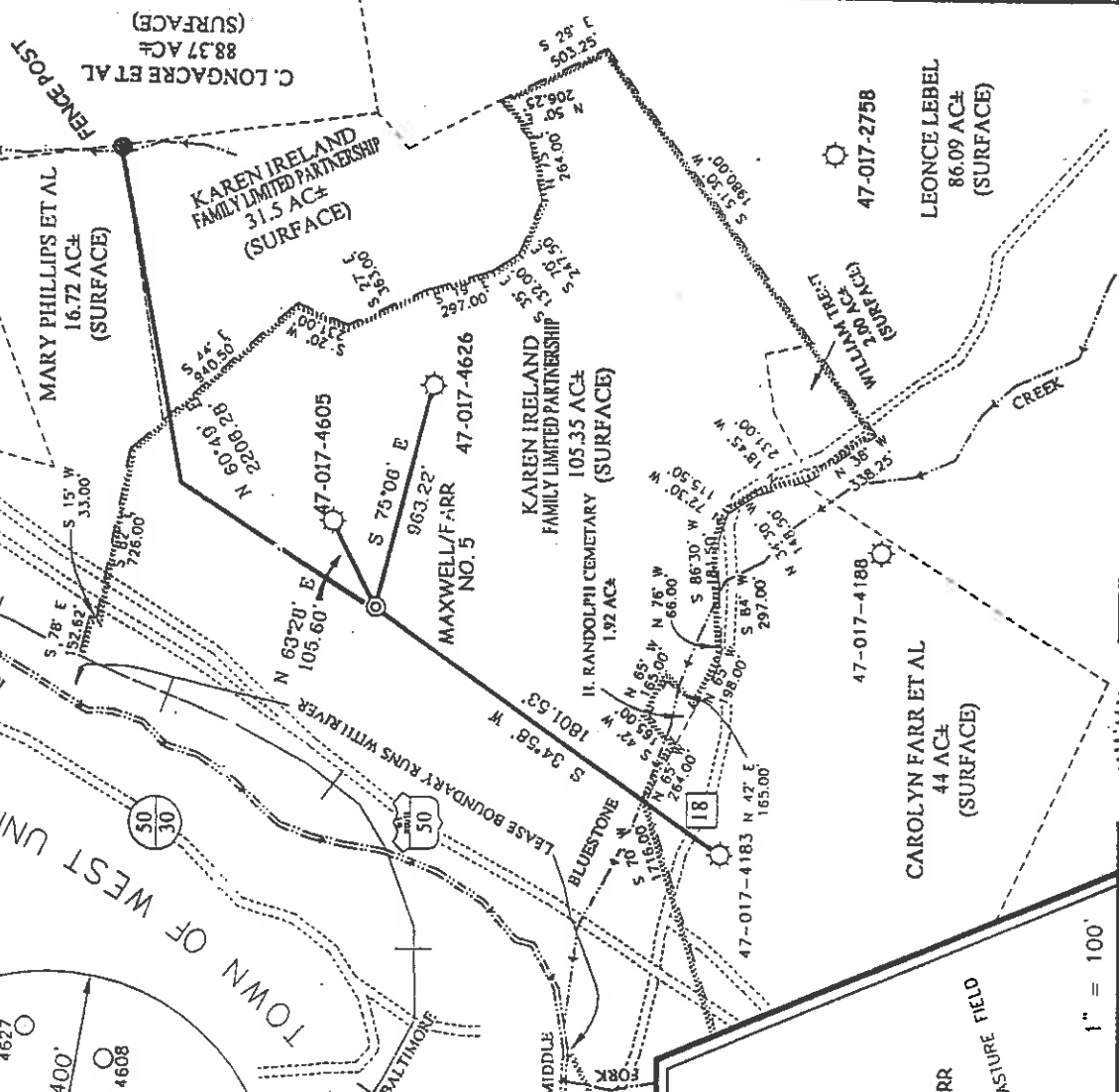
DISTRICT WEST UNION COUNTY DODDRIDGE QUADRANGLE WEST UNION 7.5'
SURFACE OWNER KAREN IRELAND FAMILY LIMITED PARTNERSHIP ACREAGE 105.35±
ROYALTY OWNER ROBERT MAXWELL AND CAROLYN FARR ET AL LEASE ACREAGE 137± LEASE NO. _____

PROPOSED WORK :
DRILL CONVERT DRILL DEEPER REDRILL FRACTURE OR STIMULATE PLUG OFF OLD
FORMATION PERFORM NEW FORMATION PLUG AND ABANDON CLEAN OUT AND REPLUG OTHER
PHYSICAL CHANGE IN WELL (SPECIFY) _____ TARGET FORMATION GORDON ESTIMATED DEPTH 3,000'

COUNTY NAME Dodd PERMIT 4717

WELL OPERATOR ALPHEA OIL AND GAS DESIGNATED AGENT JOHN SPIKER
ADDRESS P.O. BOX 68 REYNOLDSVILLE, WV 26472 ADDRESS RT. 1 BOX 161-S JANE LEW, WV 26378
(SMITHSON FIELD FILE 9A)

LONG. 80°45'49.5" LATITUDE 39°17'30"
LONGITUDE 80°45'00" LAT. 39°17'26.6" 300'



(+) DENOTES LOCATION OF WELL ON UNITED STATES TOPOGRAPHIC MAPS.
DATE SEPTEMBER 24, 2002
OPERATORS WELL NO. MAXWELL/FARR NO. 5
API WELL NO. 47-17-17-04717
STATE COUNTY PERMIT

STATE OF WEST VIRGINIA
DIVISION OF ENVIRONMENTAL PROTECTION
OFFICE OF OIL AND GAS



04-15-03
API# 47-017-04717

State of West Virginia
Division of Environmental Protection
Section of Oil and Gas

Ar B

Well Operators Report of Well Work

Farm name: Ireland Operator Well #: Maxwell/Farr #5

Location: Elevation: 999' Quadrangle: West Union 7.5'

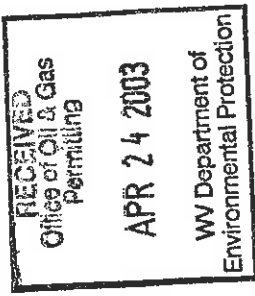
District: West Union County: Doddridge
Latitude: 500 feet south of 39 Deg. 20 Min. 00 Sec.
Longitude: 3,850 feet west of 80 Deg. 45 Min. 00 Sec.

Company: Alpha Gas Corp.
P.O. Box 68
Reynoldsville WV 26422

Agent: John Spiker Casing Used in Left in Cement
Drilling Well Well Fill up

Inspector: Mike Underwood
Permit Issued: 11-18-02
Well Work Commenced: 03-25-02
Well Work Completed: 03-29-03
Verbal Plugging
Permission granted on:
Rotary Cable _____ Rig
Total Depth (ft) 2823'
Fresh water depth (ft) N/A
Salt water depth (ft) N/A
Is coal being mined in are (Y/N) N
Coal depths (ft) N/A

1032 1032 1032 245 sks
2823 2823 2683 235 sks



OPEN FLOW DATA

Producing formation Big Injun Pay zone depths (ft) 1880-2004
Gas: Initial open flow 220 mcf/d Oil: Initial open flow bbls/day
Final open flow 500 mcf/d Final open flow bbls/day
Time of open flow between initial and final tests 48 Hours
Static rock pressure 340# psig (surface pressure) after 48 Hours

Other producing formation Gordon Pay zone depths (ft) 2560-2680
Gas: Initial open flow * mcf/day Oil: Initial open flow bbls/day
Final open flow * mcf/day Final open flow bbls/day
Time of open flow between initial and final tests 48 Hours
Static rock pressure psig (surface pressure) after 48 Hours
* = commingled zones

0000 4717

For: Alpha Gas Corporation

By: *[Signature]*
Date: 04-15-03

JUN 10 2003

Maxwell/Farr #5
04-09-03

Stimulation	Stage #	perfs	sand	avg rate	isip
Gordon		2522-2574	200 sks	32 bpm	2500#
Big Injun		1882-1919	200 sks	32 bpm	1420#
Big Injun		1847-1862	200 sks	32 bpm	1150#
Maxton		1760-1770	100 sks	20 bpm	2220#

Drillers Log

Fill	0	35
Sh	35	125
Sd	125	190
Sd/Sh	190	1115
Sd	1115	1220
Sh	1220	1620
Sd	1620	1730
Sh	1730	1760
Sd	1760	1780
Sh	1780	1795
BL	1795	1850
Sd	1850	1980
Sh	1980	2530
Sd	2530	2680
Sh	2680	2823
Td	2823	

Electric Log Tops

Big Lime	1792
Keener	1850
Big Injun	1882
Berea	2336
Gordon	2526