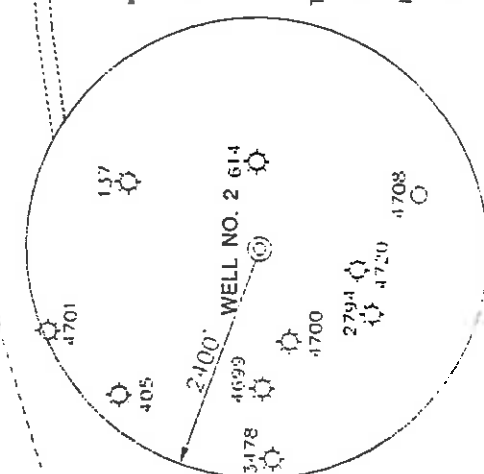
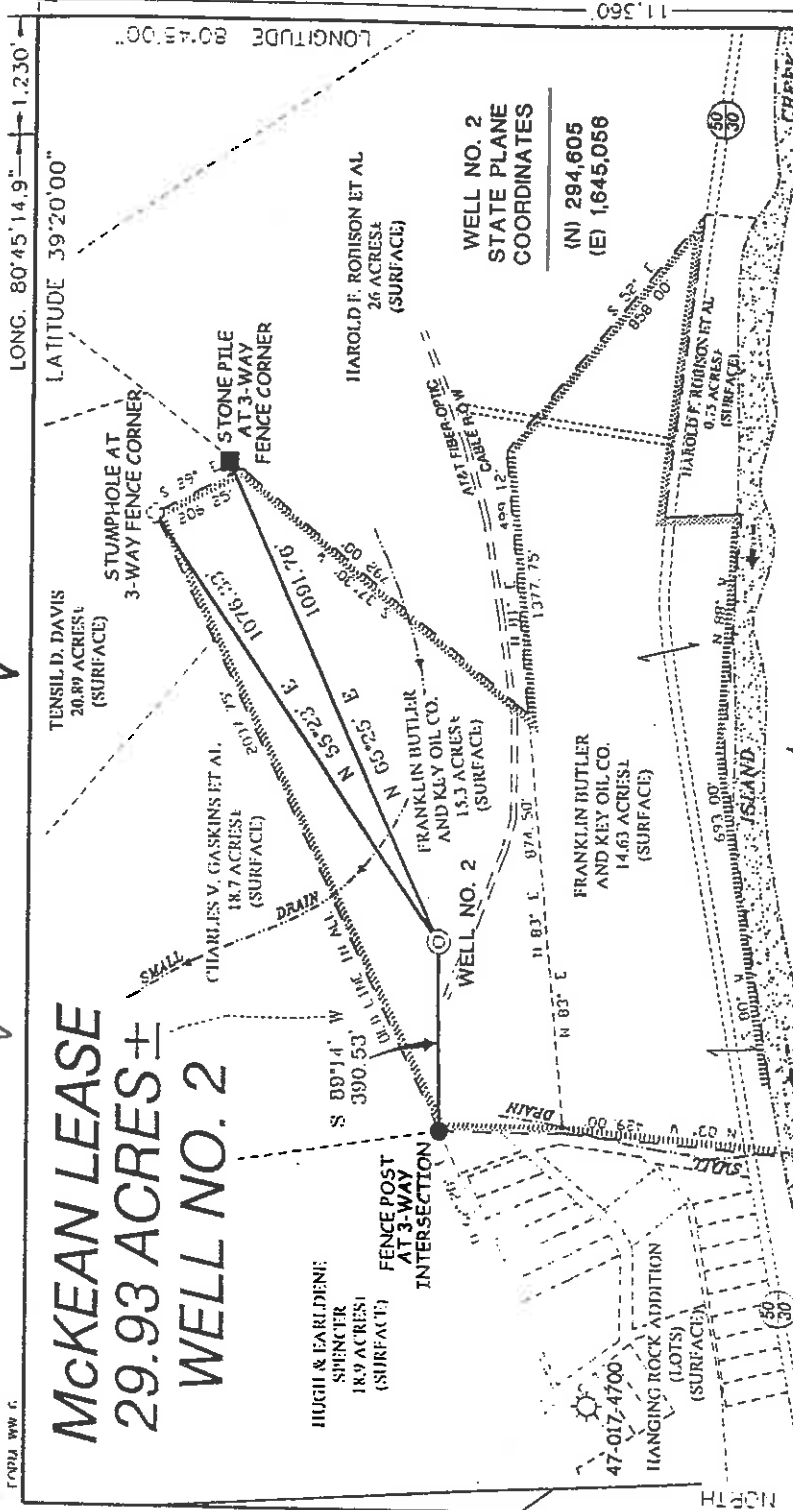


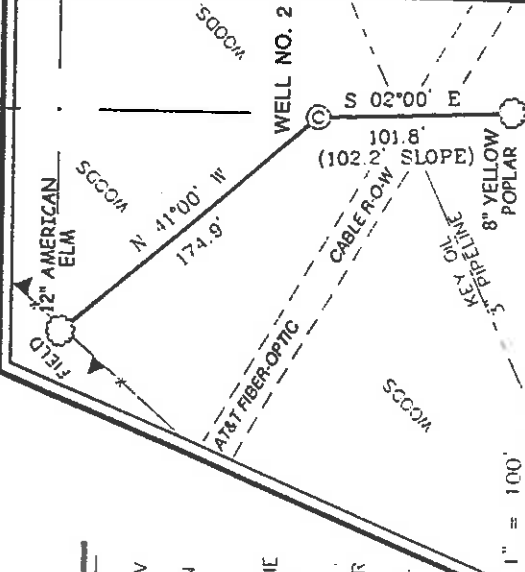
MCKEAN LEASE 29.93 ACRES ± WELL NO. 2



NOTES ON SURVEY

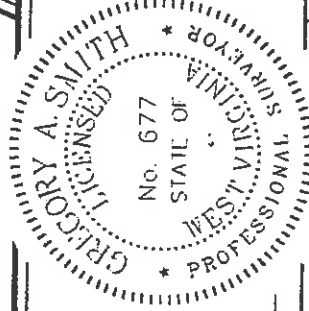
1. TIES TO WELLS AND CORNERS ARE BASED ON STATE PLANE GRID NORTH WV NORTH ZONE NAD '27
2. TIES TO REFERENCES ARE BASED ON MAGNETIC NORTH 03/4/03.
3. LEASE BOUNDARY SHOWN HEREON TAKEN FROM DEEDS AS RECORDED IN THE DODDRIDGE COUNTY CLERKS OFFICE IN DEED BOOKS 22 & 25 ON PAGES 351.
4. SURFACE OWNER AND ADJOINER INFORMATION TAKEN FROM THE ASSESSOR AND COUNTY CLERK RECORDS OF DODDRIDGE COUNTY IN FEBRUARY, 2003.
5. WELL LAT./LONG. ESTABLISHED BY DGPS (SUBMETER MAPPING GRADE).

REFERENCES



I THE UNDERSIGNED, HEREBY CERTIFY THAT THIS PLAN IS CORRECT TO THE REST OF MY KNOWLEDGE AND BELIEF AND SHOWS ALL THE INFORMATION REQUIRED BY LAW AND THE REGULATIONS ISSUED AND PRESCRIBED BY THE DIVISION OF ENVIRONMENTAL PROTECTION.

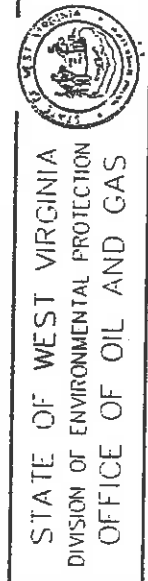
F.S. 677
Gregory A. Smith



(+) DENOTES LOCATION OF WELL ON UNITED STATES TOPOGRAPHIC MAPS.

DATE MARCH 4, 2003
 OPERATOR'S WELL NO. 2
 API NO. 2
 WELL NO. 47-017-017 STATE COUNTY PERMIT 04732

MINIMUM DEGREE OF ACCURACY 1 / 200 FILE NO 5198P2 (126-77)
 PROVEN SOURCE OF ELEVATION SCALE 1" = 100'
 BENCHMARK ELEVATION 833'



WELL TYPE: OIL GAS LIQUID WASTE INJECTION DISPOSAL "GAS" PRODUCTION STORAGE DEEP SHALLOW

LOCATION: ELEVATION 948' WATERSHED ROCK RUN OF MIDDLE ISLAND CREEK

DISTRICT WEST UNION COUNTY DODDRIDGE

SURFACE OWNER FRANKLIN BUTLER AND KEY OIL COMPANY QUADRANGLE WEST UNION 7.5'
 ROYALTY OWNER FRANKLIN BUTLER AND KEY OIL COMPANY ACREAGE 29.93± (ASSESSED)
 PROPOSED WORK LEASE ACREAGE 29.93± LEASE NO. _____

DRILL CONVERT DRILL DEEPER REDRILL FRACTURE OR STIMULATE PLUG OFF OLD FORMATION PERFORATE NEW FORMATION PLUG AND ABANDON CLEAN OUT AND REPLUG OTHER _____

PHYSICAL CHANGE IN WELL (SPECIFY) _____ TARGET FORMATION GORDON
 ESTIMATED DEPTH 3000'

WELL OPERATOR KEY OIL COMPANY DESIGNATED AGENT JAN CHAPMAN
 ADDRESS 22 CARTON PLAZA WESTON, WV 26452
 ADDRESS 22 CARTON PLAZA WESTON, WV 26452

0000 COUNTY NAME 4732 PERMIT

(Signature) _____

State of West Virginia
Division of Environmental Protection
Section of Oil and Gas

ARB

Well Operator's Report of Well Work

Farm Name: FRANKLIN BUTLER AND KEY OIL COMPANY

Operator Well No. : MCKEAN #2

LOCATION: Elevation: 948.00

Quadrangle: WEST UNION

District: WEST UNION County: DODDRIDGE
Latitude: 11,360 Feet South of 39 Deg. 20 Min. 00 Sec.
Longitude: 1,230 Feet West of 80 Deg. 45 Min. 00 Sec.

Company: KEY OIL COMPANY
22 GARTON PLAZA
WESTON, WV 26452-0000

Agent: JAN E. CHAPMAN

Inspector: MIKE UNDERWOOD
Permit Issued: 05/13/03
Well Work Commenced: 06/17/03
Well Work Completed: 06/20/03

Verbal Plugging
Permission granted on: _____
Rotary X Cable _____ Rig
Total Depth (feet) 2750'
Fresh water depths (ft) 70', 450'
Salt water depths (ft) NONE

Is coal being mined in area (Y / N)? N
Coal Depths (ft): NONE

OPEN FLOW DATA

Casing & Tubing Size	Used in Drilling	Left In Well	Cement Fill Up Cu. Ft.
8 5/8"	972'	972'	200 sks To Surface
4 1/2"	2701'	2701'	250 sks

RECEIVED
Office of Oil & Gas Permitting
AUG 07 2003
WV Department of Environmental Protection

Producing formation Keener
Gas: Big Injun Gordon
Initial open flow 94 MCF / d
Final open flow 762 MCF / d
Time of open flow between initial and final tests N/A
Static rock pressure 260 psig (surface pressure) after 96 Hours

Second producing formation Commingle
Gas: Initial open flow _____ MCF / d
Final open flow _____ MCF / d
Time of open flow between initial and final tests _____
Static rock pressure _____ psig (surface pressure) after _____ Hours

Pay zone depth (ft)
Oil: Initial open flow _____ Bbl / d
Oil: Final open flow _____ Bbl / d
Time of open flow between initial and final tests _____ Hours
Static rock pressure _____ psig (surface pressure) after _____ Hours

NOTE: ON BACK OF THIS FORM PUT THE FOLLOWING: 1). DETAILS OF PERFORATED INTERVALS, FRACTURING OR STIMULATING, PHYSICAL CHANGE, ETC. 2). THE WELL LOG WHICH IS A SYSTEMATIC DETAILED GEOLOGICAL RECORD OF ALL FORMATIONS, INCLUDING COAL ENCOUNTERED BY THE WELLBORE.

For: KEY-OIL COMPANY
By: *Jan Chapman*
Date: August 3, 2003

PRESIDENT

AUG 2 2003
Dodd 4732

McKean #2 (47-017-4732)
Two Stage Foam Frac - BJ Well Services

1st Stage: Gordon (16 holes) (2520' to 2548') 60 Quality Foam. 500 gal. 15% HCL.
40,000# 20/40 sand, 420,000 SCF N2,
615 bbis foam.

2nd Stage: Big Injun/Squaw (20 holes) (1892' to 1948') 60 Quality Foam. 750 gal 15% HCL.
Keener (10 holes) (1837' to 1863') 30,000# 20/40 sand, 359,000 SCF N2,
526 bbis foam.

WELL LOG

KB-GL	0	10	
Clay	10	15	
Sand	15	23	
Sand & Shale & Red Rock	23	76	1/2" water @ 70'
Sand & Shale	76	90	
Sand	90	120	
Red Rock	120	130	
Sand	130	172	
Sand & Shale & Red Rock	172	216	
Sand	216	240	
Sand & Shale	240	665	2" water @ 450'
Red Rock	665	728	
Sand & Shale	728	1732	
Little Lime	1732	1748	
Shale	1748	1764	
Big Lime	1764	1834	
Keener	1834	1880	
Big Injun/Squaw	1880	1957	2265' - 4/10 ^{ths} water/w 2"
Shale	1957	2092	2519' - 6/10 ^{ths} water/w 2"
Weir	2092	2185	
Shale	2185	2296	
Berea	2296	2315	
Sand & Shale	2315	2498	
Gordon	2498	2551	
Shale	2551	2750	
TD	2750		

Gas Checks

1698' - No Show
2014' - 6/10^{ths} water/w 2"
2265' - 4/10^{ths} water/w 2"
2519' - 6/10^{ths} water/w 2"