

SURVEYED LONG. 80° 46' 52.7"

8860'

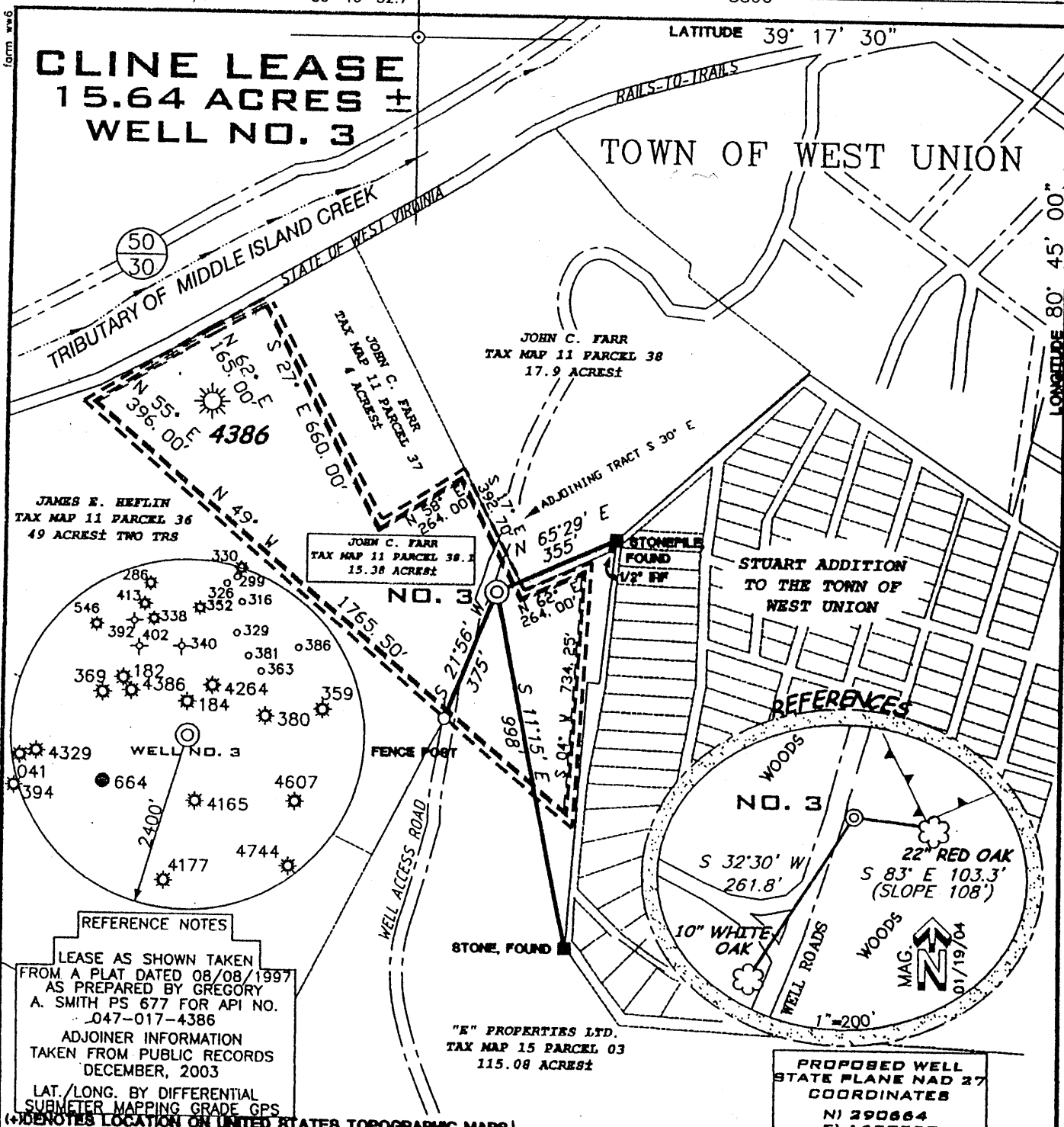
LATITUDE 39° 17' 30"

SURVEYED LAT. 39° 17' 27.4"

LONGITUDE 80° 45' 00"

CLINE LEASE 15.64 ACRES ± WELL NO. 3

TOWN OF WEST UNION



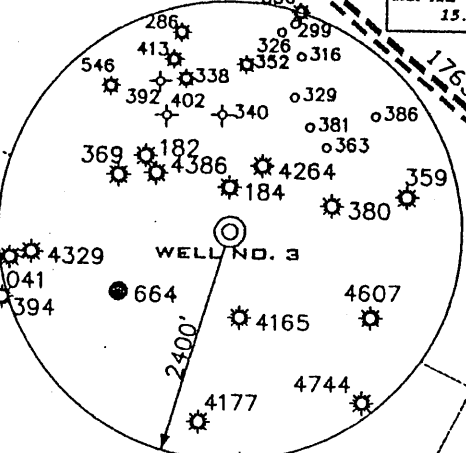
JAMES E. HEFLIN
TAX MAP 11 PARCEL 36
49 ACRES ± TWO TRS

JOHN C. FARR
TAX MAP 11 PARCEL 38
17.9 ACRES ±

JOHN C. FARR
TAX MAP 11 PARCEL 38.1
15.38 ACRES ±

STUART ADDITION
TO THE TOWN OF
WEST UNION

REFERENCES



REFERENCE NOTES

LEASE AS SHOWN TAKEN FROM A PLAT DATED 08/08/1997 AS PREPARED BY GREGORY A. SMITH PS 677 FOR API NO. 047-017-4386

ADJOINER INFORMATION TAKEN FROM PUBLIC RECORDS DECEMBER, 2003

LAT./LONG. BY DIFFERENTIAL SUBMETER MAPPING GRADE GPS

(+ DENOTES LOCATION ON UNITED STATES TOPOGRAPHIC MAPS)

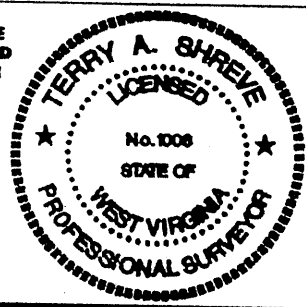
"E" PROPERTIES LTD.
TAX MAP 15 PARCEL 03
115.08 ACRES ±

PROPOSED WELL
STATE PLANE NAD 27
COORDINATES
N) 290664
E) 1637357

FILE NUMBER	030043
DRAWING NUMBER	WP3(W1-40)
SCALE	1"=400'
MINIMUM DEGREE OF ACCURACY	1/200
PROVEN SOURCE OF ELEVATION	TOP OF KNOB ELEVATION 1214'

I THE UNDERSIGNED HEREBY CERTIFY THAT THIS PLAT IS CORRECT TO THE BEST OF MY KNOWLEDGE AND BELIEF AND SHOWS ALL THE INFORMATION REQUIRED BY LAW AND THE REGULATIONS ISSUED AND PRESCRIBED BY THE DEPARTMENT OF ENVIRONMENTAL PROTECTION

P.S. 1008 *Terry A. Shreve*



STATE OF WEST VIRGINIA
DIVISION OF ENVIRONMENTAL PROTECTION
OFFICE OF OIL AND GAS



DATE: JANUARY 21, 2004
OPERATORS WELL NO. CLINE NO. 3
API WELL NO. 47-017-04805
STATE COUNTY PERMIT

WELL TYPE: OIL ___ GAS LIQUID INJECTION ___ WASTE DISPOSAL ___
OF "GAS" PRODUCTION ___ STORAGE ___ DEEP ___ SHALLOW
LOCATION ELEVATION 1058' WATERSHED MIDDLE ISLAND CREEK
DISTRICT WEST UNION COUNTY DODDRIDGE
QUADRANGLE WEST UNION 7.5' LEASE NUMBER

SURFACE OWNER JOHN C. FARR ACREAGE 15.38±
OIL & GAS ROYALTY OWNER HARRY E. CLINE AND JOHN C. FARR LEASE ACREAGE 15.64±

PROPOSED WORK: DRILL CONVERT ___ DRILL DEEPER ___ REDRILL ___ FRACTURE OR STIMULATE PLUG OFF OLD FORMATION ___
PERFORATE NEW FORMATION ___ OTHER PHYSICAL CHANGE (SPECIFY)

TARGET FORMATION GORDON PLUG & ABANDON ___ CLEAN OUT & REPLUG ___
WELL OPERATOR KEY OIL COMPANY ESTIMATED DEPTH 3000'

ADDRESS 22 GARTON PLAZA WESTON, WV 26452 ADDRESS 22 GARTON PLAZA WESTON, WV 26452

COUNTY NAME PERMIT

0000-4805

6-6 straight FK - Bluestone (K) (133)

State of West Virginia
Division of Environmental Protection
Section of Oil and Gas

Well Operator's Report of Well Work

Farm Name: JOHN C. FARR

Operator Well No. CLINE NO. 3

LOCATION: Elevation: 1058'

Quadrangle: WEST UNION

District: WEST UNION

County: DODDRIDGE

Latitude: 310 Feet South of 39 Deg. 17 Min. 30 Sec.

Longitude: 8860 Feet West of 80 Deg. 45 Min. 00 Sec.

Company: KEY OIL COMPANY
22 GARTON PLAZA
WESTON, WV 26452-0000

Agent: JAN CHAPMAN

Inspector: MIKE UNDERWOOD
Permit Issued: 03/11/04
Well Work Commenced: 11/30/05
Well Work Completed: 12/02/05

Verbal Plugging
Permission granted on: _____
Rotary X Cable _____ Rig
Total Depth (feet) 2847'
Fresh water depths (ft) 47'
Salt water depths (ft) NONE

Is coal being mined in area (Y / N)? N
Coal Depths (ft): NONE

Casing & Tubing Size	Used in Drilling	Left In Well	Cement Fill Up Cu. Ft.
8 5/8"	1052'	1052'	240 sks To Surface
4 1/2"	2734'	2734'	250 sks.

RECEIVED
Office of Oil & Gas
Office of Chief
FEB 27 2006
WV Department of
Environmental Protection

OPEN FLOW DATA

Producing formation Big Injun 1996' - 2068'
Gordon Pay zone depth (ft) 2620' - 2658'
Gas: Initial open flow No Show MCF / d Oil: Initial open flow 0 Bbl / d
Final open flow 1,958 MCF / d Oil: Final open flow show Bbl / d
Time of open flow between initial and final tests N/A Hours
Static rock pressure 250 psig (surface pressure) after 96 Hours

Second producing formation _____ Pay zone depth (ft) _____
Gas: Initial open flow Commingled MCF / d Oil: Initial open flow _____ Bbl / d
Final open flow Commingled MCF / d Oil: Final open flow _____ Bbl / d
Time of open flow between initial and final tests _____ Hours
Static rock pressure _____ psig (surface pressure) after _____ Hours

NOTE: ON BACK OF THIS FORM PUT THE FOLLOWING: 1). DETAILS OF PERFORATED INTERVALS, FRACTURING OR STIMULATING, PHYSICAL CHANGE, ETC. 2). THE WELL LOG WHICH IS A SYSTEMATIC DETAILED GEOLOGICAL RECORD OF ALL FORMATIONS, INCLUDING COAL ENCOUNTERED BY THE WELLBORE.

For: KEY OIL COMPANY

By: Jan Chapman
Date: February 21, 2006

PRESIDENT
MAR 03 2006

0000
4805

Cline #3 (47-017-4805)
Two Stage Foam Frac – BJ Services

⁴¹⁹
1st Stage: Gordon(15 holes) (2650' to 2659')
60 Quality Foam.
500 gal. 15% HCL., 25,000# 20/40 sand,
225,000 SCF N2, 255 bbls foam

2nd Stage: Big Injun (15 holes) (2004' to 2063')
60 Quality Foam,
500 gal 15% HCl, 25,000# 20/40 sand,
230,000 SCF N2, 278 bbls foam

WELL LOG

KB	0	10
Sand & Shale & Red Rock	10	224
Red Rock	224	363
Sand & Shale	363	616
Sand	616	633
Red Rock & Shale	633	923
Shale & Sand	923	1270
Sand	1270	1312
Sand & Shale	1312	1880
Little Lime	1880	1900
³³¹ Big Lime	<u>1900</u>	1996
³¹⁵ Big Injun	1996	2068
³⁷¹ Shale	2068	2218
³⁸⁷ Weir	2218	2319
Shale	2319	2420
³⁹⁵ Berea	2420	2430
Sand & Shale	2430	2620
⁴¹⁹ Gordon	2620	2658
Sand & Shale	2658	2847
TD	2847	

Damp @ 42'

Gas Checks

1912' – No Show
2163' – No Show
2633' – No Show

AA