



**Antero Resources**  
**Ruckman Unit 2H**  
**Doddridge County WV**  
**Northing: 14217496.43**  
**Easting: 1726781.97**  
**Original Wellpath**

**WELL DETAILS:** Ruckman Unit 2H

|               |        |           |                                   |
|---------------|--------|-----------|-----------------------------------|
| Ground Level: | 1250.0 | Northing: | 14217496.43                       |
| +N/-S:        | 0.0    | Easting:  | 1726781.97                        |
| -E/+W:        | 0.0    | Latitude: | 39° 07' 8.90" N 80° 41' 43.263" W |
| Longitude:    |        | Site:     |                                   |

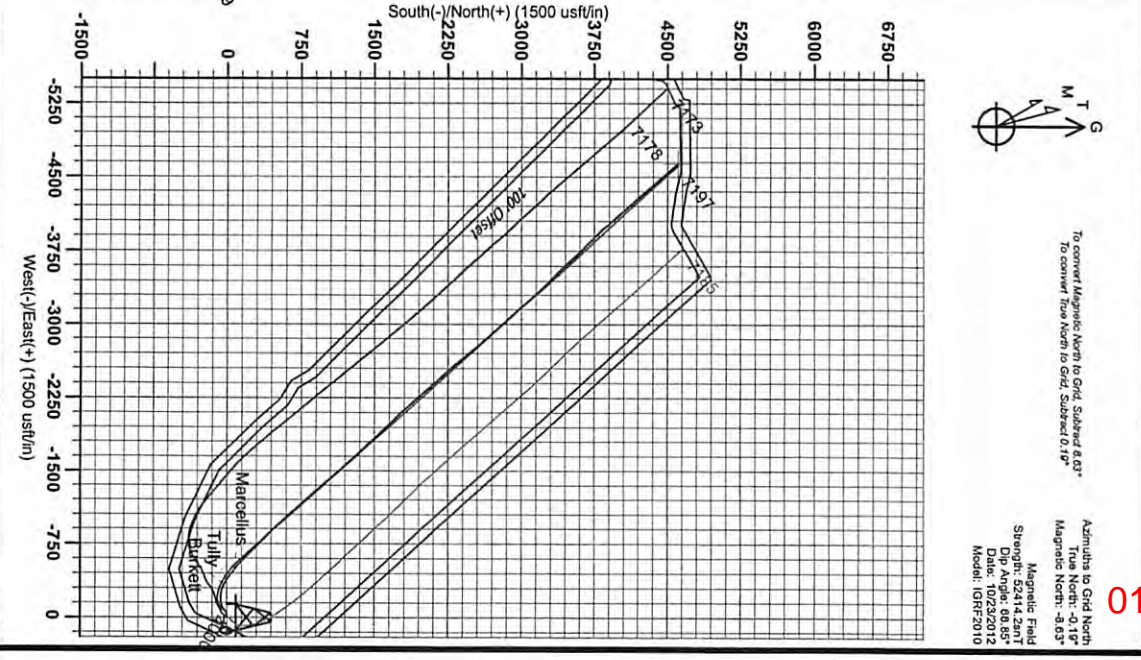
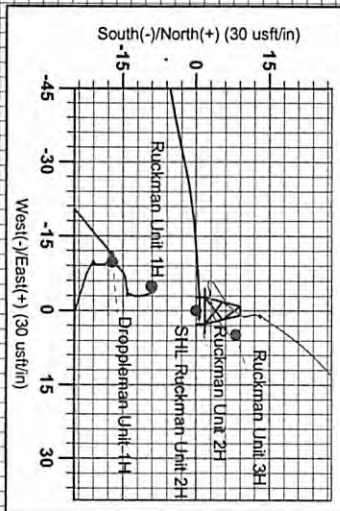
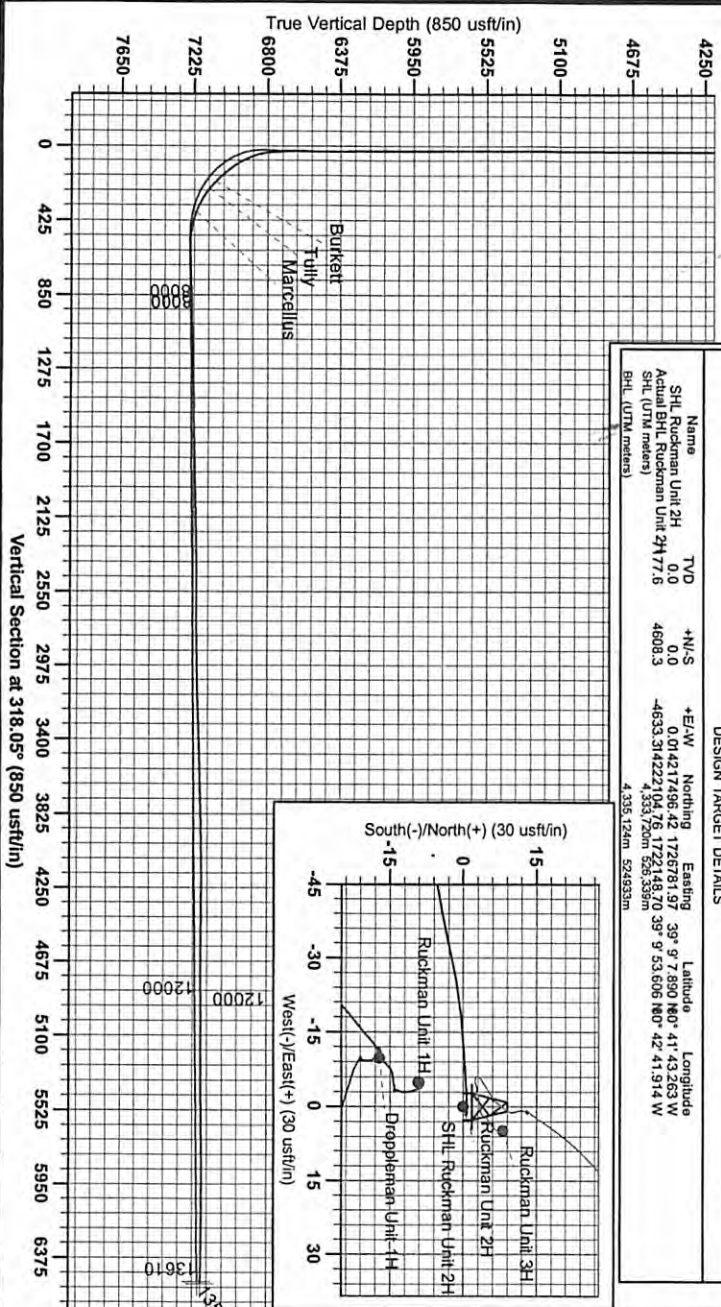
**REFERENCE INFORMATION**  
 Geomatics (N/E) Reference: WA Ruckman Unit 2H, 0301 Meter Station (N/S) Reference: 889.7 (0.004, 0.001) Meter Station (E/W) Reference: 889.7 (0.004, 0.001) Calculation Method: Minimum Curvature  
 Scientific Drilling  
 421 South Eagle Lane  
 Oklahoma City, OK  
 14-25, September 06 2013

**LEGEND**

- Original Wellpath
- Ruckman Unit 2H, Original Wellpath, Para 3 VO
- Ruckman Unit 1H, Original Wellpath, Original Wellpath VO
- Ruckman Unit 2H, Original Wellpath, Original Wellpath VO
- Ruckman Unit 3H, Original Wellpath VO
- Original Wellpath

**DESIGN TARGET DETAILS**

| Name                             | TVD    | +N/-S   | -E/+W      | Northing    | Easting                               | Latitude                          | Longitude |
|----------------------------------|--------|---------|------------|-------------|---------------------------------------|-----------------------------------|-----------|
| SHL Ruckman Unit 2H              | 0.0    | 0.0     | 0.0        | 14217496.43 | 1726781.97                            | 39° 07' 8.90" N 80° 41' 43.263" W |           |
| Actual BHL Ruckman Unit 2H 177.6 | 4608.3 | -4693.3 | 3142221.04 | 76.1722148  | 70.39° 9' 53.606" N 80° 42' 41.914" W |                                   |           |
| SHL (UTM meters)                 |        |         | 4,335,726m | 528,339m    |                                       |                                   |           |
| BHL (UTM meters)                 |        |         | 4,335,126m | 528,939m    |                                       |                                   |           |



**To convert Magnetic North to Grid, Subtract 8.97°**  
**To convert True North to Grid, Subtract 0.19°**

**Azimuths to Grid North**  
 True North: -9.16°  
 Magnetic North: -0.03°

**Magnetic Field**  
 Strength: 52414.2nT  
 Dip Angle: 68.85°  
 Date: 10/23/2012  
 Model: IGRF2010