

State of West Virginia
Department of Environmental Protection - Office of Oil and Gas
Well Operator's Report of Well Work

API 47 - 017 - 06415 County Doddridge District Central
Quad Pennsboro 7.5' Pad Name Alvadore Field/Pool Name ---
Farm name McCloy, Alvadore, Jr., et ux Well Number Hudkins Unit 1H
Operator (as registered with the OOG) Antero Resources Corporation
Address 1615 Wynkoop St. City Denver State CO Zip 80202

As Drilled location NAD 83/UTM Attach an as-drilled plat, profile view, and deviation survey
Top hole Northing 4347124m Easting 510126m
Landing Point of Curve Northing 4346184.07m Easting 510769.05m
Bottom Hole Northing 4345112m Easting 511280m

Elevation (ft) 1057' GL Type of Well New Existing Type of Report Interim Final
Permit Type Deviated Horizontal Horizontal 6A Vertical Depth Type Deep Shallow
Type of Operation Convert Deepen Drill Plug Back Redrilling Rework Stimulate
Well Type Brine Disposal CBM Gas Oil Secondary Recovery Solution Mining Storage Other _____
Type of Completion Single Multiple Fluids Produced Brine Gas NGL Oil Other _____
Drilled with Cable Rotary

Drilling Media Surface hole Air Mud Fresh Water Intermediate hole Air Mud Fresh Water Brine
Production hole Air Mud Fresh Water Brine
Mud Type(s) and Additive(s)
Air- Foam & 4% KCL
Mud- Polymer

Date permit issued 1/24/2014 Date drilling commenced 6/15/2014 Date drilling ceased 11/1/2014
Date completion activities began 12/8/2014 Date completion activities ceased 3/5/2015
Verbal plugging (Y/N) N/A Date permission granted N/A Granted by N/A

Please note: Operator is required to submit a plugging application within 5 days of verbal permission to plug

Freshwater depth(s) ft 332' Open mine(s) (Y/N) depths No
Salt water depth(s) ft 1546', 1571' Void(s) encountered (Y/N) depths No
Coal depth(s) ft None Identified Cavern(s) encountered (Y/N) depths No
Is coal being mined in area (Y/N) No

RECEIVED
Office of Oil and Gas

AUG 03 2015

WV Department of
Environmental Protection

Reviewed by:
DA 8/21/15
10/23/2015

API 47-017 - 06415

Farm name McCloy, Alvadore, Jr., et ux

Well number Hudkins Unit 1H

CASING STRINGS	Hole Size	Casing Size	Depth	New or Used	Grade wt/fl	Basket Depth(s)	Did cement circulate (Y/N) * Provide details below*
Conductor	30"	20"	40'	New	106.5# K-55	N/A	Y
Surface	17- 1/2"	13- 3/8"	443'	New	48# H-40	N/A	Y
Coal							
Intermediate 1	12-1/4"	9-5/8"	2499'	New	36# J-55	N/A	Y
Intermediate 2							
Intermediate 3							
Production	8-3/4" & 8-1/2"	5-1/2"	13795'	New	20# P-110	N/A	Y
Tubing		2-3/8"	6659'		4.70# N-80	N/A	
Packer type and depth set		N/A					

Comment Details _____

CEMENT DATA	Class/Type of Cement	Number of Sacks	Slurry wt (ppg)	Yield (ft ³ /sks)	Volume (ft ³)	Cement Top (MD)	WOC (hrs)
Conductor	Class A	195 sx	15.6	1.18	38	0'	8 Hrs.
Surface	Class A	432 sx	15.6	1.18	308	0'	8 Hrs.
Coal							
Intermediate 1	Class A	918 sx	15.6	1.18	783	0'	8 Hrs.
Intermediate 2							
Intermediate 3							
Production	Class H	968 sx (Lead) 1225 sx (Tail)	14.5 Lead 15.2 Tail	1.30 Lead 1.88 Tail	2705	~500' into Intermediate Casing	8 Hrs.
Tubing							

Drillers TD (ft) 13795' MD, 6587' TVD

Loggers TD (ft) 13745'

Deepest formation penetrated Marcellus

Plug back to (ft) N/A

Plug back procedure N/A

Kick off depth (ft) 6106'

Check all wireline logs run caliper density deviated/directional induction
 neutron resistivity gamma ray temperature sonic

Well cored Yes No Conventional Sidewall Were cuttings collected Yes No

DESCRIBE THE CENTRALIZER PLACEMENT USED FOR EACH CASING STRING _____

Conductor- 0

Surface- 1 above guide shoe, 1 above insert float, 1 every 4th joint to surface

Intermediate- 1 above float joint, 1 above float collar, 1 every 4th joint to surface

Production- 1 above float joint, 1 below float collar, 1 every 3rd joint to top of cement

WAS WELL COMPLETED AS SHOT HOLE Yes No DETAILS _____

RECEIVED
Office of Oil and Gas

WAS WELL COMPLETED OPEN HOLE? Yes No DETAILS _____

AUG 03 2015

WERE TRACERS USED Yes No TYPE OF TRACER(S) USED _____

WV Department of
Environmental Protection
10/23/2015

API 47- 017 - 06415 Farm name McCloy, Alvadore, Jr., et ux Well number Hudkins Unit 1H

PERFORATION RECORD

Stage No.	Perforation date	Perforated from MD ft.	Perforated to MD ft.	Number of Perforations	Formation(s)
		*PLEASE SEE EXHIBIT 1			

Please insert additional pages as applicable.

STIMULATION INFORMATION PER STAGE

Complete a separate record for each stimulation stage.

Stage No.	Stimulations Date	Ave Pump Rate (BPM)	Ave Treatment Pressure (PSI)	Max Breakdown Pressure (PSI)	ISIP (PSI)	Amount of Proppant (lbs)	Amount of Water (bbls)	Amount of Nitrogen/other (units)	
		*PLEASE SEE EXHIBIT 2							

RECEIVED
Office of Oil and Gas
AUG 03 2015

Please insert additional pages as applicable.

API 47- 017 - 06415 Farm name McCloy, Alvadore, Jr., et ux Well number Hudkins Unit 1H

<u>PRODUCING FORMATION(S)</u>	<u>DEPTHS</u>	
<u>Marcellus</u>	<u>6444' (TOP)</u> TVD	<u>6752' (TOP)</u> MD
_____	_____	_____
_____	_____	_____
_____	_____	_____

Please insert additional pages as applicable.

GAS TEST Build up Drawdown Open Flow OIL TEST Flow Pump
 SHUT-IN PRESSURE Surface 3600 psi Bottom Hole --- psi DURATION OF TEST --- hrs
 OPEN FLOW Gas 9048 mcfpd Oil 23 bpd NGL --- bpd Water 0 bpd GAS MEASURED BY Estimated Orifice Pilot

LITHOLOGY/ FORMATION	TOP DEPTH IN FT NAME TVD	BOTTOM DEPTH IN FT TVD	TOP DEPTH IN FT MD	BOTTOM DEPTH IN FT MD	DESCRIBE ROCK TYPE AND RECORD QUANTITY AND TYPE OF FLUID (FRESHWATER, BRINE, OIL, GAS, H ₂ S, ETC)
	<u>0</u>		<u>0</u>		

***PLEASE SEE EXHIBIT 3**

Please insert additional pages as applicable.

Drilling Contractor Precision Drilling Company, LP
 Address 2640 Reach Rd. City Williamsport State PA Zip 17701

Logging Company STRC
 Address 1560 Good Hope Pike City Clarksburg State WV Zip 26301

Cementing Company Nabors Completion & Production Services, Co.
 Address 1650 Hackers Creek City Jane Lew State WV Zip 26378

Stimulating Company Baker Hughes
 Address 837 Philippi Pike City Clarksburg State WV Zip 26301

Please insert additional pages as applicable.

Completed by Kara Quackenbush Telephone 303-357-7233
 Signature [Signature] Title Permitting Agent Date 7/21/2015

EXHIBIT 1

Stage No.	Perforation Date	Perforated from MD ft.	Perforated to MD ft.	Number of Perforations	Formations
1	8-Dec-14	13,539	13,706	60	Marcellus
2	19-Jan-15	13,340	13,508	60	Marcellus
3	19-Jan-15	13,142	13,309	60	Marcellus
4	20-Jan-15	12,943	13,111	60	Marcellus
5	21-Jan-15	12,745	12,912	60	Marcellus
6	22-Jan-15	12,546	12,714	60	Marcellus
7	22-Jan-15	12,348	12,515	60	Marcellus
8	23-Jan-15	12,149	12,317	60	Marcellus
9	23-Jan-15	11,951	12,118	60	Marcellus
10	23-Jan-15	11,753	11,920	60	Marcellus
11	24-Jan-15	11,554	11,721	60	Marcellus
12	25-Jan-15	11,356	11,523	60	Marcellus
13	25-Jan-15	11,157	11,325	60	Marcellus
14	25-Jan-15	10,959	11,126	60	Marcellus
15	26-Jan-15	10,760	10,928	60	Marcellus
16	26-Jan-15	10,562	10,729	60	Marcellus
17	27-Jan-15	10,363	10,531	60	Marcellus
18	27-Jan-15	10,165	10,332	60	Marcellus
19	28-Jan-15	9,966	10,134	60	Marcellus
20	28-Jan-15	9,768	9,935	60	Marcellus
21	29-Jan-15	9,570	9,737	60	Marcellus
22	29-Jan-15	9,371	9,538	60	Marcellus
23	29-Jan-15	9,173	9,340	60	Marcellus
24	30-Jan-15	8,974	9,142	60	Marcellus
25	30-Jan-15	8,776	8,943	60	Marcellus
26	31-Jan-15	8,577	8,745	60	Marcellus
27	31-Jan-15	8,379	8,546	60	Marcellus
28	1-Feb-15	8,180	8,348	60	Marcellus
29	1-Feb-15	7,982	8,149	60	Marcellus
30	2-Feb-15	7,783	7,951	60	Marcellus
31	2-Feb-15	7,585	7,752	60	Marcellus
32	3-Feb-15	7,386	7,554	60	Marcellus
33	3-Feb-15	7,188	7,355	60	Marcellus
34	4-Feb-15	6,990	7,157	60	Marcellus
35	4-Feb-15	6,791	6,958	60	Marcellus

RECEIVED
Office of Oil and Gas

AUG 03 2015

WV Department of
Environmental Protection
10/28/2015

EXHIBIT 2

Stage No.	Stimulations Date	Avg Pump Rate	Avg Treatment Pressure (PSI)	Max Breakdown Pressure (PSI)	ISIP (PSI)	Amount of Proppant (lbs)	Amount of Water (bbls)	Amount of Nitrogen/ other (units)
1	19-Jan-15	64.1	6,576	0	4,115	236,355	6,746	N/A
2	19-Jan-15	63.0	6,451	6,106	3,924	249,058	6,893	N/A
3	20-Jan-15	60.0	6,490	5,612	4,925	202,642	6,930	N/A
4	21-Jan-15	62.0	6,311	5,283	5,150	247,599	6,508	N/A
5	22-Jan-15	64.0	6,441	5,517	3,660	246,806	6,457	N/A
6	22-Jan-15	63.0	6,444	5,630	5,279	247,609	6,498	N/A
7	23-Jan-15	64.0	6,339	5,602	4,591	247,595	6,378	N/A
8	23-Jan-15	63.0	6,455	5,715	4,980	246,898	6,458	N/A
9	23-Jan-15	64.0	6,608	5,574	5,126	244,681	6,348	N/A
10	24-Jan-15	63.0	6,521	5,767	5,265	248,141	6,392	N/A
11	24-Jan-15	63.0	6,521	5,767	5,265	248,141	6,392	N/A
12	25-Jan-15	64.0	6,449	5,657	5,097	243,703	6,327	N/A
13	25-Jan-15	64.0	6,324	5,500	4,864	246,334	6,335	N/A
14	26-Jan-15	63.0	6,458	5,586	5,342	248,371	6,288	N/A
15	27-Jan-15	63.0	6,458	5,629	5,415	248,626	6,286	N/A
16	27-Jan-15	69.0	6,837	6,221	4,950	246,623	6,327	N/A
17	27-Jan-15	64.0	6,620	5,603	5,433	248,002	6,255	N/A
18	27-Jan-15	64.0	6,620	5,752	5,454	246,959	6,404	N/A
19	28-Jan-15	65.2	6,325	5,631	5,441	247,219	6,251	N/A
20	29-Jan-15	62.6	6,216	5,620	5,271	218,680	5,994	N/A
21	29-Jan-15	69.0	6,489	5,442	5,318	241,365	6,126	N/A
22	31-Jan-15	68.0	6,808	5,588	6,017	249,047	6,228	N/A
23	30-Jan-15	66.0	6,365	5,730	4,169	246,528	6,267	N/A
24	30-Jan-15	67.0	6,497	5,621	5,528	245,055	6,159	N/A
25	31-Jan-15	67.0	6,497	5,933	5,074	225,222	6,105	N/A
26	31-Jan-15	66.0	6,531	5,820	4,894	245,744	6,180	N/A
27	1-Feb-15	66.0	6,531	5,981	5,462	246,922	6,315	N/A
28	1-Feb-15	67.0	6,299	6,103	4,975	245,767	6,114	N/A
29	2-Feb-15	67.0	6,299	5,422	5,378	242,919	6,163	N/A
30	2-Feb-15	67.0	6,282	5,902	5,482	246,381	6,066	N/A
31	3-Feb-15	63.0	6,123	5,765	5,367	197,665	6,626	N/A
32	3-Feb-15	63.0	6,123	5,522	4,572	229,979	5,882	N/A
33	4-Feb-15	63.0	6,123	5,767	5,309	239,528	5,878	N/A
34	4-Feb-15	64.0	6,046	5,403	4,476	246,007	5,937	N/A
35	4-Feb-15	64.0	6,046	6,509	4,940	246,487	5,919	N/A
	AVG=	64.5	6,415	5,551	5,043	8,454,658	220,432	TOTAL

RECEIVED
Office of Oil and Gas

AUG 03 2015

WV Department of
Environmental Protection
10/23/2015

EXHIBIT 3

LITHOLOGY/ FORMATION	TOP DEPTH (TVD)	BOTTOM DEPTH (TVD)	TOP DEPTH (MD)	BOTTOM DEPTH (MD)
	From Surface	From Surface	From Surface	From Surface
Fresh Water	332'	N/A	332'	N/A
Shale/ Sandstone	0	207	0	207
Shale/ Trace Coal	207	247	207	247
Sandstone	247	467	247	467
Shale/ Limestone	467	567	467	567
Sandstone	567	627	567	627
Shale/ Trace Limestone	627	787	627	787
Siltstone	787	812	787	812
Shale/ Limestone	812	967	812	967
Sandstone	967	1047	967	1047
Shale/ Limestone	1047	1147	1047	1147
Shale/ Trace Coal	1147	1187	1147	1187
Sandstone/ Trace Coal	1187	1247	1187	1247
Shale/ Trace Limestone	1247	1327	1247	1327
Sandstone/ Shale	1327	1427	1327	1427
Sandstone/ Coal	1427	1567	1427	1567
Shale/ Trace Coal	1567	1727	1567	1727
Siltstone/ Trace Coal	1727	1911	1727	1912
Big Lime	1911	2035	1912	2036
Big Injun	2035	2416	2036	2418
Gantz Sand	2416	2581	2418	2582
Fifty Foot Sandstone	2581	2673	2582	2674
Gordon	2673	2957	2674	2959
Fifth Sandstone	2957	3109	2959	3110
Bayard	3109	3417	3110	3418
Warren	3417	3792	3418	3794
Speechley	3792	4061	3794	4062
Baltown	4061	4495	4062	4496
Bradford	4495	4903	4496	4905
Benson	4903	5179	4905	5195
Alexander	5179	5336	5195	5364
Elk	5336	5815	5364	5885
Rhinestreet	5815	6106	5885	6204
Sycamore	6106	6265	6204	6395
Middlesex	6265	3379	6395	6573
Burkett	3379	6413	6573	6647
Tully	6413	6444	6647	6752
Marcellus	6444	NA	6752	NA

RECEIVED
Office of Oil and Gas

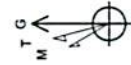
AUG 03 2015

WV Department of
Environmental Protection
10/23/2015

17.06415



Hudkins Unit 1H
Doddridge County WV
Northing: 14261474.32
Easting: 1673591.25
As Drilled



Azimuths to Grid North
 True North: -0.07°
 Magnetic North: -8.48°
 Magnetic Field
 Strength: 52239.5nT
 Dip Angle: 66.86°
 Date: 8/22/2014
 Model: BGGM2014

To convert Magnetic North to Grid, Subtract 8.48°
 To convert True North to Grid, Subtract 0.07°

PS23: 1055.GL * 19 KB @ 1074.0usft
 Gr: 1055.0

WELL DETAILS
 Ground Level: 1055.0
 +N/S: 0.0 +E/W: 0.0
 Northing: 14261474.32 Easting: 1673591.25
 Longitude: 16° 23' 57" 00" W Latitude: 57° 57' 59" W

Genie Lightfoot
 13-37, November 25 2014
 Scientific Drilling
 421 South Eagle Lane
 Oklahoma City, OK 73128

PROJECT DETAILS: Doddridge County WV
 Geodetic System: Universal Transverse Mercator (US Survey Feet)
 Datum: NAD 1927 (NADCON CONUS)
 Ellipsoid: Clarke 1866
 Zone: Zone 17N (84 W to 78 W)
 System Datum: Mean Sea Level

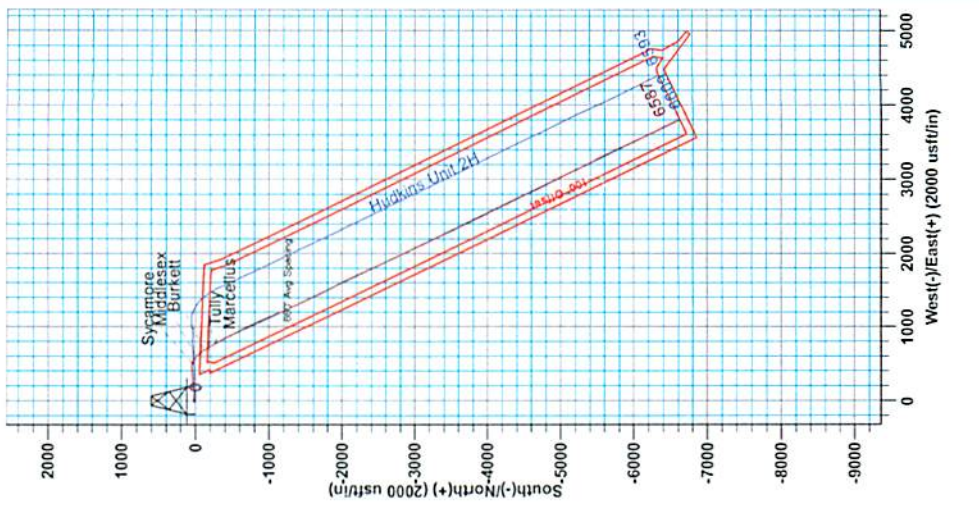
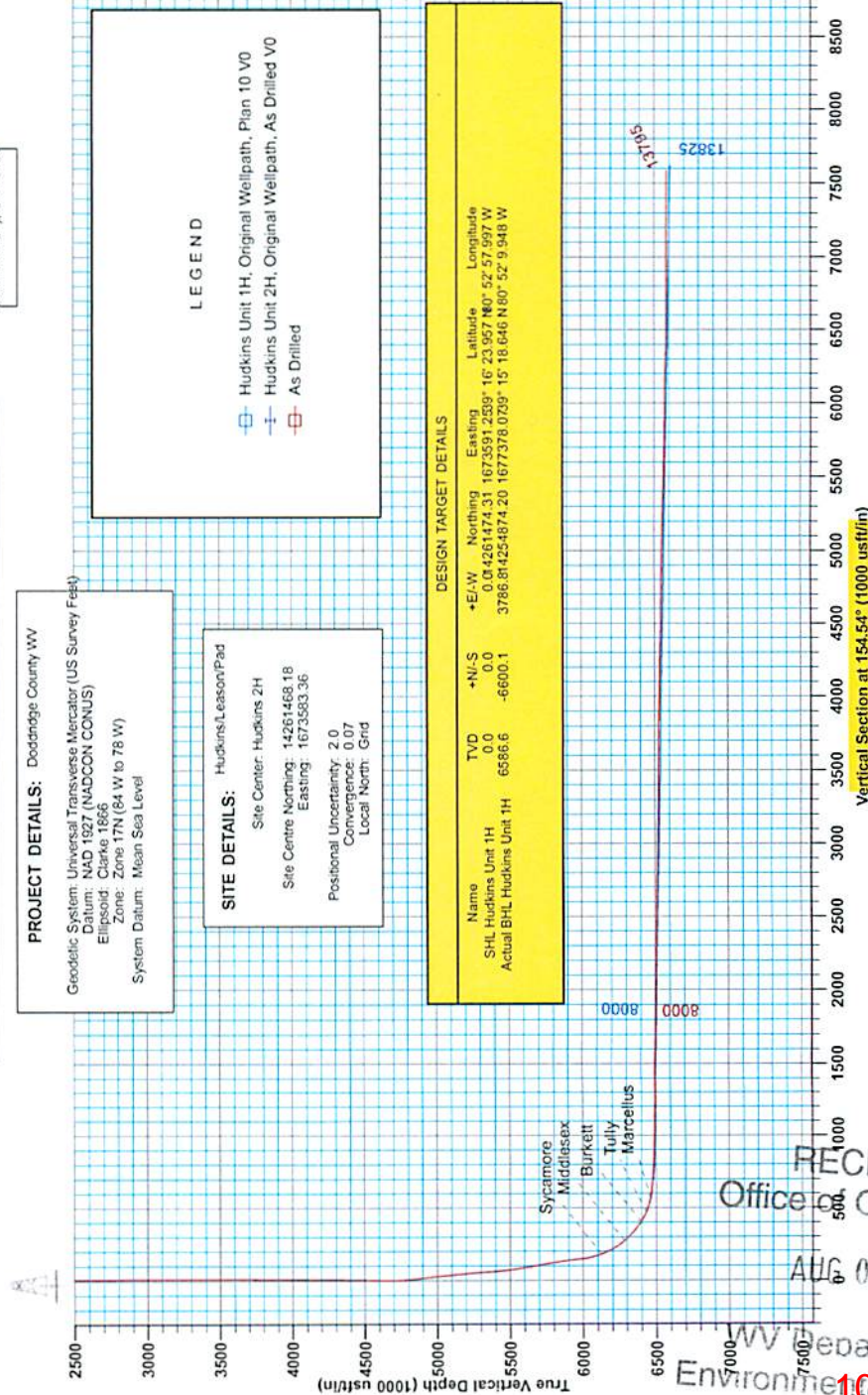
SITE DETAILS: Hudkins/Leason/Pad
 Site Center: Hudkins 2H
 Site Centre Northing: 14261468.18
 Easting: 1673583.36
 Positional Uncertainty: 2.0
 Convergence: 0.07
 Local North: Grid

LEGEND

 Hudkins Unit 1H, Original Wellpath, Plan 10 V0
 Hudkins Unit 2H, Original Wellpath, As Drilled V0
 As Drilled

DESIGN TARGET DETAILS

Name	+N/S	TVD	+E/W	Northing	Easting	Latitude	Longitude
SHL Hudkins Unit 1H	0.0	0.0	0.0	14261474.32	1673591.25	16° 23' 57" 00" W	57° 57' 59" W
Actual BHL Hudkins Unit 1H	-6600.1	6586.6	3786.8	14254674.20	1677376.029	15° 18' 04" 00" W	52° 09' 54" W



RECEIVED
 Office of Oil and Gas
 AUG 08 2015
 WV Department of
 Environmental Protection
 10/23/2015

17-06415



Antero Resources

Doddridge County WV
Hudkins/Leason/Pad
Hudkins Unit 1H
Original Wellpath

Design: As Drilled

EOW Completion Report

25 November, 2014



RECEIVED
Office of Oil and Gas
Scientific Drilling

AUG 03 2015

WV Department of
Environmental Protection
10/23/2015

Company:	Antero Resources	Local Co-ordinate Reference:	Well Hudkins Unit 1H
Project:	Doddridge County WV	TVD Reference:	P523: 1055 GL + 19 KB @ 1074.0usft
Site:	Hudkins/Leason/Pad	MD Reference:	P523: 1055 GL + 19 KB @ 1074.0usft
Well:	Hudkins Unit 1H	North Reference:	Grid
Wellbore:	Original Wellpath	Survey Calculation Method:	Minimum Curvature
Design:	As Drilled	Database:	Oklahoma District

Project	Doddridge County WV, McClellan District		
Map System:	Universal Transverse Mercator (US Survey Fee	System Datum:	Mean Sea Level
Geo Datum:	NAD 1927 (NADCON CONUS)		
Map Zone:	Zone 17N (84 W to 78 W)		

Site	Hudkins/Leason/Pad				
Site Position:	Northing:	14,261,468.18usft	Latitude:	39° 16' 23.897 N	
From: Map	Easting:	1,673,583.36usft	Longitude:	80° 52' 58.098 W	
Position Uncertainty:	2.0 usft	Slot Radius:	13-3/16"	Grid Convergence:	0.07 °

Well	Hudkins Unit 1H, Marcellus					
Well Position	+N/-S	0.0 usft	Northing:	14,261,474.32 usft	Latitude:	39° 16' 23.957 N
	+E/-W	0.0 usft	Easting:	1,673,591.25 usft	Longitude:	80° 52' 57.997 W
Position Uncertainty	2.0 usft	Wellhead Elevation:	1,074.0 usft	Ground Level:	1,055.0 usft	

Wellbore	Original Wellpath				
-----------------	-------------------	--	--	--	--

Magnetics	Model Name	Sample Date	Declination (°)	Dip Angle (°)	Field Strength (nT)
	BGGM2014	8/22/2014	-8.41	66.86	52,239

Design	As Drilled			
---------------	------------	--	--	--

Audit Notes:					
Version:	1.0	Phase:	ACTUAL	Tie On Depth:	0.0

Vertical Section:	Depth From (TVD) (usft)	+N/-S (usft)	+E/-W (usft)	Direction (°)
	0.0	0.0	0.0	154.54

Survey Program		Date	11/11/2014		
From (usft)	To (usft)	Survey (Wellbore)	Tool Name	Description	
25.0	5,900.1	Survey #8 Def Gyro to KOP Rerun (Origin:	SDI Standard Keeper	Scientific Drilling Intl. Standard Wireline Keeper	
5,900.1	13,795.0	Survey #9 SDI MWD (Original Wellpath)	SDI MWD	Scientific Drilling Intl. MWD - Standard ver 1.0.1	

MD (usft)	Inc (°)	Azi (azimuth) (°)	TVD (usft)	N/S (usft)	EW (usft)	V. Sec (usft)	DLeg (°/100usft)
0.0	0.00	0.00	0.0	0.0	0.0	0.0	0.00
25.0	0.13	36.59	25.0	0.0	0.0	0.0	0.52
50.0	0.27	36.59	50.0	0.1	0.1	0.1	0.56
75.0	0.40	36.59	75.0	0.2	0.2	-0.1	0.52
100.0	0.54	36.59	100.0	0.4	0.3	-0.2	0.56
125.0	0.58	35.86	125.0	0.6	0.4	-0.3	0.16
150.0	0.58	33.21	150.0	0.8	0.6	-0.5	0.11
175.0	0.55	29.30	175.0	1.0	0.7	-0.6	0.20
200.0	0.50	27.14	200.0	1.2	0.8	-0.7	0.22
225.0	0.32	11.79	225.0	1.4	0.9	-0.9	0.84
250.0	0.33	9.52	250.0	1.5	0.9	-1.0	0.07



EOW Completion Report



Company:	Antero Resources	Local Co-ordinate Reference:	Well Hudkins Unit 1H
Project:	Doddridge County WV	TVD Reference:	P523: 1055 GL + 19 KB @ 1074.0usft
Site:	Hudkins/Leason/Pad	MD Reference:	P523: 1055 GL + 19 KB @ 1074.0usft
Well:	Hudkins Unit 1H	North Reference:	Grid
Wellbore:	Original Wellpath	Survey Calculation Method:	Minimum Curvature
Design:	As Drilled	Database:	Oklahoma District

Survey									
MD (usft)	Inc (°)	Azi (azimuth) (°)	TVD (usft)	N/S (usft)	E/W (usft)	V. Sec (usft)	DLeg (°/100usft)		
275.0	0.36	22.12	275.0	1.6	0.9	-1.1	0.33		
300.0	0.41	31.12	300.0	1.8	1.0	-1.2	0.31		
325.0	0.23	46.60	325.0	1.9	1.1	-1.2	0.79		
350.0	0.28	44.06	350.0	2.0	1.2	-1.3	0.20		
375.0	0.26	50.08	375.0	2.1	1.3	-1.3	0.14		
400.0	0.18	33.19	400.0	2.1	1.3	-1.4	0.41		
425.0	0.13	23.98	425.0	2.2	1.4	-1.4	0.22		
450.0	0.18	27.86	450.0	2.2	1.4	-1.4	0.20		
475.0	0.20	30.44	475.0	2.3	1.4	-1.5	0.09		
500.0	0.08	359.61	500.0	2.4	1.4	-1.5	0.55		
525.0	0.17	21.33	525.0	2.4	1.5	-1.6	0.40		
550.0	0.18	40.21	550.0	2.5	1.5	-1.6	0.23		
575.0	0.17	35.47	575.0	2.6	1.5	-1.6	0.07		
600.0	0.12	37.73	600.0	2.6	1.6	-1.7	0.20		
625.0	0.09	2.59	625.0	2.6	1.6	-1.7	0.28		
650.0	0.09	354.53	650.0	2.7	1.6	-1.7	0.05		
675.0	0.09	340.49	675.0	2.7	1.6	-1.8	0.09		
700.0	0.14	356.45	700.0	2.8	1.6	-1.8	0.24		
725.0	0.09	290.91	725.0	2.8	1.6	-1.9	0.53		
750.0	0.10	330.07	750.0	2.8	1.5	-1.9	0.26		
775.0	0.08	342.11	775.0	2.9	1.5	-1.9	0.11		
800.0	0.12	301.76	800.0	2.9	1.5	-2.0	0.31		
825.0	0.16	307.90	825.0	2.9	1.4	-2.0	0.17		
850.0	0.15	325.97	850.0	3.0	1.4	-2.1	0.20		
875.0	0.21	344.28	875.0	3.1	1.4	-2.2	0.33		
900.0	0.25	336.98	900.0	3.1	1.3	-2.3	0.20		
925.0	0.30	333.64	925.0	3.3	1.3	-2.4	0.21		
950.0	0.30	338.89	950.0	3.4	1.2	-2.5	0.11		
975.0	0.33	336.59	975.0	3.5	1.2	-2.7	0.13		
1,000.0	0.35	344.81	1,000.0	3.6	1.1	-2.8	0.21		
1,025.0	0.38	328.45	1,025.0	3.8	1.1	-3.0	0.43		
1,050.0	0.41	338.00	1,050.0	3.9	1.0	-3.1	0.29		
1,075.0	0.44	329.95	1,075.0	4.1	0.9	-3.3	0.27		
1,100.0	0.44	333.94	1,100.0	4.3	0.8	-3.5	0.12		
1,125.0	0.46	327.74	1,125.0	4.4	0.7	-3.7	0.21		
1,150.0	0.44	330.32	1,150.0	4.6	0.6	-3.9	0.11		
1,175.0	0.52	326.47	1,175.0	4.8	0.5	-4.1	0.34		
1,200.0	0.52	322.99	1,200.0	5.0	0.4	-4.3	0.13		
1,225.0	0.55	322.73	1,225.0	5.2	0.2	-4.6	0.12		
1,250.0	0.62	326.11	1,250.0	5.4	0.1	-4.8	0.31		
1,275.0	0.57	310.23	1,275.0	5.6	-0.1	-5.1	0.69		
1,300.0	0.59	320.23	1,300.0	5.7	-0.3	-5.3	0.41		
1,325.0	0.53	311.94	1,325.0	5.9	-0.4	-5.5	0.40		
1,350.0	0.59	319.05	1,350.0	6.1	-0.6	-5.8	0.37		

RECEIVED
Office of Oil and Gas
AUG 03 2015
WV Department of Environmental Protection

Company:	Antero Resources	Local Co-ordinate Reference:	Well Hudkins Unit 1H
Project:	Doddridge County WV	TVD Reference:	P523: 1055 GL + 19 KB @ 1074.0usft
Site:	Hudkins/Leason/Pad	MD Reference:	P523: 1055 GL + 19 KB @ 1074.0usft
Well:	Hudkins Unit 1H	North Reference:	Grid
Wellbore:	Original Wellpath	Survey Calculation Method:	Minimum Curvature
Design:	As Drilled	Database:	Oklahoma District

Survey									
MD (usft)	Inc (°)	Azi (azimuth) (°)	TVD (usft)	N/S (usft)	E/W (usft)	V. Sec (usft)	DLeg (°/100usft)		
1,375.0	0.64	311.92	1,375.0	6.3	-0.8	-6.0	0.37		
1,400.0	0.62	312.83	1,400.0	6.5	-1.0	-6.3	0.09		
1,425.0	0.60	309.83	1,425.0	6.6	-1.2	-6.5	0.15		
1,450.0	0.61	318.68	1,450.0	6.8	-1.4	-6.8	0.38		
1,475.0	0.50	321.86	1,475.0	7.0	-1.5	-7.0	0.46		
1,500.0	0.61	321.26	1,500.0	7.2	-1.7	-7.2	0.44		
1,525.0	0.60	326.40	1,525.0	7.4	-1.8	-7.5	0.22		
1,550.0	0.65	330.49	1,550.0	7.7	-2.0	-7.8	0.27		
1,575.0	0.64	323.04	1,575.0	7.9	-2.1	-8.0	0.34		
1,600.0	0.67	325.74	1,600.0	8.1	-2.3	-8.3	0.17		
1,625.0	0.66	328.09	1,625.0	8.4	-2.5	-8.6	0.12		
1,650.0	0.78	316.31	1,650.0	8.6	-2.7	-8.9	0.76		
1,675.0	0.76	314.17	1,675.0	8.8	-2.9	-9.2	0.14		
1,700.0	0.76	318.71	1,700.0	9.1	-3.1	-9.5	0.24		
1,725.0	0.51	322.93	1,725.0	9.3	-3.3	-9.8	1.02		
1,750.0	0.80	69.35	1,749.9	9.5	-3.2	-9.9	4.25		
1,775.0	1.41	82.36	1,774.9	9.6	-2.7	-9.8	2.62		
1,800.0	2.59	92.18	1,799.9	9.6	-1.9	-9.4	4.90		
1,825.0	3.20	91.92	1,824.9	9.5	-0.6	-8.9	2.44		
1,850.0	4.25	91.84	1,849.8	9.5	1.0	-8.1	4.20		
1,875.0	4.38	92.05	1,874.8	9.4	2.9	-7.2	0.52		
1,900.0	4.51	93.04	1,899.7	9.3	4.8	-6.3	0.60		
1,925.0	4.42	101.02	1,924.6	9.1	6.8	-5.3	2.51		
1,950.0	4.35	110.87	1,949.5	8.6	8.6	-4.0	3.02		
1,975.0	4.27	122.55	1,974.5	7.7	10.3	-2.6	3.52		
2,000.0	4.26	126.28	1,999.4	6.7	11.8	-1.0	1.11		
2,025.0	4.29	126.51	2,024.3	5.6	13.3	0.7	0.14		
2,050.0	4.41	124.68	2,049.3	4.5	14.8	2.3	0.73		
2,075.0	4.35	123.84	2,074.2	3.4	16.4	4.0	0.35		
2,100.0	4.04	122.86	2,099.1	2.4	17.9	5.6	1.27		
2,125.0	3.36	116.15	2,124.1	1.6	19.3	6.9	3.22		
2,150.0	2.09	91.41	2,149.0	1.3	20.5	7.7	6.81		
2,175.0	1.70	59.77	2,174.0	1.4	21.2	7.8	4.40		
2,200.0	1.82	33.86	2,199.0	1.9	21.8	7.6	3.19		
2,225.0	1.98	29.22	2,224.0	2.7	22.2	7.2	0.89		
2,250.0	2.07	30.50	2,249.0	3.4	22.6	6.2	0.40		
2,275.0	2.07	33.53	2,274.0	4.2	23.1	5.8	0.44		
2,300.0	1.96	43.81	2,299.0	4.9	23.7	5.6	1.51		
2,325.0	1.89	55.91	2,323.9	5.4	24.3	5.6	1.65		
2,350.0	1.82	64.05	2,348.9	5.8	25.0	5.6	1.09		
2,375.0	1.57	72.90	2,373.9	6.1	25.7	5.5	1.45		
2,400.0	1.44	83.25	2,398.9	6.2	26.3	5.7	1.20		
2,425.0	1.13	133.94	2,423.9	6.1	26.8	6.0	1.54		
2,450.0	1.32	145.72	2,448.9	5.7	27.2	6.5	1.26		
2,475.0	1.28	145.90	2,473.9	5.2	27.5	7.1	0.16		

RECEIVED
 Office of Oil and Gas
 AUG 03 2015
 WV Department of
 Environmental Protection

17-0645



EOW Completion Report



Company:	Antero Resources	Local Co-ordinate Reference:	Well Hudkins Unit 1H
Project:	Doddridge County WV	TVD Reference:	P523: 1055 GL + 19 KB @ 1074.0usft
Site:	Hudkins/Leason/Pad	MD Reference:	P523: 1055 GL + 19 KB @ 1074.0usft
Well:	Hudkins Unit 1H	North Reference:	Grid
Wellbore:	Original Wellpath	Survey Calculation Method:	Minimum Curvature
Design:	As Drilled	Database:	Oklahoma District

Survey								
MD (usft)	Inc (°)	Azi (azimuth) (°)	TVD (usft)	N/S (usft)	EW (usft)	V. Sec (usft)	DLeg (°/100usft)	
2,500.0	1.26	145.91	2,498.9	4.8	27.8	7.7	0.08	
2,525.0	1.25	148.54	2,523.9	4.3	28.1	8.2	0.23	
2,550.0	1.12	147.95	2,548.9	3.9	28.4	8.7	0.52	
2,575.0	0.86	150.63	2,573.9	3.5	28.6	9.1	1.06	
2,600.0	0.79	153.00	2,598.9	3.2	28.8	9.5	0.31	
2,625.0	0.79	164.73	2,623.9	2.8	28.9	9.8	0.65	
2,650.0	0.86	158.89	2,648.9	2.5	29.0	10.2	0.44	
2,675.0	0.81	161.31	2,673.9	2.2	29.1	10.6	0.24	
2,700.0	0.75	156.75	2,698.9	1.8	29.2	10.9	0.35	
2,725.0	0.65	158.74	2,723.9	1.6	29.3	11.2	0.41	
2,750.0	0.51	172.31	2,748.9	1.3	29.4	11.5	0.78	
2,775.0	0.42	171.75	2,773.9	1.1	29.4	11.6	0.36	
2,800.0	0.41	182.62	2,798.9	0.9	29.5	11.8	0.32	
2,825.0	0.29	198.58	2,823.9	0.8	29.4	11.9	0.61	
2,850.0	0.31	210.26	2,848.9	0.7	29.4	12.0	0.26	
2,875.0	0.36	215.93	2,873.9	0.5	29.3	12.1	0.24	
2,900.0	0.35	212.49	2,898.9	0.4	29.2	12.2	0.09	
2,925.0	0.38	216.20	2,923.9	0.3	29.1	12.3	0.15	
2,950.0	0.36	211.55	2,948.9	0.2	29.0	12.3	0.14	
2,975.0	0.31	214.68	2,973.9	0.0	28.9	12.4	0.21	
3,000.0	0.38	224.17	2,998.9	-0.1	28.9	12.5	0.36	
3,025.0	0.37	227.06	3,023.9	-0.2	28.7	12.5	0.09	
3,050.0	0.18	250.91	3,048.9	-0.3	28.6	12.5	0.87	
3,075.0	0.45	246.29	3,073.9	-0.3	28.5	12.5	1.08	
3,100.0	0.47	244.04	3,098.9	-0.4	28.3	12.5	0.11	
3,125.0	0.48	253.83	3,123.9	-0.5	28.1	12.5	0.33	
3,150.0	0.43	263.86	3,148.9	-0.5	27.9	12.5	0.38	
3,175.0	0.44	267.61	3,173.9	-0.5	27.8	12.4	0.12	
3,200.0	0.37	272.62	3,198.9	-0.5	27.6	12.3	0.31	
3,225.0	0.39	265.03	3,223.9	-0.5	27.4	12.3	0.22	
3,250.0	0.34	282.80	3,248.9	-0.5	27.3	12.2	0.49	
3,275.0	0.27	286.44	3,273.9	-0.5	27.1	12.1	0.29	
3,300.0	0.39	289.71	3,298.8	-0.4	27.0	12.0	0.49	
3,325.0	0.30	286.14	3,323.8	-0.4	26.8	11.9	0.37	
3,350.0	0.30	293.63	3,348.8	-0.4	26.7	11.8	0.16	
3,375.0	0.31	293.53	3,373.8	-0.3	26.6	11.7	0.04	
3,400.0	0.41	291.34	3,398.8	-0.2	26.5	11.6	0.40	
3,425.0	0.40	297.86	3,423.8	-0.2	26.3	11.5	0.19	
3,450.0	0.45	293.56	3,448.8	-0.1	26.1	11.3	0.24	
3,475.0	0.48	289.96	3,473.8	0.0	25.9	11.2	0.17	
3,500.0	0.42	298.42	3,498.8	0.1	25.8	11.0	0.36	
3,525.0	0.44	294.14	3,523.8	0.1	25.6	10.9	0.15	
3,550.0	0.40	283.67	3,548.8	0.2	25.4	10.7	0.35	
3,575.0	0.42	277.10	3,573.8	0.2	25.2	10.6	0.20	

RECEIVED
Office of Oil and Gas
AUG 03 2017
West Virginia Department of Environmental Protection

Company:	Antero Resources	Local Co-ordinate Reference:	Well Hudkins Unit 1H
Project:	Doddridge County WV	TVD Reference:	P523: 1055 GL + 19 KB @ 1074.0usft
Site:	Hudkins/Leason/Pad	MD Reference:	P523: 1055 GL + 19 KB @ 1074.0usft
Well:	Hudkins Unit 1H	North Reference:	Grid
Wellbore:	Original Well/path	Survey Calculation Method:	Minimum Curvature
Design:	As Drilled	Database:	Oklahoma District

Survey								
MD (usft)	Inc (°)	Azi (azimuth) (°)	TVD (usft)	N/S (usft)	E/W (usft)	V. Sec (usft)	DLeg (°/100usft)	
3,600.0	0.33	278.26	3,598.8	0.3	25.1	10.5	0.36	
3,625.0	0.24	286.56	3,623.8	0.3	25.0	10.5	0.40	
3,650.0	0.26	304.30	3,648.8	0.3	24.9	10.4	0.32	
3,675.0	0.32	290.09	3,673.8	0.4	24.8	10.3	0.37	
3,700.0	0.29	295.39	3,698.8	0.4	24.6	10.2	0.16	
3,725.0	0.37	288.16	3,723.8	0.5	24.5	10.1	0.36	
3,750.0	0.42	298.30	3,748.8	0.6	24.3	10.0	0.34	
3,775.0	0.42	283.71	3,773.8	0.6	24.2	9.8	0.43	
3,800.0	0.43	279.01	3,798.8	0.7	24.0	9.7	0.15	
3,825.0	0.46	275.89	3,823.8	0.7	23.8	9.6	0.15	
3,850.0	0.31	275.70	3,848.8	0.7	23.6	9.5	0.60	
3,875.0	0.27	285.02	3,873.8	0.7	23.5	9.4	0.25	
3,900.0	0.35	297.89	3,898.8	0.8	23.4	9.3	0.42	
3,925.0	0.34	322.87	3,923.8	0.9	23.3	9.2	0.60	
3,950.0	0.31	318.03	3,948.8	1.0	23.2	9.1	0.16	
3,975.0	0.50	316.53	3,973.8	1.1	23.1	8.9	0.76	
4,000.0	0.53	316.95	3,998.8	1.3	22.9	8.7	0.12	
4,025.0	0.52	319.38	4,023.8	1.4	22.7	8.5	0.10	
4,050.0	0.42	316.75	4,048.8	1.6	22.6	8.3	0.41	
4,075.0	0.59	318.00	4,073.8	1.8	22.5	8.1	0.68	
4,100.0	0.35	326.14	4,098.8	1.9	22.3	7.9	0.99	
4,125.0	0.43	313.28	4,123.8	2.0	22.2	7.7	0.47	
4,150.0	0.43	317.29	4,148.8	2.2	22.1	7.5	0.12	
4,175.0	0.47	330.88	4,173.8	2.3	22.0	7.3	0.45	
4,200.0	0.56	324.82	4,198.8	2.5	21.9	7.1	0.42	
4,225.0	0.52	323.36	4,223.8	2.7	21.7	6.9	0.17	
4,250.0	0.70	326.74	4,248.8	2.9	21.6	6.6	0.73	
4,275.0	0.74	317.64	4,273.8	3.2	21.4	6.3	0.48	
4,300.0	0.83	319.15	4,298.8	3.4	21.1	6.0	0.37	
4,325.0	0.87	313.33	4,323.8	3.7	20.9	5.6	0.38	
4,350.0	0.88	313.29	4,348.8	4.0	20.6	5.3	0.04	
4,375.0	0.93	311.02	4,373.8	4.2	20.3	4.9	0.25	
4,400.0	0.84	304.34	4,398.8	4.5	20.0	4.6	0.55	
4,425.0	0.91	309.75	4,423.8	4.7	19.7	4.2	0.43	
4,450.0	0.86	312.93	4,448.8	5.0	19.4	3.9	0.28	
4,475.0	0.96	315.73	4,473.8	5.2	19.1	3.6	0.44	
4,500.0	1.05	313.88	4,498.8	5.5	18.8	3.3	0.38	
4,525.0	1.09	310.18	4,523.8	5.9	18.5	2.7	0.32	
4,550.0	1.17	310.73	4,548.8	6.2	18.1	2.2	0.32	
4,575.0	1.04	308.37	4,573.8	6.5	17.7	1.8	0.55	
4,600.0	1.26	311.43	4,598.8	6.8	17.4	1.3	0.91	
4,625.0	1.23	301.54	4,623.8	7.1	16.9	0.8	0.87	
4,650.0	1.21	303.26	4,648.8	7.4	16.5	0.4	0.17	
4,675.0	1.09	300.05	4,673.8	7.7	16.0	0.0	0.54	

RECEIVED
 Office of Oil and Gas
 AUG 03 05
 WV Department of
 Environmental Protection

17-06415



EOW Completion Report



Company:	Antero Resources	Local Co-ordinate Reference:	Well Hudkins Unit 1H
Project:	Doddridge County WV	TVD Reference:	P523: 1055 GL + 19 KB @ 1074.0usft
Site:	Hudkins/Leason/Pad	MD Reference:	P523: 1055 GL + 19 KB @ 1074.0usft
Well:	Hudkins Unit 1H	North Reference:	Grid
Wellbore:	Original Wellpath	Survey Calculation Method:	Minimum Curvature
Design:	As Drilled	Database:	Oklahoma District

Survey

MD (usft)	Inc (°)	Azi (azimuth) (°)	TVD (usft)	N/S (usft)	EW (usft)	V. Sec (usft)	DLeg (°/100usft)
4,700.0	0.63	245.52	4,698.8	7.7	15.7	-0.2	3.55
4,725.0	1.25	175.24	4,723.8	7.4	15.6	0.0	4.78
4,750.0	2.29	150.71	4,748.7	6.7	15.9	0.8	5.06
4,775.0	3.56	136.91	4,773.7	5.7	16.6	2.0	5.77
4,800.0	4.69	129.81	4,798.6	4.5	18.0	3.7	4.95
4,825.0	5.96	123.14	4,823.5	3.1	19.8	5.7	5.64
4,850.0	7.29	117.85	4,848.4	1.7	22.3	8.1	5.85
4,875.0	8.35	113.11	4,873.1	0.2	25.4	10.7	4.96
4,900.0	10.01	107.22	4,897.8	-1.1	29.1	13.6	7.62
4,925.0	11.43	103.52	4,922.4	-2.4	33.6	16.6	6.31
4,950.0	12.67	98.50	4,946.8	-3.3	38.7	19.7	6.49
4,975.0	13.76	93.17	4,971.2	-3.9	44.4	22.6	6.54
5,000.0	14.76	88.45	4,995.4	-4.0	50.6	25.4	6.13
5,025.0	15.42	83.71	5,019.5	-3.5	57.1	27.7	5.60
5,050.0	16.22	80.97	5,043.6	-2.6	63.8	29.8	4.38
5,075.0	16.80	82.17	5,067.6	-1.6	70.8	31.9	2.69
5,100.0	17.49	82.55	5,091.4	-0.6	78.2	34.2	2.80
5,125.0	18.61	82.43	5,115.2	0.4	85.8	36.5	4.48
5,150.0	20.03	81.62	5,138.8	1.5	94.0	39.0	5.78
5,175.0	21.04	80.86	5,162.2	2.9	102.7	41.5	4.18
5,200.0	21.93	80.02	5,185.5	4.4	111.7	44.0	3.77
5,225.0	22.75	78.65	5,208.6	6.2	121.1	46.5	3.89
5,250.0	22.98	77.14	5,231.6	8.2	130.6	48.7	2.52
5,275.0	23.22	76.01	5,254.6	10.5	140.1	50.8	2.02
5,300.0	22.83	74.64	5,277.6	13.0	149.5	52.6	2.65
5,325.0	22.66	73.19	5,300.7	15.6	158.8	54.2	2.34
5,350.0	22.15	71.83	5,323.8	18.5	167.9	55.5	2.91
5,375.0	22.15	72.48	5,347.0	21.4	176.9	56.7	0.98
5,400.0	22.03	74.35	5,370.1	24.1	185.9	58.2	2.85
5,425.0	21.99	76.64	5,393.3	26.4	195.0	60.0	3.44
5,450.0	22.25	78.33	5,416.5	28.5	204.2	62.1	2.75
5,475.0	22.42	79.51	5,439.6	30.3	213.5	64.4	1.92
5,500.0	22.68	79.75	5,462.7	32.0	222.9	66.9	1.10
5,525.0	22.31	80.07	5,485.8	33.7	232.3	69.5	1.56
5,550.0	22.39	80.91	5,508.9	35.3	241.7	72.1	1.32
5,575.0	22.31	82.33	5,532.0	36.6	251.1	74.9	2.18
5,600.0	22.64	83.85	5,555.1	37.8	260.6	77.9	2.67
5,625.0	22.79	85.50	5,578.2	38.7	270.2	81.2	2.62
5,650.0	22.98	87.06	5,601.2	39.3	279.9	84.8	2.54
5,675.0	23.27	88.44	5,624.2	39.7	289.7	88.7	2.46
5,700.0	23.48	89.44	5,647.2	39.9	299.6	92.8	1.80
5,725.0	23.82	89.65	5,670.1	40.0	309.7	97.0	1.40
5,750.0	23.56	89.08	5,693.0	40.1	319.7	101.3	1.39
5,775.0	24.19	88.42	5,715.8	40.3	329.8	105.4	2.74

RECEIVED
Office of Oil and Gas
AUG 28 2014
WV Department of Environmental Protection

17-06415



EOW Completion Report



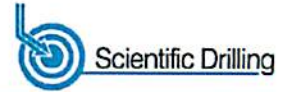
Company:	Antero Resources	Local Co-ordinate Reference:	Well Hudkins Unit 1H
Project:	Doddrige County WV	TVD Reference:	P523: 1055 GL + 19 KB @ 1074.0usft
Site:	Hudkins/Leason/Pad	MD Reference:	P523: 1055 GL + 19 KB @ 1074.0usft
Well:	Hudkins Unit 1H	North Reference:	Grid
Wellbore:	Original Wellpath	Survey Calculation Method:	Minimum Curvature
Design:	As Drilled	Database:	Oklahoma District

Survey								
MD (usft)	Inc (°)	Azi (azimuth) (°)	TVD (usft)	N/S (usft)	E/W (usft)	V. Sec (usft)	DLeg (°/100usft)	
5,800.0	23.82	87.67	5,738.7	40.6	340.0	109.5	1.92	
5,825.0	23.62	86.84	5,761.5	41.1	350.0	113.3	1.56	
5,850.0	23.23	86.09	5,784.5	41.7	360.0	117.1	1.96	
5,875.0	23.40	85.82	5,807.4	42.4	369.8	120.7	0.80	
5,900.1	23.57	85.57	5,830.4	43.2	379.8	124.3	0.79	
5,973.0	23.14	83.00	5,897.4	46.1	408.6	134.0	1.52	
6,016.0	22.84	80.64	5,937.0	48.4	425.2	139.0	2.25	
6,046.0	22.60	80.39	5,964.6	50.3	436.6	142.2	0.86	
6,076.0	23.11	82.03	5,992.3	52.1	448.1	145.6	2.72	
6,106.0	23.51	88.54	6,019.9	53.1	459.9	149.8	8.69	
6,136.0	24.06	93.58	6,047.3	52.9	472.0	155.2	7.02	
6,166.0	25.74	102.35	6,074.5	51.1	484.5	162.1	13.51	
6,196.0	27.27	108.29	6,101.4	47.5	497.4	170.9	10.20	
6,223.0	27.54	113.06	6,125.3	43.2	509.0	179.8	8.18	
Sycamore								
6,226.0	27.58	113.58	6,128.0	42.6	510.3	180.9	8.18	
6,256.0	27.28	115.10	6,154.6	36.9	522.9	191.4	2.54	
6,285.0	29.84	117.73	6,180.1	30.7	535.3	202.4	9.83	
6,315.0	32.32	123.53	6,205.8	22.8	548.6	215.2	12.95	
6,345.0	35.90	126.79	6,230.6	13.1	562.3	229.9	13.40	
6,375.0	38.76	129.85	6,254.5	1.8	576.6	246.2	11.36	
6,405.0	42.15	132.62	6,277.3	-11.0	591.2	264.1	12.79	
6,414.0	43.00	133.37	6,283.9	-15.2	595.6	269.7	11.01	
Middlesex								
6,435.0	45.00	135.04	6,299.1	-25.3	606.1	283.4	11.01	
6,464.0	47.15	137.65	6,319.2	-40.4	620.5	303.3	9.85	
6,495.0	49.55	141.19	6,339.8	-58.0	635.6	325.6	11.52	
6,525.0	51.88	143.66	6,358.8	-76.4	649.7	348.3	10.05	
6,555.0	54.17	144.63	6,376.8	-95.9	663.7	371.9	8.06	
6,585.0	56.92	146.13	6,393.8	-116.2	677.8	396.3	10.05	
6,592.0	57.72	146.37	6,397.6	-121.1	681.1	402.1	11.78	
Burkett								
6,615.0	60.35	147.12	6,409.4	-137.6	691.9	421.7	11.78	
6,644.0	63.58	148.05	6,423.0	-159.2	705.6	447.1	11.49	
6,666.0	66.37	148.45	6,432.3	-176.2	716.1	466.9	12.77	
Tully								
6,674.0	67.38	148.59	6,435.5	-182.4	719.9	474.2	12.77	
6,704.0	71.24	149.09	6,446.1	-206.5	734.4	502.1	12.96	
6,734.0	75.16	149.49	6,454.7	-231.1	749.1	530.7	13.13	
6,764.0	78.37	150.79	6,461.6	-256.5	763.6	559.8	11.50	
6,771.0	78.91	150.90	6,463.0	-262.5	767.0	566.7	7.85	
Marcellus								
6,790.0	80.37	151.21	6,466.4	-278.8	776.0	585.3	7.85	
6,824.0	82.66	151.74	6,471.4	-308.4	792.1	618.9	6.91	
6,854.0	84.43	152.61	6,474.8	-334.7	806.0	648.7	6.57	

RECEIVED
Office of Oil and Gas
All 03 05
WV Department of Environmental Protection



EOW Completion Report



Company:	Antero Resources	Local Co-ordinate Reference:	Well Hudkins Unit 1H
Project:	Doddridge County WV	TVD Reference:	P523: 1055 GL + 19 KB @ 1074.0usft
Site:	Hudkins/Leason/Pad	MD Reference:	P523: 1055 GL + 19 KB @ 1074.0usft
Well:	Hudkins Unit 1H	North Reference:	Grid
Wellbore:	Original Wellpath	Survey Calculation Method:	Minimum Curvature
Design:	As Drilled	Database:	Oklahoma District

Survey								
MD (usft)	Inc (°)	Azi (azimuth) (°)	TVD (usft)	N/S (usft)	E/W (usft)	V. Sec (usft)	DLeg (°/100usft)	
6,884.0	86.05	152.76	6,477.3	-361.3	819.7	678.6	5.42	
6,914.0	86.93	153.05	6,479.1	-387.9	833.3	708.5	3.09	
6,944.0	86.93	153.22	6,480.7	-414.7	846.9	738.5	0.57	
6,974.0	87.01	152.75	6,482.3	-441.4	860.5	768.4	1.59	
7,004.0	87.03	152.18	6,483.9	-467.9	874.3	798.3	1.90	
7,034.0	87.05	151.56	6,485.4	-494.3	888.5	828.3	2.06	
7,062.0	87.07	151.74	6,486.9	-519.0	901.7	856.2	0.65	
7,093.0	87.31	152.66	6,488.4	-546.3	916.2	887.1	3.06	
7,152.0	88.49	154.65	6,490.5	-599.2	942.3	946.1	3.92	
7,242.0	88.05	153.50	6,493.3	-680.1	981.7	1,036.0	1.37	
7,331.0	88.89	154.59	6,495.6	-760.1	1,020.6	1,125.0	1.55	
7,421.0	88.70	153.65	6,497.5	-841.0	1,059.9	1,215.0	1.07	
7,511.0	89.60	157.03	6,498.9	-922.8	1,097.4	1,304.9	3.89	
7,600.0	89.73	156.75	6,499.4	-1,004.7	1,132.4	1,393.9	0.35	
7,690.0	89.70	156.49	6,499.8	-1,087.3	1,168.1	1,483.8	0.29	
7,785.0	89.80	156.96	6,500.2	-1,174.5	1,205.6	1,578.7	0.51	
7,880.0	88.66	154.54	6,501.5	-1,261.1	1,244.6	1,673.7	2.82	
7,975.0	89.57	155.46	6,503.0	-1,347.2	1,284.8	1,768.7	1.36	
8,069.0	89.36	155.80	6,503.9	-1,432.8	1,323.6	1,862.7	0.43	
8,164.0	89.20	154.97	6,505.1	-1,519.2	1,363.1	1,957.6	0.89	
8,259.0	89.03	154.85	6,506.5	-1,605.2	1,403.4	2,052.6	0.22	
8,354.0	89.06	154.94	6,508.1	-1,691.2	1,443.7	2,147.6	0.10	
8,449.0	88.20	152.36	6,510.4	-1,776.3	1,485.8	2,242.6	2.86	
8,543.0	89.46	153.55	6,512.3	-1,860.0	1,528.6	2,336.5	1.84	
8,639.0	88.72	151.74	6,513.8	-1,945.3	1,572.7	2,432.4	2.04	
8,734.0	89.53	154.13	6,515.3	-2,029.9	1,615.9	2,527.4	2.66	
8,823.0	89.03	155.12	6,516.4	-2,110.3	1,654.0	2,616.4	1.25	
8,913.0	89.00	154.58	6,517.9	-2,191.7	1,692.3	2,706.4	0.60	
9,002.0	89.60	154.92	6,519.0	-2,272.2	1,730.2	2,795.4	0.77	
9,092.0	89.13	154.37	6,520.0	-2,353.5	1,768.8	2,885.3	0.80	
9,181.0	88.72	154.73	6,521.7	-2,433.9	1,807.0	2,974.3	0.61	
9,271.0	89.03	155.51	6,523.5	-2,515.5	1,844.9	3,064.3	0.93	
9,360.0	89.63	155.86	6,524.5	-2,596.6	1,881.5	3,153.3	0.78	
9,450.0	89.19	155.26	6,525.4	-2,678.6	1,918.8	3,243.3	0.83	
9,540.0	89.36	154.95	6,526.6	-2,760.2	1,956.6	3,333.2	0.39	
9,629.0	89.43	154.56	6,527.5	-2,840.7	1,994.6	3,422.2	0.45	
9,719.0	89.23	154.22	6,528.6	-2,921.8	2,033.5	3,512.2	0.44	
9,807.0	89.03	154.30	6,529.9	-3,001.1	2,071.7	3,600.2	0.24	
9,897.0	90.30	156.16	6,530.4	-3,082.8	2,109.4	3,690.2	2.50	
9,987.0	90.57	156.12	6,529.7	-3,165.1	2,145.8	3,780.2	0.30	
10,076.0	87.22	154.81	6,531.5	-3,246.0	2,182.8	3,869.1	4.04	
10,166.0	89.16	154.54	6,534.3	-3,327.4	2,221.2	3,959.1	2.18	
10,255.0	89.80	154.84	6,535.1	-3,407.8	2,259.3	4,048.1	0.79	
10,345.0	88.69	154.11	6,536.3	-3,489.0	2,298.1	4,138.1	1.48	

RECEIVED
Office of Oil and Gas
AUG 03 2015
WV Department of Environmental Protection



EOW Completion Report



Company:	Antero Resources	Local Co-ordinate Reference:	Well Hudkins Unit 1H
Project:	Doddridge County WV	TVD Reference:	P523: 1055 GL + 19 KB @ 1074.0usft
Site:	Hudkins/Leason/Pad	MD Reference:	P523: 1055 GL + 19 KB @ 1074.0usft
Well:	Hudkins Unit 1H	North Reference:	Grid
Wellbore:	Original Wellpath	Survey Calculation Method:	Minimum Curvature
Design:	As Drilled	Database:	Oklahoma District

Survey								
MD (usft)	Inc (°)	Azi (azimuth) (°)	TVD (usft)	N/S (usft)	E/W (usft)	V. Sec (usft)	DLeg (°/100usft)	
10,434.0	88.52	154.70	6,538.5	-3,569.3	2,336.5	4,227.0	0.69	
10,524.0	88.79	154.78	6,540.6	-3,650.6	2,374.9	4,317.0	0.31	
10,613.0	88.52	154.08	6,542.7	-3,730.9	2,413.3	4,406.0	0.84	
10,703.0	88.45	154.56	6,545.0	-3,812.0	2,452.3	4,496.0	0.54	
10,793.0	90.10	154.40	6,546.2	-3,893.2	2,491.0	4,585.9	1.84	
10,882.0	90.47	154.07	6,545.7	-3,973.3	2,529.7	4,674.9	0.56	
10,972.0	89.36	152.67	6,545.9	-4,053.8	2,570.1	4,764.9	1.99	
11,061.0	88.83	156.01	6,547.3	-4,134.0	2,608.6	4,853.9	3.80	
11,151.0	88.42	155.29	6,549.4	-4,215.9	2,645.7	4,943.9	0.92	
11,240.0	88.05	155.57	6,552.2	-4,296.9	2,682.7	5,032.8	0.52	
11,330.0	88.86	155.32	6,554.6	-4,378.7	2,720.1	5,122.8	0.94	
11,419.0	88.79	154.66	6,556.4	-4,459.3	2,757.7	5,211.7	0.75	
11,509.0	88.99	154.46	6,558.2	-4,540.6	2,796.3	5,301.7	0.31	
11,599.0	87.45	154.56	6,561.0	-4,621.8	2,835.1	5,391.7	1.71	
11,688.0	88.52	153.43	6,564.1	-4,701.7	2,874.1	5,480.6	1.75	
11,778.0	88.26	152.58	6,566.6	-4,781.9	2,914.9	5,570.5	0.99	
11,868.0	88.80	154.10	6,568.9	-4,862.3	2,955.3	5,660.5	1.79	
11,957.0	89.80	153.77	6,570.0	-4,942.2	2,994.4	5,749.5	1.18	
12,047.0	89.33	153.71	6,570.7	-5,022.9	3,034.2	5,839.5	0.53	
12,137.0	89.33	153.12	6,571.8	-5,103.4	3,074.5	5,929.4	0.66	
12,227.0	88.96	153.67	6,573.1	-5,183.9	3,114.8	6,019.4	0.74	
12,317.0	89.53	155.36	6,574.3	-5,265.1	3,153.5	6,109.4	1.98	
12,406.0	89.06	154.55	6,575.4	-5,345.7	3,191.1	6,198.4	1.05	
12,496.0	87.11	151.52	6,578.4	-5,425.9	3,231.9	6,288.3	4.00	
12,586.0	87.88	154.28	6,582.3	-5,505.9	3,272.9	6,378.2	3.18	
12,675.0	89.70	155.03	6,584.2	-5,586.3	3,311.0	6,467.1	2.21	
12,765.0	90.10	154.04	6,584.4	-5,667.6	3,349.7	6,557.1	1.19	
12,854.0	89.97	155.74	6,584.3	-5,748.2	3,387.4	6,646.1	1.92	
12,944.0	89.93	155.55	6,584.4	-5,830.2	3,424.5	6,736.1	0.22	
13,033.0	90.10	155.04	6,584.4	-5,911.0	3,461.7	6,825.1	0.60	
13,122.0	90.50	155.57	6,583.9	-5,991.9	3,498.9	6,914.1	0.75	
13,211.0	90.47	155.67	6,583.1	-6,072.9	3,535.7	7,003.1	0.12	
13,301.0	89.60	154.53	6,583.1	-6,154.6	3,573.6	7,093.1	1.59	
13,390.0	89.20	154.04	6,584.0	-6,234.7	3,612.2	7,182.1	0.71	
13,481.0	89.03	153.70	6,585.4	-6,316.4	3,652.2	7,273.0	0.42	
13,571.0	89.70	155.33	6,586.4	-6,397.7	3,691.0	7,363.0	1.96	
13,660.0	89.96	155.08	6,586.7	-6,478.5	3,728.3	7,452.0	0.41	
13,737.0	90.07	154.00	6,586.7	-6,548.0	3,761.4	7,529.0	1.41	
13,795.0	90.07	154.00	6,586.6	-6,600.1	3,786.8	7,587.0	0.00	

RECEIVED
Office of Oil and Gas

AUG 03 2015

WV Department of
Environmental Protection

COMPASS 5000.1 Build 70

10/23/2015

17-06415



EOW Completion Report



Company:	Antero Resources	Local Co-ordinate Reference:	Well Hudkins Unit 1H
Project:	Doddridge County WV	TVD Reference:	P523: 1055 GL + 19 KB @ 1074.0usft
Site:	Hudkins/Leason/Pad	MD Reference:	P523: 1055 GL + 19 KB @ 1074.0usft
Well:	Hudkins Unit 1H	North Reference:	Grid
Wellbore:	Original Wellpath	Survey Calculation Method:	Minimum Curvature
Design:	As Drilled	Database:	Oklahoma District

Design Annotations

Measured Depth (usft)	Vertical Depth (usft)	Local Coordinates		Comment
		+N/-S (usft)	+E/-W (usft)	
6,223.0	6,125.3	43.2	509.0	Sycamore
6,414.0	6,283.9	-15.2	595.6	Middlesex
6,592.0	6,397.6	-121.1	681.1	Burkett
6,666.0	6,432.3	-176.2	716.1	Tully
6,771.0	6,463.0	-262.5	767.0	Marcellus

Checked By: _____ Approved By: _____ Date: _____

RECEIVED
Office of Oil and Gas
AUG 03 10
WV Department of
Environmental Protection

17-06415

Hydraulic Fracturing Fluid Product Component Information Disclosure



Job Start Date:	1/19/2015
Job End Date:	2/4/2015
State:	West Virginia
County:	Doddridge
API Number:	47-017-06415-00-00
Operator Name:	Anitero Resources Corporation
Well Name and Number:	Hudkins Unit 1H
Longitude:	-80.88260800
Latitude:	39.27340600
Datum:	NAD83
Federal/Tribal Well:	NO
True Vertical Depth:	6,587
Total Base Water Volume (gal):	9,733,290
Total Base Non Water Volume:	0

Hydraulic Fracturing Fluid Composition:

Trade Name	Supplier	Purpose	Ingredients	Chemical Abstract Service Number (CAS #)	Maximum Ingredient Concentration in Additive (% by mass)**	Maximum Ingredient Concentration in HF Fluid (% by mass)**	Comments
Water	Operator	Carrier	Water	7732-18-5	100.00000	90.09710	
Sand, White, 40/70	Baker Hughes	Proppant	MSDS and Non-MSDS Ingredients Listed Below	N/A		5.15592	
Sand, White, 20/40	Baker Hughes	Proppant	MSDS and Non-MSDS Ingredients Listed Below	N/A		3.37040	
Sand, White, 100 mesh	Baker Hughes	Proppant	MSDS and Non-MSDS Ingredients Listed Below	N/A		0.86926	
HCl, 10.1 - 15%	Baker Hughes	Acidizing	MSDS and Non-MSDS Ingredients Listed Below	N/A		0.21401	SmartCare Product
GW-3LDF	Baker Hughes	Gelling Agent	MSDS and Non-MSDS Ingredients Listed Below	N/A		0.08553	SmartCare Product
FRW-18	Baker Hughes	Friction Reducer	MSDS and Non-MSDS Ingredients Listed Below	N/A		0.05844	SmartCare Product
Calcium Chloride	Baker Hughes	Salts	MSDS and Non-MSDS Ingredients Listed Below	N/A		0.01789	

10/23/2015

17.06415

Scaletrol 720	Baker Hughes	Scale Inhibitor										0.01519	SmartCare Product
Enzyme G-NE	Baker Hughes	Breaker	MSDS and Non-MSDS Ingredients Listed Below		N/A								
Alpha 1427	Baker Hughes	Biocide	MSDS and Non-MSDS Ingredients Listed Below		N/A							0.01231	SmartCare Product
Ferrotrol 300L	Baker Hughes	Iron Control	MSDS and Non-MSDS Ingredients Listed Below		N/A							0.00842	SmartCare Product
CI-39	Baker Hughes	Corrosion Inhibitor	MSDS and Non-MSDS Ingredients Listed Below		N/A							0.00148	SmartCare Product
Ingredients shown above are subject to 29 CFR 1910.1200(i) and appear on Material Safety Data Sheets (MSDS). Ingredients shown below are Non-MSDS.													
Ingredients in Additive Baker Hughes (s) (MSDS and non-MSDS)													
		See Trade Name(s) List											
		Crystalline Silica (Quartz)			14808-60-7					100.00000		9.38585	
		Water			7732-18-5					95.00000		0.23017	
		Mineral Oil			8042-47-5					70.00000		0.05981	
		Guar Gum			9000-30-0					60.00000		0.05127	
		Hydrochloric Acid			7647-01-0					15.00000		0.03207	
		Paraffinic Petroleum Distillate			64742-55-8					30.00000		0.02563	
		Petroleum Distillates			64742-47-8					30.00000		0.02563	
		Calcium Chloride			10043-52-4					100.00000		0.01863	
		Poly (acrylamide-co-acrylic acid) partial sodium salt			62649-23-4					30.00000		0.01752	
		Hydrotreated Light Distillate			64742-47-8					30.00000		0.01752	
		Ethylene Glycol			107-21-1					45.00000		0.00683	
		1-butoxy-2-propanol			5131-66-8					5.00000		0.00427	
		Crystalline Silica: Quartz			14808-60-7					5.00000		0.00427	
		Isotridecanol, ethoxylated			9043-30-5					5.00000		0.00427	
		Sodium Chloride			7647-14-5					5.00000		0.00396	
		2-Propenoic, Polymer with Sodium Phosphinate, Sodium Salt			71050-62-9					20.00000		0.00304	
		Glutaraldehyde			111-30-8					30.00000		0.00252	
		Ammonium Chloride			12125-02-9					3.00000		0.00175	
		Oleamide DEA			93-83-4					2.00000		0.00117	
		Alcohols, C12-16, ethoxylated			68551-12-2					2.00000		0.00117	
		Potassium Chloride			7447-40-7					5.00000		0.00105	
		Citric Acid			77-92-9					60.00000		0.00089	
		Didecyl Dimethyl Ammonium Chloride			7173-51-5					10.00000		0.00084	
		Hemicellulase Enzyme Concentrate			9025-56-3					5.00000		0.00061	
		Quaternary Ammonium Compound			68424-85-1					5.00000		0.00044	
		Ethanol			64-17-5					5.00000		0.00042	

RECEIVED
Office of Oil and Gas
AUG 08 2015
West Virginia Department of
Environmental Protection

17.06415

			Polyoxyethylene Sorbitan Monooleate	9005-65-6	0.50000	0.00029
			Sorbitan Monooleate	1338-43-8	0.50000	0.00029
			Oxyalkylated Fatty Acid	61791-002	40.00000	0.00018
			Formic Acid	64-18-6	30.00000	0.00013
			Tar Bases, Quinoline Derivs., Benzyl Chloride-Quaternized Aldehyde	72480-70-7	30.00000	0.00013
			2-butoxy-1-propanol	104-55-2	30.00000	0.00013
			Isopropanol	15821-83-7	0.10000	0.00009
			Sulfurized polyolefin	67-63-0	5.00000	0.00002
			Potassium Iodide	68037-13-8	5.00000	0.00002
			Polyakylene	7681-11-0	2.00000	0.00001
			Potassium Acetate	7756-94-7	1.00000	0.00000
				127-08-2	0.50000	0.00000

* Total Water Volume sources may include fresh water, produced water, and/or recycled water

** Information is based on the maximum potential for concentration and thus the total may be over 100%

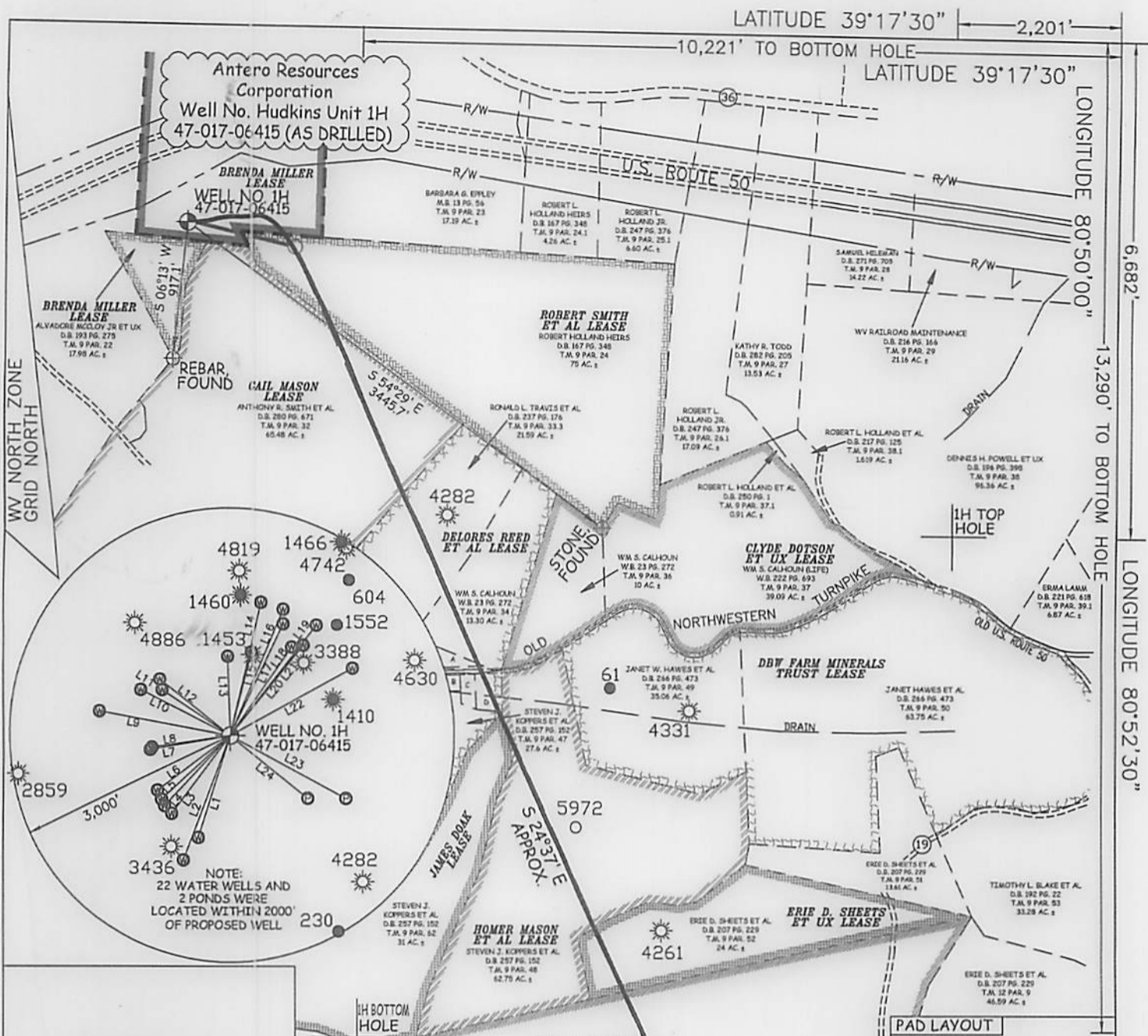
Note: For Field Development Products (products that begin with FDP), MSDS level only information has been provided. Ingredient information for chemicals subject to 29 CFR 1910.1200(i) and Appendix D are obtained from suppliers Material Safety Data Sheets (MSDS)

RECEIVED
Office of Oil and Gas

AUG 03 2015

WV Department of
Environmental Protection

10/23/2015



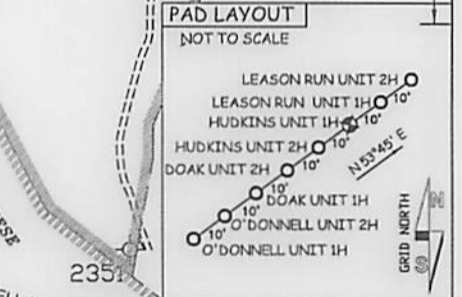
- A - MARVIN PHILLIPS ET AL. D.B. 269 PG. 227 T.M. 9 PAR. 34.2 1.03 AC.
- B - G.C.J.W. D.B. 283 PG. 265 T.M. 9 PAR. 47.1 0.41 AC.
- C - G.C.J.W. D.B. 283 PG. 265 T.M. 9 PAR. 47.6 0.52 AC.
- D - GEORGE L. HENRY ET AL. D.B. 282 PG. 158 T.M. 9 PAR. 47.3 1.17 AC.

AS DRILLED DATA:
WELL 1H TOP HOLE INFORMATION:
 N: 284,672ft E: 1,608,543ft
 LAT: 39°16'23.96" LON: 80°52'57.99"
BOTTOM HOLE INFORMATION:
 N: 278,007ft E: 1,612,221ft
 LAT: 39°15'18.65" LON: 80°52'09.54"
 WEST VIRGINIA COORDINATE SYSTEM OF 1927 NORTH ZONE. ZONE WAS DERIVED FROM MEASUREMENTS TAKEN WITH TRIMBLE GEOXT SUBMETER MAPPING GRADE GPS UNIT. PLAT ORIENTATION, CORNER, AND WELL REFERENCE TIE LINES ARE BASED ON GRID NORTH.

(NAD) 83 (UTM) ZONE 17 COORDS:
WELL 1H TOP HOLE INFORMATION:
 N: 4,347,124m E: 510,126m
BOTTOM HOLE INFORMATION:
 N: 4,345,112m E: 511,280m

LINE	BEARING	DISTANCE
L1	S 17°52' W	1415.04'
L2	S 21°05' W	1763.00'
L3	S 37°35' W	1298.22'
L4	S 43°42' W	1284.40'
L5	S 47°44' W	1253.61'
L6	S 53°31' W	1220.25'
L7	S 79°51' W	1099.01'
L8	S 81°12' W	1071.07'
L9	N 80°07' W	1797.94'
L10	N 83°58' W	1351.70'
L11	N 87°20' W	1100.65'
L12	N 82°31' W	1206.59'
L13	N 82°46' W	1043.78'
L14	N 12°31' E	1806.91'
L15	N 13°31' E	1135.82'
L16	N 22°21' E	1811.08'
L17	N 24°57' E	1634.43'
L18	N 34°27' E	1423.87'
L19	N 37°46' E	1856.43'
L20	N 38°31' E	1530.40'
L21	N 38°46' E	1535.36'
L22	N 61°02' E	1854.94'
L23	S 62°08' E	1749.53'
L24	N 51°44' W	1320.37'

NOTE:
 1. NO OCCUPIED DWELLINGS OR BUILDINGS TWO THOUSAND FIVE HUNDRED (2,500) SQUARE FEET OR LARGER USED TO HOUSE OR SHELTER DAIRY CATTLE OR POULTRY HUSBANDRY ARE LOCATED WITHIN SIX HUNDRED TWENTY-FIVE (625) FEET OF THE CENTER OF THE WELL PAD.
 2. TOP HOLE DATA SHOWN HEREON WAS PROVIDED BY ALLEGHENY SURVEYS, INC.
 3. AS DRILLED DATA WAS PROVIDED BY ANTERO RESOURCES CORPORATION.
 4. WLS IS NOT CERTIFYING THE DATA AND INFORMATION PROVIDED LISTED IN NOTES 2 AND 3, ONLY THE RELATIONSHIP TO THE DATA AND INFORMATION PROVIDED TO THE LEASE BOUNDARIES.
 5. WLS IS BY NO MEANS RESPONSIBLE FOR ANY ERRORS OR INACCURACIES WITH THE DATA AND INFORMATION THAT HAS BEEN PROVIDED.
 6. THIS WELL BORE IS SUBJECT TO THAT 60 FOOT STRIP OF LAND KNOWN AS THE OLD SISTERSVILLE AND SALEM TURNPIKE WHICH MAY OR MAY NOT COINCIDE WITH THE CURRENT LOCATION OF WV STATE ROUTE 23 IN THIS AREA.



STATE OF WEST VIRGINIA, DIVISION OF ENVIRONMENTAL PROTECTION, OFFICE OF OIL AND GAS
 WILLOW LAND SURVEYING PLLC
 P.O. BOX 17
 PENNSBORO, WV 26415

JOB # 13-089WA
 DRAWING # HUDKINS1HAD
 SCALE 1" = 1000'
 MINIMUM DEGREE OF ACCURACY SUBMETER
 PROVEN SOURCE OF ELEV. SUBMETER MAPPING GRADE GPS

LEGEND
 - - - Surface Owner Boundary Lines +/-
 - - - Interior Surface Tracts +/-
 X Existing Fence
 Found monument, as noted
 O Proposed Well Path
 O As Drilled Well Path

STATE OF WEST VIRGINIA DEPARTMENT OF ENERGY DIVISION OF OIL AND GAS
 WELL TYPE: OIL GAS X LIQUID INJECTION WASTE DISPOSAL
 (IF "GAS") PRODUCTION X STORAGE DEEP SHALLOW X
 LOCATION: ELEVATION 1,083' ORIGINAL - 1,057' AS-DRILLED WATERSHED NORTH FORK HUGHES RIVER
 QUADRANGLE PENNSBORO 7.5 (TOP HOLE) WEST UNION 7.5 (BOTTOM HOLE) DISTRICT CENTRAL COUNTY DODD
 SURFACE OWNER ALVADORE MCCLOY JR ET UX ACREAGE 17.98 ACRES +/-
 OIL & GAS ROYALTY OWNER BRENDA MILLER; ROBERT SMITH ET AL; GAIL MASON; DELORES REED ET AL; LEASE ACREAGE 37.625 ACRES+; 75 ACRES+; 148.793 ACRES+; 75.6 ACRES+;
 JAMES DOAK; HOMER MASON ET AL; ERIE D. SHEETS ET UX; ERIE D. SHEETS; CASSIE REESE 31 ACRES+; 62 ACRES+; 24 ACRES+; 141 ACRES+; 142 ACRES+
 PROPOSED WORK: DRILL CONVERT DRILL DEEPER REDRILL FRACTURE OR STIMULATE
 PLUG OFF OLD FORMATION PERFORATE NEW FORMATION OTHER PHYSICAL CHANGE IN WELL
 (SPECIFY) (X) AS DRILLED PLUG & ABANDON CLEAN OUT & REPLUG
 TARGET FORMATION MARCELLUS ESTIMATED DEPTH 6,587' TVD 13,795' MD
 WELL OPERATOR ANTERO RESOURCES CORP. DESIGNATED AGENT DIANNA STAMPER
 ADDRESS 1615 WYNKOOP STREET ADDRESS 5400 D BIG TYLER ROAD
 DENVER, CO 80202 CHARLESTON, WV 25313