

LATITUDE 39°22'30"

10,024'

2,328' TO BOTTOM HOLE
LATITUDE 39°25'00"

LONGITUDE 80°45'00"
LONGITUDE 80°42'30"

Antero Resources Corporation
Well No. Knight Unit 2H

WELL NO. 2H
BOTTOM HOLE

EDGAR HARTLEY LEASE

SANDRA HOPPER
D.B. 337 PG. 158A
T.M. 19 PAR. 27
99.04 AC. ±

ROBERT T. GILLE ET AL
D.B. 317 PG. 545
T.M. 19 PAR. 27.1
2 AC. ±

2H TOP HOLE

ROBERT T. GILLE ET AL LEASE

ROBERT T. GILLE ET AL
D.B. 317 PG. 545
T.M. 19 PAR. 27.1
2 AC. ±

ROBERT T. GILLE ET AL
D.B. 324 PG. 199
T.M. 19 PAR. 59
0.5 AC. ±

ROBERT T. GILLE ET AL
D.B. 324 PG. 199
T.M. 19 PAR. 59
0.5 AC. ±

ROBERT T. GILLE ET AL
D.B. 324 PG. 199
T.M. 19 PAR. 59
0.5 AC. ±

ROBERT T. GILLE ET AL
D.B. 324 PG. 199
T.M. 19 PAR. 59
0.5 AC. ±

ROBERT T. GILLE ET AL
D.B. 324 PG. 199
T.M. 19 PAR. 59
0.5 AC. ±

ROBERT T. GILLE ET AL
D.B. 324 PG. 199
T.M. 19 PAR. 59
0.5 AC. ±

ROBERT T. GILLE ET AL
D.B. 324 PG. 199
T.M. 19 PAR. 59
0.5 AC. ±

ROBERT T. GILLE ET AL
D.B. 324 PG. 199
T.M. 19 PAR. 59
0.5 AC. ±

ROBERT T. GILLE ET AL
D.B. 324 PG. 199
T.M. 19 PAR. 59
0.5 AC. ±

ROBERT T. GILLE ET AL
D.B. 324 PG. 199
T.M. 19 PAR. 59
0.5 AC. ±

ROBERT T. GILLE ET AL
D.B. 324 PG. 199
T.M. 19 PAR. 59
0.5 AC. ±

ROBERT T. GILLE ET AL
D.B. 324 PG. 199
T.M. 19 PAR. 59
0.5 AC. ±

ROBERT T. GILLE ET AL
D.B. 324 PG. 199
T.M. 19 PAR. 59
0.5 AC. ±

ROBERT T. GILLE ET AL
D.B. 324 PG. 199
T.M. 19 PAR. 59
0.5 AC. ±

ROBERT T. GILLE ET AL
D.B. 324 PG. 199
T.M. 19 PAR. 59
0.5 AC. ±

ROBERT T. GILLE ET AL
D.B. 324 PG. 199
T.M. 19 PAR. 59
0.5 AC. ±

ROBERT T. GILLE ET AL
D.B. 324 PG. 199
T.M. 19 PAR. 59
0.5 AC. ±

ROBERT T. GILLE ET AL
D.B. 324 PG. 199
T.M. 19 PAR. 59
0.5 AC. ±

ROBERT T. GILLE ET AL
D.B. 324 PG. 199
T.M. 19 PAR. 59
0.5 AC. ±

ROBERT T. GILLE ET AL
D.B. 324 PG. 199
T.M. 19 PAR. 59
0.5 AC. ±

ROBERT T. GILLE ET AL
D.B. 324 PG. 199
T.M. 19 PAR. 59
0.5 AC. ±

ROBERT T. GILLE ET AL
D.B. 324 PG. 199
T.M. 19 PAR. 59
0.5 AC. ±

ROBERT T. GILLE ET AL
D.B. 324 PG. 199
T.M. 19 PAR. 59
0.5 AC. ±

ROBERT T. GILLE ET AL
D.B. 324 PG. 199
T.M. 19 PAR. 59
0.5 AC. ±

ROBERT T. GILLE ET AL
D.B. 324 PG. 199
T.M. 19 PAR. 59
0.5 AC. ±

ROBERT T. GILLE ET AL
D.B. 324 PG. 199
T.M. 19 PAR. 59
0.5 AC. ±

ROBERT T. GILLE ET AL
D.B. 324 PG. 199
T.M. 19 PAR. 59
0.5 AC. ±

ROBERT T. GILLE ET AL
D.B. 324 PG. 199
T.M. 19 PAR. 59
0.5 AC. ±

ROBERT T. GILLE ET AL
D.B. 324 PG. 199
T.M. 19 PAR. 59
0.5 AC. ±

ROBERT T. GILLE ET AL
D.B. 324 PG. 199
T.M. 19 PAR. 59
0.5 AC. ±

ROBERT T. GILLE ET AL
D.B. 324 PG. 199
T.M. 19 PAR. 59
0.5 AC. ±

ROBERT T. GILLE ET AL
D.B. 324 PG. 199
T.M. 19 PAR. 59
0.5 AC. ±

ROBERT T. GILLE ET AL
D.B. 324 PG. 199
T.M. 19 PAR. 59
0.5 AC. ±

ROBERT T. GILLE ET AL
D.B. 324 PG. 199
T.M. 19 PAR. 59
0.5 AC. ±

ROBERT T. GILLE ET AL
D.B. 324 PG. 199
T.M. 19 PAR. 59
0.5 AC. ±

ROBERT T. GILLE ET AL
D.B. 324 PG. 199
T.M. 19 PAR. 59
0.5 AC. ±

ROBERT T. GILLE ET AL
D.B. 324 PG. 199
T.M. 19 PAR. 59
0.5 AC. ±

ROBERT T. GILLE ET AL
D.B. 324 PG. 199
T.M. 19 PAR. 59
0.5 AC. ±

ROBERT T. GILLE ET AL
D.B. 324 PG. 199
T.M. 19 PAR. 59
0.5 AC. ±

ROBERT T. GILLE ET AL
D.B. 324 PG. 199
T.M. 19 PAR. 59
0.5 AC. ±

ROBERT T. GILLE ET AL
D.B. 324 PG. 199
T.M. 19 PAR. 59
0.5 AC. ±

ROBERT T. GILLE ET AL
D.B. 324 PG. 199
T.M. 19 PAR. 59
0.5 AC. ±

ROBERT T. GILLE ET AL
D.B. 324 PG. 199
T.M. 19 PAR. 59
0.5 AC. ±

ROBERT T. GILLE ET AL
D.B. 324 PG. 199
T.M. 19 PAR. 59
0.5 AC. ±

ROBERT T. GILLE ET AL
D.B. 324 PG. 199
T.M. 19 PAR. 59
0.5 AC. ±

ROBERT T. GILLE ET AL
D.B. 324 PG. 199
T.M. 19 PAR. 59
0.5 AC. ±

ROBERT T. GILLE ET AL
D.B. 324 PG. 199
T.M. 19 PAR. 59
0.5 AC. ±

ROBERT T. GILLE ET AL
D.B. 324 PG. 199
T.M. 19 PAR. 59
0.5 AC. ±

ROBERT T. GILLE ET AL
D.B. 324 PG. 199
T.M. 19 PAR. 59
0.5 AC. ±

ROBERT T. GILLE ET AL
D.B. 324 PG. 199
T.M. 19 PAR. 59
0.5 AC. ±

ROBERT T. GILLE ET AL
D.B. 324 PG. 199
T.M. 19 PAR. 59
0.5 AC. ±

ROBERT T. GILLE ET AL
D.B. 324 PG. 199
T.M. 19 PAR. 59
0.5 AC. ±

ROBERT T. GILLE ET AL
D.B. 324 PG. 199
T.M. 19 PAR. 59
0.5 AC. ±

ROBERT T. GILLE ET AL
D.B. 324 PG. 199
T.M. 19 PAR. 59
0.5 AC. ±

ROBERT T. GILLE ET AL
D.B. 324 PG. 199
T.M. 19 PAR. 59
0.5 AC. ±

ROBERT T. GILLE ET AL
D.B. 324 PG. 199
T.M. 19 PAR. 59
0.5 AC. ±

ROBERT T. GILLE ET AL
D.B. 324 PG. 199
T.M. 19 PAR. 59
0.5 AC. ±

ROBERT T. GILLE ET AL
D.B. 324 PG. 199
T.M. 19 PAR. 59
0.5 AC. ±

ROBERT T. GILLE ET AL
D.B. 324 PG. 199
T.M. 19 PAR. 59
0.5 AC. ±

ROBERT T. GILLE ET AL
D.B. 324 PG. 199
T.M. 19 PAR. 59
0.5 AC. ±

ROBERT T. GILLE ET AL
D.B. 324 PG. 199
T.M. 19 PAR. 59
0.5 AC. ±

ROBERT T. GILLE ET AL
D.B. 324 PG. 199
T.M. 19 PAR. 59
0.5 AC. ±

ROBERT T. GILLE ET AL
D.B. 324 PG. 199
T.M. 19 PAR. 59
0.5 AC. ±

ROBERT T. GILLE ET AL
D.B. 324 PG. 199
T.M. 19 PAR. 59
0.5 AC. ±

ROBERT T. GILLE ET AL
D.B. 324 PG. 199
T.M. 19 PAR. 59
0.5 AC. ±

ROBERT T. GILLE ET AL
D.B. 324 PG. 199
T.M. 19 PAR. 59
0.5 AC. ±

ROBERT T. GILLE ET AL
D.B. 324 PG. 199
T.M. 19 PAR. 59
0.5 AC. ±

ROBERT T. GILLE ET AL
D.B. 324 PG. 199
T.M. 19 PAR. 59
0.5 AC. ±

ROBERT T. GILLE ET AL
D.B. 324 PG. 199
T.M. 19 PAR. 59
0.5 AC. ±

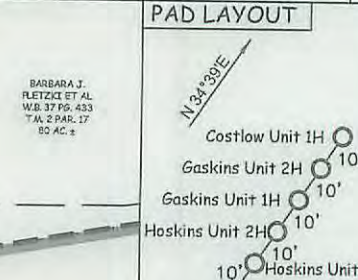
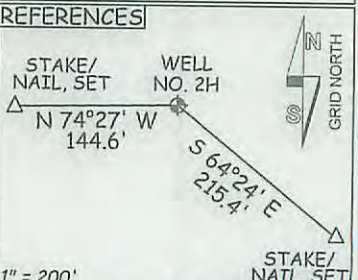
NOTE:
NO OCCUPIED DWELLINGS OR BUILDINGS TWO THOUSAND
FIVE HUNDRED (2,500) SQUARE FEET OR LARGER USED TO
HOUSE OR SHELTER DAIRY CATTLE OR POULTRY HUSBANDRY
ARE LOCATED WITHIN SIX HUNDRED TWENTY-FIVE (625)
FEET OF THE CENTER OF THE WELL PAD.

NOTE:
NO WATER WELLS WERE
LOCATED WITHIN 2000'
OF PROPOSED WELL

NOTES:
WELL 2H TOP HOLE INFORMATION:
N: 318,445ft E: 1,648,363ft
LAT: 39°22'03.49" LON: 80°44'37.63"
BOTTOM HOLE INFORMATION:
N: 327,752ft E: 1,644,408ft
LAT: 39°23'34.93" LON: 80°45'29.65"
WEST VIRGINIA COORDINATE
2H BOTTOM HOLE

SYSTEM OF 1927 NORTH ZONE.
ZONE WAS DERIVED FROM
MEASUREMENTS TAKEN WITH
TRIMBLE GEOXT SUBMETER
MAPPING GRADE GPS UNIT.
PLAT ORIENTATION, CORNER,
AND WELL REFERENCE TIE LINES
ARE BASED ON GRID NORTH.

(NAD) 83 (UTM) ZONE 17 COORDS:
WELL 2H TOP HOLE INFORMATION:
N: 4,357,615m E: 522,086m
BOTTOM HOLE INFORMATION:
N: 4,360,431m E: 520,833m



Office of Oil & Gas
DEC 09 2015
DOUGLAS R. ROWE
LICENSED
No. 2202
STATE OF WEST VIRGINIA
PROFESSIONAL SURVEYOR

12/11/2015
COUNTY NAME PERMIT

JOB # 12-143WA
DRAWING # KNIGHT2HR1
SCALE 1" = 1000'
MINIMUM DEGREE OF
ACCURACY SUBMETER
PROVEN SOURCE OF ELEV.
SUBMETER MAPPING GRADE GPS

LEGEND
--- Surface Owner Boundary Lines +/-
--- Interior Surface Tracts +/-
--- Existing Fence
--- Found monument, as noted

DOUGLAS R. ROWE P.S. 2202

DATE 12/07/15
OPERATOR'S WELL# KNIGHT UNIT #2H

I THE UNDERSIGNED, HEREBY CERTIFY THAT THIS PLAT IS CORRECT
TO THE BEST OF MY KNOWLEDGE AND BELIEF AND SHOWS ALL THE
INFORMATION REQUIRED BY LAW AND THE RULES ISSUED AND
PERSCRIBED BY THE DEPARTMENT OF ENVIRONMENTAL PROTECTION.



STATE OF WEST VIRGINIA, DIVISION
OF ENVIRONMENTAL PROTECTION,
OFFICE OF OIL AND GAS
WILLOW LAND SURVEYING PLLC
220 MASONIC AVE. PENNSBORO
WEST VIRGINIA 26415

STATE OF WEST VIRGINIA DEPARTMENT OF ENERGY
DIVISION OF OIL AND GAS
WELL TYPE: OIL GAS X LIQUID INJECTION WASTE DISPOSAL
(IF "GAS") PRODUCTION X STORAGE DEEP SHALLOW X
LOCATION: ELEVATION ORIG 1,171' - PROPOSED 1,157' WATERSHED McELROY CREEK
QUADRANGLE SMITHBURG 7.5 (TH) SHIRLEY 7.5 (BH) DISTRICT GRANT COUNTY DODDRIDGE
SURFACE OWNER KENNETH E. HAMILTON ET AL ACREAGE 90.35 ACRES +/-
OIL & GAS ROYALTY OWNER SILAS ASH; ANGELINA DUNCAN; BEULAH CAYTON ET AL; MAUDE SHRADER ET AL; DAVID E. BOYER; ROBERT T. GILLE ET AL; EDGAR HARTLEY

LEASE ACREAGE 120 ACRES±; 100 ACRES±; 123.5 ACRES±; 114.5 ACRES±; 102.48 ACRES±; 120.92 ACRES±; 30 ACRES±
PROPOSED WORK: DRILL CONVERT DRILL DEEPER X REDRILL FRACTURE OR STIMULATE X
PLUG OFF OLD FORMATION PERFORATE NEW FORMATION X OTHER PHYSICAL CHANGE IN WELL
(SPECIFY) MOD-BHL PLUG & ABANDON CLEAN OUT & REPLUG
TARGET FORMATION MARCELLUS ESTIMATED DEPTH 7,400' TVD 18,100' MD

WELL OPERATOR ANTERO RESOURCES CORP. DESIGNATED AGENT DIANNA STAMPER
ADDRESS 1615 WYNKOOP STREET ADDRESS 5400 D BIG TYLER ROAD
FORM WW-6 DENVER, CO 80202 CHARLESTON, WV 25313

LATITUDE 39°22'30"

10,024'

2,328' TO BOTTOM HOLE
LATITUDE 39°25'00"