



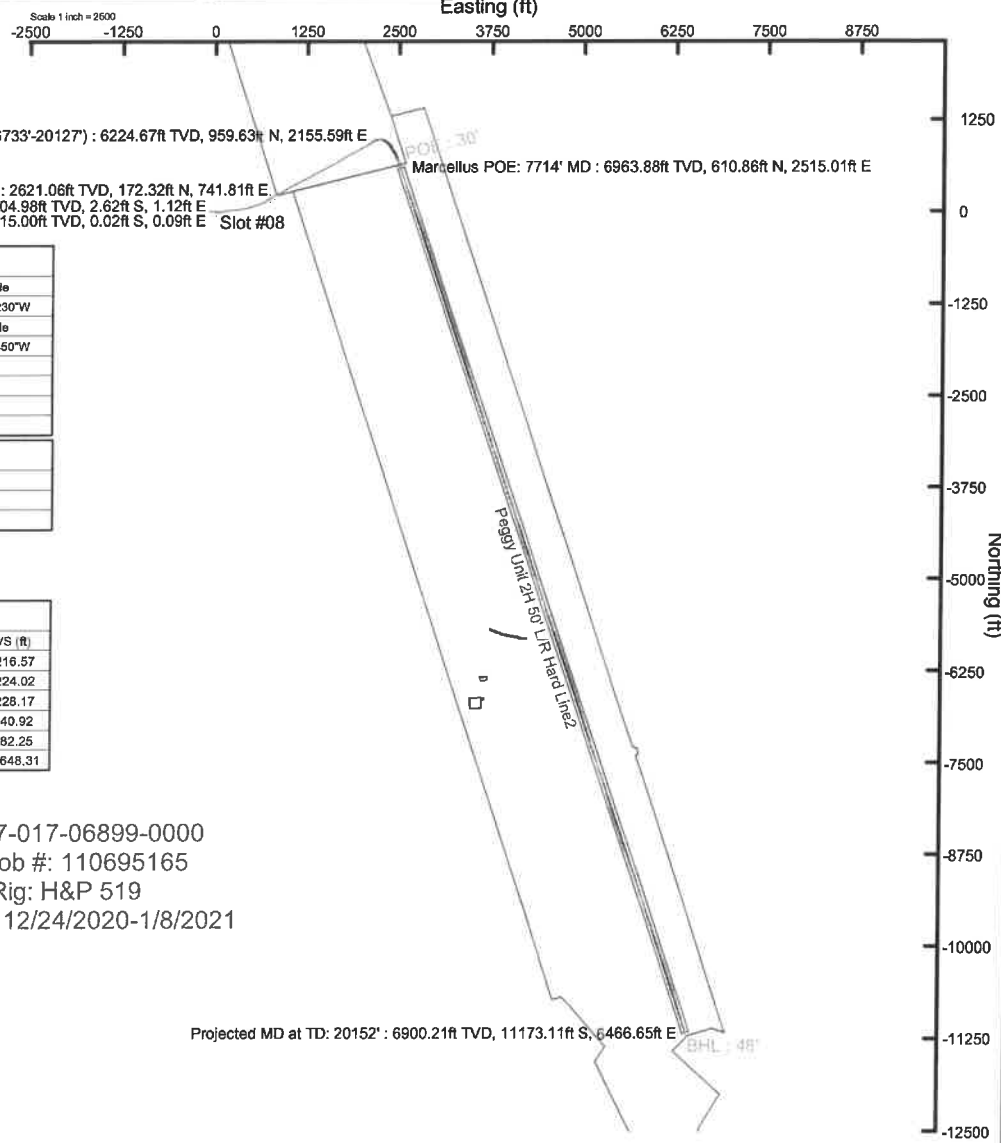
ANTERO RESOURCES CORPORATION



Location: Doddridge Co., WV
 Field: Doddridge
 Facility: Peggy June Pad

Slot: Slot #08
 Well: Peggy Unit 2H
 Wellbore: Peggy Unit 2H PWB

Plot reference wellpath is Peggy Unit 2H PWP Rev-A.0	Grid System: NAD27 / UTM Zone 17 North, US feet
True vertical depths are referenced to H&P 519 (RKB)	North Reference: Grid north
Reference wellpath measured depths are referenced to H&P 519 (RKB)	Scale: True distance
H&P 519 (RKB) to Mean Sea Level: 1305 feet	Coordinates are in feet referenced to Slot
Mean Sea Level to Ground level (At Slot: Slot #08): -1275 feet	Depths are in feet
Offset wellpath MDs are referenced to each path's default MD datum	Created by: edesaur on 2021-01-16; Database: WA_MPL_EASTERNUS_Def



Location Information				
Facility Name	Grid East (US ft)	Grid North (US ft)	Latitude	Longitude
Peggy June Pad	1712149.550	14272437.360	39°18'11.5750"N	80°44'47.1230"W
Slot	Local N (ft)	Local E (ft)	Grid East (US ft)	Grid North (US ft)
Slot #08	-3.78	29.72	1712179.260	14272433.630
Comment	Peggy Unit 2H		Latitude	Longitude
H&P 519 (RKB) to Ground level (At Slot: Slot #08)			39°18'11.5370"N	80°44'46.7450"W
Mean Sea Level to Ground level (At Slot: Slot #08)				
H&P 519 (RKB) to Mean Sea Level			30ft	
			-1275ft	
			1305ft	

Well Data			
Slot	Well	Wellbore	Wellpath
Slot #08	Peggy Unit 2H	Peggy Unit 2H AWB	Peggy Unit 2H AWP Proj: 20152'
Slot #08	Peggy Unit 2H	Peggy Unit 2H PWB	Peggy Unit 2H PWP Rev-A.0

Gyrodota MS Gyro <17-1/2> (100-450) : 0.13° Inc, 115.00ft MD, 115.00ft TVD, 0.05ft VS
 Premier MWD <12-1/4> (450)(490-2652) : 1.09° Inc, 505.00ft MD, 504.98ft TVD, 2.84ft VS

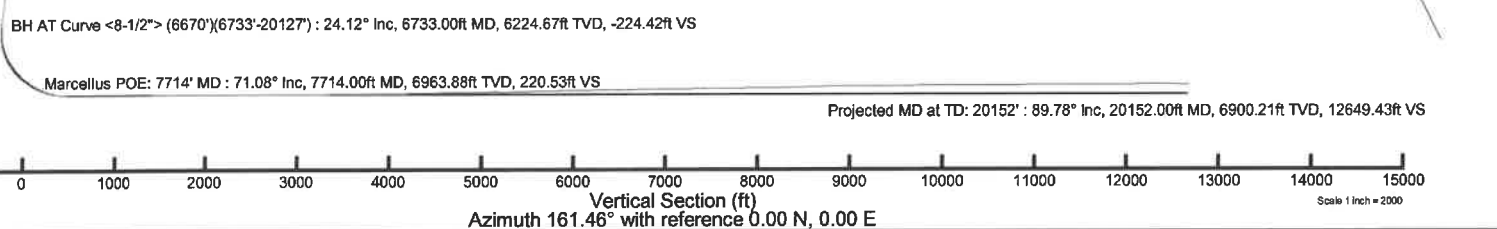
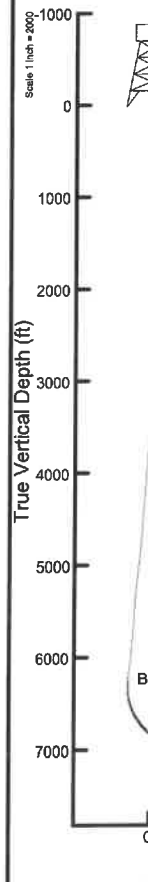
Well Profile Data								
Design Comment	MD (ft)	Inc (°)	Az (°)	TVD (ft)	Local N (ft)	Local E (ft)	DLS (°/100ft)	VS (ft)
Tie On	6670.00	24.520	55.930	6167.26	944.33	2134.86	0.85	-216.57
Proj. to Bottom	6737.00	24.520	55.930	6226.22	959.91	2157.69	0.00	-224.02
End of 3D Arc	6878.59	21.401	79.752	6358.85	981.01	2207.57	6.87	-228.17
POE	7710.61	69.794	161.463	6963.00	590.60	2518.74	8.20	240.92
Landing Pt	7957.02	90.000	161.463	7006.00	361.79	2595.46	8.20	482.25
BHL	20123.08	90.000	161.463	7006.00	-11173.06	6463.30	0.00	12648.31

Premier MWD <8-3/4> (2652)(2767-6655) : 20.68° Inc, 2782.00ft MD, 2621.06ft TVD, 72.50ft VS

API: 47-017-06899-0000
 BH Job #: 110695165
 Rig: H&P 519
 Duration: 12/24/2020-1/8/2021

WV Department of Environmental Protection
 AUG 30 2021
 Office of Oil and Gas
 RECEIVED

 User specified (HGM) Dip: 88.28° Field: 51806 nT
 Magnetic North is 7.76 degrees West of True North (at 22/Dec/2020)
 Grid North is 0.16 degrees East of True North
 To correct azimuth from True to Grid subtract 0.16 degrees
 To correct azimuth from Magnetic to Grid subtract 7.92 degrees





Actual Wellpath Report

Peggy Unit 2H AWP Proj: 20152'
Page 1 of 12



REFERENCE WELLPATH IDENTIFICATION			
Operator	ANTERO RESOURCES CORPORATION	Well	Peggy Unit 2H
Field	Doddridge	API	47-017-06899-0000
Facility	Peggy June Pad	Wellbore	Peggy Unit 2H AWB
Slot	Slot #08		

REPORT SETUP INFORMATION			
Projection System	NAD27 / UTM Zone 17 North, US feet	Software System	WellArchitect® 6.0
North Reference	Grid	User	Edsaryar
Scale	0.999606	Report Generated	18/Jan/2021 at 13:12
Convergence at slot	0.16° East	Database	WA_MPL_EASTERNUS_Defn

WELLPATH LOCATION						
	Local coordinates		Grid coordinates		Geographic coordinates	
	North[ft]	East[ft]	Easting[US ft]	Northing[US ft]	Latitude	Longitude
Slot Location	-3.76	29.72	1712179.26	14272433.63	39°18'11.5370"N	80°44'46.7450"W
Facility Reference Pt			1712149.55	14272437.39	39°18'11.5750"N	80°44'47.1230"W
Field Reference Pt			0.00	0.00	0°00'0.0000"	85°29'19.3013"W

WELLPATH DATUM			
Calculation method	Minimum curvature	H&P 519 (RKB) to Facility Vertical Datum	1305.00ft
Horizontal Reference Pt	Slot	H&P 519 (RKB) to Mean Sea Level	1305.00ft
Vertical Reference Pt	H&P 519 (RKB)	H&P 519 (RKB) to Ground Level at Slot (Slot #08)	30.00ft
MD Reference Pt	H&P 519 (RKB)	Section Origin	N 0.00, E 0.00 ft
Field Vertical Reference	Mean Sea Level	Section Azimuth	161.46°

RECEIVED
 Office of Oil and Gas
 WV Department of
 Environmental Protection
 AUG 30 2021



Actual Wellpath Report

Peggy Unit 2H AWP Proj: 20152'
Page 2 of 12



REFERENCE WELLPATH IDENTIFICATION			
Operator	ANTERO RESOURCES CORPORATION	Well	Peggy Unit 2H
Field	Doddridge	API	47-017-06899-0000
Facility	Peggy June Pad	Wellbore	Peggy Unit 2H AWB
Slot	Slot #08		

WELLPATH DATA (228 stations) † = interpolated, * = extrapolated station																
MD	Inclination	Azimuth	TVD	Vert Sect	North	East	Grid East	Grid North	Latitude	Longitude	Closure Dist	Closure Dir	DLS	Build Rate	Turn Rate	Comments
[ft]	[°]	[°]	[ft]	[ft]	[ft]	[ft]	[US ft]	[US ft]			[ft]	[°]	[°/100ft]	[°/100ft]	[°/100ft]	
0.00†	0.000	100.530	0.00	0.00	0.00	0.00	1712179.26	14272433.63	39°18'11.5370"N	80°44'46.7450"W	0.00	0.000	0.00	0.00	0.00	
30.00	0.000	100.530	30.00	0.00	0.00	0.00	1712179.26	14272433.63	39°18'11.5370"N	80°44'46.7450"W	0.00	0.000	0.00	0.00	0.00	
115.00	0.130	100.530	115.00	0.05	-0.02	0.09	1712179.35	14272433.61	39°18'11.5368"N	80°44'46.7438"W	0.10	100.530	0.15	0.15	0.00	Gyrodata MS Gyro <17-1/2"> (100'-450')
165.00	0.150	100.120	165.00	0.11	-0.04	0.22	1712179.47	14272433.59	39°18'11.5366"N	80°44'46.7423"W	0.22	100.407	0.04	0.04	-0.82	
215.00	0.250	150.510	215.00	0.24	-0.15	0.33	1712179.59	14272433.48	39°18'11.5355"N	80°44'46.7408"W	0.36	113.657	0.39	0.20	100.78	
265.00	0.280	149.200	265.00	0.47	-0.35	0.45	1712179.71	14272433.28	39°18'11.5335"N	80°44'46.7393"W	0.57	127.580	0.06	0.06	-2.62	
315.00	0.330	165.470	315.00	0.73	-0.59	0.55	1712179.81	14272433.04	39°18'11.5311"N	80°44'46.7381"W	0.81	137.117	0.20	0.10	32.54	
365.00	0.280	149.390	365.00	1.00	-0.83	0.65	1712179.91	14272432.80	39°18'11.5287"N	80°44'46.7368"W	1.06	142.245	0.20	-0.10	-32.16	
415.00	0.690	169.000	415.00	1.41	-1.24	0.77	1712180.03	14272432.40	39°18'11.5247"N	80°44'46.7353"W	1.45	148.197	0.87	0.82	39.22	
465.00	0.950	163.950	464.99	2.13	-1.93	0.94	1712180.20	14272431.70	39°18'11.5179"N	80°44'46.7331"W	2.15	154.068	0.54	0.52	-10.10	
505.00	1.090	166.280	504.98	2.84	-2.62	1.12	1712180.38	14272431.01	39°18'11.5111"N	80°44'46.7308"W	2.85	156.834	0.36	0.35	5.83	Premier MWD <12-1/4"> (450')(490'-2652')
536.00	1.280	152.920	535.98	3.47	-3.21	1.35	1712180.61	14272430.42	39°18'11.5052"N	80°44'46.7280"W	3.48	157.241	1.08	0.61	-43.10	
629.00	2.560	126.990	628.93	6.21	-5.39	3.48	1712182.74	14272428.25	39°18'11.4836"N	80°44'46.7009"W	6.41	147.141	1.63	1.38	-27.88	
721.00	4.980	109.810	720.72	10.39	-7.98	8.88	1712188.13	14272425.66	39°18'11.4579"N	80°44'46.6323"W	11.94	131.938	2.87	2.63	-18.67	
813.00	7.610	100.140	812.16	15.79	-10.40	18.63	1712197.89	14272423.23	39°18'11.4336"N	80°44'46.5083"W	21.34	119.174	3.07	2.86	-10.51	
906.00	10.090	93.040	904.05	21.74	-11.92	32.83	1712212.08	14272421.72	39°18'11.4182"N	80°44'46.3278"W	34.93	109.953	2.91	2.67	-7.63	
1001.00	13.240	85.270	997.08	27.40	-11.46	51.99	1712231.23	14272422.17	39°18'11.4222"N	80°44'46.0840"W	53.24	102.434	3.70	3.32	-8.18	
1096.00	16.420	78.550	1088.91	31.66	-7.90	76.00	1712255.23	14272425.73	39°18'11.4568"N	80°44'45.7785"W	76.41	95.934	3.80	3.35	-7.07	
1191.00	19.380	75.310	1179.31	34.37	-1.24	104.41	1712283.63	14272432.39	39°18'11.5219"N	80°44'45.4168"W	104.42	90.678	3.29	3.12	-3.41	
1286.00	21.680	75.410	1268.27	36.64	7.18	136.65	1712315.85	14272440.81	39°18'11.6042"N	80°44'45.0065"W	136.84	85.991	2.42	2.42	0.11	
1380.00	23.850	80.490	1354.95	40.82	14.70	172.20	1712351.39	14272448.32	39°18'11.6775"N	80°44'44.5539"W	172.83	85.121	3.11	2.31	5.40	
1475.00	26.700	84.930	1440.85	48.81	19.76	212.41	1712391.59	14272453.38	39°18'11.7264"N	80°44'44.0422"W	213.33	84.686	3.60	3.00	4.67	
1570.00	29.520	86.000	1524.64	59.66	23.28	257.03	1712436.19	14272456.90	39°18'11.7599"N	80°44'43.4745"W	258.08	84.825	3.02	2.97	1.13	
1665.00	30.300	83.960	1606.99	70.72	27.43	304.21	1712483.35	14272461.05	39°18'11.7996"N	80°44'42.8742"W	305.45	84.847	1.35	0.82	-2.15	
1760.00	30.150	81.380	1689.08	80.02	33.53	351.63	1712530.76	14272467.15	39°18'11.8586"N	80°44'42.2707"W	353.23	84.553	1.38	-0.16	-2.72	
1854.00	28.380	79.020	1771.08	87.02	41.32	396.91	1712576.01	14272474.94	39°18'11.9344"N	80°44'41.6945"W	399.06	84.056	2.25	-1.88	-2.51	
1949.00	26.350	76.660	1855.44	91.91	50.49	439.59	1712618.68	14272484.10	39°18'12.0238"N	80°44'41.1512"W	442.48	83.448	2.42	-2.14	-2.48	
2044.00	24.220	74.080	1941.34	94.71	60.70	478.85	1712657.92	14272494.31	39°18'12.1236"N	80°44'40.6514"W	482.69	82.775	2.52	-2.24	-2.72	
2139.00	22.900	71.360	2028.42	95.57	71.95	515.11	1712694.17	14272505.56	39°18'12.2338"N	80°44'40.1898"W	520.11	82.048	1.80	-1.39	-2.86	
2233.00	23.760	70.670	2114.74	95.27	84.07	550.31	1712729.35	14272517.67	39°18'12.3526"N	80°44'39.7416"W	556.69	81.314	0.96	0.91	-0.73	

WV Department of Environmental Protection

AUG 30 2021

RECEIVED
Office of Oil and Gas



Actual Wellpath Report

Peggy Unit 2H AWP Proj: 20152'

Page 3 of 12



REFERENCE WELLPATH IDENTIFICATION			
Operator	ANTERO RESOURCES CORPORATION	Well	Peggy Unit 2H
Field	Doddridge	API	47-017-06899-0000
Facility	Peggy June Pad	Wellbore	Peggy Unit 2H AWP
Slot	Slot #08		

WELLPATH DATA (228 stations)																
MD	Inclination	Azimuth	TVD	Vert Sect	North	East	Grid East	Grid North	Latitude	Longitude	Closure Dist	Closure Dir	DLS	Build Rate	Turn Rate	Comments
(ft)	(°)	(°)	(ft)	(ft)	(ft)	(ft)	(US ft)	(US ft)			(ft)	(°)	(°/100ft)	(°/100ft)	(°/100ft)	
2328.00	24.690	71.820	2201.37	95.13	96.59	587.22	1712766.25	14272530.19	39°18'12.4753"N	80°44'39.2716"W	595.11	80.659	1.10	0.98	1.21	
2423.00	24.290	69.760	2287.82	94.68	109.55	624.40	1712803.42	14272543.13	39°18'12.6023"N	80°44'38.7981"W	633.94	80.049	0.99	-0.42	-2.17	
2518.00	21.990	64.010	2375.19	91.79	124.10	658.73	1712837.73	14272557.68	39°18'12.7452"N	80°44'38.3609"W	670.32	79.331	3.39	-2.42	-6.05	
2612.00	21.100	60.260	2462.62	86.22	140.21	689.25	1712868.23	14272573.78	39°18'12.9035"N	80°44'37.9721"W	703.36	78.502	1.74	-0.95	-3.99	
2667.00	21.690	59.540	2513.83	82.20	150.27	706.60	1712885.58	14272583.84	39°18'13.0025"N	80°44'37.7510"W	722.41	77.994	1.17	1.07	-1.31	
2782.00	20.680	56.290	2621.06	72.50	172.32	741.81	1712920.78	14272605.88	39°18'13.2194"N	80°44'37.3022"W	761.57	76.923	1.35	-0.88	-2.83	remier MWD <8-3/4"> (2652')(2767'-6655')
2877.00	23.080	57.940	2709.21	63.75	191.51	771.55	1712950.51	14272625.07	39°18'13.4083"N	80°44'36.9232"W	794.97	76.060	2.61	2.53	1.74	
2972.00	24.330	59.960	2796.20	55.50	211.20	804.28	1712983.22	14272644.74	39°18'13.6019"N	80°44'36.5062"W	831.54	75.287	1.57	1.32	2.13	
3067.00	24.160	60.790	2882.82	48.00	230.48	838.19	1713017.12	14272664.02	39°18'13.7916"N	80°44'36.0742"W	869.30	74.625	0.40	-0.18	0.87	
3161.00	24.940	62.830	2968.32	41.46	248.92	872.61	1713051.53	14272682.45	39°18'13.9728"N	80°44'35.6356"W	907.42	74.079	1.23	0.83	2.17	
3256.00	25.100	61.090	3054.41	34.83	267.80	908.07	1713086.97	14272701.33	39°18'14.1585"N	80°44'35.1839"W	946.74	73.568	0.79	0.17	-1.83	
3351.00	25.100	58.540	3140.44	26.70	288.06	942.90	1713121.78	14272721.58	39°18'14.3578"N	80°44'34.7401"W	985.92	73.012	1.14	0.00	-2.68	
3448.00	24.780	60.090	3228.40	18.09	308.94	978.07	1713156.94	14272742.44	39°18'14.5631"N	80°44'34.2919"W	1025.70	72.471	0.75	-0.33	1.60	
3543.00	24.570	59.640	3314.72	10.12	328.85	1012.37	1713191.23	14272762.35	39°18'14.7589"N	80°44'33.8549"W	1064.44	72.005	0.30	-0.22	-0.47	
3637.00	24.150	60.530	3400.35	2.47	348.18	1045.97	1713224.82	14272781.68	39°18'14.9491"N	80°44'33.4267"W	1102.40	71.588	0.59	-0.45	0.95	
3732.00	23.920	63.300	3487.12	-3.95	366.40	1080.10	1713258.93	14272799.88	39°18'15.1282"N	80°44'32.9919"W	1140.55	71.262	1.21	-0.24	2.92	
3827.00	23.720	61.760	3574.03	-9.90	384.09	1114.14	1713292.95	14272817.57	39°18'15.3021"N	80°44'32.5583"W	1178.48	70.979	0.69	-0.21	-1.62	
3921.00	23.590	64.090	3660.13	-15.50	401.26	1147.71	1713326.52	14272834.73	39°18'15.4708"N	80°44'32.1305"W	1215.83	70.730	1.00	-0.14	2.48	
4016.00	23.600	63.500	3747.19	-20.57	418.05	1181.83	1713360.62	14272851.51	39°18'15.6358"N	80°44'31.6959"W	1253.59	70.520	0.25	0.01	-0.62	
4111.00	23.030	62.610	3834.43	-26.06	435.08	1215.35	1713394.12	14272868.54	39°18'15.8032"N	80°44'31.2689"W	1290.88	70.303	0.71	-0.60	-0.94	
4205.00	24.120	62.040	3920.59	-32.04	452.55	1248.64	1713427.40	14272886.00	39°18'15.9749"N	80°44'30.8448"W	1328.12	70.078	1.18	1.16	-0.61	
4300.00	24.740	62.270	4007.08	-38.39	470.90	1283.38	1713462.13	14272904.34	39°18'16.1553"N	80°44'30.4022"W	1367.04	69.851	0.66	0.65	0.24	
4395.00	24.080	61.190	4093.59	-45.02	489.49	1317.96	1713496.69	14272922.93	39°18'16.3380"N	80°44'29.9616"W	1405.92	69.625	0.84	-0.69	-1.14	
4489.00	23.610	61.340	4179.56	-51.75	507.76	1351.28	1713530.00	14272941.19	39°18'16.5177"N	80°44'29.5371"W	1443.53	69.406	0.50	-0.50	0.16	
4584.00	23.580	62.290	4266.62	-58.12	525.72	1384.79	1713563.50	14272959.14	39°18'16.6942"N	80°44'29.1101"W	1481.23	69.211	0.40	-0.03	1.00	
4679.00	24.580	62.400	4353.35	-64.26	543.71	1419.13	1713597.82	14272977.12	39°18'16.8711"N	80°44'28.6727"W	1519.72	69.037	1.05	1.05	0.12	
4773.00	24.180	63.230	4438.97	-70.09	561.44	1453.64	1713632.32	14272994.85	39°18'17.0453"N	80°44'28.2330"W	1558.29	68.882	0.56	-0.43	0.88	
4868.00	24.570	63.310	4525.50	-75.68	579.07	1488.66	1713667.33	14273012.47	39°18'17.2186"N	80°44'27.7869"W	1597.32	68.744	0.41	0.41	0.08	
4963.00	25.410	62.260	4611.61	-81.73	597.43	1524.34	1713703.00	14273030.82	39°18'17.3991"N	80°44'27.3322"W	1637.24	68.598	1.00	0.88	-1.11	
5058.00	24.350	60.540	4697.79	-88.70	616.55	1559.44	1713738.08	14273049.94	39°18'17.5870"N	80°44'26.8851"W	1676.90	68.428	1.35	-1.12	-1.81	

RECEIVED
 Office of Oil and Gas
 WV Department of
 Environmental Protection
 AUG 30 2021



Actual Wellpath Report

Peggy Unit 2H AWP Proj: 20152'

Page 4 of 12



REFERENCE WELLPATH IDENTIFICATION			
Operator	ANTERO RESOURCES CORPORATION	Well	Peggy Unit 2H
Field	Doddridge	API	47-017-06899-0000
Facility	Peggy June Pad	Wellbore	Peggy Unit 2H AWB
Slot	Slot #08		

WELLPATH DATA (228 stations) † = interpolated, ‡ = extrapolated station																
MD	Inclination	Azimuth	TVD	Vert Sect	North	East	Grid East	Grid North	Latitude	Longitude	Closure Dist	Closure Dir	DLS	Build Rate	Turn Rate	Comments
(ft)	(°)	(°)	(ft)	(ft)	(ft)	(ft)	(US ft)	(US ft)			(ft)	(°)	("/100ft)	("/100ft)	("/100ft)	
5152.00	24.640	61.520	4783.33	-95.76	635.43	1593.53	1713772.16	14273068.80	39°18'17.7726"N	80°44'26.4506"W	1715.55	68.260	0.53	0.31	1.04	
5247.00	24.880	61.150	4869.60	-102.75	654.51	1628.44	1713807.06	14273087.88	39°18'17.9603"N	80°44'26.0058"W	1755.05	68.104	0.30	0.25	-0.39	
5342.00	24.940	58.830	4955.76	-110.71	674.52	1663.09	1713841.69	14273107.88	39°18'18.1571"N	80°44'25.5644"W	1794.67	67.923	1.03	0.06	-2.44	
5436.00	24.300	59.420	5041.22	-119.08	694.62	1696.70	1713875.28	14273127.97	39°18'18.3547"N	80°44'25.1361"W	1833.38	67.736	0.73	-0.68	0.63	
5535.00	24.100	58.920	5131.52	-127.71	715.42	1731.54	1713910.12	14273148.76	39°18'18.5593"N	80°44'24.6921"W	1873.52	67.551	0.29	-0.20	-0.51	
5630.00	25.330	58.480	5217.81	-136.49	736.05	1765.48	1713944.04	14273169.39	39°18'18.7623"N	80°44'24.2596"W	1912.77	67.368	1.31	1.29	-0.46	
5724.00	24.570	61.020	5303.04	-144.55	756.04	1799.72	1713978.27	14273189.37	39°18'18.9588"N	80°44'23.8233"W	1952.07	67.213	1.40	-0.81	2.70	
5818.00	24.570	62.180	5388.53	-151.24	774.63	1834.10	1714012.63	14273207.95	39°18'19.1416"N	80°44'23.3853"W	1990.97	67.103	0.51	0.00	1.23	
5913.00	25.380	62.770	5474.65	-157.50	793.16	1869.67	1714048.19	14273226.47	39°18'19.3238"N	80°44'22.9321"W	2030.95	67.012	0.89	0.85	0.62	
6008.00	25.430	63.470	5560.46	-163.41	811.59	1906.02	1714084.53	14273244.89	39°18'19.5049"N	80°44'22.4690"W	2071.62	66.936	0.32	0.05	0.74	
6102.00	23.780	60.400	5645.93	-169.86	829.96	1940.56	1714119.05	14273263.26	39°18'19.6855"N	80°44'22.0289"W	2110.60	66.844	2.22	-1.76	-3.27	
6197.00	23.180	59.790	5733.06	-177.31	848.83	1973.37	1714151.85	14273282.13	39°18'19.8711"N	80°44'21.6108"W	2148.19	66.725	0.68	-0.63	-0.64	
6291.00	22.590	60.310	5819.66	-184.55	867.08	2005.05	1714183.51	14273300.37	39°18'20.0506"N	80°44'21.2072"W	2184.50	66.614	0.66	-0.63	0.55	
6386.00	22.530	61.380	5907.39	-191.26	884.84	2036.87	1714215.33	14273318.12	39°18'20.2251"N	80°44'20.8017"W	2220.76	66.519	0.44	-0.06	1.13	
6481.00	23.150	59.730	5994.94	-198.24	902.97	2068.98	1714247.42	14273336.24	39°18'20.4034"N	80°44'20.3926"W	2257.44	66.422	0.94	0.65	-1.74	
6575.00	24.670	57.830	6080.88	-206.62	922.73	2101.55	1714279.97	14273355.99	39°18'20.5978"N	80°44'19.9776"W	2295.20	66.295	1.81	1.62	-2.02	
6670.00	24.520	55.930	6167.26	-216.57	944.33	2134.66	1714313.07	14273377.59	39°18'20.8103"N	80°44'19.5556"W	2334.21	66.136	0.85	-0.16	-2.00	
6733.00	24.120	51.700	6224.67	-224.42	959.63	2155.59	1714334.00	14273392.88	39°18'20.9610"N	80°44'19.2887"W	2359.55	66.002	2.84	-0.63	-6.71	BH AT Curve <8-1/2"> (6670')(6733'-20127')
6828.00	20.880	63.950	6312.48	-233.21	979.11	2186.06	1714364.45	14273412.36	39°18'21.1527"N	80°44'18.9004"W	2395.31	65.873	5.98	-3.41	12.89	
6922.00	22.850	82.800	6399.82	-231.81	988.77	2219.26	1714397.64	14273422.01	39°18'21.2472"N	80°44'18.4777"W	2429.56	65.985	7.72	2.10	20.05	
7017.00	24.710	101.240	6486.87	-218.30	987.21	2257.09	1714435.46	14273420.45	39°18'21.2307"N	80°44'17.9965"W	2463.54	66.376	8.04	1.96	19.41	
7054.00†	26.017	106.351	6520.31	-209.81	983.42	2272.46	1714450.82	14273416.66	39°18'21.1927"N	80°44'17.8010"W	2476.13	66.599	6.89	3.53	13.81	Sycamore: 7054' MD
7111.00	28.340	113.290	6571.02	-193.63	974.55	2296.90	1714475.25	14273407.79	39°18'21.1043"N	80°44'17.4905"W	2495.09	67.009	6.89	4.08	12.17	
7206.00	33.390	125.310	6652.62	-157.43	950.48	2339.01	1714517.34	14273383.74	39°18'20.8653"N	80°44'16.9557"W	2524.75	67.885	8.37	5.32	12.65	
7300.00	39.400	137.790	6728.36	-109.11	913.35	2380.25	1714558.57	14273346.62	39°18'20.4971"N	80°44'16.4324"W	2549.47	69.007	10.12	6.39	13.28	
7302.00†	39.549	138.020	6729.90	-107.94	912.41	2381.10	1714559.42	14273345.68	39°18'20.4878"N	80°44'16.4216"W	2549.93	69.034	10.44	7.44	11.52	Middlesex: 7302' MD
7395.00	46.890	147.330	6797.70	-47.71	861.70	2419.32	1714597.63	14273294.99	39°18'19.9855"N	80°44'15.9373"W	2568.20	70.395	10.44	7.89	10.01	
7489.00	52.960	156.110	6858.25	23.06	798.38	2453.11	1714631.40	14273231.70	39°18'19.3587"N	80°44'15.5098"W	2579.76	71.972	9.62	6.46	9.34	
7515.00†	54.916	158.552	6873.56	44.02	778.99	2461.20	1714639.49	14273212.31	39°18'19.1668"N	80°44'15.4076"W	2581.54	72.437	10.69	7.52	9.39	Burkett: 7515' MD
7536.00	56.530	160.440	6885.39	61.36	762.74	2467.28	1714645.56	14273196.06	39°18'19.0060"N	80°44'15.3309"W	2582.48	72.821	10.69	7.69	8.99	

RECEIVED
 Office of Oil and Gas
 AUG 30 2021
 WV Department of
 Environmental Protection



Actual Wellpath Report

Peggy Unit 2H AWP Proj: 20152'

Page 5 of 12



REFERENCE WELLPATH IDENTIFICATION			
Operator	ANTERO RESOURCES CORPORATION	Well	Peggy Unit 2H
Field	Doddridge	API	47-017-06899-0000
Facility	Peggy June Pad	Wellbore	Peggy Unit 2H AWB
Slot	Slot #08		

WELLPATH DATA (228 stations) + = interpolated, * = extrapolated station																
MD	Inclination	Azimuth	TVD	Vert Sect	North	East	Grid East	Grid North	Latitude	Longitude	Closure Dist	Closure Dir	DLS	Build Rate	Turn Rate	Comments
(ft)	(°)	(°)	(ft)	(ft)	(ft)	(ft)	(US ft)	(US ft)			(ft)	(°)	("/100ft)	("/100ft)	("/100ft)	
7567.00†	58.947	161.986	6901.93	87.57	737.92	2475.71	1714653.99	14273171.26	39°18'18.7605"N	80°44'15.2245"W	2583.35	73.403	8.86	7.80	4.99	July: 7567' MD
7584.00	60.280	162.800	6910.53	102.23	723.94	2480.15	1714658.43	14273157.29	39°18'18.6222"N	80°44'15.1688"W	2583.65	73.728	8.86	7.84	4.79	
7679.00	68.280	162.790	6951.73	187.73	642.25	2505.45	1714683.71	14273075.63	39°18'17.8141"N	80°44'14.8498"W	2586.45	75.622	8.42	8.42	-0.01	
7714.00†	71.080	163.321	6963.88	220.53	610.86	2515.01	1714693.27	14273044.24	39°18'17.5035"N	80°44'14.7293"W	2588.13	76.348	8.13	8.00	1.52	Marcellus POE: 7714' MD
7720.00	71.560	163.410	6965.80	226.22	605.41	2516.64	1714694.90	14273038.80	39°18'17.4498"N	80°44'14.7088"W	2588.43	76.474	8.13	8.00	1.49	
7773.00	75.350	162.130	6980.89	277.00	556.90	2531.69	1714709.94	14272990.31	39°18'16.9697"N	80°44'14.5191"W	2592.21	77.594	7.52	7.15	-2.42	
7867.00	82.560	161.340	6998.89	369.19	469.35	2560.59	1714738.84	14272902.79	39°18'16.1036"N	80°44'14.1547"W	2603.25	79.613	7.71	7.67	-0.84	
7962.00	87.970	160.810	7006.73	463.83	379.82	2591.29	1714769.52	14272813.30	39°18'15.2179"N	80°44'13.7675"W	2618.98	81.661	5.72	5.69	-0.56	
8056.00	89.690	161.060	7008.65	557.80	291.00	2621.98	1714800.20	14272724.52	39°18'14.3391"N	80°44'13.3803"W	2638.08	83.667	1.85	1.83	0.27	
8151.00	89.570	158.460	7009.26	652.75	201.88	2654.85	1714833.05	14272635.43	39°18'13.4573"N	80°44'12.9655"W	2662.51	85.652	2.74	-0.13	-2.74	
8245.00	90.520	161.720	7009.19	746.71	113.51	2686.85	1714865.05	14272547.09	39°18'12.5830"N	80°44'12.5616"W	2689.25	87.581	3.61	1.01	3.47	
8340.00	90.890	159.960	7008.02	841.70	23.78	2718.03	1714896.21	14272457.40	39°18'11.6952"N	80°44'12.1684"W	2718.13	89.499	1.89	0.39	-1.85	
8434.00	89.910	159.180	7007.36	935.64	-64.30	2750.84	1714929.01	14272369.35	39°18'10.8237"N	80°44'11.7543"W	2751.59	91.339	1.33	-1.04	-0.83	
8529.00	90.030	159.060	7007.41	1030.56	-153.06	2784.70	1714962.85	14272280.63	39°18'9.9454"N	80°44'11.3268"W	2788.90	93.146	0.18	0.13	-0.13	
8623.00	90.430	158.640	7007.03	1124.46	-240.73	2818.61	1714996.76	14272192.99	39°18'9.0780"N	80°44'10.8886"W	2828.87	94.882	0.62	0.43	-0.45	
8718.00	90.150	158.990	7006.55	1219.36	-329.31	2852.94	1715031.07	14272104.45	39°18'8.2015"N	80°44'10.4652"W	2871.89	96.584	0.47	-0.29	0.37	
8812.00	88.950	157.850	7007.29	1313.22	-416.71	2887.51	1715065.63	14272017.08	39°18'7.3367"N	80°44'10.0287"W	2917.43	98.212	1.76	-1.28	-1.21	
8906.00	91.510	162.840	7006.91	1407.16	-505.20	2919.12	1715097.22	14271928.63	39°18'6.4612"N	80°44'9.6299"W	2962.51	99.819	5.97	2.72	5.31	
9001.00	90.340	162.130	7005.38	1502.14	-595.78	2947.71	1715125.80	14271838.08	39°18'5.5651"N	80°44'9.2697"W	3007.31	101.427	1.44	-1.23	-0.75	
9095.00	90.310	162.060	7004.85	1596.13	-685.23	2976.60	1715154.69	14271748.67	39°18'4.6802"N	80°44'8.9054"W	3054.46	102.964	0.08	-0.03	-0.07	
9190.00	90.150	161.580	7004.47	1691.12	-775.49	3006.24	1715184.31	14271658.45	39°18'3.7873"N	80°44'8.5317"W	3104.66	104.465	0.53	-0.17	-0.51	
9284.00	90.650	162.410	7003.81	1785.12	-864.88	3035.30	1715213.36	14271569.09	39°18'2.9029"N	80°44'8.1654"W	3156.11	105.904	1.03	0.53	0.88	
9378.00	90.090	161.870	7003.20	1879.11	-954.35	3064.13	1715242.17	14271479.66	39°18'2.0178"N	80°44'7.8021"W	3209.31	107.300	0.83	-0.60	-0.57	
9473.00	88.980	159.690	7003.97	1974.09	-1044.04	3095.40	1715273.43	14271390.00	39°18'1.1304"N	80°44'7.4076"W	3266.73	108.639	2.57	-1.17	-2.29	
9567.00	91.510	163.500	7003.57	2068.06	-1133.21	3125.07	1715303.09	14271300.87	39°18'0.2482"N	80°44'7.0335"W	3324.19	109.932	4.87	2.69	4.05	
9662.00	90.830	162.670	7001.63	2163.01	-1224.08	3152.70	1715330.71	14271210.04	39°17'59.3493"N	80°44'6.6854"W	3382.00	111.219	1.13	-0.72	-0.87	
9757.00	89.080	159.420	7001.71	2257.99	-1313.91	3183.56	1715361.55	14271120.24	39°17'58.4605"N	80°44'6.2963"W	3444.04	112.427	3.89	-1.84	-3.42	
9852.00	91.420	162.150	7001.29	2352.96	-1403.60	3214.82	1715392.80	14271030.58	39°17'57.5731"N	80°44'5.9020"W	3507.87	113.586	3.78	2.46	2.87	
9946.00	88.950	160.080	7000.99	2446.95	-1492.53	3245.24	1715423.21	14270941.69	39°17'56.6933"N	80°44'5.5183"W	3572.00	114.698	3.43	-2.63	-2.20	
10041.00	90.120	159.800	7001.76	2541.91	-1581.76	3277.82	1715455.78	14270852.49	39°17'55.8104"N	80°44'5.1072"W	3639.52	115.760	1.27	1.23	-0.29	

RECEIVED
 Office of Oil and Gas
 AUG 30 2021
 WV Department of
 Environmental Protection



Actual Wellpath Report

Peggy Unit 2H AWP Proj: 20152'

Page 6 of 12



REFERENCE WELLPATH IDENTIFICATION			
Operator	ANTERO RESOURCES CORPORATION	Well	Peggy Unit 2H
Field	Doddridge	API	47-017-06899-0000
Facility	Peggy June Pad	Wellbore	Peggy Unit 2H AWP
Slot	Slot #08		

WELLPATH DATA (228 stations)

MD [ft]	Inclination [°]	Azimuth [°]	TVD [ft]	Vert Sect [ft]	North [ft]	East [ft]	Grid East [US ft]	Grid North [US ft]	Latitude	Longitude	Closure Dist [ft]	Closure Dir [°]	DLS [°/100ft]	Build Rate [°/100ft]	Turn Rate [°/100ft]	Comments
10136.00	89.540	163.040	7002.04	2636.90	-1671.80	3308.09	1715486.04	14270762.49	39°17'54.9197"N	80°44'4.7256"W	3706.53	116.811	3.46	-0.81	3.41	
10230.00	89.170	161.480	7003.10	2730.88	-1761.32	3336.73	1715514.66	14270673.01	39°17'54.0340"N	80°44'4.3646"W	3773.06	117.828	1.71	-0.39	-1.66	
10324.00	89.510	161.730	7004.18	2824.87	-1850.51	3366.39	1715544.31	14270583.85	39°17'53.1516"N	80°44'3.9907"W	3841.48	118.798	0.45	0.36	0.27	
10419.00	91.600	163.760	7003.26	2919.83	-1941.22	3394.56	1715572.48	14270493.18	39°17'52.2543"N	80°44'3.6357"W	3910.42	119.764	3.07	2.20	2.14	
10514.00	89.880	162.950	7002.04	3014.77	-2032.23	3421.77	1715599.68	14270402.21	39°17'51.3540"N	80°44'3.2930"W	3979.76	120.707	2.00	-1.81	-0.85	
10608.00	90.580	162.370	7001.66	3108.75	-2121.96	3449.79	1715627.68	14270312.51	39°17'50.4664"N	80°44'2.9400"W	4050.15	121.596	0.97	0.74	-0.62	
10703.00	90.740	163.270	7000.56	3203.71	-2212.71	3477.84	1715655.73	14270221.80	39°17'49.5686"N	80°44'2.5865"W	4122.07	122.466	0.96	0.17	0.95	
10798.00	89.910	163.540	7000.02	3298.66	-2303.75	3504.98	1715682.85	14270130.79	39°17'48.6680"N	80°44'2.2448"W	4194.30	123.316	0.92	-0.87	0.28	
10892.00	91.230	162.470	6999.09	3392.61	-2393.64	3532.45	1715710.31	14270040.94	39°17'47.7787"N	80°44'1.8987"W	4267.05	124.122	1.81	1.40	-1.14	
10986.00	90.280	163.380	6997.85	3486.57	-2483.48	3560.05	1715737.90	14269951.13	39°17'46.8899"N	80°44'1.5510"W	4340.69	124.900	1.40	-1.01	0.97	
11081.00	90.120	161.620	6997.52	3581.55	-2574.08	3588.61	1715766.45	14269860.57	39°17'45.9936"N	80°44'1.1911"W	4416.34	125.652	1.86	-0.17	-1.85	
11176.00	91.080	161.690	6996.52	3676.55	-2664.25	3618.51	1715796.34	14269770.44	39°17'45.1016"N	80°44'0.8141"W	4493.53	126.364	1.01	1.01	0.07	
11270.00	90.920	161.870	6994.88	3770.53	-2753.52	3647.90	1715825.71	14269681.20	39°17'44.2184"N	80°44'0.4437"W	4570.45	127.046	0.26	-0.17	0.19	
11364.00	89.910	161.540	6994.20	3864.53	-2842.77	3677.40	1715855.21	14269591.99	39°17'43.3355"N	80°44'0.0718"W	4648.08	127.705	1.13	-1.07	-0.35	
11459.00	90.490	161.770	6993.87	3959.52	-2932.94	3707.30	1715885.09	14269501.85	39°17'42.4434"N	80°43'59.6948"W	4727.18	128.348	0.66	0.61	0.24	
11553.00	89.570	161.450	6993.82	4053.52	-3022.14	3736.96	1715914.74	14269412.69	39°17'41.5609"N	80°43'59.3210"W	4806.06	128.963	1.04	-0.98	-0.34	
11647.00	90.710	161.750	6993.59	4147.52	-3111.33	3766.63	1715944.40	14269323.53	39°17'40.6785"N	80°43'58.9469"W	4885.47	129.558	1.25	1.21	0.32	
11742.00	90.550	161.700	6992.55	4242.51	-3201.53	3796.42	1715974.17	14269233.37	39°17'39.7861"N	80°43'58.5714"W	4966.14	130.141	0.18	-0.17	-0.05	
11837.00	90.770	161.690	6991.45	4337.51	-3291.72	3826.25	1716004.00	14269143.21	39°17'38.8938"N	80°43'58.1953"W	5047.34	130.705	0.23	0.23	-0.01	
11931.00	91.880	160.500	6989.28	4431.48	-3380.62	3856.70	1716034.43	14269054.35	39°17'38.0143"N	80°43'57.8114"W	5128.62	131.236	1.73	1.18	-1.27	
12025.00	91.110	161.810	6986.83	4525.44	-3469.55	3887.05	1716064.77	14268965.45	39°17'37.1344"N	80°43'57.4287"W	5210.27	131.752	1.62	-0.82	1.39	
12120.00	89.970	161.350	6985.93	4620.43	-3559.68	3917.07	1716094.77	14268875.36	39°17'36.2428"N	80°43'57.0503"W	5292.89	132.263	1.29	-1.20	-0.48	
12214.00	91.110	161.590	6985.05	4714.43	-3648.80	3946.94	1716124.63	14268786.28	39°17'35.3611"N	80°43'56.6737"W	5375.13	132.752	1.24	1.21	0.26	
12309.00	90.800	161.880	6983.46	4809.41	-3739.00	3976.71	1716154.39	14268696.11	39°17'34.4687"N	80°43'56.2985"W	5458.42	133.235	0.45	-0.33	0.31	
12403.00	91.910	162.350	6981.24	4903.38	-3828.43	4005.57	1716183.24	14268606.72	39°17'33.5839"N	80°43'55.9348"W	5540.89	133.705	1.28	1.18	0.50	
12498.00	89.630	160.960	6979.96	4998.36	-3918.59	4035.46	1716213.12	14268516.80	39°17'32.6920"N	80°43'55.5580"W	5624.97	134.158	2.81	-2.40	-1.46	
12593.00	90.710	163.310	6979.68	5093.35	-4009.00	4064.60	1716242.25	14268426.22	39°17'31.7975"N	80°43'55.1907"W	5709.03	134.605	2.72	1.14	2.47	
12687.00	89.260	163.490	6979.71	5187.29	-4099.08	4091.46	1716269.10	14268336.18	39°17'30.9064"N	80°43'54.8526"W	5791.58	135.053	1.55	-1.54	0.19	
12782.00	90.490	163.640	6979.91	5282.22	-4190.19	4118.33	1716295.96	14268245.10	39°17'30.0051"N	80°43'54.5141"W	5875.24	135.496	1.30	1.29	0.16	
12876.00	91.630	164.290	6978.17	5376.12	-4280.52	4144.29	1716321.91	14268154.81	39°17'29.1116"N	80°43'54.1874"W	5958.02	135.926	1.40	1.21	0.69	

RECEIVED
 Office of Oil and Gas
 WV Department of
 Environmental Protection
 AUG 30 2021



Actual Wellpath Report

Peggy Unit 2H AWP Proj: 20152'

Page 7 of 12



REFERENCE WELLPATH IDENTIFICATION			
Operator	ANTERO RESOURCES CORPORATION	Well	Peggy Unit 2H
Field	Doddridge	API	47-017-06899-0000
Facility	Peggy June Pad	Wellbore	Peggy Unit 2H AWB
Slot	Slot #08		

WELLPATH DATA (228 stations)																
MD [ft]	Inclination [°]	Azimuth [°]	TVD [ft]	Vert Sect [ft]	North [ft]	East [ft]	Grid East [US ft]	Grid North [US ft]	Latitude	Longitude	Closure Dist [ft]	Closure Dir [°]	DLS [°/100ft]	Build Rate [°/100ft]	Turn Rate [°/100ft]	Comments
12971.00	91.690	164.120	6975.42	5470.97	-4371.89	4170.14	1716347.75	14268063.47	39°17'28.2077"N	80°43'53.8621"W	6041.82	136.353	0.19	0.06	-0.18	
13065.00	91.880	162.180	6972.49	5564.88	-4461.81	4197.37	1716374.97	14267973.59	39°17'27.3182"N	80°43'53.5191"W	6125.82	136.749	2.07	0.20	-2.06	
13159.00	91.350	161.140	6969.84	5658.84	-4551.00	4226.94	1716404.53	14267864.43	39°17'26.4358"N	80°43'53.1464"W	6211.17	137.114	1.24	-0.56	-1.11	
13254.00	91.380	160.920	6967.58	5753.81	-4640.81	4257.81	1716435.39	14267794.66	39°17'25.5472"N	80°43'52.7572"W	6298.10	137.465	0.23	0.03	-0.23	
13348.00	90.520	159.400	6966.02	5847.77	-4729.22	4289.71	1716467.27	14267706.29	39°17'24.6725"N	80°43'52.3548"W	6384.91	137.790	1.86	-0.91	-1.62	
13443.00	91.260	160.280	6964.55	5942.71	-4818.39	4322.45	1716500.00	14267617.15	39°17'23.7903"N	80°43'51.9418"W	6473.05	138.106	1.21	0.78	0.93	
13538.00	91.910	160.840	6961.92	6037.67	-4907.93	4354.05	1716531.59	14267527.64	39°17'22.9043"N	80°43'51.5432"W	6560.91	138.422	0.90	0.68	0.59	
13632.00	89.750	159.700	6960.56	6131.63	-4996.40	4385.78	1716563.30	14267439.21	39°17'22.0290"N	80°43'51.1430"W	6648.24	138.724	2.60	-2.30	-1.21	
13727.00	91.570	159.960	6959.46	6226.58	-5085.56	4418.53	1716596.04	14267350.08	39°17'21.1467"N	80°43'50.7298"W	6736.94	139.015	1.94	1.92	0.27	
13821.00	90.180	161.270	6958.03	6320.55	-5174.22	4449.73	1716627.23	14267261.46	39°17'20.2696"N	80°43'50.3365"W	6824.42	139.305	2.03	-1.48	1.39	
13916.00	90.430	159.280	6957.52	6415.53	-5263.64	4481.79	1716659.27	14267172.07	39°17'19.3848"N	80°43'49.9321"W	6913.20	139.587	2.11	0.26	-2.09	
14010.00	90.520	159.580	6956.74	6509.47	-5351.64	4514.82	1716692.29	14267084.11	39°17'18.5140"N	80°43'49.5154"W	7001.69	139.848	0.33	0.10	0.32	
14105.00	91.720	160.310	6954.89	6604.41	-5440.86	4547.39	1716724.85	14266994.92	39°17'17.8313"N	80°43'49.1045"W	7090.96	140.112	1.48	1.26	0.77	
14199.00	91.200	161.070	6952.49	6698.37	-5529.55	4578.46	1716755.91	14266906.27	39°17'16.7538"N	80°43'48.7127"W	7179.01	140.375	0.98	-0.55	0.81	
14294.00	89.690	159.060	6951.75	6793.33	-5618.84	4610.85	1716788.28	14266817.01	39°17'15.8703"N	80°43'48.3042"W	7268.52	140.628	2.65	-1.59	-2.12	
14388.00	90.680	158.820	6951.45	6887.24	-5706.56	4644.62	1716822.04	14266729.33	39°17'15.0023"N	80°43'47.8779"W	7357.81	140.858	1.08	1.05	-0.26	
14483.00	91.050	158.990	6950.02	6982.13	-5795.19	4678.81	1716856.22	14266640.74	39°17'14.1254"N	80°43'47.4465"W	7448.19	141.084	0.43	0.39	0.18	
14578.00	90.580	160.990	6948.66	7077.09	-5884.44	4711.32	1716888.71	14266551.52	39°17'13.2423"N	80°43'47.0365"W	7538.11	141.318	2.16	-0.49	2.11	
14672.00	90.430	160.420	6947.84	7171.08	-5973.16	4742.37	1716919.76	14266462.84	39°17'12.3645"N	80°43'46.6449"W	7626.84	141.552	0.63	-0.16	-0.61	
14767.00	91.140	160.970	6946.53	7266.06	-6062.80	4773.78	1716951.15	14266373.23	39°17'11.4775"N	80°43'46.2489"W	7716.64	141.784	0.95	0.75	0.58	
14862.00	90.770	160.940	6944.95	7361.04	-6152.59	4804.77	1716982.13	14266283.48	39°17'10.5892"N	80°43'45.8581"W	7806.42	142.012	0.39	-0.39	-0.03	
14956.00	90.520	160.260	6943.89	7455.02	-6241.25	4835.99	1717013.34	14266194.85	39°17'9.7120"N	80°43'45.4644"W	7895.57	142.230	0.77	-0.27	-0.72	
15051.00	89.290	160.380	6944.05	7550.00	-6330.70	4867.99	1717045.32	14266105.44	39°17'8.8270"N	80°43'45.0610"W	7985.93	142.442	1.30	-1.29	0.13	
15145.00	91.170	162.910	6943.67	7643.99	-6419.90	4897.58	1717074.90	14266016.27	39°17'7.9444"N	80°43'44.6879"W	8074.74	142.661	3.35	2.00	2.69	
15240.00	91.020	162.320	6941.86	7738.95	-6510.55	4925.96	1717103.27	14265925.66	39°17'7.0477"N	80°43'44.3305"W	8164.09	142.888	0.64	-0.16	-0.62	
15334.00	91.110	162.810	6940.11	7832.92	-6600.21	4954.12	1717131.42	14265836.03	39°17'6.1606"N	80°43'43.9758"W	8252.64	143.108	0.53	0.10	0.52	
15429.00	91.230	163.260	6938.17	7927.86	-6691.06	4981.84	1717159.12	14265745.22	39°17'5.2619"N	80°43'43.6268"W	8342.00	143.330	0.49	0.13	0.47	
15523.00	89.780	162.160	6937.34	8021.83	-6780.80	5009.77	1717187.05	14265655.51	39°17'4.3741"N	80°43'43.2749"W	8430.72	143.542	1.94	-1.54	-1.17	
15617.00	90.580	162.070	6937.05	8115.83	-6870.26	5038.64	1717215.90	14265566.09	39°17'3.4891"N	80°43'42.9112"W	8519.88	143.744	0.86	0.85	-0.10	
15711.00	90.770	163.240	6935.94	8209.80	-6959.98	5066.66	1717243.91	14265476.41	39°17'2.6015"N	80°43'42.5583"W	8608.85	143.946	1.26	0.20	1.24	

RECEIVED
 Office of Oil and Gas
 AUG 30 2021
 WV Department of
 Environmental Protection



Actual Wellpath Report

Peggy Unit 2H AWP Proj: 20152'

Page 8 of 12



REFERENCE WELLPATH IDENTIFICATION			
Operator	ANTERO RESOURCES CORPORATION	Well	Peggy Unit 2H
Field	Doddridge	API	47-017-06899-0000
Facility	Peggy June Pad	Wellbore	Peggy Unit 2H AWB
Slot	Slot #08		

WELLPATH DATA (228 stations)																
MD (ft)	Inclination (°)	Azimuth (°)	TVD (ft)	Vert Sect (ft)	North (ft)	East (ft)	Grid East (US ft)	Grid North (US ft)	Latitude	Longitude	Closure Dist (ft)	Closure Dir (°)	DLS (°/100ft)	Build Rate (°/100ft)	Turn Rate (°/100ft)	Comments
15805.00	91.750	162.570	6933.87	8303.74	-7049.80	5094.29	1717271.53	14265386.62	39°17'1.7129"N	80°43'42.2104"W	8697.78	144.148	1.26	1.04	-0.71	
15900.00	92.060	163.150	6930.71	8398.66	-7140.53	5122.27	1717299.50	14265295.93	39°17'0.8153"N	80°43'41.8580"W	8787.76	144.346	0.69	0.33	0.61	
15994.00	92.000	162.710	6927.38	8492.57	-7230.33	5149.84	1717327.06	14265206.16	39°16'59.9269"N	80°43'41.5107"W	8876.86	144.539	0.47	-0.06	-0.47	
16089.00	91.970	163.210	6924.09	8587.48	-7321.11	5177.66	1717354.87	14265115.42	39°16'59.0289"N	80°43'41.1604"W	8966.99	144.731	0.53	-0.03	0.53	
16184.00	91.690	162.110	6921.06	8682.41	-7411.74	5205.96	1717383.16	14265024.82	39°16'58.1322"N	80°43'40.8040"W	9057.37	144.916	1.19	-0.29	-1.16	
16278.00	90.710	162.680	6919.09	8776.38	-7501.32	5234.39	1717411.57	14264935.28	39°16'57.2461"N	80°43'40.4459"W	9147.05	145.093	1.21	-1.04	0.61	
16373.00	90.770	162.760	6917.86	8871.35	-7592.02	5262.60	1717439.78	14264844.61	39°16'56.3487"N	80°43'40.0906"W	9237.63	145.271	0.11	0.06	0.08	
16468.00	90.000	162.980	6917.23	8966.31	-7682.81	5290.58	1717467.75	14264753.87	39°16'55.4506"N	80°43'39.7382"W	9328.23	145.448	0.84	-0.81	0.23	
16562.00	89.970	162.590	6917.25	9060.29	-7772.60	5318.40	1717495.56	14264664.11	39°16'54.5624"N	80°43'39.3879"W	9418.00	145.618	0.42	-0.03	-0.41	
16657.00	90.120	162.590	6917.18	9155.27	-7863.24	5346.83	1717523.97	14264573.50	39°16'53.6656"N	80°43'39.0298"W	9508.90	145.785	0.16	0.16	0.00	
16752.00	90.550	163.410	6916.62	9250.23	-7954.09	5374.60	1717551.73	14264482.69	39°16'52.7668"N	80°43'38.6801"W	9599.68	145.953	0.97	0.45	0.86	
16846.00	90.090	163.170	6916.10	9344.18	-8044.12	5401.63	1717578.75	14264392.70	39°16'51.8762"N	80°43'38.3399"W	9689.45	146.119	0.55	-0.49	-0.26	
16941.00	91.170	163.900	6915.05	9439.11	-8135.22	5428.55	1717605.66	14264301.64	39°16'50.9751"N	80°43'38.0010"W	9780.13	146.285	1.37	1.14	0.77	
17035.00	90.620	161.730	6913.58	9533.07	-8225.00	5456.32	1717633.42	14264211.89	39°16'50.0868"N	80°43'37.6513"W	9870.26	146.440	2.38	-0.59	-2.31	
17130.00	89.850	160.000	6913.19	9628.06	-8314.75	5487.46	1717664.55	14264122.17	39°16'49.1988"N	80°43'37.2588"W	9962.29	146.576	1.99	-0.81	-1.82	
17225.00	90.460	161.200	6912.94	9723.05	-8404.35	5519.02	1717696.09	14264032.61	39°16'48.3123"N	80°43'36.8609"W	10054.49	146.708	1.42	0.64	1.26	
17319.00	90.400	161.200	6912.23	9817.04	-8493.33	5549.31	1717726.37	14263943.66	39°16'47.4319"N	80°43'36.4791"W	10145.52	146.841	0.06	-0.06	0.00	
17414.00	90.090	160.900	6911.82	9912.04	-8583.19	5580.16	1717757.21	14263853.84	39°16'46.5429"N	80°43'36.0903"W	10237.64	146.971	0.45	-0.33	-0.32	
17509.00	90.150	159.450	6911.63	10007.01	-8672.55	5612.38	1717789.41	14263764.51	39°16'45.6587"N	80°43'35.6840"W	10330.15	147.091	1.53	0.06	-1.53	
17604.00	90.370	159.880	6911.19	10101.96	-8761.63	5645.39	1717822.41	14263675.47	39°16'44.7773"N	80°43'35.2676"W	10422.89	147.205	0.51	0.23	0.45	
17698.00	90.650	162.100	6910.36	10195.95	-8850.49	5676.01	1717853.02	14263586.64	39°16'43.8981"N	80°43'34.8817"W	10514.19	147.327	2.38	0.30	2.36	
17793.00	90.060	160.140	6909.77	10290.94	-8940.38	5706.74	1717883.74	14263496.79	39°16'43.0088"N	80°43'34.4943"W	10606.47	147.449	2.15	-0.62	-2.06	
17887.00	90.310	160.460	6909.47	10384.92	-9028.87	5738.43	1717915.42	14263408.33	39°16'42.1332"N	80°43'34.0947"W	10698.14	147.561	0.43	0.27	0.34	
17982.00	90.000	159.380	6909.21	10479.89	-9118.10	5771.05	1717948.02	14263319.14	39°16'41.2503"N	80°43'33.6834"W	10790.95	147.669	1.18	-0.33	-1.14	
18076.00	90.550	160.210	6908.76	10573.84	-9206.31	5803.51	1717980.47	14263230.97	39°16'40.3775"N	80°43'33.2740"W	10882.87	147.773	1.06	0.59	0.88	
18171.00	90.550	161.030	6907.85	10668.83	-9295.92	5835.03	1718011.98	14263141.39	39°16'39.4908"N	80°43'32.8766"W	10975.51	147.884	0.86	0.00	0.86	
18266.00	89.970	159.760	6907.41	10763.81	-9385.41	5866.91	1718043.84	14263051.93	39°16'38.6054"N	80°43'32.4747"W	11068.27	147.990	1.47	-0.61	-1.34	
18360.00	91.020	161.680	6906.60	10857.79	-9474.13	5897.94	1718074.87	14262963.25	39°16'37.7276"N	80°43'32.0835"W	11159.97	148.096	2.33	1.12	2.04	
18455.00	90.220	160.380	6905.57	10952.78	-9563.97	5928.82	1718105.73	14262873.45	39°16'36.8388"N	80°43'31.6943"W	11252.57	148.205	1.61	-0.84	-1.37	
18549.00	90.090	160.320	6905.32	11046.76	-9652.49	5960.43	1718137.33	14262784.96	39°16'35.9629"N	80°43'31.2957"W	11344.48	148.305	0.15	-0.14	-0.06	

WV Department of
Environmental Protection

AUG 30 2021

RECEIVED
Office of Oil and Gas



Actual Wellpath Report

Peggy Unit 2H AWP Proj: 20152'

Page 9 of 12



REFERENCE WELLPATH IDENTIFICATION			
Operator	ANTERO RESOURCES CORPORATION	Well	Peggy Unit 2H
Field	Doddridge	API	47-017-06899-0000
Facility	Peggy June Pad	Wellbore	Peggy Unit 2H AWB
Slot	Slot #08		

WELLPATH DATA (228 stations) † = interpolated, ‡ = extrapolated station																
MD (ft)	Inclination (°)	Azimuth (°)	TVD (ft)	Vert Sect (ft)	North (ft)	East (ft)	Grid East (US ft)	Grid North (US ft)	Latitude	Longitude	Closure Dist (ft)	Closure Dir (°)	DLS ("/100ft)	Build Rate ("/100ft)	Turn Rate ("/100ft)	Comments
18544.00	90.370	161.080	6904.94	11141.75	-9742.15	5991.83	1718168.72	14262695.34	39°16'35.0758"N	80°43'30.8999"W	11437.29	148.407	0.85	0.29	0.80	
18738.00	90.180	160.680	6904.49	11235.75	-9830.96	6022.62	1718199.49	14262606.56	39°16'34.1970"N	80°43'30.5119"W	11529.08	148.508	0.47	-0.20	-0.43	
18833.00	90.800	160.760	6903.67	11330.74	-9920.63	6053.99	1718230.85	14262516.93	39°16'33.3099"N	80°43'30.1165"W	11621.95	148.607	0.66	0.65	0.08	
18927.00	90.310	160.990	6902.76	11424.73	-10009.44	6084.78	1718261.63	14262428.16	39°16'32.4312"N	80°43'29.7283"W	11713.81	148.704	0.58	-0.52	0.24	
19022.00	91.230	161.710	6901.49	11519.72	-10099.44	6115.16	1718292.00	14262338.19	39°16'31.5407"N	80°43'29.3455"W	11806.52	148.805	1.23	0.97	0.76	
19116.00	89.910	159.700	6900.55	11613.70	-10188.15	6146.21	1718323.04	14262249.52	39°16'30.6630"N	80°43'28.9540"W	11898.50	148.899	2.56	-1.40	-2.14	
19211.00	89.910	159.870	6900.70	11708.65	-10277.30	6179.04	1718355.85	14262160.40	39°16'29.7809"N	80°43'28.5401"W	11991.81	148.984	0.18	0.00	0.18	
19306.00	90.150	159.990	6900.65	11803.62	-10366.53	6211.64	1718388.44	14262071.21	39°16'28.8980"N	80°43'28.1290"W	12085.09	149.070	0.28	0.25	0.13	
19400.00	90.060	162.080	6900.48	11897.61	-10455.42	6242.19	1718418.98	14261982.35	39°16'28.0185"N	80°43'27.7440"W	12177.06	149.162	2.23	-0.10	2.22	
19495.00	90.280	162.280	6900.20	11992.60	-10545.86	6271.26	1718448.04	14261891.94	39°16'27.1237"N	80°43'27.3776"W	12269.64	149.262	0.31	0.23	0.21	
19590.00	90.280	162.070	6899.73	12087.60	-10636.30	6300.34	1718477.11	14261801.54	39°16'26.2290"N	80°43'27.0115"W	12362.25	149.360	0.22	0.00	-0.22	
19684.00	90.180	162.960	6899.36	12181.58	-10725.96	6328.58	1718505.34	14261711.92	39°16'25.3420"N	80°43'26.6559"W	12453.80	149.458	0.95	-0.11	0.95	
19779.00	90.310	163.820	6898.95	12276.52	-10816.99	6355.74	1718532.48	14261620.92	39°16'24.4414"N	80°43'26.3141"W	12546.02	149.563	0.92	0.14	0.91	
19873.00	89.780	162.280	6898.88	12370.48	-10906.90	6383.14	1718559.88	14261531.05	39°16'23.5519"N	80°43'25.9692"W	12637.45	149.662	1.73	-0.56	-1.64	
19968.00	89.540	162.840	6899.44	12465.46	-10997.54	6411.62	1718588.34	14261440.45	39°16'22.6553"N	80°43'25.6107"W	12730.07	149.758	0.64	-0.25	0.59	
20063.00	89.880	162.510	6899.92	12560.44	-11088.22	6439.90	1718616.61	14261349.80	39°16'21.7581"N	80°43'25.2545"W	12822.68	149.853	0.50	0.36	-0.35	
20127.00	89.780	162.510	6900.11	12624.43	-11149.26	6459.14	1718635.84	14261288.78	39°16'21.1542"N	80°43'25.0123"W	12885.13	149.915	0.16	-0.16	0.00	
20152.00†	89.780	162.510	6900.21	12649.43	-11173.11	6466.65	1718643.35	14261264.95	39°16'20.9183"N	80°43'24.9176"W	12909.53	149.939	0.00	0.00	0.00	Projected MD at TD: 20152'

RECEIVED
 Office of Oil and Gas
 AUG 30 2021
 WY Department of
 Environmental Protection



Actual Wellpath Report

Peggy Unit 2H AWP Proj: 20152'

Page 10 of 12



REFERENCE WELLPATH IDENTIFICATION

Operator	ANTERO RESOURCES CORPORATION	Well	Peggy Unit 2H
Field	Doddridge	API	47-017-06899-0000
Facility	Peggy June Pad	Wellbore	Peggy Unit 2H AWB
Slot	Slot #08		

HOLE & CASING SECTIONS - Ref Wellbore: Peggy Unit 2H AWB Ref Wellpath: Peggy Unit 2H AWP Proj: 20152'

String/Diameter	Start MD [ft]	End MD [ft]	Interval [ft]	Start TVD [ft]	End TVD [ft]	Start N/S [ft]	Start E/W [ft]	End N/S [ft]	End E/W [ft]
20in Conductor	30.00	110.00	80.00	30.00	110.00	0.00	0.00	-0.02	0.08
17.5in Open Hole	110.00	448.80	338.80	110.00	448.79	-0.02	0.08	-1.68	0.87
13.375in Casing Surface	30.00	448.80	418.80	30.00	448.79	0.00	0.00	-1.68	0.87
12.25in Open Hole	448.80	2752.60	2303.80	448.79	2593.58	-1.68	0.87	166.59	733.08
9.625in Casing Intermediate	30.00	2752.60	2722.60	30.00	2593.58	0.00	0.00	166.59	733.08
8.75in Open Hole	2752.60	6737.00	3984.40	2593.58	6228.32	166.59	733.08	960.64	2156.87
8.5in Open Hole	6737.00	20152.00	13415.00	6228.32	6900.21	960.64	2156.87	-11173.11	6466.65
5.5in Casing Production	30.00	20152.00	20122.00	30.00	6900.21	0.00	0.00	-11173.11	6466.65

TARGETS

Name	TVD [ft]	North [ft]	East [ft]	Grid East [US ft]	Grid North [US ft]	Latitude	Longitude	Shape
Peggy Unit 2H POE Rev-2	6963.00	590.60	2518.74	1714697.00	14273024.00	39°18'17.3032"N	80°44'14.6826"W	point
Peggy Unit 2H BHL Rev-2	7006.00	-11173.06	6463.30	1718640.00	14261265.00	39°16'20.9190"N	80°43'24.9603"W	point
Peggy Unit 2H LP Rev-2	7006.00	361.79	2595.46	1714773.69	14272795.28	39°18'15.0395"N	80°44'13.7150"W	point
Peggy Unit 2H 50' L/R Hard Line2	7250.00	-5291.23	4491.02	1716668.50	14267144.50	39°17'19.1119"N	80°43'49.8158"W	rectangle
2D Rectangle 12407.4 x 100.								

RECEIVED
 Office of Oil and Gas
 Environmental Protection
 WV Department of
 Environmental Protection
 AUG 30 2021



Actual Wellpath Report

Peggy Unit 2H AWP Proj: 20152'

Page 11 of 12



REFERENCE WELLPATH IDENTIFICATION

Operator	ANTERO RESOURCES CORPORATION	Well	Peggy Unit 2H
Field	Doddridge	API	47-017-06899-0000
Facility	Peggy June Pad	Wellbore	Peggy Unit 2H AWB
Slot	Slot #08		

WELLPATH COMPOSITION - Ref Wellbore: Peggy Unit 2H AWB Ref Wellpath: Peggy Unit 2H AWP Proj: 20152'

Start MD (ft)	End MD (ft)	Positional Uncertainty Model	Log Name/Comment	Wellbore	Survey Date
30.00	465.00	Gyrodatta 2015 - GC+WIR+DPIPE	01 Gyrodatta MS Gyro <17-1/2"> (100'-450')	Peggy Unit 2H AWB	14/Dec/2020
465.00	2667.00	OWSG MWD rev2 + HRGM	02 Premier MWD <12-1/4"> (450')(490'-2652')	Peggy Unit 2H AWB	14/Dec/2020
2667.00	6670.00	OWSG MWD rev2 + HRGM	03 Premier MWD <8-3/4"> (2652')(2767'-6655')	Peggy Unit 2H AWB	14/Dec/2020
6670.00	20152.00	BH AutoTrak Curve/eXpress (2019) (HRGM, Short spacing)	04 BH AT Curve <8-1/2"> (6670')(6733'-20127')	Peggy Unit 2H AWB	22/Dec/2020

WV Department of
Environmental Protection

AUG 30 2021

RECEIVED
Office of Oil and Gas



Actual Wellpath Report

Peggy Unit 2H AWP Proj: 20152'
Page 12 of 12



REFERENCE WELLPATH IDENTIFICATION			
Operator	ANTERO RESOURCES CORPORATION	Well	Peggy Unit 2H
Field	Doddridge	API	47-017-06899-0000
Facility	Peggy June Pad	Wellbore	Peggy Unit 2H AWB
Slot	Slot #08		

COMMENTS

Wellpath general comments

API: 47-017-06899-0000
BH Job #: 110695165
Rig: H&P 519
Duration: 12/24/2020-1/8/2021
Gyrodatta MS Gyro <17-1/2"> (100'-450')
Premier MWD <12-1/4"> (450')(490'-2652')
Premier MWD <8-3/4"> (2652')(2767'-6655')
BH AT Curve <8-1/2"> (6670')(6733'-20127')
Sycamore: 7054' MD
Middlesex: 7302' MD
Burkett: 7515' MD
Tully: 7567' MD
Marcellus POE: 7714' MD
Projected MD at TD: 20152'

RECEIVED

Office of Oil and Gas

AUG 30 2021

WV Department of
Environmental Protection