



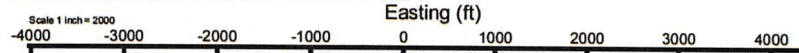
# ANTERO RESOURCES CORPORATION

Location: Doddridge Co., WV  
 Field: Doddridge  
 Facility: Genevieve Pad

Slot: Slot D  
 Well: Dixie Unit 2H  
 Wellbore: Dixie Unit 2H PWB



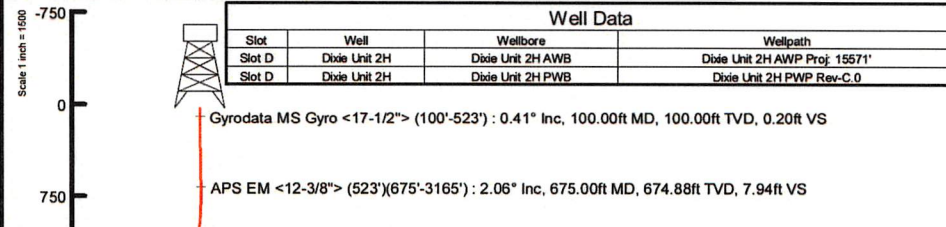
Plot reference wellpath is Dixie Unit 2H PWP Rev-C.0	Grid System: NAD27 / UTM Zone 17 North, US feet
True vertical depths are referenced to H&P 519 (RKB)	North Reference: Grid north
Reference wellpath measured depths are referenced to H&P 519 (RKB)	Scale: True distance
H&P 519 (RKB) to Mean Sea Level: 916 feet	Coordinates are in feet referenced to Slot
Mean Sea Level to Ground level (At Slot: Slot D): -886 feet	Depths are in feet
Offset wellpath MDs are referenced to each path's default MD datum	Created by: edsajay on 2024-04-12; Database: WA_MPL_EASTERNUS_Defn



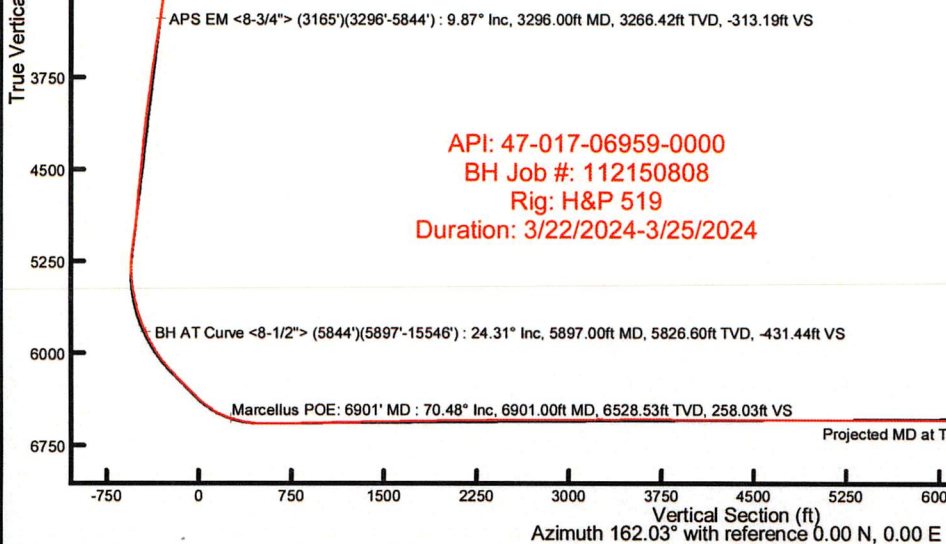
Location Information				
Facility Name	Grid East (US ft)	Grid North (US ft)	Latitude	Longitude
Genevieve Pad	1702116.720	14272528.020	39°18'12.7297"N	80°46'54.7976"W
Slot	Local N (ft)	Local E (ft)	Grid East (US ft)	Grid North (US ft)
Slot D	-12.32	8.57	1702125.290	14272515.700
			Latitude	Longitude
			39°18'12.6077"N	80°46'54.6890"W
Comment: Dixie Unit 2H				
H&P 519 (RKB) to Ground level (At Slot: Slot D)			30ft	
Mean Sea Level to Ground level (At Slot: Slot D)			-886ft	
H&P 519 (RKB) to Mean Sea Level			916ft	

BH AT Curve <8-1/2"> (5844')(5897'-15546') : 5826.60ft TVD, 540.93ft N, 269.39ft E  
 APS EM <8-3/4"> (3165')(3296'-5844') : 3266.42ft TVD, 362.55ft N, 102.66ft E  
 APS EM <12-3/8"> (523')(675'-3165') : 674.88ft TVD, 5.40ft S, 9.09ft E  
 Gyrodatta MS Gyro <17-1/2"> (100'-523') : 100.00ft TVD, 0.14ft S, 0.21ft E

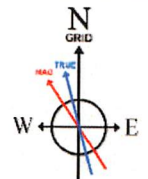
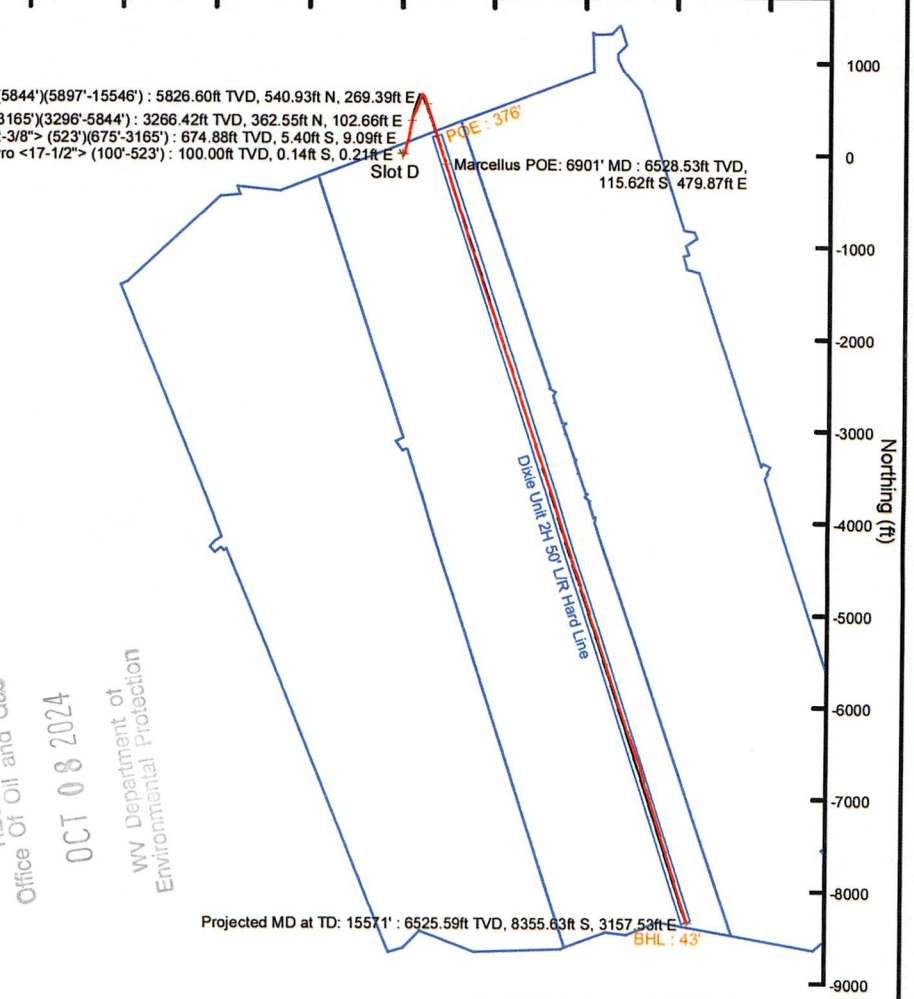
Well Data			
Slot	Well	Wellbore	Wellpath
Slot D	Dixie Unit 2H	Dixie Unit 2H AAWB	Dixie Unit 2H AWP Proj: 15571'
Slot D	Dixie Unit 2H	Dixie Unit 2H PWB	Dixie Unit 2H PWP Rev-C.0



Well Profile Data									
Design Comment	MD (ft)	Inc. (")	Az. (°)	TVD (ft)	Local N (ft)	Local E (ft)	DLS ("/100ft)	VS (ft)	
Tie On	3165.00	8.700	8.230	3137.13	341.70	99.24	0.12	-294.41	
Proj. to Bottom	3237.00	8.700	8.230	3208.31	352.47	100.80	0.00	-304.18	
Drill Out	3317.00	8.700	8.230	3287.39	364.45	102.53	0.00	-315.04	
End of 3D Arc	3390.86	8.193	17.692	3360.45	374.99	104.93	2.00	-324.33	
Curve KOP	5272.66	8.193	17.692	5223.04	630.49	186.43	0.00	-542.22	
End of 3D Arc	6309.19	45.000	162.000	6167.79	331.67	332.20	5.00	-213.00	
Hold	6584.19	45.000	162.000	6362.25	146.73	392.29	0.00	-18.54	
POE	6894.29	69.808	162.025	6528.00	-99.82	472.33	8.00	240.67	
Landing Pt.	7151.69	90.400	162.025	6572.00	-339.72	550.16	8.00	492.88	
BHL	15569.65	90.400	162.025	6513.23	-8346.82	3147.91	0.00	8910.84	



RECEIVED  
 Office Of Oil and Gas  
 OCT 08 2024  
 WV Department of  
 Environmental Protection



User specified (HDGM) Dip: 65.98° Field: 51530 nT  
 Magnetic North is 7.48 degrees West of True North (at 3/19/2024)  
 Grid North is 0.14 degrees East of True North  
 To correct azimuth from True to Grid subtract 0.14 degrees  
 To correct azimuth from Magnetic to Grid subtract 7.62 degrees



# Actual Wellpath Report

Dixie Unit 2H AWP Proj: 15571'  
Page 1 of 10



### REFERENCE WELLPATH IDENTIFICATION

Operator	ANTERO RESOURCES CORPORATION	Well	Dixie Unit 2H
Field	Doddridge	API	47-017-06959-0000
Facility	Genevieve Pad	Wellbore	Dixie Unit 2H AWB
Slot	Slot D		

### REPORT SETUP INFORMATION

Projection System	NAD27 / UTM Zone 17 North, US feet	Software System	WellArchitect® 6.0
North Reference	Grid	User	Edsaryar
Scale	0.999604	Report Generated	4/12/2024 at 4:36:46 PM
Convergence at slot	0.14° East	Database	WA_MPL_EASTERNUS_Defn

### WELLPATH LOCATION

	Local coordinates		Grid coordinates		Geographic coordinates	
	North[ft]	East[ft]	Easting[US ft]	Northing[US ft]	Latitude	Longitude
Slot Location	-12.32	8.57	1702125.29	14272515.70	39°18'12.6077"N	80°46'54.6890"W
Facility Reference Pt			1702116.72	14272528.02	39°18'12.7297"N	80°46'54.7976"W
Field Reference Pt			0.00	0.00	0°00'0.0000"	85°29'19.3013"W

### WELLPATH DATUM

Calculation method	Minimum curvature	H&P 519 (RKB) to Facility Vertical Datum	916.00ft
Horizontal Reference Pt	Slot	H&P 519 (RKB) to Mean Sea Level	916.00ft
Vertical Reference Pt	H&P 519 (RKB)	H&P 519 (RKB) to Ground Level at Slot (Slot D)	30.00ft
MD Reference Pt	H&P 519 (RKB)	Section Origin	N 0.00, E 0.00 ft
Field Vertical Reference	Mean Sea Level	Section Azimuth	162.03°

RECEIVED  
 Office Of Oil and Gas  
 OCT 08 2024  
 WV Department of Environmental Protection



# Actual Wellpath Report

Dixie Unit 2H AWP Proj: 15571'  
Page 2 of 10



## REFERENCE WELLPATH IDENTIFICATION

Operator	ANTERO RESOURCES CORPORATION	Well	Dixie Unit 2H
Field	Doddridge	API	47-017-06959-0000
Facility	Genevieve Pad	Wellbore	Dixie Unit 2H AWB
Slot	Slot D		

## WELLPATH DATA (170 stations) † = interpolated, ‡ = extrapolated station

MD (ft)	Inclination (°)	Azimuth (°)	TVD (ft)	Vert Sect (ft)	North (ft)	East (ft)	Grid East (US ft)	Grid North (US ft)	Latitude	Longitude	Closure Dist (ft)	Closure Dir (°)	DLS (°/100ft)	Build Rate (°/100ft)	Turn Rate (°/100ft)	Comments
0.00	0.000	123.530	0.00	0.00	0.00	0.00	1702125.29	14272515.70	39°18'12.6077"N	80°46'54.6890"W	0.00	0.000	0.00	0.00	0.00	
30.00	0.000	123.530	30.00	0.00	0.00	0.00	1702125.29	14272515.70	39°18'12.6077"N	80°46'54.6890"W	0.00	0.000	0.00	0.00	0.00	
100.00	0.410	123.530	100.00	0.20	-0.14	0.21	1702125.50	14272515.56	39°18'12.6063"N	80°46'54.6863"W	0.25	123.530	0.59	0.59	0.00	Gyrodatta MS Gyro <17-1/2"> (100'-523')
200.00	0.430	112.190	200.00	0.72	-0.48	0.85	1702126.14	14272515.22	39°18'12.6030"N	80°46'54.6781"W	0.98	119.207	0.09	0.02	-11.34	
300.00	0.840	128.430	299.99	1.57	-1.08	1.78	1702127.07	14272514.63	39°18'12.5970"N	80°46'54.6664"W	2.08	121.185	0.44	0.41	16.24	
400.00	1.110	130.890	399.98	3.01	-2.16	3.08	1702128.37	14272513.54	39°18'12.5862"N	80°46'54.6498"W	3.77	125.078	0.27	0.27	2.46	
500.00	1.330	133.380	499.95	4.86	-3.60	4.66	1702129.95	14272512.11	39°18'12.5721"N	80°46'54.6298"W	5.88	127.665	0.23	0.22	2.49	
523.00	1.390	134.540	522.95	5.34	-3.97	5.05	1702130.34	14272511.73	39°18'12.5683"N	80°46'54.6248"W	6.43	128.200	0.29	0.26	5.04	
675.00	2.060	92.800	674.88	7.94	-5.40	9.09	1702134.38	14272510.30	39°18'12.5541"N	80°46'54.5734"W	10.58	120.709	0.91	0.44	-27.46	APS EM <12-3/8"> (523')(675'-3165')
764.00	4.150	67.560	763.75	8.26	-4.25	13.67	1702138.95	14272511.45	39°18'12.5654"N	80°46'54.5152"W	14.31	107.272	2.75	2.35	-28.36	
854.00	5.390	47.170	853.44	6.23	-0.13	19.78	1702145.06	14272515.57	39°18'12.6059"N	80°46'54.4373"W	19.78	90.385	2.31	1.38	-22.66	
944.00	6.680	30.580	942.95	0.99	7.25	25.54	1702150.82	14272522.95	39°18'12.6787"N	80°46'54.3638"W	26.55	74.158	2.40	1.43	-18.43	
1033.00	7.560	14.160	1031.27	-7.40	17.38	29.61	1702154.89	14272533.08	39°18'12.7788"N	80°46'54.3118"W	34.33	59.584	2.48	0.99	-18.45	
1128.00	8.130	7.420	1125.38	-18.76	30.10	32.01	1702157.28	14272545.79	39°18'12.9045"N	80°46'54.2809"W	43.94	46.754	1.14	0.60	-7.09	
1222.00	8.190	9.310	1218.43	-30.72	43.30	33.95	1702159.22	14272558.98	39°18'13.0349"N	80°46'54.2558"W	55.02	38.095	0.29	0.06	2.01	
1317.00	8.220	9.160	1312.46	-42.77	56.68	36.12	1702161.40	14272572.36	39°18'13.1671"N	80°46'54.2277"W	67.22	32.508	0.04	0.03	-0.16	
1411.00	8.100	8.710	1405.51	-54.67	69.86	38.20	1702163.47	14272585.54	39°18'13.2973"N	80°46'54.2009"W	79.62	28.666	0.14	-0.13	-0.48	
1505.00	8.430	14.520	1498.53	-66.40	83.08	40.93	1702166.20	14272598.75	39°18'13.4279"N	80°46'54.1658"W	92.61	26.225	0.95	0.35	6.18	
1599.00	8.450	16.340	1591.52	-77.92	96.38	44.60	1702169.87	14272612.04	39°18'13.5592"N	80°46'54.1187"W	106.20	24.831	0.28	0.02	1.94	
1694.00	9.180	18.100	1685.39	-89.81	110.28	48.91	1702174.19	14272625.94	39°18'13.6965"N	80°46'54.0633"W	120.64	23.920	0.82	0.77	1.85	
1788.00	9.280	16.270	1778.18	-102.14	124.68	53.37	1702178.64	14272640.33	39°18'13.8388"N	80°46'54.0062"W	135.62	23.172	0.33	0.11	-1.95	
1882.00	9.340	17.380	1870.94	-114.62	139.24	57.77	1702183.04	14272654.88	39°18'13.9825"N	80°46'53.9498"W	150.75	22.534	0.20	0.06	1.18	
1977.00	9.570	15.780	1964.65	-127.48	154.19	62.22	1702187.49	14272669.83	39°18'14.1302"N	80°46'53.8927"W	166.27	21.975	0.37	0.24	-1.68	
2072.00	9.510	15.580	2058.33	-140.58	169.35	66.48	1702191.74	14272684.99	39°18'14.2800"N	80°46'53.8381"W	181.93	21.431	0.07	-0.06	-0.21	
2167.00	9.470	11.660	2152.03	-153.92	184.57	70.16	1702195.42	14272700.19	39°18'14.4302"N	80°46'53.7908"W	197.45	20.814	0.68	-0.04	-4.13	
2261.00	9.510	10.660	2244.75	-167.45	199.77	73.16	1702198.42	14272715.39	39°18'14.5804"N	80°46'53.7521"W	212.75	20.114	0.18	0.04	-1.06	
2355.00	9.360	7.560	2337.48	-181.17	214.98	75.60	1702200.86	14272730.59	39°18'14.7307"N	80°46'53.7206"W	227.89	19.376	0.56	-0.16	-3.30	
2450.00	9.550	10.390	2431.19	-195.07	230.39	78.04	1702203.30	14272746.00	39°18'14.8829"N	80°46'53.6891"W	243.25	18.713	0.53	0.20	2.98	
2544.00	9.410	10.790	2523.90	-208.67	245.61	80.89	1702206.14	14272761.21	39°18'15.0333"N	80°46'53.6525"W	258.58	18.228	0.16	-0.15	0.43	
2638.00	9.240	7.410	2616.66	-222.23	260.64	83.30	1702208.56	14272776.24	39°18'15.1818"N	80°46'53.6213"W	273.63	17.723	0.61	-0.18	-3.60	

RECEIVED  
 Office Of Oil and Gas  
 OCT 08 2024  
 WV Department of  
 Environmental Protection



# Actual Wellpath Report

Dixie Unit 2H AWP Proj: 15571'

Page 3 of 10



## REFERENCE WELLPATH IDENTIFICATION

Operator	ANTERO RESOURCES CORPORATION	Well	Dixie Unit 2H
Field	Doddridge	API	47-017-06959-0000
Facility	Genevieve Pad	Wellbore	Dixie Unit 2H AWB
Slot	Slot D		

## WELLPATH DATA (170 stations)

MD [ft]	Inclination [°]	Azimuth [°]	TVD [ft]	Vert Sect [ft]	North [ft]	East [ft]	Grid East [US ft]	Grid North [US ft]	Latitude	Longitude	Closure Dist [ft]	Closure Dir [°]	DLS [°/100ft]	Build Rate [°/100ft]	Turn Rate [°/100ft]	Comments
2733.00	9.220	12.120	2710.43	-235.70	275.65	85.88	1702211.14	14272791.24	39°18'15.3300"N	80°46'53.5880"W	288.71	17.305	0.80	-0.02	4.96	
2827.00	9.220	15.410	2803.22	-248.51	290.27	89.46	1702214.72	14272805.85	39°18'15.4745"N	80°46'53.5420"W	303.74	17.130	0.56	0.00	3.50	
2922.00	9.070	11.430	2897.01	-261.39	304.94	92.97	1702218.22	14272820.52	39°18'15.6195"N	80°46'53.4969"W	318.80	16.955	0.68	-0.16	-4.19	
3110.00	8.670	8.610	3082.77	-286.97	333.48	98.03	1702223.28	14272849.05	39°18'15.9014"N	80°46'53.4317"W	347.59	16.381	0.31	-0.21	-1.50	
3165.00	8.700	8.230	3137.13	-294.41	341.70	99.24	1702224.49	14272857.26	39°18'15.9825"N	80°46'53.4160"W	355.82	16.196	0.12	0.05	-0.69	
3296.00	9.870	10.250	3266.42	-313.19	362.55	102.66	1702227.91	14272878.11	39°18'16.1886"N	80°46'53.3719"W	376.80	15.810	0.93	0.89	1.54	APS EM <8-3/4"> (3165')(3296'-5844')
3390.00	11.000	14.850	3358.86	-327.83	379.15	106.39	1702231.64	14272894.70	39°18'16.3525"N	80°46'53.3239"W	393.79	15.674	1.49	1.20	4.89	
3485.00	11.290	25.220	3452.08	-342.23	396.32	112.68	1702237.92	14272911.86	39°18'16.5221"N	80°46'53.2434"W	412.03	15.871	2.13	0.31	10.92	
3579.00	11.760	32.740	3544.19	-355.00	412.71	121.78	1702247.02	14272928.24	39°18'16.6838"N	80°46'53.1271"W	430.30	16.440	1.67	0.50	8.00	
3673.00	11.690	29.650	3636.23	-367.49	429.04	131.67	1702256.91	14272944.57	39°18'16.8450"N	80°46'53.0008"W	448.79	17.061	0.67	-0.07	-3.29	
3768.00	11.120	26.630	3729.35	-380.50	445.59	140.54	1702265.77	14272961.12	39°18'17.0084"N	80°46'52.8875"W	467.23	17.505	0.87	-0.60	-3.18	
3862.00	10.520	24.490	3821.68	-393.28	461.50	148.16	1702273.39	14272977.02	39°18'17.1655"N	80°46'52.7900"W	484.70	17.798	0.77	-0.64	-2.28	
3956.00	9.900	21.010	3914.19	-405.89	476.86	154.61	1702279.84	14272992.37	39°18'17.3171"N	80°46'52.7075"W	501.30	17.964	0.93	-0.66	-3.70	
4050.00	9.000	17.560	4006.92	-418.16	491.41	159.73	1702284.96	14273006.92	39°18'17.4608"N	80°46'52.6419"W	516.72	18.006	1.13	-0.96	-3.67	
4145.00	8.540	15.570	4100.81	-430.09	505.29	163.86	1702289.09	14273020.79	39°18'17.5979"N	80°46'52.5889"W	531.20	17.968	0.58	-0.48	-2.09	
4239.00	8.000	23.710	4193.83	-440.79	518.00	168.37	1702293.59	14273033.50	39°18'17.7235"N	80°46'52.5312"W	544.68	18.006	1.37	-0.57	8.66	
4333.00	6.950	27.090	4287.03	-449.69	529.06	173.59	1702298.81	14273044.55	39°18'17.8326"N	80°46'52.4645"W	556.81	18.165	1.21	-1.12	3.60	
4428.00	6.160	25.810	4381.41	-457.43	538.76	178.42	1702303.64	14273054.25	39°18'17.9284"N	80°46'52.4026"W	567.54	18.324	0.85	-0.83	-1.35	
4522.00	7.460	17.330	4474.75	-466.06	549.13	182.44	1702307.66	14273064.61	39°18'18.0308"N	80°46'52.3513"W	578.64	18.378	1.74	1.38	-9.02	
4616.00	7.570	12.260	4567.94	-476.39	561.00	185.57	1702310.79	14273076.48	39°18'18.1481"N	80°46'52.3111"W	590.90	18.303	0.71	0.12	-5.39	
4711.00	6.520	24.910	4662.23	-485.74	572.01	189.17	1702314.39	14273087.48	39°18'18.2568"N	80°46'52.2649"W	602.48	18.300	1.97	-1.11	13.32	
4805.00	5.880	26.400	4755.68	-493.10	581.17	193.56	1702318.77	14273096.63	39°18'18.3471"N	80°46'52.2088"W	612.55	18.421	0.70	-0.68	1.59	
4900.00	6.790	20.180	4850.10	-500.99	590.80	197.66	1702322.87	14273106.26	39°18'18.4422"N	80°46'52.1563"W	622.98	18.499	1.20	0.96	-6.55	
4994.00	9.000	15.540	4943.20	-511.49	603.10	201.55	1702326.76	14273118.56	39°18'18.5637"N	80°46'52.1065"W	635.88	18.479	2.44	2.35	-4.94	
5089.00	8.640	12.080	5037.08	-523.87	617.23	205.03	1702330.24	14273132.69	39°18'18.7033"N	80°46'52.0617"W	650.40	18.376	0.67	-0.38	-3.64	
5183.00	7.780	8.770	5130.12	-535.66	630.43	207.48	1702332.69	14273145.88	39°18'18.8337"N	80°46'52.0302"W	663.69	18.217	1.04	-0.91	-3.52	
5277.00	5.760	19.830	5223.46	-545.07	641.15	210.05	1702335.26	14273156.60	39°18'18.9396"N	80°46'51.9972"W	674.68	18.140	2.55	-2.15	11.77	
5372.00	4.740	86.600	5318.14	-547.85	645.87	215.59	1702340.80	14273161.32	39°18'18.9862"N	80°46'51.9265"W	680.91	18.459	6.14	-1.07	70.28	
5466.00	7.920	130.460	5411.60	-541.35	641.90	224.40	1702349.60	14273157.34	39°18'18.9467"N	80°46'51.8146"W	679.99	19.269	5.92	3.38	46.66	
5560.00	11.240	144.820	5504.29	-527.08	630.20	234.61	1702359.81	14273145.65	39°18'18.8308"N	80°46'51.6850"W	672.46	20.419	4.33	3.53	15.28	

RECEIVED  
Office Of Oil and Gas  
OCT 08 2024  
WV Department of  
Environmental Protection



# Actual Wellpath Report

Dixie Unit 2H AWP Proj: 15571'  
Page 4 of 10



REFERENCE WELLPATH IDENTIFICATION			
Operator	ANTERO RESOURCES CORPORATION	Well	Dixie Unit 2H
Field	Doddridge	API	47-017-06959-0000
Facility	Genevieve Pad	Wellbore	Dixie Unit 2H AWB
Slot	Slot D		

WELLPATH DATA (170 stations) † = interpolated, ‡ = extrapolated station																	
MD [ft]	Inclination [°]	Azimuth [°]	TVD [ft]	Vert Sect [ft]	North [ft]	East [ft]	Grid East [US ft]	Grid North [US ft]	Latitude	Longitude	Closure Dist [ft]	Closure Dir [°]	DLS [°/100ft]	Build Rate [°/100ft]	Turn Rate [°/100ft]	Comments	
5655.00	13.620	159.670	5597.08	-507.05	612.14	243.84	1702369.03	14273127.60	39°18'18.6521"N	80°46'51.5683"W	658.92	21.719	4.18	2.51	15.63		
5749.00	16.740	159.800	5687.79	-482.46	589.05	252.36	1702377.55	14273104.52	39°18'18.4237"N	80°46'51.4606"W	640.83	23.191	3.32	3.32	0.14		
5844.00	20.930	160.340	5777.69	-451.81	560.22	262.80	1702387.98	14273075.70	39°18'18.1385"N	80°46'51.3287"W	618.80	25.131	4.41	4.41	0.57		
5897.00	24.310	161.820	5826.60	-431.44	540.93	269.39	1702394.57	14273056.42	39°18'17.9477"N	80°46'51.2454"W	604.30	26.473	6.47	6.38	2.79	BH AT Curve <8-1/2"> (5844')(5897'-15546')	
5975.00	27.380	161.650	5896.79	-397.44	508.65	280.05	1702405.22	14273024.15	39°18'17.6283"N	80°46'51.1108"W	580.65	28.836	3.94	3.94	-0.22		
6069.00	32.230	162.460	5978.33	-350.73	464.21	294.41	1702419.59	14272979.72	39°18'17.1887"N	80°46'50.9294"W	549.70	32.384	5.18	5.16	0.86		
6163.00	36.780	162.220	6055.78	-297.50	413.48	310.57	1702435.74	14272929.02	39°18'16.6870"N	80°46'50.7255"W	517.13	36.910	4.84	4.84	-0.26		
6258.00	41.880	160.630	6129.24	-237.31	356.45	329.78	1702454.94	14272872.00	39°18'16.1228"N	80°46'50.4828"W	485.60	42.775	5.47	5.37	-1.67		
6352.00	44.760	161.900	6197.62	-172.84	295.38	350.48	1702475.63	14272810.96	39°18'15.5187"N	80°46'50.2214"W	458.35	49.876	3.20	3.06	1.35	Sycamore: 6352' MD	
6446.00	45.100	162.290	6264.17	-106.45	232.20	370.89	1702496.03	14272747.81	39°18'14.8939"N	80°46'49.9638"W	437.58	57.950	0.47	0.36	0.41		
6531.00†	45.299	162.516	6324.06	-46.14	174.71	389.12	1702514.25	14272690.34	39°18'14.3252"N	80°46'49.7336"W	426.54	65.820	0.30	0.23	0.27	Middlesex: 6531' MD	
6540.00	45.320	162.540	6330.39	-39.74	168.61	391.04	1702516.17	14272684.24	39°18'14.2648"N	80°46'49.7093"W	425.84	66.675	0.30	0.23	0.27		
6635.00	48.800	163.310	6395.10	29.78	102.14	411.44	1702536.57	14272617.80	39°18'13.6074"N	80°46'49.4518"W	423.93	76.059	3.71	3.66	0.81		
6729.00	56.420	162.470	6452.14	104.41	30.82	433.43	1702558.55	14272546.51	39°18'12.9019"N	80°46'49.1744"W	434.52	85.933	8.14	8.11	-0.89		
6731.00†	56.588	162.468	6453.24	106.07	29.23	433.93	1702559.05	14272544.92	39°18'12.8862"N	80°46'49.1681"W	434.91	86.147	8.41	8.41	-0.09	Burkett: 6731' MD	
6790.00†	61.550	162.417	6483.56	156.67	-19.01	449.19	1702574.30	14272496.70	39°18'12.4091"N	80°46'48.9754"W	449.59	92.423	8.41	8.41	-0.09	Tully: 6790' MD	
6824.00	64.410	162.390	6499.00	186.95	-47.88	458.35	1702583.46	14272467.84	39°18'12.1235"N	80°46'48.8598"W	460.84	95.963	8.41	8.41	-0.08		
6901.00†	70.480	162.365	6528.53	258.03	-115.62	479.87	1702604.97	14272400.13	39°18'11.4535"N	80°46'48.5882"W	493.60	103.547	7.88	7.88	-0.03	Marcellus POE: 6901' MD	
6918.00	71.820	162.360	6534.02	274.11	-130.95	484.74	1702609.84	14272384.80	39°18'11.3018"N	80°46'48.5266"W	502.12	105.117	7.88	7.88	-0.03		
7013.00	79.510	163.080	6557.52	366.08	-218.77	512.05	1702637.14	14272297.01	39°18'10.4332"N	80°46'48.1819"W	556.83	113.135	8.13	8.09	0.76		
7107.00	86.400	163.390	6569.04	459.29	-308.05	538.94	1702664.02	14272207.78	39°18'9.5502"N	80°46'47.8426"W	620.77	119.751	7.34	7.33	0.33		
7202.00	90.250	162.060	6571.82	554.23	-398.70	567.14	1702692.20	14272117.16	39°18'8.6535"N	80°46'47.4868"W	693.26	125.108	4.29	4.05	-1.40		
7296.00	90.520	162.770	6571.19	648.22	-488.31	595.54	1702720.59	14272027.59	39°18'7.7672"N	80°46'47.1283"W	770.13	129.350	0.81	0.29	0.76		
7390.00	91.020	163.150	6569.93	742.20	-578.17	623.08	1702748.12	14271937.76	39°18'6.8783"N	80°46'46.7807"W	850.01	132.859	0.67	0.53	0.40		
7485.00	91.020	162.930	6568.23	837.17	-669.03	650.79	1702775.82	14271846.94	39°18'5.9797"N	80°46'46.4311"W	933.34	135.792	0.23	0.00	-0.23		
7579.00	91.050	162.720	6566.54	931.14	-758.82	678.54	1702803.56	14271757.18	39°18'5.0915"N	80°46'46.0808"W	1017.95	138.197	0.23	0.03	-0.22		
7673.00	91.140	162.700	6564.74	1025.12	-848.56	706.47	1702831.48	14271667.48	39°18'4.2039"N	80°46'45.7283"W	1104.15	140.221	0.10	0.10	-0.02		
7767.00	91.790	162.480	6562.34	1119.09	-938.22	734.59	1702859.59	14271577.85	39°18'3.3170"N	80°46'45.3734"W	1191.58	141.941	0.73	0.69	-0.23		
7861.00	90.550	161.510	6560.42	1213.06	-1027.59	763.64	1702888.62	14271488.51	39°18'2.4330"N	80°46'45.0067"W	1280.27	143.383	1.67	-1.32	-1.03		
7955.00	91.540	162.830	6558.70	1307.04	-1117.06	792.41	1702917.39	14271399.08	39°18'1.5480"N	80°46'44.6434"W	1369.58	144.649	1.76	1.05	1.40		

RECEIVED  
Office Of Oil and Gas  
OCT 08 2024  
WV Department of  
Environmental Protection



# Actual Wellpath Report

Dixie Unit 2H AWP Proj: 15571'  
Page 5 of 10



## REFERENCE WELLPATH IDENTIFICATION

Operator	ANTERO RESOURCES CORPORATION	Well	Dixie Unit 2H
Field	Doddridge	API	47-017-06959-0000
Facility	Genevieve Pad	Wellbore	Dixie Unit 2H AWB
Slot	Slot D		

## WELLPATH DATA (170 stations)

MD [ft]	Inclination [°]	Azimuth [°]	TVD [ft]	Vert Sect [ft]	North [ft]	East [ft]	Grid East [US ft]	Grid North [US ft]	Latitude	Longitude	Closure Dist [ft]	Closure Dir [°]	DLS ["/100ft]	Build Rate ["/100ft]	Turn Rate ["/100ft]	Comments
8050.00	90.740	162.090	6556.81	1402.02	-1207.63	821.04	1702946.00	14271308.55	39°18'0.6522"N	80°46'44.2821"W	1460.29	145.789	1.15	-0.84	-0.78	
8144.00	90.400	161.480	6555.88	1496.01	-1296.91	850.42	1702975.37	14271219.31	39°17'59.7691"N	80°46'43.9112"W	1550.87	146.746	0.74	-0.36	-0.65	
8238.00	91.450	163.110	6554.36	1590.00	-1386.44	879.00	1703003.94	14271129.81	39°17'58.8835"N	80°46'43.5504"W	1641.60	147.625	2.06	1.12	1.73	
8332.00	90.950	160.780	6552.39	1683.97	-1475.79	908.12	1703033.05	14271040.50	39°17'57.9997"N	80°46'43.1827"W	1732.81	148.394	2.53	-0.53	-2.48	
8427.00	91.080	162.200	6550.71	1778.95	-1565.86	938.28	1703063.20	14270950.47	39°17'57.1088"N	80°46'42.8019"W	1825.45	149.069	1.50	0.14	1.49	
8521.00	90.770	159.790	6549.19	1872.91	-1654.71	968.88	1703093.79	14270861.64	39°17'56.2298"N	80°46'42.4154"W	1917.50	149.650	2.58	-0.33	-2.56	
8709.00	90.680	162.170	6546.81	2060.85	-1832.42	1030.14	1703155.02	14270684.01	39°17'54.4719"N	80°46'41.6417"W	2102.13	150.656	1.27	-0.05	1.27	
8803.00	90.740	162.210	6545.65	2154.85	-1921.91	1058.89	1703183.76	14270594.55	39°17'53.5867"N	80°46'41.2788"W	2194.31	151.147	0.08	0.06	0.04	
8897.00	90.740	161.800	6544.43	2248.84	-2011.31	1087.93	1703212.79	14270505.19	39°17'52.7025"N	80°46'40.9122"W	2286.69	151.591	0.44	0.00	-0.44	
8991.00	90.490	162.420	6543.42	2342.83	-2100.75	1116.80	1703241.65	14270415.78	39°17'51.8177"N	80°46'40.5477"W	2379.16	152.004	0.71	-0.27	0.66	
9085.00	89.630	161.500	6543.33	2436.83	-2190.13	1145.91	1703270.75	14270326.44	39°17'50.9336"N	80°46'40.1803"W	2471.80	152.381	1.34	-0.91	-0.98	
9179.00	90.980	162.140	6542.82	2530.82	-2279.44	1175.24	1703300.06	14270237.17	39°17'50.0502"N	80°46'39.8100"W	2564.57	152.725	1.59	1.44	0.68	
9273.00	89.660	161.080	6542.30	2624.82	-2368.63	1204.89	1703329.71	14270148.01	39°17'49.1679"N	80°46'39.4356"W	2657.48	153.038	1.80	-1.40	-1.13	
9367.00	90.580	162.040	6542.10	2718.81	-2457.80	1234.63	1703359.43	14270058.88	39°17'48.2859"N	80°46'39.0602"W	2750.47	153.328	1.41	0.98	1.02	
9462.00	90.370	162.170	6541.32	2813.81	-2548.20	1263.82	1703388.60	14269968.51	39°17'47.3917"N	80°46'38.6918"W	2844.39	153.620	0.26	-0.22	0.14	
9556.00	90.460	161.570	6540.63	2907.80	-2637.53	1293.07	1703417.84	14269879.22	39°17'46.5080"N	80°46'38.3225"W	2937.45	153.883	0.65	0.10	-0.64	
9651.00	90.620	161.830	6539.74	3002.80	-2727.72	1322.89	1703447.66	14269789.06	39°17'45.6159"N	80°46'37.9459"W	3031.59	154.128	0.32	0.17	0.27	
9745.00	89.910	160.010	6539.30	3096.78	-2816.56	1353.62	1703478.37	14269700.26	39°17'44.7372"N	80°46'37.5579"W	3124.94	154.331	2.08	-0.76	-1.94	
9839.00	90.710	162.220	6538.80	3190.76	-2905.49	1384.04	1703508.78	14269611.37	39°17'43.8575"N	80°46'37.1737"W	3218.30	154.529	2.50	0.85	2.35	
9934.00	89.510	161.620	6538.61	3285.75	-2995.79	1413.52	1703538.25	14269521.10	39°17'42.9642"N	80°46'36.8016"W	3312.53	154.740	1.41	-1.26	-0.63	
10029.00	90.430	161.450	6538.66	3380.75	-3085.90	1443.61	1703568.33	14269431.02	39°17'42.0728"N	80°46'36.4217"W	3406.88	154.929	0.98	0.97	-0.18	
10124.00	90.030	161.010	6538.28	3475.74	-3175.85	1474.18	1703598.88	14269341.11	39°17'41.1831"N	80°46'36.0357"W	3501.32	155.100	0.63	-0.42	-0.46	
10219.00	89.940	161.580	6538.31	3570.73	-3265.83	1504.65	1703629.34	14269251.17	39°17'40.2930"N	80°46'35.6510"W	3595.78	155.263	0.61	-0.09	0.60	
10313.00	90.250	161.980	6538.15	3664.73	-3355.12	1534.04	1703658.72	14269161.92	39°17'39.4098"N	80°46'35.2800"W	3689.18	155.429	0.54	0.33	0.43	
10407.00	89.850	161.890	6538.07	3758.73	-3444.48	1563.19	1703687.85	14269072.59	39°17'38.5258"N	80°46'34.9120"W	3782.59	155.590	0.44	-0.43	-0.10	
10502.00	89.510	161.980	6538.60	3853.73	-3534.80	1592.64	1703717.30	14268982.31	39°17'37.6324"N	80°46'34.5402"W	3877.03	155.746	0.37	-0.36	0.09	
10596.00	89.750	161.400	6539.21	3947.72	-3624.04	1622.17	1703746.82	14268893.10	39°17'36.7497"N	80°46'34.1674"W	3970.53	155.886	0.67	0.26	-0.62	
10784.00	89.910	161.920	6539.76	4135.72	-3802.49	1681.33	1703805.95	14268714.72	39°17'34.9845"N	80°46'33.4206"W	4157.62	156.147	0.29	0.09	0.28	
10878.00	89.940	161.380	6539.89	4229.71	-3891.71	1710.92	1703835.53	14268625.54	39°17'34.1020"N	80°46'33.0470"W	4251.19	156.268	0.58	0.03	-0.57	
10973.00	90.370	161.640	6539.63	4324.71	-3981.80	1741.05	1703865.65	14268535.48	39°17'33.2108"N	80°46'32.6667"W	4345.80	156.383	0.53	0.45	0.27	

RECEIVED  
 Office Of Oil and Gas  
 OCT 08 2024  
 WV Department of  
 Environmental Protection



# Actual Wellpath Report

Dixie Unit 2H AWP Proj: 15571'  
Page 6 of 10



## REFERENCE WELLPATH IDENTIFICATION

Operator	ANTERO RESOURCES CORPORATION	Well	Dixie Unit 2H
Field	Doddridge	API	47-017-06959-0000
Facility	Genevieve Pad	Wellbore	Dixie Unit 2H AWB
Slot	Slot D		

## WELLPATH DATA (170 stations)

MD [ft]	Inclination [°]	Azimuth [°]	TVD [ft]	Vert Sect [ft]	North [ft]	East [ft]	Grid East [US ft]	Grid North [US ft]	Latitude	Longitude	Closure Dist [ft]	Closure Dir [°]	DLS ["/100ft]	Build Rate ["/100ft]	Turn Rate ["/100ft]	Comments
11067.00	89.850	162.540	6539.45	4418.71	-4071.25	1769.96	1703894.54	14268446.07	39°17'32.3260"N	80°46'32.3018"W	4439.35	156.503	1.11	-0.55	0.96	
11162.00	89.660	161.750	6539.86	4513.71	-4161.67	1799.08	1703923.66	14268355.69	39°17'31.4316"N	80°46'31.9342"W	4533.89	156.621	0.86	-0.20	-0.83	
11256.00	90.490	162.160	6539.73	4607.71	-4251.04	1828.20	1703952.76	14268266.35	39°17'30.5475"N	80°46'31.5667"W	4627.49	156.729	0.98	0.88	0.44	
11350.00	90.120	162.300	6539.23	4701.70	-4340.56	1856.89	1703981.44	14268176.87	39°17'29.6621"N	80°46'31.2047"W	4721.07	156.839	0.42	-0.39	0.15	
11445.00	89.660	161.410	6539.42	4796.70	-4430.83	1886.47	1704011.01	14268086.63	39°17'28.7691"N	80°46'30.8312"W	4815.71	156.938	1.05	-0.48	-0.94	
11539.00	90.490	161.620	6539.29	4890.70	-4519.98	1916.28	1704040.81	14267997.52	39°17'27.8873"N	80°46'30.4550"W	4909.41	157.025	0.91	0.88	0.22	
11633.00	89.690	162.410	6539.14	4984.70	-4609.39	1945.30	1704069.82	14267908.15	39°17'27.0029"N	80°46'30.0887"W	5003.06	157.119	1.20	-0.85	0.84	
11727.00	89.350	161.370	6539.93	5078.69	-4698.73	1974.52	1704099.02	14267818.84	39°17'26.1192"N	80°46'29.7199"W	5096.74	157.207	1.16	-0.36	-1.11	
11822.00	90.310	161.810	6540.21	5173.69	-4788.86	2004.52	1704129.01	14267728.74	39°17'25.2276"N	80°46'29.3412"W	5191.46	157.287	1.11	1.01	0.46	
11916.00	90.120	162.120	6539.86	5267.68	-4878.24	2033.62	1704158.10	14267639.40	39°17'24.3435"N	80°46'28.9739"W	5285.16	157.370	0.39	-0.20	0.33	
12010.00	89.820	161.800	6539.91	5361.68	-4967.62	2062.73	1704187.20	14267550.05	39°17'23.4593"N	80°46'28.6065"W	5378.86	157.450	0.47	-0.32	-0.34	
12104.00	90.180	162.290	6539.91	5455.68	-5057.04	2091.71	1704216.17	14267460.67	39°17'22.5748"N	80°46'28.2407"W	5472.56	157.529	0.65	0.38	0.52	
12198.00	89.630	162.010	6540.07	5549.68	-5146.52	2120.52	1704244.97	14267371.23	39°17'21.6898"N	80°46'27.8771"W	5566.26	157.607	0.66	-0.59	-0.30	
12293.00	90.090	161.400	6540.30	5644.68	-5236.71	2150.34	1704274.78	14267281.07	39°17'20.7976"N	80°46'27.5007"W	5661.02	157.676	0.80	0.48	-0.64	
12387.00	90.000	161.820	6540.22	5738.68	-5325.91	2180.00	1704304.42	14267191.90	39°17'19.9152"N	80°46'27.1264"W	5754.80	157.740	0.46	-0.10	0.45	
12482.00	90.220	161.910	6540.04	5833.68	-5416.19	2209.57	1704333.98	14267101.66	39°17'19.0222"N	80°46'26.7532"W	5849.56	157.807	0.25	0.23	0.09	
12576.00	89.750	162.070	6540.07	5927.68	-5505.59	2238.63	1704363.03	14267012.30	39°17'18.1379"N	80°46'26.3864"W	5943.31	157.873	0.53	-0.50	0.17	
12671.00	90.280	161.790	6540.04	6022.68	-5595.90	2268.10	1704392.49	14266922.02	39°17'17.2445"N	80°46'26.0145"W	6038.08	157.937	0.63	0.56	-0.29	
12765.00	90.310	161.530	6539.56	6116.67	-5685.13	2297.68	1704422.05	14266832.83	39°17'16.3620"N	80°46'25.6411"W	6131.88	157.994	0.28	0.03	-0.28	
12859.00	90.000	161.470	6539.30	6210.67	-5774.27	2327.50	1704451.87	14266743.73	39°17'15.4802"N	80°46'25.2646"W	6225.71	158.047	0.34	-0.33	-0.06	
12953.00	90.430	162.050	6538.95	6304.67	-5863.54	2356.92	1704481.28	14266654.49	39°17'14.5971"N	80°46'24.8933"W	6319.51	158.102	0.77	0.46	0.62	
13048.00	90.060	160.340	6538.54	6399.65	-5953.47	2387.55	1704511.89	14266564.60	39°17'13.7075"N	80°46'24.5067"W	6414.37	158.148	1.84	-0.39	-1.80	
13142.00	90.430	161.410	6538.14	6493.63	-6042.28	2418.34	1704542.67	14266475.82	39°17'12.8290"N	80°46'24.1179"W	6508.26	158.187	1.20	0.39	1.14	
13237.00	90.090	161.520	6537.71	6588.62	-6132.35	2448.54	1704572.86	14266385.79	39°17'11.9380"N	80°46'23.7367"W	6603.11	158.234	0.38	-0.36	0.12	
13331.00	90.000	161.250	6537.64	6682.62	-6221.43	2478.55	1704602.85	14266296.74	39°17'11.0568"N	80°46'23.3579"W	6696.97	158.278	0.30	-0.10	-0.29	
13425.00	90.490	162.000	6537.24	6776.61	-6310.64	2508.18	1704632.47	14266207.57	39°17'10.1744"N	80°46'22.9839"W	6790.81	158.325	0.95	0.52	0.80	
13519.00	90.220	160.640	6536.65	6870.60	-6399.68	2538.28	1704662.56	14266118.56	39°17'9.2936"N	80°46'22.6039"W	6884.68	158.365	1.48	-0.29	-1.45	
13613.00	90.120	158.180	6536.37	6964.50	-6487.67	2571.34	1704695.61	14266030.61	39°17'8.4231"N	80°46'22.1863"W	6978.66	158.379	2.62	-0.11	-2.62	
13708.00	90.000	161.310	6536.27	7059.41	-6576.78	2604.22	1704728.48	14265941.53	39°17'7.5415"N	80°46'21.7709"W	7073.62	158.398	3.30	-0.13	3.29	
13803.00	90.370	163.490	6535.97	7154.40	-6667.33	2632.95	1704757.19	14265851.02	39°17'6.6458"N	80°46'21.4085"W	7168.38	158.451	2.33	0.39	2.29	

RECEIVED  
 Office Of Oil and Gas  
 OCT 08 2024  
 WV Department of  
 Environmental Protection



# Actual Wellpath Report

Dixie Unit 2H AWP Proj: 15571'

Page 7 of 10



## REFERENCE WELLPATH IDENTIFICATION

Operator	ANTERO RESOURCES CORPORATION	Well	Dixie Unit 2H
Field	Doddridge	API	47-017-06959-0000
Facility	Genevieve Pad	Wellbore	Dixie Unit 2H AWB
Slot	Slot D		

## WELLPATH DATA (170 stations) † = interpolated, ‡ = extrapolated station

MD [ft]	Inclination [°]	Azimuth [°]	TVD [ft]	Vert Sect [ft]	North [ft]	East [ft]	Grid East [US ft]	Grid North [US ft]	Latitude	Longitude	Closure Dist [ft]	Closure Dir [°]	DLS [°/100ft]	Build Rate [°/100ft]	Turn Rate [°/100ft]	Comments
13897.00	90.000	163.100	6535.66	7248.38	-6757.36	2659.97	1704784.20	14265761.02	39°17'5.7553"N	80°46'21.0678"W	7262.05	158.513	0.57	-0.39	-0.41	
13992.00	90.680	162.850	6535.10	7343.36	-6848.20	2687.78	1704812.00	14265670.22	39°17'4.8568"N	80°46'20.7170"W	7356.76	158.571	0.76	0.72	-0.26	
14086.00	89.720	161.490	6534.77	7437.36	-6937.68	2716.56	1704840.77	14265580.78	39°17'3.9717"N	80°46'20.3538"W	7450.58	158.616	1.77	-1.02	-1.45	
14181.00	90.180	162.660	6534.86	7532.36	-7028.07	2745.80	1704870.00	14265490.43	39°17'3.0776"N	80°46'19.9849"W	7545.40	158.660	1.32	0.48	1.23	
14275.00	89.880	162.070	6534.81	7626.35	-7117.65	2774.28	1704898.46	14265400.88	39°17'2.1915"N	80°46'19.6256"W	7639.21	158.705	0.70	-0.32	-0.63	
14369.00	90.980	163.090	6534.10	7720.34	-7207.33	2802.42	1704926.59	14265311.23	39°17'1.3044"N	80°46'19.2706"W	7732.99	158.753	1.60	1.17	1.09	
14464.00	90.310	163.030	6533.03	7815.32	-7298.20	2830.09	1704954.26	14265220.40	39°17'0.4056"N	80°46'18.9215"W	7827.72	158.805	0.71	-0.71	-0.06	
14558.00	90.000	162.800	6532.78	7909.31	-7388.06	2857.71	1704981.86	14265130.58	39°16'59.5168"N	80°46'18.5732"W	7921.48	158.853	0.41	-0.33	-0.24	
14653.00	90.280	162.580	6532.54	8004.30	-7478.75	2885.98	1705010.12	14265039.92	39°16'58.6197"N	80°46'18.2166"W	8016.27	158.899	0.37	0.29	-0.23	
14747.00	90.370	162.440	6532.01	8098.30	-7568.41	2914.23	1705038.36	14264950.30	39°16'57.7329"N	80°46'17.8602"W	8110.08	158.941	0.18	0.10	-0.15	
14841.00	90.650	163.790	6531.18	8192.28	-7658.35	2941.53	1705065.65	14264860.40	39°16'56.8433"N	80°46'17.5159"W	8203.83	158.989	1.47	0.30	1.44	
14936.00	90.520	162.170	6530.21	8287.25	-7749.18	2969.33	1705093.44	14264769.60	39°16'55.9448"N	80°46'17.1652"W	8298.60	159.034	1.71	-0.14	-1.71	
15031.00	90.490	163.230	6529.37	8382.24	-7839.88	2997.58	1705121.68	14264678.94	39°16'55.0477"N	80°46'16.8089"W	8393.40	159.076	1.12	-0.03	1.12	
15125.00	90.430	162.770	6528.61	8476.23	-7929.77	3025.06	1705149.15	14264589.09	39°16'54.1586"N	80°46'16.4623"W	8487.18	159.119	0.49	-0.06	-0.49	
15220.00	90.490	162.600	6527.85	8571.22	-8020.46	3053.34	1705177.41	14264498.43	39°16'53.2615"N	80°46'16.1057"W	8581.99	159.158	0.19	0.06	-0.18	
15314.00	90.280	162.500	6527.22	8665.21	-8110.13	3081.52	1705205.59	14264408.80	39°16'52.3745"N	80°46'15.7501"W	8675.83	159.195	0.25	-0.22	-0.11	
15409.00	90.460	162.580	6526.61	8760.21	-8200.75	3110.03	1705234.08	14264318.21	39°16'51.4781"N	80°46'15.3905"W	8770.67	159.231	0.21	0.19	0.08	
15503.00	90.280	163.290	6526.00	8854.19	-8290.61	3137.61	1705261.65	14264228.39	39°16'50.5893"N	80°46'15.0426"W	8864.47	159.271	0.78	-0.19	0.76	
15546.00	90.370	162.820	6525.75	8897.18	-8331.74	3150.14	1705274.18	14264187.27	39°16'50.1824"N	80°46'14.8846"W	8907.37	159.289	1.11	0.21	-1.09	
15571.00‡	90.370	162.820	6525.59	8922.18	-8355.63	3157.53	1705281.56	14264163.40	39°16'49.9462"N	80°46'14.7915"W	8932.33	159.299	0.00	0.00	0.00	Projected MD at TD: 15571'

RECEIVED  
Office Of Oil and Gas  
OCT 08 2024  
WV Department of  
Environmental Protection





# Actual Wellpath Report

Dixie Unit 2H AWP Proj: 15571'  
Page 8 of 10



REFERENCE WELLPATH IDENTIFICATION			
Operator	ANTERO RESOURCES CORPORATION	Well	Dixie Unit 2H
Field	Doddridge	API	47-017-06959-0000
Facility	Genevieve Pad	Wellbore	Dixie Unit 2H AWB
Slot	Slot D		

HOLE & CASING SECTIONS - Ref Wellbore: Dixie Unit 2H AWB    Ref Wellpath: Dixie Unit 2H AWP Proj: 15571'										
String/Diameter	Start MD [ft]	End MD [ft]	Interval [ft]	Start TVD [ft]	End TVD [ft]	Start N/S [ft]	Start E/W [ft]	End N/S [ft]	End E/W [ft]	
20in Conductor	30.00	130.00	100.00	30.00	130.00	0.00	0.00	-0.25	0.39	
17.5in Open Hole	130.00	624.00	494.00	130.00	623.91	-0.25	0.39	-5.18	7.42	
13.375in Casing Surface	30.00	604.00	574.00	30.00	603.92	0.00	0.00	-5.02	6.85	
12.375in Open Hole	624.00	3237.00	2613.00	623.91	3208.24	-5.18	7.42	352.85	100.98	
9.625in Casing Intermediate	30.00	3207.00	3177.00	30.00	3178.63	0.00	0.00	348.11	100.21	
8.75in Open Hole	3237.00	5922.00	2685.00	3208.24	5849.30	352.85	100.98	530.97	272.66	
8.5in Open Hole	5922.00	15571.00	9649.00	5849.30	6525.59	530.97	272.66	-8355.63	3157.53	
5.5in Casing Production	30.00	15551.00	15521.00	30.00	6525.72	0.00	0.00	-8336.52	3151.62	

RECEIVED  
Office Of Oil and Gas

OCT 08 2024

WV Department of  
Environmental Protection



# Actual Wellpath Report

Dixie Unit 2H AWP Proj: 15571'

Page 9 of 10



## REFERENCE WELLPATH IDENTIFICATION

Operator	ANTERO RESOURCES CORPORATION	Well	Dixie Unit 2H
Field	Doddridge	API	47-017-06959-0000
Facility	Genevieve Pad	Wellbore	Dixie Unit 2H AWB
Slot	Slot D		

## TARGETS

Name	TVD [ft]	North [ft]	East [ft]	Grid East [US ft]	Grid North [US ft]	Latitude	Longitude	Shape
Dixie Unit 2H BHL Rev-3	6513.23	-8346.82	3147.91	1705271.95	14264172.20	39°16'50.0335"N	80°46'14.9135"W	point
Dixie Unit 2H POE Rev-3	6528.00	-99.82	472.33	1702597.43	14272415.92	39°18'11.6098"N	80°46'48.6835"W	point
Dixie Unit 2H POE Rev-1	6536.00	194.64	376.80	1702501.94	14272710.26	39°18'14.5224"N	80°46'49.8897"W	point
Dixie Unit 2H LP Rev-3	6572.00	-339.72	550.16	1702675.23	14272176.11	39°18'9.2368"N	80°46'47.7009"W	point
Dixie Unit 2H 50' L/R Hard Line	6750.00	-4076.09	1762.36	1703886.95	14268441.23	39°17'32.2783"N	80°46'32.3987"W	rectangle

2D Rectangle 8979.73 x 100.

## WELLPATH COMPOSITION - Ref Wellbore: Dixie Unit 2H AWB Ref Wellpath: Dixie Unit 2H AWP Proj: 15571'

Start MD [ft]	End MD [ft]	Positional Uncertainty Model	Log Name/Comment	Wellbore	Survey Date
30.00	523.00	Gyrodata 2015 - GC+WIR+DPIPE	01 Gyrodata MS Gyro <17-1/2"> (100'-523')	Dixie Unit 2H AWB	3/1/2024
523.00	3165.00	BH NaviTrak (2019) (Axial Corr+HRGM)	02 APS EM <12-3/8"> (523')(675'-3165')	Dixie Unit 2H AWB	3/1/2024
3165.00	5844.00	BH NaviTrak (2019) (Axial Corr+HRGM)	03 APS EM <8-3/4"> (3165')(3296'-5844')	Dixie Unit 2H AWB	3/19/2024
5844.00	15571.00	BH AutoTrak Curve/eXpress (2019) (HRGM, Short spacing)	04 BH AT Curve <8-1/2"> (5844')(5897'-15546')	Dixie Unit 2H AWB	3/19/2024

RECEIVED  
Office Of Oil and Gas  
OCT 08 2024  
WV Department of  
Environmental Protection

RECEIVED  
Office Of Oil and Gas  
OCT 08 2024  
WV Department of  
Environmental Protection



# Actual Wellpath Report

Dixie Unit 2H AWP Proj: 15571'

Page 10 of 10



## REFERENCE WELLPATH IDENTIFICATION

Operator	ANTERO RESOURCES CORPORATION	Well	Dixie Unit 2H
Field	Doddridge	API	47-017-06959-0000
Facility	Genevieve Pad	Wellbore	Dixie Unit 2H AWB
Slot	Slot D		

## COMMENTS

### Wellpath general comments

API: 47-017-06959-0000  
BH Job #: 112150808  
Rig: H&P 519  
Duration: 3/22/2024-3/25/2024  
Gyrodatta MS Gyro <17-1/2"> (100'-523')  
APS EM <12-3/8"> (523')(675'-3165')  
APS EM <8-3/4"> (3165')(3296'-5844')  
BH AT Curve <8-1/2"> (5844')(5897'-15546')  
Sycamore: 6352' MD  
Middlesex: 6531' MD  
Burkett: 6731' MD  
Tully: 6790' MD  
Marcellus POE: 6901' MD  
Projected MD at TD: 15571'

RECEIVED  
Office Of Oil and Gas  
OCT 08 2024  
WV Department of  
Environmental Protection