



ANTERO RESOURCES CORPORATION

Location: Doddridge Co., WV
 Field: Doddridge
 Facility: Genevieve Pad

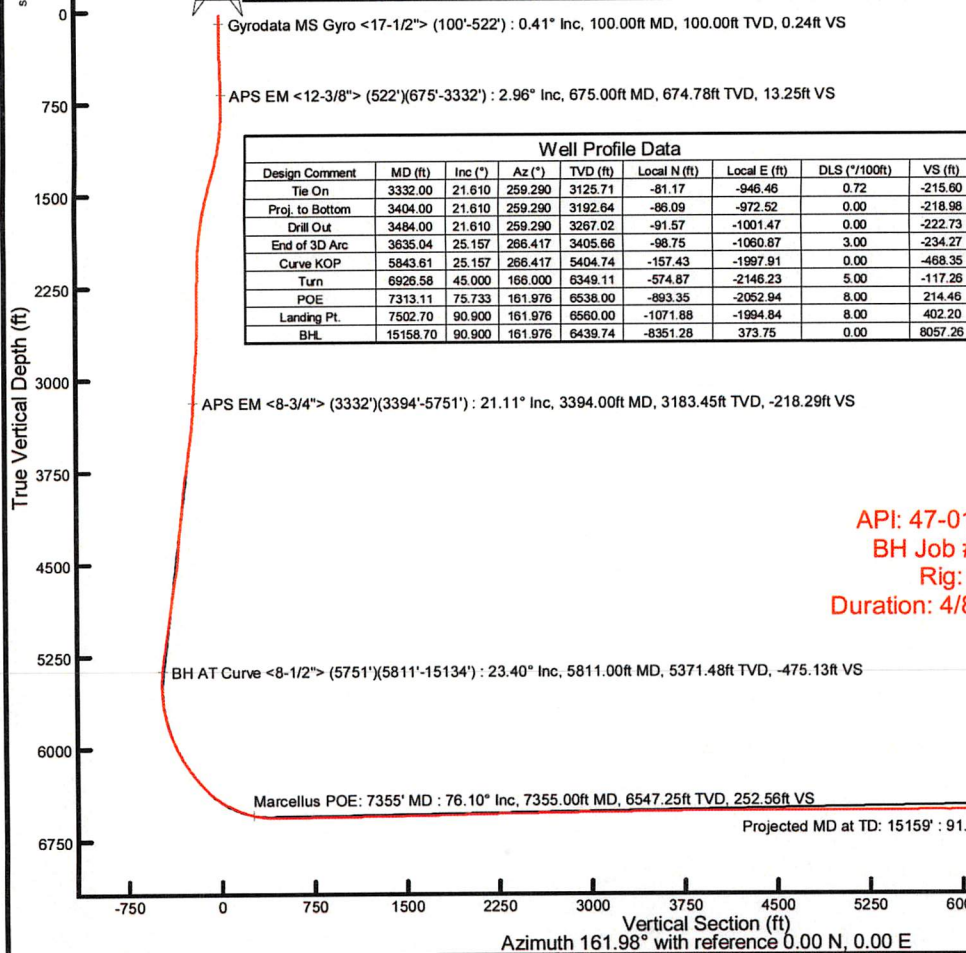
Slot: Slot A
 Well: Lyle Unit 1H
 Wellbore: Lyle Unit 1H PWB



Plot reference wellpath is Lyle Unit 1H PWP Rev-B.0	Grid System: NAD27 / UTM Zone 17 North, US feet
True vertical depths are referenced to H&P 519 (RKB)	North Reference: Grid north
Reference wellpath measured depths are referenced to H&P 519 (RKB)	Scale: True distance
H&P 519 (RKB) to Mean Sea Level: 916 feet	Coordinates are in feet referenced to Slot A
Mean Sea Level to Ground level (At Slot: Slot A): -886 feet	Depths are in feet
Offset wellpath MDs are referenced to each path's default MD datum	Created by: edsaryar on 2024-04-17; Database: WA_MPL_EASTERNUS_Defn

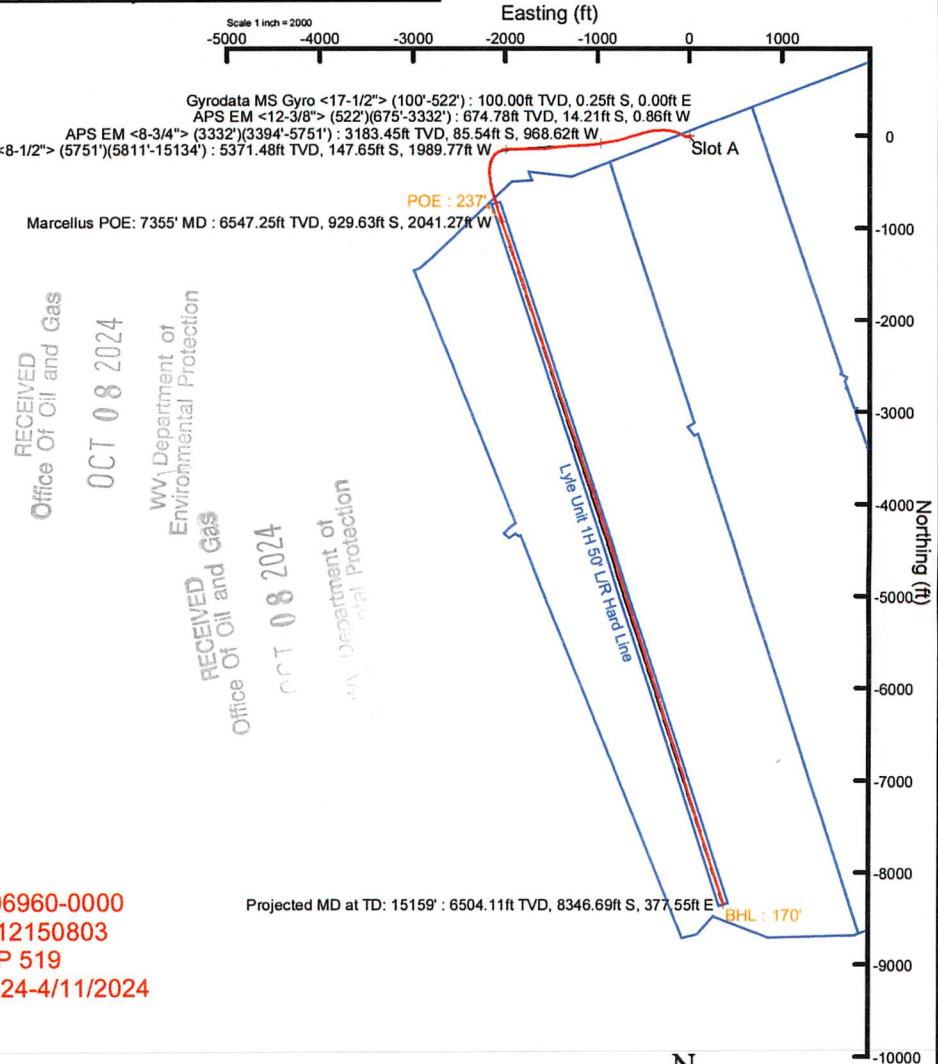
Location Information					
Facility Name	Grid East (US ft)	Grid North (US ft)	Latitude	Longitude	
Genevieve Pad	1702116.720	14272528.020	39°18'12.7297"N	80°46'54.7976"W	
Slot	Local N (ft)	Local E (ft)	Grid East (US ft)	Grid North (US ft)	Longitude
Slot A	24.63	-17.11	1702099.620	1427252.640	80°46'55.0145"W
Comment: Lyle Unit 1H					
H&P 519 (RKB) to Ground level (At Slot: Slot A)					30ft
Mean Sea Level to Ground level (At Slot: Slot A)					-886ft
H&P 519 (RKB) to Mean Sea Level					916ft

Well Data				
Slot	Well	Wellbore	Wellpath	
Slot A	Lyle Unit 1H	Lyle Unit 1H AWB	Lyle Unit 1H AWP Proj: 15159'	
Slot A	Lyle Unit 1H	Lyle Unit 1H PWB	Lyle Unit 1H PWP Rev-B.0	

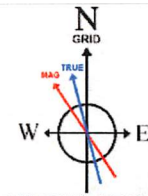


Well Profile Data							
Design Comment	MD (ft)	Inc (°)	Az (°)	TVD (ft)	Local N (ft)	Local E (ft)	VS (ft)
Tie On	3332.00	21.610	259.290	3125.71	-81.17	-946.46	-215.60
Proj. to Bottom	3404.00	21.610	259.290	3192.64	-86.09	-972.52	-218.98
Drill Out	3484.00	21.610	259.290	3267.02	-91.57	-1001.47	-222.73
End of 3D Arc	3635.04	25.157	266.417	3405.66	-98.75	-1060.87	-234.27
Curve KOP	5843.61	25.157	266.417	5404.74	-157.43	-1997.91	-468.35
Turn	6926.58	45.000	168.000	6349.11	-574.87	-2148.23	-117.26
POE	7313.11	75.733	161.976	6538.00	-893.35	-2052.94	214.46
Landing Pt.	7502.70	90.900	161.976	6560.00	-1071.88	-1994.84	402.20
BHL	15158.70	90.900	161.976	6439.74	-8351.28	373.75	8057.26

API: 47-017-06960-0000
 BH Job #: 112150803
 Rig: H&P 519
 Duration: 4/8/2024-4/11/2024



RECEIVED
 Office of Oil and Gas
 OCT 08 2024
 WV, Department of
 Environmental Protection
 RECEIVED
 Office of Oil and Gas
 OCT 08 2024
 WV, Department of
 Environmental Protection



User specified (HDGM) Dip: 65.98° Field: 51523 nT
 Magnetic North is 7.48 degrees West of True North (at 4/7/2024)
 Grid North is 0.14 degrees East of True North
 To correct azimuth from True to Grid subtract 0.14 degrees
 To correct azimuth from Magnetic to Grid subtract 7.62 degrees



Actual Wellpath Report

Lyle Unit 1H AWP Proj: 15159'
Page 1 of 10



REFERENCE WELLPATH IDENTIFICATION

Operator	ANTERO RESOURCES CORPORATION	Well	Lyle Unit 1H
Field	Doddridge	API	47-017-06960-0000
Facility	Genevieve Pad	Wellbore	Lyle Unit 1H AWB
Slot	Slot A		

REPORT SETUP INFORMATION

Projection System	NAD27 / UTM Zone 17 North, US feet	Software System	WellArchitect® 6.0
North Reference	Grid	User	Edsaryar
Scale	0.999604	Report Generated	4/17/2024 at 5:33:46 PM
Convergence at slot	0.14° East	Database	WA_MPL_EASTERNUS_Defn

WELLPATH LOCATION

	Local coordinates		Grid coordinates		Geographic coordinates	
	North[ft]	East[ft]	Easting[US ft]	Northing[US ft]	Latitude	Longitude
Slot Location	24.63	-17.11	1702099.62	14272552.64	39°18'12.9736"N	80°46'55.0145"W
Facility Reference Pt			1702116.72	14272528.02	39°18'12.7297"N	80°46'54.7976"W
Field Reference Pt			0.00	0.00	0°00'0.0000"	85°29'19.3013"W

WELLPATH DATUM

Calculation method	Minimum curvature	H&P 519 (RKB) to Facility Vertical Datum	916.00ft
Horizontal Reference Pt	Slot	H&P 519 (RKB) to Mean Sea Level	916.00ft
Vertical Reference Pt	H&P 519 (RKB)	H&P 519 (RKB) to Ground Level at Slot (Slot A)	30.00ft
MD Reference Pt	H&P 519 (RKB)	Section Origin	N 0.00, E 0.00 ft
Field Vertical Reference	Mean Sea Level	Section Azimuth	161.98°

RECEIVED
 Office Of Oil and Gas
 OCT 08 2024
 WV Department of
 Environmental Protection



Actual Wellpath Report

Lyle Unit 1H AWP Proj: 15159'
Page 2 of 10



REFERENCE WELLPATH IDENTIFICATION				
Operator	ANTERO RESOURCES CORPORATION		Well	Lyle Unit 1H
Field	Doddridge		API	47-017-06960-0000
Facility	Genevieve Pad		Wellbore	Lyle Unit 1H AWB
Slot	Slot A			

WELLPATH DATA (170 stations) † = interpolated, ‡ = extrapolated station																
MD [ft]	Inclination [°]	Azimuth [°]	TVD [ft]	Vert Sect [ft]	North [ft]	East [ft]	Grid East [US ft]	Grid North [US ft]	Latitude	Longitude	Closure Dist [ft]	Closure Dir [°]	DLS ["/100ft]	Build Rate ["/100ft]	Turn Rate ["/100ft]	Comments
0.00†	0.000	180.210	0.00	0.00	0.00	0.00	1702099.62	14272552.64	39°18'12.9736"N	80°46'55.0145"W	0.00	0.000	0.00	0.00	0.00	
30.00	0.000	180.210	30.00	0.00	0.00	0.00	1702099.62	14272552.64	39°18'12.9736"N	80°46'55.0145"W	0.00	0.000	0.00	0.00	0.00	
100.00	0.410	180.210	100.00	0.24	-0.25	0.00	1702099.62	14272552.39	39°18'12.9711"N	80°46'55.0145"W	0.25	180.210	0.59	0.59	0.00	Gyrodata MS Gyro <17-1/2"> (100'-522')
200.00	0.680	174.320	199.99	1.16	-1.20	0.06	1702099.68	14272551.44	39°18'12.9617"N	80°46'55.0138"W	1.20	177.301	0.28	0.27	-5.89	
300.00	1.180	169.990	299.98	2.76	-2.80	0.29	1702099.91	14272549.84	39°18'12.9459"N	80°46'55.0108"W	2.82	174.008	0.50	0.50	-4.33	
400.00	1.460	172.140	399.95	5.03	-5.08	0.65	1702100.27	14272547.56	39°18'12.9234"N	80°46'55.0064"W	5.12	172.736	0.28	0.28	2.15	
500.00	1.790	170.860	499.91	7.83	-7.88	1.07	1702100.69	14272544.76	39°18'12.8956"N	80°46'55.0011"W	7.96	172.272	0.33	0.33	-1.28	
522.00	1.940	170.270	521.90	8.54	-8.59	1.19	1702100.81	14272544.05	39°18'12.8886"N	80°46'54.9997"W	8.67	172.130	0.69	0.68	-2.68	
675.00	2.960	218.950	674.78	13.25	-14.21	-0.86	1702098.76	14272538.43	39°18'12.8331"N	80°46'55.0259"W	14.24	183.457	1.45	0.67	31.82	APS EM <12-3/8"> (522')(675'-3332')
764.00	6.220	248.600	763.49	14.79	-17.76	-6.79	1702092.83	14272534.88	39°18'12.7982"N	80°46'55.1015"W	19.02	200.933	4.42	3.66	33.31	
854.00	7.530	272.130	852.86	13.04	-19.32	-17.23	1702082.40	14272533.32	39°18'12.7830"N	80°46'55.2343"W	25.89	221.723	3.42	1.46	26.14	
944.00	9.300	285.350	941.89	7.01	-17.18	-30.14	1702069.49	14272535.47	39°18'12.8045"N	80°46'55.3984"W	34.69	240.317	2.90	1.97	14.69	
1033.00	11.500	291.120	1029.43	-2.54	-12.08	-45.35	1702054.29	14272540.57	39°18'12.8553"N	80°46'55.5918"W	46.93	255.088	2.73	2.47	6.48	
1128.00	13.500	296.040	1122.17	-16.24	-3.80	-64.15	1702035.50	14272548.85	39°18'12.9376"N	80°46'55.8307"W	64.26	266.614	2.38	2.11	5.18	
1222.00	16.730	297.720	1212.91	-33.56	7.32	-85.99	1702013.66	14272559.95	39°18'13.0479"N	80°46'56.1082"W	86.30	274.864	3.47	3.44	1.79	
1317.00	19.650	295.080	1303.16	-54.27	20.45	-112.57	1701987.10	14272573.08	39°18'13.1784"N	80°46'56.4459"W	114.41	280.297	3.19	3.07	-2.78	
1411.00	22.870	290.030	1390.75	-76.34	33.41	-144.05	1701955.62	14272586.04	39°18'13.3072"N	80°46'56.8460"W	147.88	283.058	3.94	3.43	-5.37	
1505.00	25.020	283.380	1476.67	-97.96	44.27	-180.57	1701919.13	14272596.89	39°18'13.4154"N	80°46'57.3101"W	185.91	283.776	3.67	2.29	-7.07	
1599.00	25.530	279.140	1561.68	-117.56	52.09	-219.91	1701879.80	14272604.71	39°18'13.4936"N	80°46'57.8103"W	225.99	283.326	2.00	0.54	-4.51	
1694.00	26.170	274.510	1647.19	-134.94	56.99	-261.01	1701838.72	14272609.61	39°18'13.5430"N	80°46'58.3330"W	267.16	282.317	2.23	0.67	-4.87	
1788.00	25.840	268.770	1731.68	-148.80	58.18	-302.16	1701797.58	14272610.80	39°18'13.5558"N	80°46'58.8565"W	307.71	280.899	2.70	-0.35	-6.11	
1882.00	27.250	266.530	1815.77	-160.12	56.44	-344.12	1701755.63	14272609.05	39°18'13.5396"N	80°46'59.3904"W	348.72	279.314	1.84	1.50	-2.38	
1977.00	27.180	264.620	1900.26	-170.34	53.09	-387.44	1701712.34	14272605.71	39°18'13.5075"N	80°46'59.9415"W	391.06	277.802	0.92	-0.07	-2.01	
2072.00	27.550	259.060	1984.64	-177.79	46.88	-430.62	1701669.18	14272599.50	39°18'13.4472"N	80°47'0.4909"W	433.16	276.213	2.72	0.39	-5.85	
2167.00	27.630	255.640	2068.84	-181.91	37.25	-473.53	1701626.28	14272589.87	39°18'13.3530"N	80°47'1.0371"W	474.99	274.498	1.67	0.08	-3.60	
2261.00	27.670	253.920	2152.11	-184.04	25.80	-515.62	1701584.21	14272578.43	39°18'13.2408"N	80°47'1.5729"W	516.26	272.864	0.85	0.04	-1.83	
2355.00	27.660	253.570	2235.36	-185.38	13.58	-557.52	1701542.33	14272566.21	39°18'13.1210"N	80°47'2.1063"W	557.68	271.395	0.17	-0.01	-0.37	
2450.00	27.420	253.600	2319.60	-186.61	1.17	-599.65	1701500.21	14272553.81	39°18'12.9993"N	80°47'2.6426"W	599.65	270.112	0.25	-0.25	0.03	
2544.00	25.840	253.490	2403.62	-187.76	-10.77	-640.06	1701459.82	14272541.88	39°18'12.8823"N	80°47'3.1570"W	640.15	269.036	1.68	-1.68	-0.12	
2638.00	25.370	253.180	2488.39	-188.72	-22.42	-678.98	1701420.91	14272530.23	39°18'12.7681"N	80°47'3.6524"W	679.35	268.109	0.52	-0.50	-0.33	

RECEIVED
Office Of Oil and Gas
OCT 08 2024
WV Department of
Environmental Protection



Actual Wellpath Report

Lyle Unit 1H AWP Proj: 15159'
Page 3 of 10



REFERENCE WELLPATH IDENTIFICATION				
Operator	ANTERO RESOURCES CORPORATION		Well	Lyle Unit 1H
Field	Doddridge		API	47-017-06960-0000
Facility	Genevieve Pad		Wellbore	Lyle Unit 1H AWB
Slot	Slot A			

WELLPATH DATA (170 stations)																
MD [ft]	Inclination [°]	Azimuth [°]	TVD [ft]	Vert Sect [ft]	North [ft]	East [ft]	Grid East [US ft]	Grid North [US ft]	Latitude	Longitude	Closure Dist [ft]	Closure Dir [°]	DLS [°/100ft]	Build Rate [°/100ft]	Turn Rate [°/100ft]	Comments
2733.00	24.810	251.640	2574.43	-189.03	-34.58	-717.37	1701382.53	14272518.07	39°18'12.6488"N	80°47'4.1413"W	718.21	267.240	0.91	-0.59	-1.62	
2827.00	23.950	254.060	2660.05	-189.61	-46.03	-754.44	1701345.48	14272506.62	39°18'12.5364"N	80°47'4.6131"W	755.84	266.508	1.40	-0.91	2.57	
2922.00	23.100	258.060	2747.16	-192.28	-55.19	-791.22	1701308.72	14272497.48	39°18'12.4469"N	80°47'5.0812"W	793.14	266.010	1.90	-0.89	4.21	
3016.00	23.210	260.920	2833.59	-197.11	-61.92	-827.55	1701272.40	14272490.74	39°18'12.3811"N	80°47'5.5436"W	829.86	265.721	1.20	0.12	3.04	
3110.00	22.760	262.560	2920.13	-203.33	-67.20	-863.87	1701236.09	14272485.46	39°18'12.3298"N	80°47'6.0058"W	866.48	265.552	0.83	-0.48	1.74	
3205.00	22.250	260.530	3007.89	-209.38	-72.54	-899.83	1701200.15	14272480.13	39°18'12.2779"N	80°47'6.4635"W	902.75	265.391	0.98	-0.54	-2.14	
3299.00	21.770	258.820	3095.04	-214.10	-78.85	-934.49	1701165.50	14272473.82	39°18'12.2163"N	80°47'6.9045"W	937.81	265.177	0.85	-0.51	-1.82	
3332.00	21.610	259.290	3125.71	-215.60	-81.17	-946.46	1701153.53	14272471.51	39°18'12.1937"N	80°47'7.0569"W	949.94	265.099	0.72	-0.48	1.42	
3394.00	21.110	258.350	3183.45	-218.29	-85.54	-968.62	1701131.39	14272467.13	39°18'12.1510"N	80°47'7.3388"W	972.39	264.953	0.98	-0.81	-1.52	APS EM <8-3/4"> (3332')(3394'-5751')
3488.00	22.540	260.330	3270.71	-222.79	-91.99	-1002.96	1701097.06	14272460.69	39°18'12.0881"N	80°47'7.7759"W	1007.17	264.760	1.71	1.52	2.11	
3580.00	24.520	263.900	3355.06	-229.29	-96.98	-1039.33	1701060.71	14272455.70	39°18'12.0396"N	80°47'8.2387"W	1043.84	264.669	2.65	2.15	3.88	
3674.00	26.100	264.480	3440.03	-237.80	-101.04	-1079.31	1701020.74	14272451.64	39°18'12.0004"N	80°47'8.7474"W	1084.03	264.652	1.70	1.68	0.62	
3769.00	27.650	267.390	3524.77	-248.18	-104.05	-1122.13	1700977.93	14272448.63	39°18'11.9716"N	80°47'9.2923"W	1126.95	264.702	2.14	1.63	3.06	
3863.00	27.610	265.380	3608.06	-259.02	-106.80	-1165.63	1700934.45	14272445.88	39°18'11.9455"N	80°47'9.8457"W	1170.51	264.765	0.99	-0.04	-2.14	
3957.00	27.290	267.630	3691.47	-269.89	-109.45	-1208.88	1700891.22	14272443.24	39°18'11.9203"N	80°47'10.3959"W	1213.82	264.827	1.15	-0.34	2.39	
4052.00	27.400	269.590	3775.86	-282.37	-110.50	-1252.50	1700847.62	14272442.18	39°18'11.9109"N	80°47'10.9508"W	1257.36	264.958	0.95	0.12	2.06	
4146.00	26.960	265.490	3859.49	-293.90	-112.34	-1295.37	1700804.76	14272440.35	39°18'11.8938"N	80°47'11.4963"W	1300.23	265.044	2.05	-0.47	-4.36	
4240.00	26.950	262.260	3943.28	-302.68	-116.88	-1337.72	1700762.43	14272435.81	39°18'11.8499"N	80°47'12.0352"W	1342.82	265.007	1.56	-0.01	-3.44	
4334.00	24.950	263.970	4027.80	-310.60	-121.83	-1378.55	1700721.62	14272430.86	39°18'11.8019"N	80°47'12.5547"W	1383.92	264.950	2.27	-2.13	1.82	
4429.00	22.890	267.010	4114.64	-319.55	-124.90	-1416.93	1700683.25	14272427.79	39°18'11.7725"N	80°47'13.0430"W	1422.43	264.962	2.53	-2.17	3.20	
4523.00	24.170	265.040	4200.82	-328.64	-127.52	-1454.36	1700645.84	14272425.17	39°18'11.7475"N	80°47'13.5193"W	1459.94	264.989	1.60	1.36	-2.10	
4618.00	24.640	263.450	4287.34	-336.98	-131.46	-1493.41	1700606.80	14272421.23	39°18'11.7094"N	80°47'14.0161"W	1499.19	264.969	0.85	0.49	-1.67	
4712.00	23.470	258.180	4373.18	-342.89	-137.53	-1531.21	1700569.02	14272415.17	39°18'11.6503"N	80°47'14.4971"W	1537.37	264.868	2.60	-1.24	-5.61	
4807.00	24.030	261.110	4460.14	-348.01	-144.39	-1568.84	1700531.41	14272408.30	39°18'11.5833"N	80°47'14.9760"W	1575.47	264.741	1.37	0.59	3.08	
4901.00	25.570	271.030	4545.50	-357.67	-146.99	-1608.05	1700492.21	14272405.71	39°18'11.5586"N	80°47'15.4749"W	1614.75	264.777	4.71	1.64	10.55	
4995.00	25.670	269.770	4630.26	-370.51	-146.71	-1648.69	1700451.59	14272405.99	39°18'11.5623"N	80°47'15.9919"W	1655.20	264.915	0.59	0.11	-1.34	
5090.00	25.300	271.700	4716.02	-383.65	-146.19	-1689.56	1700410.73	14272406.51	39°18'11.5684"N	80°47'16.5117"W	1695.87	265.055	0.96	-0.39	2.03	
5187.00	25.060	272.080	4803.80	-397.70	-144.83	-1730.81	1700369.50	14272407.87	39°18'11.5828"N	80°47'17.0364"W	1736.85	265.217	0.30	-0.25	0.39	
5282.00	24.030	268.230	4890.22	-410.03	-144.69	-1770.25	1700330.08	14272408.01	39°18'11.5850"N	80°47'17.5381"W	1776.15	265.327	2.00	-1.08	-4.05	
5376.00	24.860	269.650	4975.80	-421.38	-145.40	-1809.14	1700291.20	14272407.29	39°18'11.5789"N	80°47'18.0329"W	1814.97	265.405	1.08	0.88	1.51	

RECEIVED
Office Of Oil and Gas
OCT 08 2024
WV Department of
Environmental Protection



Actual Wellpath Report

Lyle Unit 1H AWP Proj: 15159'
Page 4 of 10



REFERENCE WELLPATH IDENTIFICATION			
Operator	ANTERO RESOURCES CORPORATION	Well	Lyle Unit 1H
Field	Doddridge	API	47-017-06960-0000
Facility	Genevieve Pad	Wellbore	Lyle Unit 1H AWB
Slot	Slot A		

WELLPATH DATA (170 stations) † = interpolated, ‡ = extrapolated station																
MD [ft]	Inclination [°]	Azimuth [°]	TVD [ft]	Vert Sect [ft]	North [ft]	East [ft]	Grid East [US ft]	Grid North [US ft]	Latitude	Longitude	Closure Dist [ft]	Closure Dir [°]	DLS [°/100ft]	Build Rate [°/100ft]	Turn Rate [°/100ft]	Comments
5470.00	24.750	269.800	5061.12	-433.40	-145.59	-1848.57	1700251.78	14272407.10	39°18'11.5780"N	80°47'18.5345"W	1854.30	265.497	0.13	-0.12	0.16	
5565.00	24.600	270.180	5147.45	-445.66	-145.60	-1888.23	1700212.14	14272407.10	39°18'11.5788"N	80°47'19.0390"W	1893.84	265.591	0.23	-0.16	0.40	
5659.00	24.920	270.790	5232.81	-458.16	-145.27	-1927.60	1700172.79	14272407.43	39°18'11.5830"N	80°47'19.5398"W	1933.07	265.690	0.44	0.34	0.65	
5751.00	24.030	266.490	5316.55	-469.10	-146.15	-1965.68	1700134.72	14272406.55	39°18'11.5752"N	80°47'20.0243"W	1971.11	265.748	2.16	-0.97	-4.67	
5811.00	23.400	266.370	5371.48	-475.13	-147.65	-1989.77	1700110.65	14272405.05	39°18'11.5609"N	80°47'20.3307"W	1995.24	265.756	1.05	-1.05	-0.20	BH AT Curve <8-1/2"> (5751')(5811'-15134')
5885.00	22.840	255.490	5439.57	-479.66	-152.18	-2018.35	1700082.08	14272400.52	39°18'11.5168"N	80°47'20.6944"W	2024.08	265.688	5.81	-0.76	-14.70	
5979.00	21.130	246.550	5526.75	-479.17	-163.50	-2051.56	1700048.87	14272389.21	39°18'11.4057"N	80°47'21.1173"W	2058.07	265.444	3.99	-1.82	-9.51	
6073.00	22.610	240.410	5614.00	-473.94	-179.16	-2082.83	1700017.62	14272373.55	39°18'11.2516"N	80°47'21.5154"W	2090.52	265.084	2.90	1.57	-6.53	
6168.00	22.820	224.640	5701.71	-461.81	-201.31	-2111.68	1699988.78	14272351.41	39°18'11.0333"N	80°47'21.8831"W	2121.25	264.554	6.40	0.22	-16.60	
6262.00	22.730	214.310	5788.42	-442.33	-229.29	-2134.73	1699965.74	14272323.44	39°18'10.7573"N	80°47'22.1772"W	2147.01	263.869	4.25	-0.10	-10.99	
6356.00	24.960	205.030	5874.42	-416.73	-262.28	-2153.37	1699947.11	14272290.46	39°18'10.4317"N	80°47'22.4153"W	2169.28	263.056	4.64	2.37	-9.87	
6450.00	27.080	195.390	5958.93	-384.36	-300.90	-2167.45	1699933.04	14272251.86	39°18'10.0503"N	80°47'22.5955"W	2188.23	262.096	5.03	2.26	-10.26	
6545.00	30.630	184.230	6042.18	-343.86	-345.93	-2174.98	1699925.51	14272206.85	39°18'9.6054"N	80°47'22.6926"W	2202.32	260.963	6.78	3.74	-11.75	
6639.00	33.950	178.540	6121.65	-296.52	-396.08	-2176.08	1699924.41	14272156.72	39°18'9.1098"N	80°47'22.7081"W	2211.83	259.684	4.79	3.53	-6.05	
6733.00	36.480	176.110	6198.44	-244.25	-450.21	-2173.51	1699926.97	14272102.61	39°18'8.5747"N	80°47'22.6770"W	2219.65	258.298	3.08	2.69	-2.59	
6755.00†	37.348	174.506	6216.03	-231.39	-463.38	-2172.43	1699928.06	14272089.45	39°18'8.4446"N	80°47'22.6637"W	2221.30	257.959	5.89	3.95	-7.29	Sycamore: 6755' MD
6828.00	40.370	169.620	6272.89	-186.32	-508.69	-2166.05	1699934.44	14272044.15	39°18'7.9965"N	80°47'22.5838"W	2224.98	256.784	5.89	4.14	-6.69	
6923.00	45.200	166.020	6342.60	-122.16	-571.71	-2152.35	1699948.13	14271981.16	39°18'7.3734"N	80°47'22.4114"W	2226.98	255.125	5.70	5.08	-3.79	
6927.00†	45.522	165.893	6345.41	-119.32	-574.47	-2151.66	1699948.82	14271978.40	39°18'7.3461"N	80°47'22.4027"W	2227.03	255.051	8.37	8.06	-3.17	Middlesex: 6927' MD
7017.00	52.810	163.360	6404.22	-51.35	-640.05	-2133.54	1699966.93	14271912.84	39°18'6.6974"N	80°47'22.1742"W	2227.48	253.301	8.37	8.10	-2.81	
7111.00	60.400	163.800	6455.92	27.04	-715.28	-2111.39	1699989.07	14271837.64	39°18'5.9534"N	80°47'21.8946"W	2229.25	251.285	8.08	8.07	0.47	
7148.00†	62.827	162.645	6473.51	59.58	-746.44	-2101.99	1699998.47	14271806.49	39°18'5.6452"N	80°47'21.7760"W	2230.59	250.449	7.11	6.56	-3.12	Burkett: 7148' MD
7206.00	66.650	160.930	6498.26	112.02	-796.25	-2085.59	1700014.86	14271756.70	39°18'5.1525"N	80°47'21.5688"W	2232.42	249.104	7.11	6.59	-2.96	
7216.00†	67.158	161.051	6502.18	121.22	-804.95	-2082.59	1700017.86	14271748.01	39°18'5.0665"N	80°47'21.5310"W	2232.74	248.868	5.20	5.08	1.21	Tully: 7216' MD
7300.00	71.430	162.030	6531.88	199.77	-879.46	-2057.72	1700042.71	14271673.52	39°18'4.3294"N	80°47'21.2169"W	2237.79	246.858	5.20	5.09	1.17	
7355.00†	76.105	161.650	6547.25	252.56	-929.63	-2041.27	1700059.16	14271623.38	39°18'3.8333"N	80°47'21.0090"W	2242.99	245.515	8.53	8.50	-0.69	Marcellus POE: 7355' MD
7394.00	79.420	161.390	6555.51	290.67	-965.77	-2029.19	1700071.24	14271587.25	39°18'3.4758"N	80°47'20.8564"W	2247.29	244.548	8.53	8.50	-0.67	
7489.00	87.970	161.270	6565.94	385.00	-1055.14	-1998.99	1700101.43	14271497.92	39°18'2.5917"N	80°47'20.4749"W	2260.37	242.173	9.00	9.00	-0.13	
7583.00	90.590	161.430	6567.12	478.98	-1144.19	-1968.93	1700131.47	14271408.90	39°18'1.7109"N	80°47'20.0953"W	2277.25	239.838	2.79	2.79	0.17	
7677.00	90.550	161.510	6566.18	572.97	-1233.32	-1939.06	1700161.33	14271319.82	39°18'0.8294"N	80°47'19.7179"W	2298.05	237.542	0.10	-0.04	0.09	

RECEIVED
 Office Of Oil and Gas
 OCT 08 2024
 WV Department of Environmental Protection



Actual Wellpath Report

Lyle Unit 1H AWP Proj: 15159'
Page 5 of 10



REFERENCE WELLPATH IDENTIFICATION			
Operator	ANTERO RESOURCES CORPORATION	Well	Lyle Unit 1H
Field	Doddridge	API	47-017-06960-0000
Facility	Genevieve Pad	Wellbore	Lyle Unit 1H AWB
Slot	Slot A		

WELLPATH DATA (170 stations)																
MD [ft]	Inclination [°]	Azimuth [°]	TVD [ft]	Vert Sect [ft]	North [ft]	East [ft]	Grid East [US ft]	Grid North [US ft]	Latitude	Longitude	Closure Dist [ft]	Closure Dir [°]	DLS [°/100ft]	Build Rate [°/100ft]	Turn Rate [°/100ft]	Comments
7772.00	90.680	161.400	6565.16	667.96	-1323.38	-1908.85	1700191.53	14271229.79	39°17'59.9385"N	80°47'19.3363"W	2322.72	235.267	0.18	0.14	-0.12	
7866.00	90.310	160.840	6564.35	761.95	-1412.32	-1878.43	1700221.93	14271140.89	39°17'59.0588"N	80°47'18.9520"W	2350.14	233.062	0.71	-0.39	-0.60	
7960.00	91.200	161.290	6563.11	855.93	-1501.22	-1847.93	1700252.42	14271052.02	39°17'58.1794"N	80°47'18.5667"W	2380.87	230.910	1.06	0.95	0.48	
8054.00	90.830	162.380	6561.45	949.91	-1590.52	-1818.63	1700281.71	14270962.75	39°17'57.2961"N	80°47'18.1967"W	2416.03	228.828	1.22	-0.39	1.16	
8149.00	90.280	162.290	6560.53	1044.90	-1681.04	-1789.81	1700310.52	14270872.27	39°17'56.4008"N	80°47'17.8327"W	2455.46	226.795	0.59	-0.58	-0.09	
8243.00	91.050	162.520	6559.43	1138.89	-1770.63	-1761.39	1700338.93	14270782.71	39°17'55.5146"N	80°47'17.4739"W	2497.53	224.850	0.85	0.82	0.24	
8337.00	90.430	162.010	6558.22	1232.88	-1860.16	-1732.76	1700367.55	14270693.22	39°17'54.6291"N	80°47'17.1124"W	2542.17	222.969	0.85	-0.66	-0.54	
8431.00	90.920	162.320	6557.11	1326.88	-1949.63	-1703.98	1700396.32	14270603.78	39°17'53.7441"N	80°47'16.7489"W	2589.32	221.153	0.62	0.52	0.33	
8525.00	90.950	161.280	6555.58	1420.86	-2038.92	-1674.62	1700425.67	14270514.53	39°17'52.8609"N	80°47'16.3782"W	2638.47	219.397	1.11	0.03	-1.11	
8619.00	90.800	161.710	6554.14	1514.85	-2128.05	-1644.79	1700455.48	14270425.44	39°17'51.9793"N	80°47'16.0014"W	2689.59	217.701	0.48	-0.16	0.46	
8713.00	90.950	161.330	6552.71	1608.83	-2217.19	-1615.00	1700485.26	14270336.33	39°17'51.0976"N	80°47'15.6251"W	2743.02	216.070	0.43	0.16	-0.40	
8808.00	91.320	161.760	6550.83	1703.81	-2307.28	-1584.93	1700515.32	14270246.27	39°17'50.2064"N	80°47'15.2453"W	2799.21	214.486	0.60	0.39	0.45	
8902.00	90.980	161.550	6548.94	1797.79	-2396.49	-1555.35	1700544.89	14270157.10	39°17'49.3240"N	80°47'14.8717"W	2856.97	212.984	0.43	-0.36	-0.22	
8996.00	91.570	161.480	6546.85	1891.76	-2485.62	-1525.56	1700574.67	14270068.01	39°17'48.4424"N	80°47'14.4954"W	2916.44	211.540	0.63	0.63	-0.07	
9090.00	91.290	162.350	6544.50	1985.73	-2574.94	-1496.38	1700603.83	14269978.72	39°17'47.5589"N	80°47'14.1270"W	2978.17	210.162	0.97	-0.30	0.93	
9184.00	90.520	161.360	6543.02	2079.72	-2664.26	-1467.11	1700633.09	14269889.44	39°17'46.6754"N	80°47'13.7574"W	3041.49	208.840	1.33	-0.82	-1.05	
9278.00	91.690	160.610	6541.20	2173.69	-2753.11	-1436.49	1700663.70	14269800.63	39°17'45.7966"N	80°47'13.3706"W	3105.34	207.554	1.48	1.24	-0.80	
9372.00	90.800	161.660	6539.16	2267.65	-2842.04	-1406.11	1700694.07	14269711.73	39°17'44.9169"N	80°47'12.9868"W	3170.85	206.324	1.46	-0.95	1.12	
9466.00	90.920	161.550	6537.75	2361.64	-2931.22	-1376.45	1700723.72	14269622.58	39°17'44.0347"N	80°47'12.6122"W	3238.31	205.154	0.17	0.13	-0.12	
9560.00	90.890	161.400	6536.27	2455.62	-3020.34	-1346.59	1700753.57	14269533.50	39°17'43.1532"N	80°47'12.2350"W	3306.93	204.029	0.16	-0.03	-0.16	
9655.00	90.890	161.210	6534.79	2550.61	-3110.32	-1316.14	1700784.00	14269443.56	39°17'42.2632"N	80°47'11.8504"W	3377.32	202.936	0.20	0.00	-0.20	
9749.00	90.890	161.380	6533.33	2644.59	-3199.34	-1286.00	1700814.13	14269354.57	39°17'41.3826"N	80°47'11.4697"W	3448.13	201.898	0.18	0.00	0.18	
9843.00	90.650	161.460	6532.07	2738.57	-3288.44	-1256.05	1700844.07	14269265.51	39°17'40.5013"N	80°47'11.0915"W	3520.15	200.905	0.27	-0.26	0.09	
9937.00	91.230	161.460	6530.53	2832.56	-3377.54	-1226.17	1700873.94	14269176.44	39°17'39.6199"N	80°47'10.7140"W	3593.23	199.953	0.62	0.62	0.00	
10031.00	90.990	161.230	6528.70	2926.53	-3466.59	-1196.10	1700903.99	14269087.43	39°17'38.7391"N	80°47'10.3343"W	3667.14	199.036	0.35	-0.26	-0.24	
10125.00	91.200	161.580	6526.91	3020.51	-3555.67	-1166.13	1700933.95	14268998.39	39°17'37.8580"N	80°47'9.9558"W	3742.01	198.158	0.43	0.22	0.37	
10219.00	90.490	161.380	6525.52	3114.50	-3644.79	-1136.28	1700963.79	14268909.30	39°17'36.9765"N	80°47'9.5788"W	3817.80	197.315	0.78	-0.76	-0.21	
10314.00	90.030	161.230	6525.09	3209.49	-3734.77	-1105.83	1700994.23	14268819.35	39°17'36.0864"N	80°47'9.1942"W	3895.05	196.494	0.51	-0.48	-0.16	
10408.00	90.520	161.220	6524.64	3303.48	-3823.77	-1075.58	1701024.47	14268730.39	39°17'35.2060"N	80°47'8.8121"W	3972.16	195.711	0.52	0.52	-0.01	
10502.00	90.920	161.530	6523.46	3397.47	-3912.84	-1045.56	1701054.48	14268641.36	39°17'34.3250"N	80°47'8.4330"W	4050.12	194.961	0.54	0.43	0.33	

RECEIVED
Office Of Oil and Gas
OCT 08 2024
WV Department of
Environmental Protection



Actual Wellpath Report

Lyle Unit 1H AWP Proj: 15159'
Page 6 of 10



REFERENCE WELLPATH IDENTIFICATION			
Operator	ANTERO RESOURCES CORPORATION	Well	Lyle Unit 1H
Field	Doddridge	API	47-017-06960-0000
Facility	Genevieve Pad	Wellbore	Lyle Unit 1H AWB
Slot	Slot A		

WELLPATH DATA (170 stations)																
MD [ft]	Inclination [°]	Azimuth [°]	TVD [ft]	Vert Sect [ft]	North [ft]	East [ft]	Grid East [US ft]	Grid North [US ft]	Latitude	Longitude	Closure Dist [ft]	Closure Dir [°]	DLS ["/100ft]	Build Rate ["/100ft]	Turn Rate ["/100ft]	Comments
10596.00	90.800	162.020	6522.05	3491.46	-4002.11	-1016.16	1701083.86	14268552.12	39°17'33.4420"N	80°47'8.0618"W	4129.10	194.247	0.54	-0.13	0.52	
10690.00	90.770	161.810	6520.76	3585.45	-4091.46	-986.99	1701113.03	14268462.80	39°17'32.5582"N	80°47'7.6934"W	4208.82	193.562	0.23	-0.03	-0.22	
10785.00	90.430	161.300	6519.77	3680.44	-4181.58	-956.93	1701143.07	14268372.73	39°17'31.6668"N	80°47'7.3138"W	4289.67	192.890	0.65	-0.36	-0.54	
10879.00	90.000	161.860	6519.41	3774.44	-4270.76	-927.23	1701172.76	14268283.58	39°17'30.7847"N	80°47'6.9387"W	4370.26	192.249	0.75	-0.46	0.60	
10974.00	90.430	160.950	6519.06	3869.43	-4360.80	-896.94	1701203.04	14268193.58	39°17'29.8940"N	80°47'6.5562"W	4452.08	191.623	1.06	0.45	-0.96	
11068.00	90.550	162.230	6518.25	3963.42	-4449.98	-867.25	1701232.71	14268104.43	39°17'29.0119"N	80°47'6.1813"W	4533.70	191.028	1.37	0.13	1.36	
11163.00	89.200	163.200	6518.46	4058.41	-4540.69	-839.02	1701260.93	14268013.76	39°17'28.1147"N	80°47'5.8250"W	4617.55	190.469	1.75	-1.42	1.02	
11257.00	90.400	161.610	6518.79	4152.40	-4630.29	-810.61	1701289.33	14267924.20	39°17'27.2285"N	80°47'5.4664"W	4700.71	189.930	2.12	1.28	-1.69	
11351.00	90.710	162.540	6517.88	4246.40	-4719.72	-781.68	1701318.25	14267834.80	39°17'26.3439"N	80°47'5.1011"W	4784.01	189.404	1.04	0.33	0.99	
11445.00	89.940	162.230	6517.34	4340.39	-4809.31	-753.24	1701346.68	14267745.24	39°17'25.4577"N	80°47'4.7421"W	4867.94	188.901	0.88	-0.82	-0.33	
11540.00	89.970	162.150	6517.42	4435.39	-4899.75	-724.18	1701375.73	14267654.83	39°17'24.5631"N	80°47'4.3752"W	4952.98	188.407	0.09	0.03	-0.08	
11634.00	90.340	161.850	6517.16	4529.39	-4989.15	-695.13	1701404.76	14267565.47	39°17'23.6788"N	80°47'4.0085"W	5037.35	187.932	0.51	0.39	-0.32	
11728.00	90.180	162.540	6516.74	4623.39	-5078.65	-666.39	1701433.49	14267476.01	39°17'22.7936"N	80°47'3.6457"W	5122.18	187.475	0.75	-0.17	0.73	
11822.00	89.450	162.890	6517.04	4717.38	-5168.40	-638.46	1701461.41	14267386.29	39°17'21.9058"N	80°47'3.2932"W	5207.69	187.042	0.86	-0.78	0.37	
11916.00	90.550	161.910	6517.04	4811.37	-5258.00	-610.04	1701489.82	14267296.73	39°17'21.0196"N	80°47'2.9344"W	5293.27	186.618	1.57	1.17	-1.04	
12011.00	90.310	163.030	6516.33	4906.37	-5348.58	-581.43	1701518.43	14267206.18	39°17'20.1236"N	80°47'2.5732"W	5380.09	186.204	1.21	-0.25	1.18	
12105.00	90.060	162.150	6516.02	5000.36	-5438.28	-553.30	1701546.54	14267116.53	39°17'19.2365"N	80°47'2.2182"W	5466.35	185.809	0.97	-0.27	-0.94	
12199.00	90.370	162.160	6515.67	5094.36	-5527.75	-524.50	1701575.33	14267027.08	39°17'18.3514"N	80°47'1.8546"W	5552.58	185.420	0.33	0.33	0.01	
12293.00	89.910	162.390	6515.44	5188.36	-5617.29	-495.88	1701603.94	14266937.58	39°17'17.4658"N	80°47'1.4934"W	5639.14	185.045	0.55	-0.49	0.24	
12388.00	90.180	161.970	6515.37	5283.36	-5707.73	-466.80	1701633.00	14266847.18	39°17'16.5712"N	80°47'1.1264"W	5726.79	184.676	0.53	0.28	-0.44	
12483.00	90.030	162.610	6515.19	5378.35	-5798.23	-437.91	1701661.89	14266756.72	39°17'15.6761"N	80°47'0.7616"W	5814.74	184.319	0.69	-0.16	0.67	
12577.00	89.660	161.850	6515.45	5472.35	-5887.74	-409.22	1701690.56	14266667.24	39°17'14.7907"N	80°47'0.3994"W	5901.95	183.976	0.90	-0.39	-0.81	
12671.00	90.620	161.850	6515.22	5566.35	-5977.07	-379.94	1701719.83	14266577.95	39°17'13.9072"N	80°47'0.0298"W	5989.13	183.637	1.02	1.02	0.00	
12765.00	90.370	162.850	6514.41	5660.34	-6066.64	-351.44	1701748.32	14266488.42	39°17'13.0212"N	80°46'59.6700"W	6076.81	183.315	1.10	-0.27	1.06	
12860.00	90.120	162.790	6514.00	5755.33	-6157.40	-323.38	1701776.37	14266397.69	39°17'12.1235"N	80°46'59.3159"W	6165.88	183.006	0.27	-0.26	-0.06	
12954.00	89.290	163.760	6514.48	5849.30	-6247.42	-296.33	1701803.41	14266307.71	39°17'11.2331"N	80°46'58.9747"W	6254.44	182.716	1.36	-0.88	1.03	
13048.00	91.540	163.120	6513.80	5943.26	-6337.51	-269.54	1701830.19	14266217.65	39°17'10.3420"N	80°46'58.6367"W	6343.24	182.435	2.49	2.39	-0.68	
13143.00	89.910	160.620	6512.60	6038.25	-6427.78	-239.98	1701859.73	14266127.42	39°17'9.4492"N	80°46'58.2636"W	6432.25	182.138	3.14	-1.72	-2.63	
13237.00	90.310	162.520	6512.42	6132.24	-6516.95	-210.27	1701889.44	14266038.28	39°17'8.5671"N	80°46'57.8884"W	6520.34	181.848	2.07	0.43	2.02	
13331.00	89.780	162.480	6512.35	6226.23	-6606.60	-182.00	1701917.69	14265948.67	39°17'7.6803"N	80°46'57.5316"W	6609.11	181.578	0.57	-0.56	-0.04	

RECEIVED
Office Of Oil and Gas
OCT 08 2024
WV Department of
Environmental Protection



Actual Wellpath Report

Lyle Unit 1H AWP Proj: 15159'
Page 7 of 10



REFERENCE WELLPATH IDENTIFICATION			
Operator	ANTERO RESOURCES CORPORATION	Well	Lyle Unit 1H
Field	Doddridge	API	47-017-06960-0000
Facility	Genevieve Pad	Wellbore	Lyle Unit 1H AWB
Slot	Slot A		

WELLPATH DATA (170 stations) † = interpolated, ‡ = extrapolated station																
MD [ft]	Inclination [°]	Azimuth [°]	TVD [ft]	Vert Sect [ft]	North [ft]	East [ft]	Grid East [US ft]	Grid North [US ft]	Latitude	Longitude	Closure Dist [ft]	Closure Dir [°]	DLS ["/100ft]	Build Rate ["/100ft]	Turn Rate ["/100ft]	Comments
13426.00	90.000	160.740	6512.53	6321.23	-6696.74	-152.03	1701947.65	14265858.56	39°17'6.7887"N	80°46'57.1532"W	6698.47	181.301	1.85	0.23	-1.83	
13520.00	90.710	162.160	6511.95	6415.22	-6785.86	-122.13	1701977.54	14265769.48	39°17'5.9072"N	80°46'56.7757"W	6786.95	181.031	1.69	0.76	1.51	
13614.00	90.180	162.450	6511.22	6509.22	-6875.41	-93.56	1702006.10	14265679.97	39°17'5.0214"N	80°46'56.4151"W	6876.04	180.780	0.64	-0.56	0.31	
13709.00	90.250	162.280	6510.86	6604.21	-6965.94	-64.78	1702034.87	14265589.47	39°17'4.1259"N	80°46'56.0518"W	6966.24	180.533	0.19	0.07	-0.18	
13803.00	89.910	163.290	6510.73	6698.20	-7055.73	-36.96	1702062.68	14265499.72	39°17'3.2378"N	80°46'55.7008"W	7055.82	180.300	1.13	-0.36	1.07	
13898.00	90.250	162.110	6510.60	6793.19	-7146.43	-8.71	1702090.92	14265409.05	39°17'2.3407"N	80°46'55.3443"W	7146.43	180.070	1.29	0.36	-1.24	
13993.00	90.680	162.050	6509.82	6888.19	-7236.82	20.52	1702120.14	14265318.70	39°17'1.4467"N	80°46'54.9753"W	7236.85	179.838	0.46	0.45	-0.06	
14087.00	89.780	163.120	6509.45	6982.18	-7326.50	48.66	1702148.26	14265229.05	39°17'0.5595"N	80°46'54.6203"W	7326.67	179.620	1.49	-0.96	1.14	
14182.00	90.180	163.740	6509.48	7077.15	-7417.56	75.75	1702175.34	14265138.03	39°16'59.6589"N	80°46'54.2785"W	7417.95	179.415	0.78	0.42	0.65	
14276.00	91.080	160.970	6508.45	7171.13	-7507.12	104.24	1702203.81	14265048.50	39°16'58.7730"N	80°46'53.9190"W	7507.84	179.204	3.10	0.96	-2.95	
14370.00	89.630	162.340	6507.86	7265.12	-7596.34	133.82	1702233.39	14264959.32	39°16'57.8905"N	80°46'53.5455"W	7597.52	178.991	2.12	-1.54	1.46	
14465.00	90.830	161.960	6507.48	7360.12	-7686.76	162.94	1702262.49	14264868.93	39°16'56.9961"N	80°46'53.1780"W	7688.49	178.786	1.32	1.26	-0.40	
14559.00	90.030	161.850	6506.78	7454.12	-7776.11	192.13	1702291.68	14264779.62	39°16'56.1123"N	80°46'52.8095"W	7778.48	178.585	0.86	-0.85	-0.12	
14653.00	90.220	162.130	6506.57	7548.12	-7865.50	221.20	1702320.73	14264690.26	39°16'55.2281"N	80°46'52.4426"W	7868.61	178.389	0.36	0.20	0.30	
14748.00	90.180	162.600	6506.24	7643.11	-7956.04	249.98	1702349.50	14264599.77	39°16'54.3326"N	80°46'52.0794"W	7959.96	178.200	0.50	-0.04	0.49	
14843.00	88.860	161.470	6507.04	7738.11	-8046.40	279.28	1702378.78	14264509.44	39°16'53.4388"N	80°46'51.7096"W	8051.25	178.012	1.83	-1.39	-1.19	
14937.00	91.080	161.990	6507.09	7832.10	-8135.66	308.74	1702408.24	14264420.22	39°16'52.5559"N	80°46'51.3376"W	8141.51	177.827	2.43	2.36	0.55	
15031.00	90.090	162.440	6506.13	7926.09	-8225.16	337.45	1702436.94	14264330.75	39°16'51.6706"N	80°46'50.9752"W	8232.08	177.651	1.16	-1.05	0.48	
15134.00	91.450	161.270	6504.74	8029.08	-8323.02	369.52	1702469.00	14264232.93	39°16'50.7026"N	80°46'50.5704"W	8331.22	177.458	1.74	1.32	-1.14	
15159.00‡	91.450	161.270	6504.11	8054.07	-8346.69	377.55	1702477.02	14264209.27	39°16'50.4684"N	80°46'50.4691"W	8355.23	177.410	0.00	0.00	0.00	Projected MD at TD: 15159'

RECEIVED
Office Of Oil and Gas
OCT 08 2024
WV Department of
Environmental Protection



Actual Wellpath Report

Lyle Unit 1H AWP Proj: 15159'
Page 8 of 10



REFERENCE WELLPATH IDENTIFICATION

Operator	ANTERO RESOURCES CORPORATION	Well	Lyle Unit 1H
Field	Doddridge	API	47-017-06960-0000
Facility	Genevieve Pad	Wellbore	Lyle Unit 1H AWB
Slot	Slot A		

HOLE & CASING SECTIONS - Ref Wellbore: Lyle Unit 1H AWB Ref Wellpath: Lyle Unit 1H AWP Proj: 15159'

String/Diameter	Start MD [ft]	End MD [ft]	Interval [ft]	Start TVD [ft]	End TVD [ft]	Start N/S [ft]	Start E/W [ft]	End N/S [ft]	End E/W [ft]
20in Conductor	30.00	130.00	100.00	30.00	130.00	0.00	0.00	-0.49	0.00
17.5in Open Hole	130.00	622.00	492.00	130.00	621.83	-0.49	0.00	-12.15	0.51
13.375in Casing Surface	30.00	602.00	572.00	30.00	601.85	0.00	0.00	-11.40	0.85
12.375in Open Hole	622.00	3404.00	2782.00	621.83	3192.77	-12.15	0.51	-86.26	-972.16
9.625in Casing Intermediate	30.00	3373.00	3343.00	30.00	3163.87	0.00	0.00	-84.03	-961.18
8.75in Open Hole	3404.00	5829.00	2425.00	3192.77	5388.01	-86.26	-972.16	-148.26	-1996.86
8.5in Open Hole	5829.00	15159.00	9330.00	5388.01	6504.11	-148.26	-1996.86	-8346.69	377.55
5.5in Casing Production	30.00	15139.00	15109.00	30.00	6504.62	0.00	0.00	-8327.76	371.13

RECEIVED
Office Of Oil and Gas

OCT 08 2024

WV Department of
Environmental Protection



Actual Wellpath Report

Lyle Unit 1H AWP Proj: 15159'
Page 9 of 10



REFERENCE WELLPATH IDENTIFICATION			
Operator	ANTERO RESOURCES CORPORATION	Well	Lyle Unit 1H
Field	Doddridge	API	47-017-06960-0000
Facility	Genevieve Pad	Wellbore	Lyle Unit 1H AWB
Slot	Slot A		

TARGETS								
Name	TVD [ft]	North [ft]	East [ft]	Grid East [US ft]	Grid North [US ft]	Latitude	Longitude	Shape
Lyle Unit 1H BHL Rev-3	6439.74	-8351.28	373.75	1702473.22	14264204.68	39°16'50.4232"N	80°46'50.5176"W	point
Lyle Unit 1H POE Rev-1	6536.00	-732.73	-2105.20	1699995.26	14271820.20	39°18'5.7808"N	80°47'21.8164"W	point
Lyle Unit 1H POE Rev-3	6538.00	-893.35	-2052.94	1700047.50	14271659.65	39°18'4.1921"N	80°47'21.1564"W	point
Lyle Unit 1H LP Rev-3	6560.00	-1071.88	-1994.84	1700105.57	14271481.18	39°18'2.4262"N	80°47'20.4227"W	point
Lyle Unit 1H 50' L/R Hard Line	6750.00	-4542.01	-865.72	1701234.24	14268012.44	39°17'28.1023"N	80°47'6.1647"W	rectangle
2D Rectangle 8011.71 x 100.								

WELLPATH COMPOSITION - Ref Wellbore: Lyle Unit 1H AWB Ref Wellpath: Lyle Unit 1H AWP Proj: 15159'					
Start MD [ft]	End MD [ft]	Positional Uncertainty Model	Log Name/Comment	Wellbore	Survey Date
30.00	522.00	Gyrodata 2015 - GC+WIR+DPIPE	01 Gyrodata MS Gyro <17-1/2"> (100'-522')	Lyle Unit 1H AWB	2/20/2024
522.00	3332.00	BH NaviTrak (2019) (Axial Corr+HRGM)	02 APS EM <12-3/8"> (522')(675'-3332')	Lyle Unit 1H AWB	2/20/2024
3332.00	5751.00	BH NaviTrak (2019) (Axial Corr+HRGM)	03 APS EM <8-3/4"> (3332')(3394'-5751')	Lyle Unit 1H AWB	4/7/2024
5751.00	15159.00	BH AutoTrak Curve/eXpress (2019) (HRGM, Short spacing)	04 BH AT Curve <8-1/2"> (5751')(5811'-15134')	Lyle Unit 1H AWB	4/7/2024

RECEIVED
Office Of Oil and Gas

OCT 08 2024

WV Department of
Environmental Protection



Actual Wellpath Report

Lyle Unit 1H AWP Proj: 15159'

Page 10 of 10



REFERENCE WELLPATH IDENTIFICATION

Operator	ANTERO RESOURCES CORPORATION	Well	Lyle Unit 1H
Field	Doddridge	API	47-017-06960-0000
Facility	Genevieve Pad	Wellbore	Lyle Unit 1H AWB
Slot	Slot A		

COMMENTS

Wellpath general comments

API: 47-017-06960-0000
BH Job #: 112150803
Rig: H&P 519
Duration: 4/8/2024-4/11/2024
Gyrodatta MS Gyro <17-1/2"> (100'-522')
APS EM <12-3/8"> (522')(675'-3332')
APS EM <8-3/4"> (3332')(3394'-5751')
BH AT Curve <8-1/2"> (5751')(5811'-15134')
Sycamore: 6755' MD
Middlesex: 6927' MD
Burkett: 7148' MD
Tully: 7216' MD
Marcellus POE: 7355' MD
Projected MD at TD: 15159'

RECEIVED
Office Of Oil and Gas

OCT 08 2024

WV Department of
Environmental Protection