



# ANTERO RESOURCES CORPORATION

Location: Doddridge Co., WV  
 Field: Doddridge  
 Facility: Genevieve Pad

Slot: Slot E  
 Well: Holtz Unit 1H  
 Wellbore: Holtz Unit 1H PWB

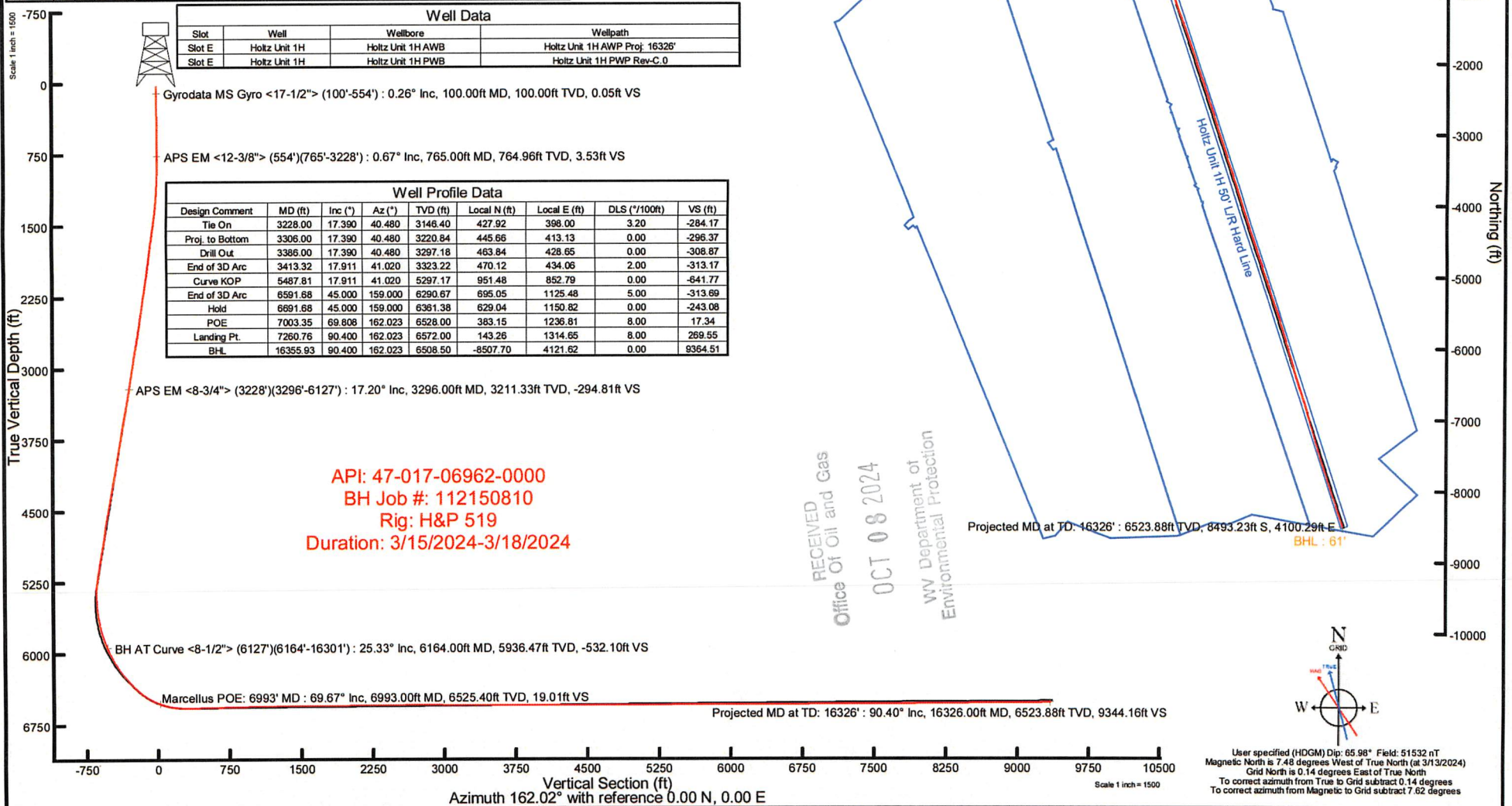


Plot reference wellpath is Holtz Unit 1H PWP Rev-C.0	Grid System: NAD27 / UTM Zone 17 North, US feet
True vertical depths are referenced to H&P 519 (RKB)	North Reference: Grid north
Reference wellpath measured depths are referenced to H&P 519 (RKB)	Scale: True distance
H&P 519 (RKB) to Mean Sea Level: 916 feet	Coordinates are in feet referenced to Slot
Mean Sea Level to Ground level (At Slot: Slot E): -886 feet	Depths are in feet
Offset wellpath MDs are referenced to each path's default MD datum	Created by: edsaryar on 2024-04-12; Database: WA_MPL_EASTERNS_Deln

Location Information				
Facility Name	Grid East (US ft)	Grid North (US ft)	Latitude	Longitude
Genevieve Pad	1702116.720	14272528.020	39°18'12.7297"N	80°46'54.7976"W
Slot	Local N (ft)	Local E (ft)	Latitude	Longitude
Slot E	-24.64	17.13	1702133.840	14272503.390
39°18'12.4858"N			80°46'54.5805"W	
Comment: Holtz Unit 1H				
H&P 519 (RKB) to Ground level (At Slot: Slot E): 30ft				
Mean Sea Level to Ground level (At Slot: Slot E): -886ft				
H&P 519 (RKB) to Mean Sea Level: 916ft				

Well Data			
Slot	Well	Wellbore	Wellpath
Slot E	Holtz Unit 1H	Holtz Unit 1H AWB	Holtz Unit 1H AWP Proj: 16326'
Slot E	Holtz Unit 1H	Holtz Unit 1H PWB	Holtz Unit 1H PWP Rev-C.0

Well Profile Data								
Design Comment	MD (ft)	Inc (")	Az (°)	TVD (ft)	Local N (ft)	Local E (ft)	DLS ("/100ft)	VS (ft)
Tie On	3228.00	17.390	40.480	3148.40	427.92	398.00	3.20	-284.17
Proj. to Bottom	3306.00	17.390	40.480	3220.84	445.66	413.13	0.00	-296.37
Drill Out	3386.00	17.390	40.480	3297.18	463.84	428.65	0.00	-308.87
End of 3D Arc	3413.32	17.911	41.020	3323.22	470.12	434.06	2.00	-313.17
Curve KOP	5487.81	17.911	41.020	5297.17	951.48	852.79	0.00	-641.77
End of 3D Arc	6591.68	45.000	159.000	6290.67	695.05	1125.68	5.00	-313.69
Hold	6691.68	45.000	159.000	6361.38	629.04	1150.82	0.00	-243.08
POE	7003.35	69.808	162.023	6528.00	383.15	1236.81	8.00	17.34
Landing Pt.	7260.76	90.400	162.023	6572.00	143.26	1314.65	8.00	269.55
BHL	16355.93	90.400	162.023	6508.50	-8507.70	4121.62	0.00	9364.51





# Actual Wellpath Report

Holtz Unit 1H AWP Proj: 16326'  
Page 1 of 10



REFERENCE WELLPATH IDENTIFICATION			
Operator	ANTERO RESOURCES CORPORATION	Well	Holtz Unit 1H
Field	Doddridge	API	47-017-06962-0000
Facility	Genevieve Pad	Wellbore	Holtz Unit 1H AWB
Slot	Slot E		

REPORT SETUP INFORMATION			
Projection System	NAD27 / UTM Zone 17 North, US feet	Software System	WellArchitect® 6.0
North Reference	Grid	User	Edsaryar
Scale	0.999604	Report Generated	4/12/2024 at 4:03:06 PM
Convergence at slot	0.14° East	Database	WA_MPL_EASTERNUS_Defn

WELLPATH LOCATION						
	Local coordinates		Grid coordinates		Geographic coordinates	
	North[ft]	East[ft]	Easting[US ft]	Northing[US ft]	Latitude	Longitude
Slot Location	-24.64	17.13	1702133.84	14272503.39	39°18'12.4858"N	80°46'54.5805"W
Facility Reference Pt			1702116.72	14272528.02	39°18'12.7297"N	80°46'54.7976"W
Field Reference Pt			0.00	0.00	0°00'0.0000"	85°29'19.3013"W

WELLPATH DATUM			
Calculation method	Minimum curvature	H&P 519 (RKB) to Facility Vertical Datum	916.00ft
Horizontal Reference Pt	Slot	H&P 519 (RKB) to Mean Sea Level	916.00ft
Vertical Reference Pt	H&P 519 (RKB)	H&P 519 (RKB) to Ground Level at Slot (Slot E)	30.00ft
MD Reference Pt	H&P 519 (RKB)	Section Origin	N 0.00, E 0.00 ft
Field Vertical Reference	Mean Sea Level	Section Azimuth	162.02°

RECEIVED  
Office Of Oil and Gas

OCT 08 2024

WV Department of  
Environmental Protection



# Actual Wellpath Report

Holtz Unit 1H AWP Proj: 16326'  
Page 2 of 10



REFERENCE WELLPATH IDENTIFICATION			
Operator	ANTERO RESOURCES CORPORATION	Well	Holtz Unit 1H
Field	Doddridge	API	47-017-06962-0000
Facility	Genevieve Pad	Wellbore	Holtz Unit 1H AWB
Slot	Slot E		

WELLPATH DATA (181 stations) † = interpolated, ‡ = extrapolated station																
MD [ft]	Inclination [°]	Azimuth [°]	TVD [ft]	Vert Sect [ft]	North [ft]	East [ft]	Grid East [US ft]	Grid North [US ft]	Latitude	Longitude	Closure Dist [ft]	Closure Dir [°]	DLS ["/100ft]	Build Rate ["/100ft]	Turn Rate ["/100ft]	Comments
0.00	0.00	90.830	0.00	0.00	0.00	0.00	1702133.84	14272503.39	39°18'12.4858"N	80°46'54.5805"W	0.00	0.000	0.00	0.00	0.00	
30.00	0.00	90.830	30.00	0.00	0.00	0.00	1702133.84	14272503.39	39°18'12.4858"N	80°46'54.5805"W	0.00	0.000	0.00	0.00	0.00	
100.00	0.260	90.830	100.00	0.05	0.00	0.16	1702134.00	14272503.39	39°18'12.4858"N	80°46'54.5785"W	0.16	90.830	0.37	0.37	0.00	Gyrodatta MS Gyro <17-1/2"> (100'-554')
200.00	0.550	113.600	200.00	0.44	-0.20	0.83	1702134.67	14272503.19	39°18'12.4838"N	80°46'54.5700"W	0.85	103.471	0.33	0.29	22.77	
300.00	0.650	112.610	299.99	1.13	-0.61	1.79	1702135.63	14272502.78	39°18'12.4797"N	80°46'54.5578"W	1.89	108.770	0.10	0.10	-0.99	
400.00	0.760	109.730	399.98	1.91	-1.05	2.94	1702136.78	14272502.34	39°18'12.4753"N	80°46'54.5432"W	3.12	109.672	0.12	0.11	-2.88	
500.00	0.730	100.370	499.98	2.61	-1.39	4.19	1702138.03	14272502.00	39°18'12.4720"N	80°46'54.5273"W	4.41	108.343	0.13	-0.03	-9.36	
554.00	0.740	92.560	553.97	2.90	-1.47	4.87	1702138.71	14272501.92	39°18'12.4712"N	80°46'54.5186"W	5.09	106.738	0.19	0.02	-14.46	
765.00	0.670	78.990	764.96	3.53	-1.29	7.45	1702141.28	14272502.10	39°18'12.4728"N	80°46'54.4858"W	7.56	99.837	0.09	-0.03	-6.43	APS EM <12-3/8"> (554')(765'-3228')
855.00	1.860	56.050	854.93	3.19	-0.38	9.17	1702143.01	14272503.02	39°18'12.4819"N	80°46'54.4638"W	9.18	92.341	1.41	1.32	-25.49	
945.00	3.180	44.840	944.84	1.65	2.21	12.15	1702145.98	14272505.60	39°18'12.5074"N	80°46'54.4259"W	12.35	79.684	1.56	1.47	-12.46	
1035.00	4.810	38.900	1034.62	-1.56	6.92	16.28	1702150.11	14272510.31	39°18'12.5538"N	80°46'54.3733"W	17.69	66.974	1.87	1.81	-6.60	
1129.00	5.020	35.410	1128.28	-6.16	13.34	21.13	1702154.97	14272516.72	39°18'12.6171"N	80°46'54.3113"W	24.99	57.746	0.39	0.22	-3.71	
1224.00	6.070	35.730	1222.83	-11.61	20.80	26.48	1702160.31	14272524.18	39°18'12.6908"N	80°46'54.2431"W	33.67	51.844	1.11	1.11	0.34	
1318.00	8.200	35.850	1316.10	-18.51	30.27	33.31	1702167.13	14272533.65	39°18'12.7842"N	80°46'54.1559"W	45.01	47.732	2.27	2.27	0.13	
1412.00	10.770	37.660	1408.81	-27.43	42.66	42.60	1702176.42	14272546.03	39°18'12.9064"N	80°46'54.0373"W	60.29	44.959	2.75	2.73	1.93	
1506.00	13.530	38.470	1500.69	-38.46	58.22	54.81	1702188.63	14272561.59	39°18'13.0600"N	80°46'53.8815"W	79.96	43.269	2.94	2.94	0.86	
1601.00	15.610	39.960	1592.63	-51.39	76.72	69.93	1702203.74	14272580.08	39°18'13.2424"N	80°46'53.6886"W	103.81	42.348	2.22	2.19	1.57	
1695.00	17.560	45.330	1682.72	-64.48	96.39	88.14	1702221.95	14272599.74	39°18'13.4364"N	80°46'53.4563"W	130.61	42.441	2.64	2.07	5.71	
1789.00	18.920	48.590	1772.00	-76.90	116.44	109.66	1702243.45	14272619.78	39°18'13.6340"N	80°46'53.1820"W	159.95	43.282	1.81	1.45	3.47	
1883.00	19.090	47.380	1860.87	-89.37	136.93	132.40	1702266.19	14272640.27	39°18'13.8360"N	80°46'52.8921"W	190.47	44.036	0.46	0.18	-1.29	
1978.00	19.310	47.290	1950.59	-102.42	158.10	155.37	1702289.15	14272661.43	39°18'14.0447"N	80°46'52.5992"W	221.67	44.501	0.23	0.23	-0.09	
2073.00	19.220	45.600	2040.27	-115.95	179.70	178.09	1702311.86	14272683.02	39°18'14.2576"N	80°46'52.3096"W	252.99	44.742	0.59	-0.09	-1.78	
2262.00	17.310	45.260	2219.74	-142.45	221.26	220.29	1702354.04	14272724.56	39°18'14.6674"N	80°46'51.7714"W	312.22	44.874	1.01	-1.01	-0.18	
2356.00	16.740	44.670	2309.62	-154.97	240.73	239.74	1702373.48	14272744.02	39°18'14.8594"N	80°46'51.5234"W	339.74	44.882	0.63	-0.61	-0.63	
2451.00	16.310	41.810	2400.70	-167.97	260.40	258.25	1702391.99	14272763.69	39°18'15.0534"N	80°46'51.2873"W	366.75	44.762	0.97	-0.45	-3.01	
2545.00	15.610	41.660	2491.07	-181.00	279.69	275.46	1702409.19	14272782.97	39°18'15.2436"N	80°46'51.0678"W	392.56	44.563	0.75	-0.74	-0.16	
2640.00	16.630	41.200	2582.34	-194.43	299.47	292.91	1702426.63	14272802.74	39°18'15.4386"N	80°46'50.8452"W	418.90	44.365	1.08	1.07	-0.48	
2734.00	16.710	39.240	2672.39	-208.64	320.06	310.32	1702444.03	14272823.32	39°18'15.6417"N	80°46'50.6231"W	445.79	44.115	0.60	0.09	-2.09	
2828.00	16.250	35.100	2762.53	-223.85	341.28	326.43	1702460.14	14272844.54	39°18'15.8511"N	80°46'50.4175"W	472.26	43.725	1.34	-0.49	-4.40	

RECEIVED  
Office Of Oil and Gas  
OCT 08 2024  
WV Department of  
Environmental Protection



# Actual Wellpath Report

Holtz Unit 1H AWP Proj: 16326'  
Page 3 of 10



## REFERENCE WELLPATH IDENTIFICATION

Operator	ANTERO RESOURCES CORPORATION	Well	Holtz Unit 1H
Field	Doddridge	API	47-017-06962-0000
Facility	Genevieve Pad	Wellbore	Holtz Unit 1H AWB
Slot	Slot E		

## WELLPATH DATA (181 stations)

MD [ft]	Inclination [°]	Azimuth [°]	TVD [ft]	Vert Sect [ft]	North [ft]	East [ft]	Grid East [US ft]	Grid North [US ft]	Latitude	Longitude	Closure Dist [ft]	Closure Dir [°]	DLS [°/100ft]	Build Rate [°/100ft]	Turn Rate [°/100ft]	Comments
2923.00	16.340	38.800	2853.72	-239.16	362.57	342.44	1702476.15	14272865.82	39°18'16.0612"N	80°46'50.2131"W	498.73	43.365	1.10	0.09	3.89	
3017.00	16.390	41.850	2943.91	-253.07	382.76	359.58	1702493.28	14272886.00	39°18'16.2602"N	80°46'49.9945"W	525.17	43.212	0.92	0.05	3.24	
3112.00	15.940	39.700	3035.15	-266.78	402.78	376.85	1702510.54	14272906.01	39°18'16.4577"N	80°46'49.7741"W	551.59	43.095	0.79	-0.47	-2.26	
3206.00	16.690	40.250	3125.37	-280.79	423.01	393.82	1702527.50	14272926.23	39°18'16.6573"N	80°46'49.5577"W	577.96	42.953	0.81	0.80	0.59	
3228.00	17.390	40.480	3146.40	-284.17	427.92	398.00	1702531.68	14272931.14	39°18'16.7057"N	80°46'49.5044"W	584.40	42.925	3.20	3.18	1.05	
3296.00	17.200	40.040	3211.33	-294.81	443.35	411.06	1702544.74	14272946.56	39°18'16.8579"N	80°46'49.3377"W	604.59	42.836	0.34	-0.28	-0.65	APS EM <8-3/4"> (3228')(3296'-6127')
3390.00	18.490	41.940	3300.80	-309.64	465.08	429.97	1702563.63	14272968.29	39°18'17.0722"N	80°46'49.0966"W	633.38	42.753	1.51	1.37	2.02	
3485.00	19.240	42.440	3390.70	-324.92	487.84	450.60	1702584.26	14272991.03	39°18'17.2966"N	80°46'48.8334"W	664.10	42.727	0.81	0.79	0.53	
3580.00	19.200	41.200	3480.41	-340.65	511.14	471.45	1702605.10	14273014.33	39°18'17.5265"N	80°46'48.5674"W	695.36	42.687	0.43	-0.04	-1.31	
3674.00	19.620	44.610	3569.07	-355.84	534.01	492.71	1702626.36	14273037.19	39°18'17.7520"N	80°46'48.2962"W	726.59	42.697	1.29	0.45	3.63	
3768.00	19.890	46.170	3657.53	-370.07	556.32	515.33	1702648.97	14273059.49	39°18'17.9719"N	80°46'48.0078"W	758.32	42.810	0.63	0.29	1.66	
3862.00	19.440	42.800	3746.05	-384.68	578.87	537.50	1702671.12	14273082.03	39°18'18.1943"N	80°46'47.7251"W	789.93	42.878	1.30	-0.48	-3.59	
3956.00	18.950	40.300	3834.83	-400.34	601.99	558.00	1702691.62	14273105.14	39°18'18.4223"N	80°46'47.4636"W	820.82	42.828	1.02	-0.52	-2.66	
4051.00	19.370	44.440	3924.57	-415.75	625.00	579.01	1702712.62	14273128.14	39°18'18.6492"N	80°46'47.1957"W	851.98	42.812	1.50	0.44	4.36	
4146.00	19.120	43.010	4014.26	-430.59	647.63	600.65	1702734.25	14273150.76	39°18'18.8723"N	80°46'46.9196"W	883.29	42.845	0.56	-0.26	-1.51	
4240.00	18.160	39.410	4103.33	-445.95	670.20	620.45	1702754.04	14273173.33	39°18'19.0950"N	80°46'46.6670"W	913.31	42.793	1.59	-1.02	-3.83	
4334.00	18.640	41.150	4192.53	-461.55	692.83	639.64	1702773.22	14273195.95	39°18'19.3182"N	80°46'46.4223"W	942.95	42.714	0.78	0.51	1.85	
4428.00	18.330	39.900	4281.68	-477.12	715.48	659.00	1702792.58	14273218.59	39°18'19.5416"N	80°46'46.1752"W	972.73	42.647	0.54	-0.33	-1.33	
4523.00	17.330	37.590	4372.12	-493.06	738.16	677.22	1702810.79	14273241.25	39°18'19.7652"N	80°46'45.9428"W	1001.75	42.535	1.29	-1.05	-2.43	
4617.00	17.810	39.940	4461.73	-508.61	760.27	694.99	1702828.55	14273263.36	39°18'19.9834"N	80°46'45.7160"W	1030.06	42.431	0.91	0.51	2.50	
4711.00	17.760	37.970	4551.24	-524.27	782.60	713.04	1702846.59	14273285.67	39°18'20.2036"N	80°46'45.4857"W	1058.71	42.337	0.64	-0.05	-2.10	
4806.00	17.360	42.050	4641.82	-539.47	804.54	731.44	1702864.99	14273307.61	39°18'20.4201"N	80°46'45.2509"W	1087.34	42.275	1.36	-0.42	4.29	
4900.00	16.540	43.890	4731.73	-552.78	824.60	750.11	1702883.65	14273327.66	39°18'20.6179"N	80°46'45.0128"W	1114.73	42.292	1.04	-0.87	1.96	
4994.00	17.720	42.300	4821.56	-566.18	844.82	769.02	1702902.55	14273347.88	39°18'20.8173"N	80°46'44.7716"W	1142.42	42.311	1.35	1.26	-1.69	
5088.00	19.400	41.620	4910.67	-581.17	867.08	789.02	1702922.54	14273370.12	39°18'21.0368"N	80°46'44.5166"W	1172.33	42.301	1.80	1.79	-0.72	
5182.00	18.200	38.970	4999.66	-597.08	890.16	808.62	1702942.14	14273393.20	39°18'21.2644"N	80°46'44.2665"W	1202.60	42.252	1.57	-1.28	-2.82	
5277.00	18.360	42.510	5089.86	-612.54	912.73	828.06	1702961.57	14273415.75	39°18'21.4870"N	80°46'44.0184"W	1232.38	42.215	1.18	0.17	3.73	
5371.00	19.620	45.730	5178.75	-626.83	934.66	849.36	1702982.87	14273437.68	39°18'21.7032"N	80°46'43.7467"W	1262.93	42.263	1.74	1.34	3.43	
5466.00	17.470	49.730	5268.81	-639.30	955.01	871.67	1703005.16	14273458.02	39°18'21.9039"N	80°46'43.4623"W	1293.00	42.388	2.63	-2.26	4.21	
5560.00	15.950	70.400	5358.92	-645.02	968.48	894.62	1703028.11	14273471.48	39°18'22.0364"N	80°46'43.1699"W	1318.45	42.730	6.49	-1.62	21.99	

RECEIVED  
Office Of Oil and Gas  
OCT 08 2024  
wv Department of  
Environmental Protection



# Actual Wellpath Report

Holtz Unit 1H AWP Proj: 16326'  
Page 4 of 10



REFERENCE WELLPATH IDENTIFICATION			
Operator	ANTERO RESOURCES CORPORATION	Well	Holtz Unit 1H
Field	Doddridge	API	47-017-06962-0000
Facility	Genevieve Pad	Wellbore	Holtz Unit 1H AWB
Slot	Slot E		

WELLPATH DATA (181 stations) † = interpolated, ‡ = extrapolated station																	
MD [ft]	Inclination [°]	Azimuth [°]	TVD [ft]	Vert Sect [ft]	North [ft]	East [ft]	Grid East [US ft]	Grid North [US ft]	Latitude	Longitude	Closure Dist [ft]	Closure Dir [°]	DLS ["/100ft]	Build Rate ["/100ft]	Turn Rate ["/100ft]	Comments	
5654.00	15.280	86.370	5449.49	-642.32	973.60	919.16	1703052.64	14273476.60	39°18'22.0864"N	80°46'42.8576"W	1338.94	43.353	4.61	-0.71	16.99		
5749.00	14.210	99.040	5541.39	-633.92	972.56	943.18	1703076.64	14273475.56	39°18'22.0756"N	80°46'42.5521"W	1354.79	44.121	3.57	-1.13	13.34		
5843.00	13.720	116.840	5632.65	-620.81	965.71	964.53	1703097.99	14273468.71	39°18'22.0073"N	80°46'42.2807"W	1364.88	44.965	4.58	-0.52	18.94		
5937.00	16.010	129.420	5723.52	-602.02	952.44	984.50	1703117.95	14273455.45	39°18'21.8757"N	80°46'42.0271"W	1369.81	45.948	4.20	2.44	13.38		
6032.00	18.800	135.970	5814.17	-577.23	933.11	1005.26	1703138.70	14273436.13	39°18'21.6841"N	80°46'41.7635"W	1371.58	47.132	3.58	2.94	6.89		
6127.00	23.430	138.520	5902.77	-546.14	907.94	1028.43	1703161.86	14273410.97	39°18'21.4348"N	80°46'41.4696"W	1371.86	48.561	4.97	4.87	2.68		
6164.00	25.330	139.140	5936.47	-532.10	896.44	1038.48	1703171.91	14273399.47	39°18'21.3209"N	80°46'41.3421"W	1371.87	49.198	5.18	5.14	1.68	BH AT Curve <8-1/2"> (6127')(6164'-16301')	
6255.00	27.550	148.540	6017.99	-493.68	863.75	1062.21	1703195.63	14273366.79	39°18'20.9972"N	80°46'41.0412"W	1369.07	50.883	5.20	2.44	10.33		
6349.00	30.970	153.010	6099.99	-448.63	823.63	1084.54	1703217.95	14273326.70	39°18'20.6002"N	80°46'40.7584"W	1361.84	52.786	4.32	3.64	4.76		
6444.00	35.660	156.970	6179.37	-396.87	776.34	1106.48	1703239.88	14273279.42	39°18'20.1322"N	80°46'40.4808"W	1351.67	54.945	5.44	4.94	4.17		
6465.00†	36.696	157.844	6196.32	-384.51	764.89	1111.24	1703244.64	14273267.98	39°18'20.0190"N	80°46'40.4206"W	1349.04	55.460	5.51	4.93	4.16	Sycamore: 6465' MD	
6538.00	40.340	160.580	6253.43	-339.12	722.39	1127.33	1703260.72	14273225.49	39°18'19.5985"N	80°46'40.2172"W	1338.93	57.348	5.51	4.99	3.75		
6632.00	44.370	161.170	6322.88	-275.82	662.57	1148.06	1703281.45	14273165.69	39°18'19.0067"N	80°46'39.9554"W	1325.54	60.010	4.31	4.29	0.63		
6633.00†	44.409	161.166	6323.59	-275.12	661.90	1148.29	1703281.67	14273165.03	39°18'19.0002"N	80°46'39.9525"W	1325.40	60.040	3.92	3.90	-0.41	Middlesex: 6633' MD	
6727.00	48.080	160.800	6388.59	-207.25	597.73	1170.42	1703303.79	14273100.88	39°18'18.3654"N	80°46'39.6730"W	1314.21	62.947	3.92	3.91	-0.39		
6821.00	55.640	162.800	6446.60	-133.38	527.53	1193.42	1703326.79	14273030.71	39°18'17.6710"N	80°46'39.3825"W	1304.82	66.153	8.21	8.04	2.13		
6830.00†	56.375	162.816	6451.64	-125.91	520.40	1195.63	1703328.99	14273023.58	39°18'17.6005"N	80°46'39.3547"W	1303.97	66.479	8.17	8.17	0.18	Burkett: 6830' MD	
6885.00†	60.869	162.912	6480.27	-78.98	475.54	1209.46	1703342.82	14272978.74	39°18'17.1568"N	80°46'39.1801"W	1299.59	68.536	8.17	8.17	0.17	Tully: 6885' MD	
6915.00	63.320	162.960	6494.31	-52.47	450.20	1217.24	1703350.60	14272953.41	39°18'16.9061"N	80°46'39.0820"W	1297.83	69.703	8.17	8.17	0.16		
6993.00†	69.668	162.734	6525.40	19.01	381.89	1238.33	1703371.68	14272885.13	39°18'16.2304"N	80°46'38.8159"W	1295.88	72.861	8.14	8.14	-0.29	Marcellus POE: 6993' MD	
7009.00	70.970	162.690	6530.79	34.08	367.50	1242.80	1703376.15	14272870.75	39°18'16.0882"N	80°46'38.7594"W	1296.00	73.527	8.14	8.14	-0.27		
7104.00	78.570	162.860	6555.73	125.67	280.02	1269.93	1703403.26	14272783.29	39°18'15.2228"N	80°46'38.4171"W	1300.43	77.565	8.00	8.00	0.18		
7198.00	86.090	162.820	6568.26	218.75	191.07	1297.39	1703430.72	14272694.38	39°18'14.3430"N	80°46'38.0705"W	1311.39	81.622	8.00	8.00	-0.04		
7293.00	90.400	161.440	6571.17	313.68	100.72	1326.52	1703459.84	14272604.07	39°18'13.4493"N	80°46'37.7027"W	1330.34	85.658	4.76	4.54	-1.45		
7387.00	90.950	162.290	6570.06	407.67	11.39	1355.78	1703489.08	14272514.78	39°18'12.5657"N	80°46'37.3334"W	1355.83	89.519	1.08	0.59	0.90		
7482.00	91.790	163.090	6567.79	502.64	-79.28	1384.04	1703517.33	14272424.15	39°18'11.6689"N	80°46'36.9767"W	1386.31	93.278	1.22	0.88	0.84		
7576.00	90.620	162.260	6565.82	596.61	-168.99	1412.02	1703545.30	14272334.47	39°18'10.7815"N	80°46'36.6235"W	1422.10	96.825	1.53	-1.24	-0.88		
7671.00	91.230	161.400	6564.28	691.59	-259.24	1441.64	1703574.91	14272244.25	39°18'9.8888"N	80°46'36.2496"W	1464.77	100.194	1.11	0.64	-0.91		
7765.00	91.200	162.050	6562.29	785.57	-348.48	1471.11	1703604.37	14272155.05	39°18'9.0061"N	80°46'35.8775"W	1511.82	103.327	0.69	-0.03	0.69		
7859.00	90.890	162.150	6560.58	879.55	-437.91	1500.00	1703633.24	14272065.65	39°18'8.1214"N	80°46'35.5129"W	1562.62	106.275	0.35	-0.33	0.11		

RECEIVED  
 Office Of Oil and Gas  
 OCT 08 2024  
 WV Department of  
 Environmental Protection



# Actual Wellpath Report

Holtz Unit 1H AWP Proj: 16326'  
Page 5 of 10



### REFERENCE WELLPATH IDENTIFICATION

Operator	ANTERO RESOURCES CORPORATION	Well	Holtz Unit 1H
Field	Doddridge	API	47-017-06962-0000
Facility	Genevieve Pad	Wellbore	Holtz Unit 1H AWB
Slot	Slot E		

### WELLPATH DATA (181 stations)

MD [ft]	Inclination [°]	Azimuth [°]	TVD [ft]	Vert Sect [ft]	North [ft]	East [ft]	Grid East [US ft]	Grid North [US ft]	Latitude	Longitude	Closure Dist [ft]	Closure Dir [°]	DLS [°/100ft]	Build Rate [°/100ft]	Turn Rate [°/100ft]	Comments
7953.00	91.140	162.220	6558.91	973.54	-527.39	1528.75	1703661.99	14271976.21	39°18'7.2363"N	80°46'35.1499"W	1617.17	109.033	0.28	0.27	0.07	
8048.00	90.150	160.360	6557.84	1068.52	-617.36	1559.22	1703692.44	14271886.28	39°18'6.3464"N	80°46'34.7651"W	1677.00	111.601	2.22	-1.04	-1.96	
8142.00	91.420	160.830	6556.55	1162.48	-706.01	1590.45	1703723.66	14271797.66	39°18'5.4694"N	80°46'34.3707"W	1740.11	113.937	1.44	1.35	0.50	
8236.00	91.480	161.880	6554.17	1256.44	-795.05	1620.49	1703753.69	14271708.66	39°18'4.5887"N	80°46'33.9913"W	1805.02	116.133	1.12	0.06	1.12	
8330.00	90.620	162.340	6552.45	1350.42	-884.49	1649.36	1703782.55	14271619.26	39°18'3.7040"N	80°46'33.6269"W	1871.55	118.203	1.04	-0.91	0.49	
8424.00	89.780	160.050	6552.12	1444.41	-973.46	1679.66	1703812.84	14271530.32	39°18'2.8238"N	80°46'32.2443"W	1941.36	120.095	2.59	-0.89	-2.44	
8518.00	91.420	161.130	6551.14	1538.37	-1062.11	1710.90	1703844.06	14271441.70	39°18'1.9469"N	80°46'32.8498"W	2013.76	121.832	2.09	1.74	1.15	
8613.00	90.030	162.740	6549.94	1633.36	-1152.41	1740.35	1703873.50	14271351.44	39°18'1.0536"N	80°46'32.4779"W	2087.32	123.511	2.24	-1.46	1.69	
8707.00	89.820	156.650	6550.06	1727.23	-1240.53	1772.96	1703906.09	14271263.35	39°18'0.1819"N	80°46'32.0660"W	2163.86	124.980	6.48	-0.22	-6.48	
8801.00	89.750	161.570	6550.41	1821.08	-1328.32	1806.47	1703939.59	14271175.59	39°17'59.3134"N	80°46'31.6425"W	2242.27	126.328	5.23	-0.07	5.23	
8895.00	90.120	160.930	6550.52	1915.07	-1417.33	1836.68	1703969.79	14271086.62	39°17'58.4329"N	80°46'31.2610"W	2319.96	127.657	0.79	0.39	-0.68	
8989.00	91.660	161.570	6549.06	2009.05	-1506.33	1866.89	1703999.99	14270997.66	39°17'57.5525"N	80°46'30.8795"W	2398.82	128.899	1.77	1.64	0.68	
9083.00	89.260	158.780	6548.30	2102.98	-1594.74	1898.76	1704031.85	14270909.28	39°17'56.6779"N	80°46'30.4769"W	2479.62	130.026	3.91	-2.55	-2.97	
9177.00	90.680	161.560	6548.35	2196.92	-1683.16	1930.65	1704063.72	14270820.90	39°17'55.8033"N	80°46'30.0741"W	2561.33	131.082	3.32	1.51	2.96	
9272.00	91.050	161.030	6546.92	2291.90	-1773.13	1961.11	1704094.17	14270730.97	39°17'54.9133"N	80°46'29.6894"W	2643.85	132.118	0.68	0.39	-0.56	
9365.00	90.310	162.080	6545.82	2384.89	-1861.34	1990.53	1704123.58	14270642.79	39°17'54.0407"N	80°46'29.3180"W	2725.22	133.079	1.38	-0.80	1.13	
9459.00	90.120	161.720	6545.46	2478.89	-1950.69	2019.74	1704152.77	14270553.47	39°17'53.1569"N	80°46'28.9494"W	2807.94	134.004	0.43	-0.20	-0.38	
9554.00	90.920	161.800	6544.60	2573.88	-2040.91	2049.47	1704182.49	14270463.29	39°17'52.2644"N	80°46'28.5740"W	2892.34	134.880	0.85	0.84	0.08	
9648.00	90.620	164.250	6543.34	2667.85	-2130.80	2076.91	1704209.92	14270373.43	39°17'51.3753"N	80°46'28.2278"W	2975.55	135.734	2.63	-0.32	2.61	
9742.00	89.450	157.560	6543.28	2761.78	-2219.58	2107.64	1704240.64	14270284.69	39°17'50.4971"N	80°46'27.8397"W	3060.83	136.482	7.22	-1.24	-7.12	
9836.00	90.000	163.600	6543.73	2855.71	-2308.19	2138.88	1704271.87	14270196.12	39°17'49.6205"N	80°46'27.4452"W	3146.83	137.180	6.45	0.59	6.43	
9931.00	89.510	162.820	6544.14	2950.68	-2399.14	2166.32	1704299.30	14270105.21	39°17'48.7210"N	80°46'27.0990"W	3232.46	137.919	0.97	-0.52	-0.82	
10025.00	89.260	162.130	6545.15	3044.68	-2488.77	2194.63	1704327.59	14270015.61	39°17'47.8344"N	80°46'26.7419"W	3318.18	138.594	0.78	-0.27	-0.73	
10119.00	89.450	162.420	6546.21	3138.67	-2578.30	2223.24	1704356.20	14269926.11	39°17'46.9488"N	80°46'26.3807"W	3404.47	139.229	0.37	0.20	0.31	
10213.00	89.910	161.900	6546.73	3232.67	-2667.78	2252.04	1704384.98	14269836.67	39°17'46.0637"N	80°46'26.0173"W	3491.23	139.830	0.74	0.49	-0.55	
10307.00	91.050	163.100	6545.94	3326.66	-2757.42	2280.30	1704413.24	14269747.06	39°17'45.1770"N	80°46'25.6606"W	3578.15	140.410	1.76	1.21	1.28	
10401.00	89.450	162.850	6545.53	3420.64	-2847.30	2307.82	1704440.75	14269657.22	39°17'44.2880"N	80°46'25.3134"W	3665.13	140.974	1.72	-1.70	-0.27	
10495.00	89.260	161.860	6546.59	3514.63	-2936.87	2336.32	1704469.23	14269567.69	39°17'43.4020"N	80°46'24.9539"W	3752.81	141.497	1.07	-0.20	-1.05	
10589.00	89.600	161.640	6547.53	3608.62	-3026.14	2365.75	1704498.65	14269478.46	39°17'42.5190"N	80°46'24.5823"W	3841.13	141.983	0.43	0.36	-0.23	
10683.00	90.650	162.720	6547.32	3702.62	-3115.62	2394.52	1704527.40	14269389.01	39°17'41.6338"N	80°46'24.2193"W	3929.48	142.456	1.60	1.12	1.15	

RECEIVED  
Office Of Oil and Gas  
OCT 08 2024  
WV Department of  
Environmental Protection



# Actual Wellpath Report

Holtz Unit 1H AWP Proj: 16326'  
Page 6 of 10



REFERENCE WELLPATH IDENTIFICATION			
Operator	ANTERO RESOURCES CORPORATION	Well	Holtz Unit 1H
Field	Doddridge	API	47-017-06962-0000
Facility	Genevieve Pad	Wellbore	Holtz Unit 1H AWB
Slot	Slot E		

WELLPATH DATA (181 stations)																
MD [ft]	Inclination [°]	Azimuth [°]	TVD [ft]	Vert Sect [ft]	North [ft]	East [ft]	Grid East [US ft]	Grid North [US ft]	Latitude	Longitude	Closure Dist [ft]	Closure Dir [°]	DLS [°/100ft]	Build Rate [°/100ft]	Turn Rate [°/100ft]	Comments
10778.00	89.600	162.290	6547.11	3797.62	-3206.23	2423.08	1704555.95	14269298.44	39°17'40.7376"N	80°46'23.8589"W	4018.85	142.920	1.19	-1.11	-0.45	
10872.00	89.600	163.170	6547.77	3891.61	-3295.99	2450.98	1704583.85	14269208.71	39°17'39.8497"N	80°46'23.5068"W	4107.41	143.365	0.94	0.00	0.94	
10966.00	89.450	161.460	6548.55	3985.60	-3385.54	2479.53	1704612.39	14269119.20	39°17'38.9639"N	80°46'23.1465"W	4196.42	143.781	1.83	-0.16	-1.82	
11061.00	90.340	162.040	6548.72	4080.60	-3475.76	2509.28	1704642.13	14269029.01	39°17'38.0715"N	80°46'22.7710"W	4286.89	144.173	1.12	0.94	0.61	
11155.00	90.220	162.260	6548.26	4174.59	-3565.23	2538.10	1704670.93	14268939.58	39°17'37.1865"N	80°46'22.4074"W	4376.39	144.553	0.27	-0.13	0.23	
11250.00	89.540	161.970	6548.46	4269.59	-3655.64	2567.27	1704700.09	14268849.20	39°17'36.2922"N	80°46'22.0392"W	4467.06	144.921	0.78	-0.72	-0.31	
11344.00	90.060	163.220	6548.79	4363.59	-3745.33	2595.39	1704728.20	14268759.55	39°17'35.4050"N	80°46'21.6844"W	4556.71	145.279	1.44	0.55	1.33	
11438.00	90.220	162.490	6548.56	4457.57	-3835.16	2623.10	1704755.90	14268669.76	39°17'34.5165"N	80°46'21.3348"W	4646.40	145.629	0.80	0.17	-0.78	
11533.00	90.650	161.340	6547.84	4552.57	-3925.46	2652.59	1704785.37	14268579.49	39°17'33.6233"N	80°46'20.9627"W	4737.66	145.952	1.29	0.45	-1.21	
11627.00	90.400	163.550	6546.98	4646.56	-4015.07	2680.94	1704813.71	14268489.92	39°17'32.7368"N	80°46'20.6049"W	4827.86	146.268	2.37	-0.27	2.35	
11721.00	89.020	158.000	6547.45	4740.49	-4103.79	2711.88	1704844.64	14268401.23	39°17'31.8592"N	80°46'20.2143"W	4918.88	146.542	6.08	-1.47	-5.90	
11816.00	91.020	164.460	6547.42	4835.43	-4193.69	2742.43	1704875.18	14268311.37	39°17'30.9699"N	80°46'19.8286"W	5010.78	146.818	7.12	2.11	6.80	
11910.00	89.420	162.180	6547.06	4929.40	-4283.72	2769.40	1704902.14	14268221.37	39°17'30.0794"N	80°46'19.4883"W	5100.97	147.118	2.96	-1.70	-2.43	
12004.00	90.460	159.900	6547.16	5023.38	-4372.61	2799.94	1704932.67	14268132.51	39°17'29.2000"N	80°46'19.1028"W	5192.25	147.367	2.67	1.11	-2.43	
12098.00	90.400	164.380	6546.45	5117.35	-4462.06	2828.76	1704961.48	14268043.11	39°17'28.3153"N	80°46'18.7391"W	5283.17	147.627	4.77	-0.06	4.77	
12192.00	89.600	160.950	6546.45	5211.33	-4551.78	2856.77	1704989.47	14267953.42	39°17'27.4278"N	80°46'18.3858"W	5373.99	147.887	3.75	-0.85	-3.65	
12287.00	91.140	162.550	6545.84	5306.32	-4641.99	2886.52	1705019.21	14267863.25	39°17'26.5355"N	80°46'18.0103"W	5466.26	148.126	2.34	1.62	1.68	
12381.00	90.710	163.410	6544.32	5400.29	-4731.86	2914.03	1705046.71	14267773.41	39°17'25.6465"N	80°46'17.6633"W	5557.16	148.374	1.02	-0.46	0.91	
12475.00	89.600	160.110	6544.07	5494.28	-4821.12	2943.44	1705076.11	14267684.19	39°17'24.7635"N	80°46'17.2920"W	5648.64	148.595	3.70	-1.18	-3.51	
12570.00	90.990	161.900	6543.58	5589.25	-4910.94	2974.36	1705107.02	14267594.40	39°17'23.8750"N	80°46'16.9017"W	5741.44	148.798	2.39	1.46	1.88	
12664.00	89.970	161.990	6542.79	5683.25	-5000.31	3003.49	1705136.14	14267505.07	39°17'22.9910"N	80°46'16.5340"W	5833.02	149.008	1.09	-1.09	0.10	
12758.00	89.820	161.570	6542.96	5777.25	-5089.60	3032.89	1705165.52	14267415.82	39°17'22.1078"N	80°46'16.1631"W	5924.73	149.209	0.47	-0.16	-0.45	
12853.00	91.200	162.600	6542.12	5872.24	-5179.98	3062.11	1705194.73	14267325.47	39°17'21.2137"N	80°46'15.7944"W	6017.37	149.411	1.81	1.45	1.08	
12947.00	88.920	162.790	6542.02	5966.23	-5269.72	3090.06	1705222.68	14267235.76	39°17'20.3261"N	80°46'15.4417"W	6108.88	149.613	2.43	-2.43	0.20	
13042.00	91.020	159.330	6542.07	6061.19	-5359.56	3120.89	1705253.49	14267145.96	39°17'19.4374"N	80°46'15.0525"W	6202.00	149.788	4.26	2.21	-3.64	
13136.00	89.420	160.420	6541.71	6155.12	-5447.82	3153.23	1705285.82	14267057.74	39°17'18.5643"N	80°46'14.6440"W	6294.57	149.937	2.06	-1.70	1.16	
13230.00	90.490	161.470	6541.78	6249.10	-5536.66	3183.92	1705316.50	14266968.93	39°17'17.6854"N	80°46'14.2566"W	6386.86	150.098	1.59	1.14	1.12	
13325.00	90.400	163.550	6541.04	6344.09	-5627.26	3212.47	1705345.03	14266878.37	39°17'16.7892"N	80°46'13.8964"W	6479.66	150.279	2.19	-0.09	2.19	
13419.00	90.150	163.270	6540.59	6438.06	-5717.35	3239.31	1705371.86	14266788.32	39°17'15.8981"N	80°46'13.5580"W	6571.24	150.465	0.40	-0.27	-0.30	
13513.00	89.880	163.160	6540.57	6532.04	-5807.34	3266.45	1705399.00	14266698.36	39°17'15.0080"N	80°46'13.2156"W	6662.95	150.644	0.31	-0.29	-0.12	

RECEIVED  
Office Of Oil and Gas  
OCT 08 2024  
WV Department of  
Environmental Protection



# Actual Wellpath Report

Holtz Unit 1H AWP Proj: 16326'  
Page 7 of 10



REFERENCE WELLPATH IDENTIFICATION			
Operator	ANTERO RESOURCES CORPORATION	Well	Holtz Unit 1H
Field	Doddridge	API	47-017-06962-0000
Facility	Genevieve Pad	Wellbore	Holtz Unit 1H AWB
Slot	Slot E		

WELLPATH DATA (181 stations)																
MD [ft]	Inclination [°]	Azimuth [°]	TVD [ft]	Vert Sect [ft]	North [ft]	East [ft]	Grid East [US ft]	Grid North [US ft]	Latitude	Longitude	Closure Dist [ft]	Closure Dir [°]	DLS ["/100ft]	Build Rate ["/100ft]	Turn Rate ["/100ft]	Comments
13607.00	90.120	163.130	6540.57	6626.03	-5897.31	3293.71	1705426.24	14266608.43	39°17'14.1181"N	80°46'12.8719"W	6754.76	150.816	0.26	0.26	-0.03	
13701.00	90.150	163.560	6540.35	6720.00	-5987.36	3320.65	1705453.17	14266518.41	39°17'13.2274"N	80°46'12.5322"W	6846.55	150.987	0.46	0.03	0.46	
13796.00	90.980	163.670	6539.41	6814.96	-6078.50	3347.45	1705479.96	14266427.31	39°17'12.3259"N	80°46'12.1943"W	6939.28	151.158	0.88	0.87	0.12	
13891.00	90.400	163.580	6538.27	6909.91	-6169.64	3374.23	1705506.73	14266336.21	39°17'11.4244"N	80°46'11.8567"W	7032.06	151.325	0.62	-0.61	-0.09	
13985.00	90.400	164.290	6537.61	7003.86	-6259.96	3400.24	1705532.73	14266245.92	39°17'10.5310"N	80°46'11.5288"W	7123.82	151.490	0.76	0.00	0.76	
14080.00	90.400	164.340	6536.95	7098.78	-6351.42	3425.92	1705558.40	14266154.49	39°17'9.6264"N	80°46'11.2051"W	7216.48	151.658	0.05	0.00	0.05	
14174.00	89.780	163.670	6536.80	7192.72	-6441.78	3451.82	1705584.29	14266064.17	39°17'8.7327"N	80°46'10.8786"W	7308.33	151.815	0.97	-0.66	-0.71	
14269.00	89.140	162.140	6537.69	7287.70	-6532.58	3479.75	1705612.20	14265973.41	39°17'7.8346"N	80°46'10.5265"W	7401.57	151.957	1.75	-0.67	-1.61	
14363.00	92.180	162.510	6536.61	7381.68	-6622.13	3508.28	1705640.73	14265883.90	39°17'6.9488"N	80°46'10.1665"W	7494.04	152.086	3.26	3.23	0.39	
14458.00	89.820	159.660	6534.95	7476.64	-6711.97	3539.07	1705671.50	14265794.09	39°17'6.0601"N	80°46'9.7778"W	7587.85	152.198	3.89	-2.48	-3.00	
14552.00	89.320	164.480	6535.66	7570.61	-6801.37	3568.00	1705700.42	14265704.72	39°17'5.1757"N	80°46'9.4128"W	7680.45	152.319	5.16	-0.53	5.13	
14646.00	90.090	163.800	6536.14	7664.54	-6891.79	3593.69	1705726.10	14265614.34	39°17'4.2814"N	80°46'9.0891"W	7772.47	152.460	1.09	0.82	-0.72	
14741.00	90.400	163.840	6535.74	7759.49	-6983.03	3620.16	1705752.56	14265523.14	39°17'3.3790"N	80°46'8.7554"W	7865.64	152.597	0.33	0.33	0.04	
14835.00	90.430	163.360	6535.06	7853.46	-7073.20	3646.70	1705779.09	14265433.00	39°17'2.4871"N	80°46'8.4208"W	7957.92	152.726	0.51	0.03	-0.51	
14930.00	90.310	163.580	6534.44	7948.42	-7164.27	3673.73	1705806.11	14265341.97	39°17'1.5862"N	80°46'8.0800"W	8051.28	152.852	0.26	-0.13	0.23	
15024.00	90.180	163.470	6534.04	8042.39	-7254.41	3700.38	1705832.75	14265251.86	39°17'0.6947"N	80°46'7.7439"W	8143.67	152.974	0.18	-0.14	-0.12	
15119.00	90.400	163.860	6533.56	8137.35	-7345.58	3727.10	1705859.46	14265160.74	39°16'59.7929"N	80°46'7.4071"W	8237.04	153.097	0.47	0.23	0.41	
15214.00	90.460	163.770	6532.85	8232.30	-7436.81	3753.58	1705885.93	14265069.54	39°16'58.8906"N	80°46'7.0733"W	8330.40	153.219	0.11	0.06	-0.09	
15308.00	90.580	163.800	6531.99	8326.25	-7527.06	3779.83	1705912.17	14264979.32	39°16'57.9978"N	80°46'6.7424"W	8422.82	153.336	0.13	0.13	0.03	
15402.00	90.980	161.870	6530.71	8420.23	-7616.86	3807.57	1705939.89	14264889.55	39°16'57.1096"N	80°46'6.3926"W	8515.53	153.440	2.10	0.43	-2.05	
15497.00	90.800	161.340	6529.24	8515.21	-7707.00	3837.54	1705969.86	14264799.46	39°16'56.2179"N	80°46'6.0144"W	8609.56	153.530	0.59	-0.19	-0.56	
15591.00	90.340	161.230	6528.30	8609.20	-7796.02	3867.70	1706000.00	14264710.47	39°16'55.3373"N	80°46'5.6337"W	8702.71	153.613	0.50	-0.49	-0.12	
15685.00	90.120	161.360	6527.93	8703.19	-7885.06	3897.85	1706030.14	14264621.47	39°16'54.4565"N	80°46'5.2533"W	8795.87	153.695	0.27	-0.23	0.14	
15780.00	90.340	161.610	6527.54	8798.19	-7975.14	3928.02	1706060.29	14264531.42	39°16'53.5654"N	80°46'4.8726"W	8890.00	153.778	0.35	0.23	0.26	
15874.00	90.280	161.820	6527.04	8892.19	-8064.39	3957.51	1706089.77	14264442.20	39°16'52.6825"N	80°46'4.5004"W	8983.11	153.861	0.23	-0.06	0.22	
15968.00	90.310	161.450	6526.55	8986.18	-8153.60	3987.12	1706119.38	14264353.03	39°16'51.8000"N	80°46'4.1267"W	9076.26	153.941	0.39	0.03	-0.39	
16063.00	90.520	161.520	6525.86	9081.18	-8243.68	4017.29	1706149.53	14264262.98	39°16'50.9090"N	80°46'3.7460"W	9170.44	154.019	0.23	0.22	0.07	
16157.00	90.520	161.650	6525.01	9175.17	-8332.87	4046.98	1706179.21	14264173.84	39°16'50.0267"N	80°46'3.3713"W	9263.63	154.096	0.14	0.00	0.14	
16251.00	90.280	161.650	6524.35	9269.16	-8422.09	4076.57	1706208.79	14264084.65	39°16'49.1442"N	80°46'2.9979"W	9356.82	154.171	0.26	-0.26	0.00	
16301.00	90.400	161.520	6524.06	9319.16	-8469.52	4092.37	1706224.58	14264037.23	39°16'48.6749"N	80°46'2.7986"W	9406.40	154.211	0.35	0.24	-0.26	

RECEIVED  
Office Of Oil and Gas

OCT 08 2024

WV Department of  
Environmental Protection





# Actual Wellpath Report

Holtz Unit 1H AWP Proj: 16326'  
Page 8 of 10



REFERENCE WELLPATH IDENTIFICATION			
Operator	ANTERO RESOURCES CORPORATION	Well	Holtz Unit 1H
Field	Doddridge	API	47-017-06962-0000
Facility	Genevieve Pad	Wellbore	Holtz Unit 1H AWB
Slot	Slot E		

WELLPATH DATA (181 stations) † = interpolated, ‡ = extrapolated station																
MD [ft]	Inclination [°]	Azimuth [°]	TVD [ft]	Vert Sect [ft]	North [ft]	East [ft]	Grid East [US ft]	Grid North [US ft]	Latitude	Longitude	Closure Dist [ft]	Closure Dir [°]	DLS [°/100ft]	Build Rate [°/100ft]	Turn Rate [°/100ft]	Comments
16326.00†	90.400	161.520	6523.88	9344.16	-8493.23	4100.29	1706232.50	14264013.53	39°16'48.4404"N	80°46'2.6986"W	9431.20	154.230	0.00	0.00	0.00	Projected MD at TD: 16326'

HOLE & CASING SECTIONS - Ref Wellbore: Holtz Unit 1H AWB Ref Wellpath: Holtz Unit 1H AWP Proj: 16326'									
String/Diameter	Start MD [ft]	End MD [ft]	Interval [ft]	Start TVD [ft]	End TVD [ft]	Start N/S [ft]	Start E/W [ft]	End N/S [ft]	End E/W [ft]
20in Conductor	30.00	130.00	100.00	30.00	130.00	0.00	0.00	-0.02	0.31
17.5in Open Hole	130.00	625.00	495.00	130.00	624.97	-0.02	0.31	-1.47	5.77
13.375in Casing Surface	30.00	605.00	575.00	30.00	604.97	0.00	0.00	-1.48	5.52
12.375in Open Hole	625.00	3306.00	2681.00	624.97	3220.88	-1.47	5.77	445.62	412.98
9.625in Casing Intermediate	30.00	3276.00	3246.00	30.00	3192.23	0.00	0.00	438.82	407.25
8.75in Open Hole	3306.00	6204.00	2898.00	3220.88	5972.50	445.62	412.98	882.86	1049.34
8.5in Open Hole	6204.00	16326.00	10122.00	5972.50	6523.88	882.86	1049.34	-8493.23	4100.29
5.5in Casing Production	30.00	16306.00	16276.00	30.00	6524.02	0.00	0.00	-8474.27	4093.95

RECEIVED  
 Office Of Oil and Gas  
 OCT 08 2024  
 WV Department of  
 Environmental Protection



# Actual Wellpath Report

Holtz Unit 1H AWP Proj: 16326'  
Page 9 of 10



REFERENCE WELLPATH IDENTIFICATION			
Operator	ANTERO RESOURCES CORPORATION	Well	Holtz Unit 1H
Field	Doddridge	API	47-017-06962-0000
Facility	Genevieve Pad	Wellbore	Holtz Unit 1H AWB
Slot	Slot E		

TARGETS								
Name	TVD [ft]	North [ft]	East [ft]	Grid East [US ft]	Grid North [US ft]	Latitude	Longitude	Shape
Holtz Unit 1H BHL Rev-3	6508.50	-8507.70	4121.62	1706253.82	14263999.07	39°16'48.2968"N	80°46'2.4279"W	point
Holtz Unit 1H POE Rev-3	6528.00	383.15	1236.81	1703370.16	14272886.39	39°18'16.2430"N	80°46'38.8351"W	point
Holtz Unit 1H POE Rev-1	6536.00	524.15	1191.06	1703324.43	14273027.33	39°18'17.6376"N	80°46'39.4127"W	point
Holtz Unit 1H LP Rev-3	6572.00	143.26	1314.65	1703447.97	14272646.59	39°18'13.8700"N	80°46'37.8524"W	point
Holtz Unit 1H 50' L/R Hard Line	6750.00	-3991.78	2656.34	1704789.13	14268513.20	39°17'32.9677"N	80°46'20.9170"W	rectangle
2D Rectangle 9495.4 x 100.								

WELLPATH COMPOSITION - Ref Wellbore: Holtz Unit 1H AWB    Ref Wellpath: Holtz Unit 1H AWP Proj: 16326'					
Start MD [ft]	End MD [ft]	Positional Uncertainty Model	Log Name/Comment	Wellbore	Survey Date
30.00	554.00	Gyrodata 2015 - GC+WIR+DPIPE	01 Gyrodata MS Gyro <17-1/2"> (100'-554')	Holtz Unit 1H AWB	3/3/2024
554.00	3228.00	BH NaviTrak (2019) (Axial Corr+HRGM)	02 APS EM <12-3/8"> (554')(765'-3228')	Holtz Unit 1H AWB	3/3/2024
3228.00	6127.00	BH NaviTrak (2019) (Axial Corr+HRGM)	03 APS EM <8-3/4"> (3228')(3296'-6127')	Holtz Unit 1H AWB	3/13/2024
6127.00	16326.00	BH AutoTrak Curve/eXpress (2019) (HRGM, Short spacing)	04 BH AT Curve <8-1/2"> (6127')(6164'-16301')	Holtz Unit 1H AWB	3/13/2024

RECEIVED  
 Office Of Oil and Gas  
 OCT 08 2024  
 WV Department of  
 Environmental Protection



# Actual Wellpath Report

Holtz Unit 1H AWP Proj: 16326'

Page 10 of 10



## REFERENCE WELLPATH IDENTIFICATION

Operator	ANTERO RESOURCES CORPORATION	Well	Holtz Unit 1H
Field	Doddridge	API	47-017-06962-0000
Facility	Genevieve Pad	Wellbore	Holtz Unit 1H AWB
Slot	Slot E		

## COMMENTS

### Wellpath general comments

API: 47-017-06962-0000  
BH Job #: 112150810  
Rig: H&P 519  
Duration: 3/15/2024-3/18/2024  
Gyrodatta MS Gyro <17-1/2"> (100'-554')  
APS EM <12-3/8"> (554')(765'-3228')  
APS EM <8-3/4"> (3228')(3296'-6127')  
BH AT Curve <8-1/2"> (6127')(6164'-16301')  
Sycamore: 6465' MD  
Middlesex: 6633' MD  
Burkett: 6830' MD  
Tully: 6885' MD  
Marcellus POE: 6993' MD  
Projected MD at TD: 16326'

RECEIVED  
Office Of Oil and Gas  
OCT 08 2024  
WV Department of  
Environmental Protection