



---

west virginia department of environmental protection

---

Office of Oil and Gas  
601 57<sup>th</sup> Street, S.E.  
Charleston, WV 25304  
(304) 926-0450  
fax: (304) 926-0452

Harold D. Ward, Cabinet Secretary  
[www.dep.wv.gov](http://www.dep.wv.gov)

Wednesday, November 5, 2025  
PERMIT MODIFICATION APPROVAL  
Horizontal 6A / New Drill

ANTERO RESOURCES CORPORATION  
1615 WYNKOOP STREET

DENVER, CO 80202

Re: Permit Modification Approval for Wysong Unit 1H  
47-017-06994-00-00

Extended lateral

ANTERO RESOURCES CORPORATION

The Office of Oil and Gas has reviewed the attached permit modification for the above referenced permit. The attached modification has been approved and well work may begin. Please be reminded that the oil and gas inspector is to be notified twenty-four (24) hours before permitted well work is commenced.

If there are any questions, please feel free to contact me at (304) 926- 0450.

A handwritten signature in black ink, reading "H. Jason Harmon".

H. Jason Harmon  
Acting Chief

Operator's Well Number: Wysong Unit 1H  
Farm Name: Sandra E Erwin  
U.S. WELL NUMBER: 47-017-06994-00-00  
Horizontal 6A New Drill  
Date Modification Issued: 11/5/2025

Promoting a healthy environment.

11/07/2025

WW-6B  
(04/15)

API NO. 47- 017 - 06994  
OPERATOR WELL NO. Wysong Unit 1H MOD  
Well Pad Name: Brushy Pad

STATE OF WEST VIRGINIA  
DEPARTMENT OF ENVIRONMENTAL PROTECTION, OFFICE OF OIL AND GAS  
WELL WORK PERMIT APPLICATION

- 1) Well Operator: Antero Resources Corporat 494507062 017-Doddrid New Milt New Milton  
Operator ID County District Quadrangle
- 2) Operator's Well Number: Wysong Unit 1H MOD Well Pad Name: Brushy Pad
- 3) Farm Name/Surface Owner: Sandra E. Erwin Public Road Access: Toms Fork
- 4) Elevation, current ground: 1213' Elevation, proposed post-construction: \_\_\_\_\_
- 5) Well Type (a) Gas ☒ Oil \_\_\_\_\_ Underground Storage \_\_\_\_\_  
Other \_\_\_\_\_  
(b) If Gas Shallow ☒ Deep \_\_\_\_\_  
Horizontal ☒
- 6) Existing Pad: Yes or No No
- 7) Proposed Target Formation(s), Depth(s), Anticipated Thickness and Expected Pressure(s):  
Marcellus Shale: 7700' TVD, Anticipated Thickness- 55 feet, Associated Pressure- 2850#
- 8) Proposed Total Vertical Depth: 7700' TVD
- 9) Formation at Total Vertical Depth: Marcellus
- 10) Proposed Total Measured Depth: 22700' MD
- 11) Proposed Horizontal Leg Length: 11359.4'
- 12) Approximate Fresh Water Strata Depths: 702'
- 13) Method to Determine Fresh Water Depths: 47-017-01341
- 14) Approximate Saltwater Depths: 2307'
- 15) Approximate Coal Seam Depths: N/A
- 16) Approximate Depth to Possible Void (coal mine, karst, other): None Anticipated
- 17) Does Proposed well location contain coal seams directly overlying or adjacent to an active mine? Yes \_\_\_\_\_ No ☒
- (a) If Yes, provide Mine Info: Name: \_\_\_\_\_  
Depth: \_\_\_\_\_  
Seam: \_\_\_\_\_  
Owner: \_\_\_\_\_

WW-6B  
(04/15)

API NO. 47- 017 - 06994  
OPERATOR WELL NO. Wysong Unit 1H MOD  
Well Pad Name: Brushy Pad

18)

**CASING AND TUBING PROGRAM**

TYPE	Size (in)	New or Used	Grade	Weight per ft. (lb/ft)	FOOTAGE: For Drilling (ft)	INTERVALS: Left in Well (ft)	CEMENT: Fill-up (Cu. Ft.)/CTS
Conductor	20"	New	H-40	94#	100'	100'	CTS, 96 Cu. Ft.
Fresh Water	13-3/8"	New	J-55	54.5#	752'	752'	CTS, 731 Cu. Ft.
Coal	9-5/8"	New	J-55	36#	1117'	1117'	CTS, 455 Cu. Ft.
Intermediate							
Production	5-1/2"	New	P-110	23#	22700'	22700'	4792 Cu. Ft
Tubing	2-3/8"	New	N-80	4.7#			
Liners							

TYPE	Size (in)	Wellbore Diameter (in)	Wall Thickness (in)	Burst Pressure (psi)	Anticipated Max. Internal Pressure (psi)	Cement Type	Cement Yield (cu. ft./k)
Conductor	20"	24"	0.438"	1530	50	Class A/L	~1.18
Fresh Water	13-3/8"	17-1/2"	0.38"	2730	1000	Class A/L	~1.18
Coal	9-5/8"	12-1/4"	0.352"	3520	1500	Class A/L	~1.18
Intermediate							
Production	5-1/2"	8-3/4" & 8-1/2"	0.415"	12,630	2500	Lead-H/POZ & Tail - H	H/POZ-1.44 & H-1.8
Tubing	2-3/8"	4.778"	0.19"	11,200			
Liners							

RECEIVED  
Office of Oil and Gas

OCT 16 2025

**PACKERS**

WV Department of  
Environmental Protection

Kind:	N/A			
Sizes:	N/A			
Depths Set:	N/A			



19) Describe proposed well work, including the drilling and plugging back of any pilot hole:

Drill, perforate, fracture a new shallow well and complete Marcellus Shale.

RECEIVED  
Office of Oil and Gas

OCT 16 2025

WV Department of  
Environmental Protection

20) Describe fracturing/stimulating methods in detail, including anticipated max pressure and max rate:

Antero plans to pump Slickwater into the Marcellus Shale formation in order to ready the well for production. The fluid will be comprised of approximately 99 percent water and sand, with less than 1 percent special-purpose additives as shown in the attached "List of Anticipated Additives Used for Fracturing or Stimulating Well."

Anticipated Max Pressure - 9300 lbs

Anticipated Max Rate - 80 bpm

21) Total Area to be disturbed, including roads, stockpile area, pits, etc., (acres): 37.49 acres

22) Area to be disturbed for well pad only, less access road (acres): 6.90 acres

23) Describe centralizer placement for each casing string:

Conductor: no centralizers

Surface Casing: one centralizer 10' above the float shoe, one on the insert float collar and one every 4th joint spaced up the hole to surface.

Intermediate Casing: one centralizer above float joint, one centralizer 5' above float collar and one every 4th collar to surface.

Production Casing: one centralizer at shoe joint and one every 3 joints to top of cement in intermediate casing.

24) Describe all cement additives associated with each cement type:

Conductor: no additives, Class A/L cement.

Surface: Class A/L cement with 2-3% calcium chloride and 1/4 lb of flake

Intermediate: Class A/L cement with 1/4 lb of flake, 5 gallons of clay treat

Production: Lead cement- 50/50 Class H/Poz + 1.5% salt + 1% C-45 + 0.5% C-16a + 0.2% C-12 + 0.45% C-20 + 0.05% C-51

Production: Tail cement- Class H + 45 PPS Calcium Carbonate + 1.0% FL-160 + 0.2% ACGB-47 + 0.05% ACSA-51 + 0.2% ACR-20

25) Proposed borehole conditioning procedures:

Conductor: blowhole clean with air, run casing, 10 bbls fresh water.

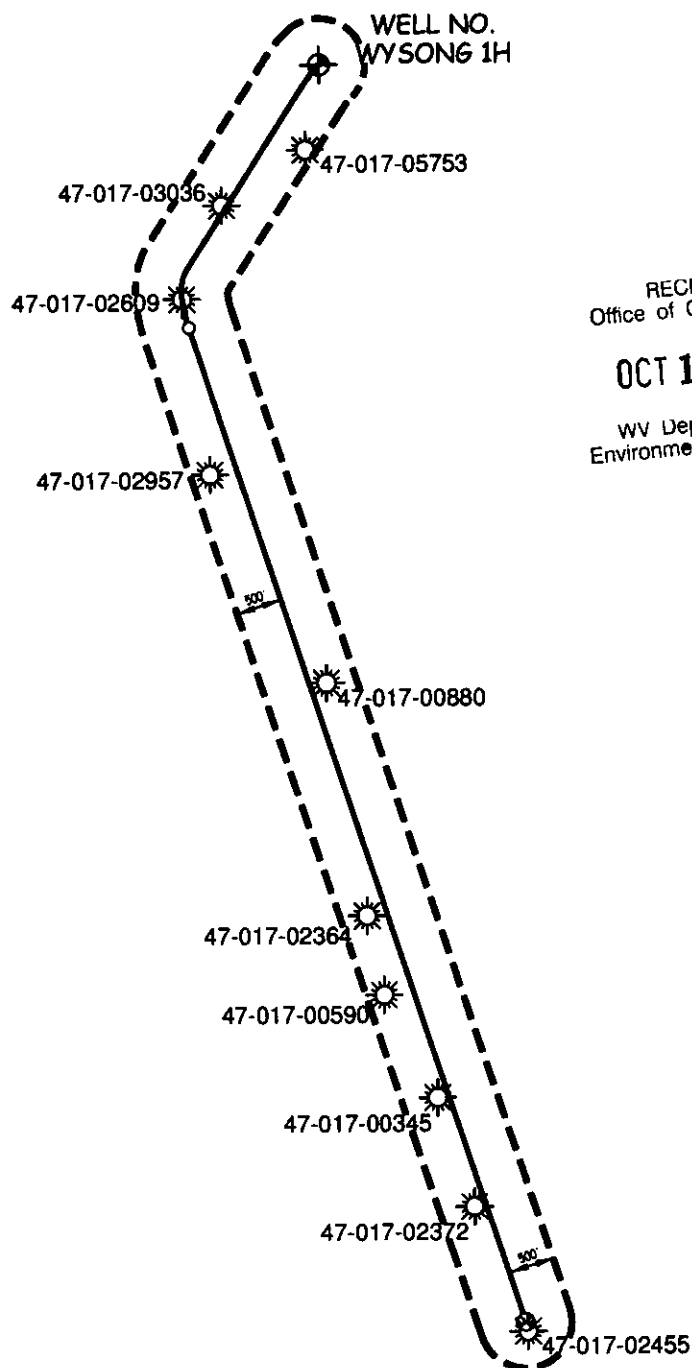
Surface: blowhole clean with air, trip conductor shoe, trip to bottom, blowhole clean with air, trip out, run casing, circulate pip capacity +40 bbls fresh water followed by 25 bbls bentonite mud, 10 bbls fresh water spacer.

Intermediate: blowhole clean with air, trip to surface casing shoe, trip to bottom, blowhole clean with air, trip out, run casing, circulate 40 bbls brine water followed by 10 bbls fresh water and 25 bbls bentonite mud, pump 10 bbls fresh water.

Production: circulate with 14 lb/gal NaCl mud, trip to middle of lateral, circulate, pump high viscosity sweep, trip to base of curve, pump high viscosity sweep, trip to top of curve, trip to bottom, circulate, pump high viscosity sweep, trip out, run casing, circulate 10 bbls fresh water, pump 48 bbls barite pill, pump 10 bbls fresh water followed by 48 bbls mud flush and 10 bbls water.

\*Note: Attach additional sheets as needed.

BRUSHY PAD  
ANTERO RESOURCES  
CORPORATION



RECEIVED  
Office of Oil and Gas

OCT 16 2025

WV Department of  
Environmental Protection

**WILLOW LAND SURVEYING, PLLC**  
P.O. BOX 17, PENNSBORO, WV 26415  
(304) 659-1717

**JOB #: 25-011WA**

FILE: WYSONG1HAOR.DWG

SCALE : 1-INCH = 2000-FEET

0' 2000' 4000' 6000'



DATE: 09/22/25

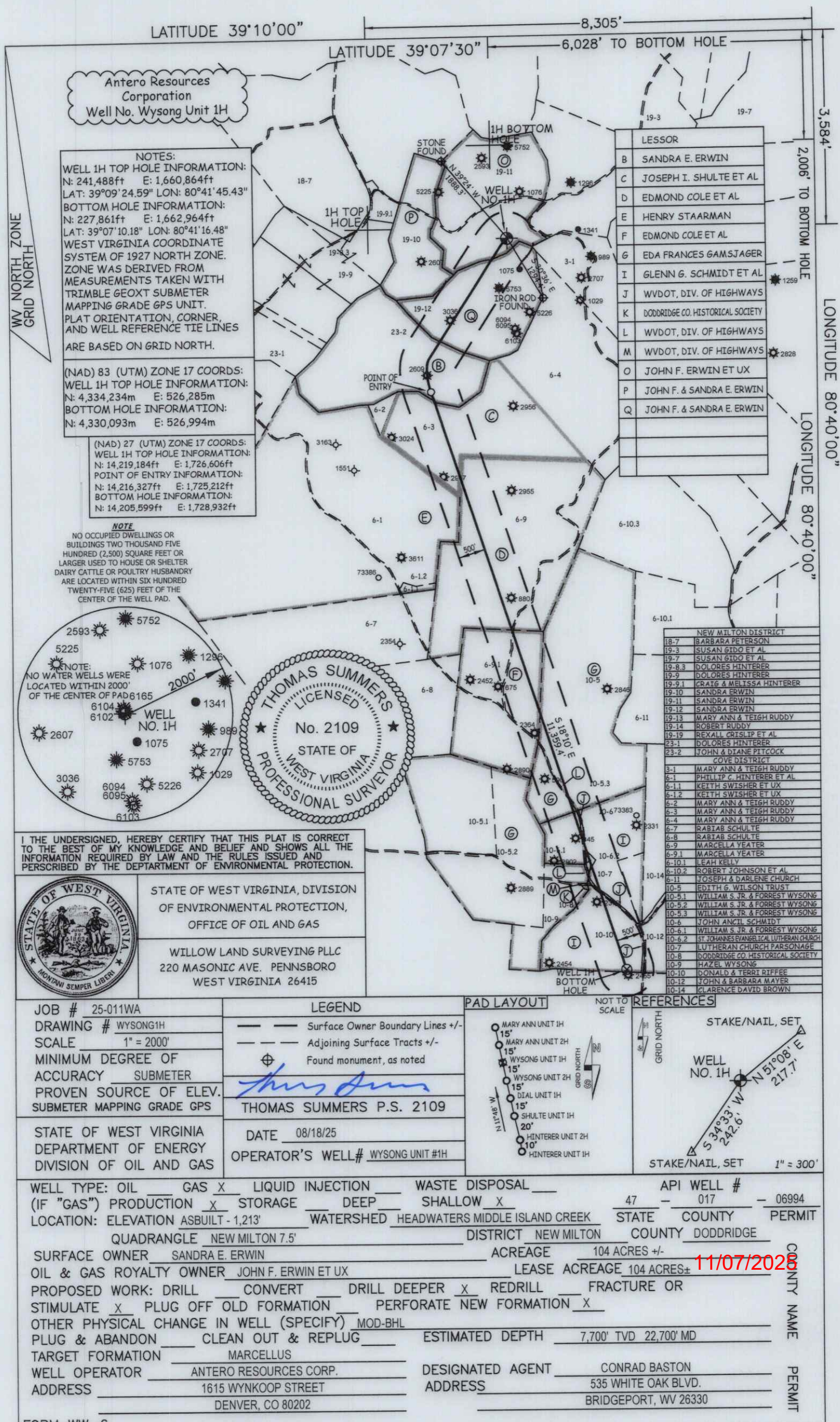
**DRAWN BY: D.R.R.**

~~11/07/2025~~

UWI (APIum)	Well Name	Well Number	Operator	Hist Oper	TD	Perforated Interval (shallowest, deepest)	Perforated Formation(s)	Producible Formation(s) not perf'd	Well Hyperlink	Don't Delete <a href="http://www.wvgs.wvm">http://www.wvgs.wvm</a>
4701703036	ERWIN JOHN ET AL	1	CARSON PETROLEUM CORP	CARSON PETROLEUM CORP	2,651	2096-2214	Blue Monday Sand, Big Injun	Weir, Benson, Alexander	<a href="#">WVGES</a>	
4701702609	ALKIRE WILMA	H-959	POSTROCK EASTERN PRODUCTION LLC	HAUGHT G L & SONS	2,532	2410-2444	Big Injun	Weir, Benson, Alexander	<a href="#">WVGES</a>	
4701702957	SHULTE W H HEIRS	3	CARSON PETROLEUM CORP	CARSON PETROLEUM CORP	5,690	2334 - 5264	Big Injun, Benson	Weir, Alexander	<a href="#">WVGES</a>	
4701700880	HENRY VANWERTH	1	PROFESSIONAL OILFIELD SERVICES INC	SOUTHRN TRIANGLE OIL	5,162		Benson	Weir, Alexander	<a href="#">WVGES</a>	
4701702364	EDMUND G COLE	1	ROCKWELL PETROLEUM	ROCKWELL PETROLEUM	5,388	4863 - 5231	Benson, Alexander	Weir	<a href="#">WVGES</a>	
4701700590	E F GAMSJAGER	1	PROFESSIONAL OILFIELD SERVICES INC	SOUTHRN TRIANGLE OIL	2,086		Big Injun	Weir, Benson, Alexander	<a href="#">WVGES</a>	
4701700345	GLENN G SCHMIDT ET	1	COX JAMES T	COX JAMES T	2,575		Big Lime	Weir, Benson, Alexander	<a href="#">WVGES</a>	
4701702372	SCHMIDT ROY B ET AL	2	ROCKWELL PETROLEUM	ROCKWELL PETROLEUM	5,150	4714 - 4985	Benson, Alexander	Weir	<a href="#">WVGES</a>	
4701702455	ROY B SCHMIDT ETAL	3	ROSS & WHARTON GAS CO	ROCKWELL PETROLEUM	5,311	4849 - 5179	Benson, Alexander	Weir	<a href="#">WVGES</a>	
4701705753	ERWIN JOHN	4	BERRY ENERGY INC	SUTTONS EXP&PROD CO	5,780	3606 - 5447	Warren, Speechley, Benson, Brailier	Weir, Alexander	<a href="#">WVGES</a>	

RECEIVED  
Office of Oil and Gas  
OCT 16 2025  
WV Department of  
Environmental Protection







LATITUDE 39°07'30"

-6,028' TO BOTTOM HOLE

NOTES:  
WELL 1H TOP HOLE INFORMATION:  
N: 241,488ft E: 1,660,864ft  
LAT: 39°09'24.59" LON: 80°41'45.43"  
BOTTOM HOLE INFORMATION:  
N: 227,861ft E: 1,662,964ft  
LAT: 39°07'10.18" LON: 80°41'16.48"  
WEST VIRGINIA COORDINATE  
SYSTEM OF 1927 NORTH ZONE.  
ZONE WAS DERIVED FROM  
MEASUREMENTS TAKEN WITH  
TRIMBLE GEOXT SUBMETER  
MAPPING GRADE GPS UNIT.  
PLAT ORIENTATION, CORNER,  
AND WELL REFERENCE TIE LINES  
ARE BASED ON GRID NORTH.

(NAD) 83 (UTM) ZONE 17 COORDS:  
WELL 1H TOP HOLE INFORMATION:  
N: 4,334,234m E: 526,285m  
BOTTOM HOLE INFORMATION:  
N: 4,330,093m E: 526,994m

(NAD) 27 (UTM) ZONE 17 COORDS:  
WELL 1H TOP HOLE INFORMATION:  
N: 14,219,184ft E: 1,726,606ft  
POINT OF ENTRY INFORMATION:  
N: 14,216,327ft E: 1,725,212ft  
BOTTOM HOLE INFORMATION:  
N: 14,205,599ft E: 1,728,932ft

**NOTE**  
NO OCCUPIED DWELLINGS OR BUILDINGS TWO THOUSAND FIVE HUNDRED (2,500) SQUARE FEET OR LARGER USED TO HOUSE OR SHELTER DAIRY CATTLE OR POULTRY HUSBANDRY ARE LOCATED WITHIN SIX HUNDRED TWENTY-FIVE (625) FEET OF THE CENTER OF THE WELL PAD.

Diagram illustrating the distribution of water wells within a 2000' radius of the center of Pad 6165. The center is marked with a star and labeled "WELL NO. 1H". A line with an arrow indicates the 2000' radius. Various well numbers are scattered around the center, some accompanied by sun-like symbols. The text "NO WATER WELLS WERE LOCATED WITHIN 2000' OF THE CENTER OF PAD 6165" is written across the upper left portion of the circle.

Well numbers shown include: 2593, 5752, 5225, 1296, 1076, 1341, 98, 2707, 1029, 5226, 6094, 6095, 6103, 5753, 1075, 2607, 3036, 6102, 6104, 6165 (center), and 1076 (near center).

I, THE UNDERSIGNED, HEREBY CERTIFY THAT THIS PLAT IS CORRECT TO THE BEST OF MY KNOWLEDGE AND BELIEF AND SHOWS ALL THE INFORMATION REQUIRED BY LAW AND THE RULES ISSUED AND PRESCRIBED BY THE DEPARTMENT OF ENVIRONMENTAL PROTECTION.



STATE OF WEST VIRGINIA, DIVISION  
OF ENVIRONMENTAL PROTECTION,  
OFFICE OF OIL AND GAS

WILLOW LAND SURVEYING PLLC  
220 MASONIC AVE. PENNSBORO  
WEST VIRGINIA 26415

JOB # 25-011WA  
DRAWING # WYSONG1H  
SCALE 1" = 2000'  
MINIMUM DEGREE OF  
ACCURACY SUBMETER  
PROVEN SOURCE OF ELEV.  
SUBMETER MAPPING GRADE GPS

STATE OF WEST VIRGINIA  
DEPARTMENT OF ENERGY  
DIVISION OF OIL AND GAS

### LEGEND

Surface Owner Boundary Lines +/-  
Adjoining Surface Tracts +/-  
Found monument, as noted

THOMAS SUMMERS P.S. 2109

DATE 08/18/25

OPERATOR'S WELL # WYSONG UNIT #1H

## PAD LAYOUT

NOT TO  
SCALE

## REFERENCES

Diagram illustrating the proposed well path for the Mary Ann Unit. The path is shown as a series of circles connected by a line, with distances between them. The path is labeled with unit names and distances:

- MARY ANN UNIT 1H (15')
- MARY ANN UNIT 2H (15')
- WYSONG UNIT 1H (15')
- WYSONG UNIT 2H (15')
- DIAL UNIT 1H (15')
- SHULTE UNIT 1H (20')
- HINTERER UNIT 2H (10')
- HINTERER UNIT 1H (10')

A north arrow is shown to the left of the path, pointing towards the top-left. A scale bar is shown to the right of the path, indicating 0, 10, and 20 feet.

STAKE/NAIL, SET

WELL NO. 1H

217.7' N 5°08' E

242.6' S 34°33' W

GRID NORTH

WELL TYPE: OIL	<input checked="" type="checkbox"/> GAS	<input type="checkbox"/> LIQUID INJECTION	<input type="checkbox"/> WASTE DISPOSAL	API WELL #	47	017	06994
(IF "GAS") PRODUCTION	<input checked="" type="checkbox"/> STORAGE	<input type="checkbox"/> DEEP	<input checked="" type="checkbox"/> SHALLOW	STATE	COUNTY	PERMIT	
LOCATION: ELEVATION	ASBUILT - 1,213'	WATERSHED	HEADWATERS MIDDLE ISLAND CREEK	COUNTY	DODDRIDGE		
QUADRANGLE	NEW MILTON 7.5'	DISTRICT	NEW MILTON				
SURFACE OWNER	SANDRA E. ERWIN	ACREAGE	104 ACRES +/-				
OIL & GAS ROYALTY OWNER	JOHN F. ERWIN ET UX	LEASE ACREAGE	104 ACRES±				
PROPOSED WORK: DRILL	<input type="checkbox"/> CONVERT	DRILL DEEPER	<input checked="" type="checkbox"/> REDRILL	FRACTURE OR			
STIMULATE	<input checked="" type="checkbox"/> PLUG OFF OLD FORMATION	PERFORATE	NEW FORMATION	<input checked="" type="checkbox"/>			
OTHER PHYSICAL CHANGE IN WELL (SPECIFY)	MOD-BHL						
PLUG & ABANDON	<input type="checkbox"/> CLEAN OUT & REPLUG	ESTIMATED DEPTH	7,700' TVD 22,700' MD				
TARGET FORMATION	MARCELLUS						
WELL OPERATOR	ANTERO RESOURCES CORP.	DESIGNATED AGENT	CONRAD BASTON				
ADDRESS	1615 WYNKOOP STREET	ADDRESS	535 WHITE OAK BLVD.				
	DENVER, CO 80202		BRIDGEPORT, WV 26330				

FORM WW-6



INFORMATION SUPPLIED UNDER WEST VIRGINIA CODE  
Chapter 22, Article 6A, Section 5(a)(5)  
IN LIEU OF FILING LEASE(S) AND OTHER CONTINUING CONTRACT(S)

Under the oath required to make the verification on page 1 of this Notice and Application, I depose and say that I am the person who signed the Notice and Application for the Applicant, and that –

(1) the tract of land is the same tract described in this Application, partly or wholly depicted in the accompanying plat, and described in the Construction and Reclamation Plan;

(2) the parties and recordation data (if recorded) for lease(s) or other continuing contract(s) by which the Applicant claims the right to extract, produce or market the oil or gas are as follows:

Grantor, lessor, etc.	Grantee, lessee, etc.	Royalty	Book/Page
<b>O: John F. Erwin, et ux Lease</b>			
John F. Erwin, et ux	Bluestone Energy Partners	1/8	251/486
Bluestone Energy Partners	BEP Merger Sub, LP	RECEIVED Office of Oil and Gas	288/1
BEP Merger Sub, LP	Antero Resources Corporation	Merger Merger	288/1
<b>Q: John F. &amp; Sandra E. Erwin Lease</b>			
John F. & Sandra E. Erwin	Antero Resources Appalachian	OCT 16 2025	272/573
Antero Resources Appalachian	Antero Resources Corporation	1/8+ Name Change	46/523
<b>B: Sandra E. Erwin Lease</b>			
Sandra E. Erwin	Antero Resources Corporation	1/8+	537/470
<b>C: Joseph I. Shulte, et al Lease</b>			
Joseph I. Shulte, et al	Rockwell Petroleum Company	1/8	110/6
Rockwell Petroleum Company	Carson Petroleum Corporation, et al	Assignment	117/525
Carson Petroleum Corporation, et al	Devon Energy Corporation	Assignment	128/273
Devon Energy Corporation	Abarta Oil and Gas Company Inc	Assignment	178/682
Abarta Oil and Gas Company Inc	Antero Resources Appalachian Corporation	Assignment	261/463
Antero Resources Appalachian Corporation	Antero Resources Corporation	Name Change	46/523
<b>D: Edmond Cole, et al Lease</b>			
Edmond Cole, et al	J.M.L. Smith	1/8	61/214
J.M.L. Smith	Kewanee Oil Company	Assignment	62/8
Kewanee Oil Company	John S. Bailey	Assignment	68/439
John S. Bailey	Triangle Oil Company, et al	Assignment	69/46
Triangle Oil Company, et al	New Triangle Oil Company	Assignment	149/174
New Triangle Oil Company	Professional Oilfield Services Inc	Assignment	194/277
Professional Oilfield Services Inc	Bluestone Energy Partners	Assignment	246/181
Bluestone Energy Partners	BEP Merger Sub LP	Merger	288/1
BEP Merger Sub LP	Antero Resources Corporation	Merger	288/1
<b>F: Edmond Cole, et al Lease</b>			
Edmond Cole, et al	Rockwell Petroleum Company	1/8	108/142
Rockwell Petroleum Company	Rockwell Resources, LLC	Assignment	260/429
Rockwell Resources, LLC	Antero Resources Appalachian	Assignment	267/244
Antero Resources Appalachian	Antero Resources Corporation	Name Change	46/523
<b>G: Eda Francis Gamsjager Lease</b>			
Eda Francis Gamsjager	J.M.L. Smith	1/8	61/222
J.M.L. Smith	Kewanee Oil Company	Assignment	62/8
Kewanee Oil Company	John S. Bailey	Assignment	68/438
John S. Bailey	Triangle Oil Company	Assignment	69/46
Triangle Oil Company	New Triangle Oil Company	Assignment	149/174
New Triangle Oil Company	Professional Oilfield Services Inc	Assignment	194/277
Professional Oilfield Services Inc	Bluestone Energy Partners	Assignment	246/181
Bluestone Energy Partners	BEP Merger Sub LP	Merger	288/1
BEP Merger Sub LP	Antero Resources Corporation	Merger	288/1

11/07/2025

INFORMATION SUPPLIED UNDER WEST VIRGINIA CODE  
Chapter 22, Article 6A, Section 5(a)(5)  
IN LIEU OF FILING LEASE(S) AND OTHER CONTINUING CONTRACT(S)

Under the oath required to make the verification on page 1 of this Notice and Application, I depose and say that I am the person who signed the Notice and Application for the Applicant, and that –

- (1) the tract of land is the same tract described in this Application, partly or wholly depicted in the accompanying plat, and described in the Construction and Reclamation Plan;
- (2) the parties and recordation data (if recorded) for lease(s) or other continuing contract(s) by which the Applicant claims the right to extract, produce or market the oil or gas are as follows:

Grantor, lessor, etc.	Grantee, lessee, etc.	Royalty	Book/Page
<b>I: WVDOT, Div. of Highways Lease</b> WVDOT, Div. of Highways	Antero Resources Corporation	1/8	Pooled Tract
<b>G: Eda Frances Gamsjager Lease</b> Eda Frances Gamsjager J.M.L. Smith Kewanee Oil Company John S. Bailey Triangle Oil Company New Triangle Oil Company Professional Oilfield Services Inc Bluestone Energy Partners BEP Merger Sub LP	J.M.L. Smith Kewanee Oil Company John S. Bailey Triangle Oil Company New Triangle Oil Company Professional Oilfield Services Inc Bluestone Energy Partners BEP Merger Sub LP Antero Resources Corporation	RECEIVED Office of Oil and Gas  OCT 16 2025  WV Department of Environmental Protection	1/8 Assignment Assignment Assignment Assignment Assignment Assignment Merger Merger 61/222 62/8 68/438 69/46 149/174 194/277 246/181 288/1 288/1
<b>I: Glenn G. Schmidt, et al Lease</b> Glenn G. Schmidt, et al Rockwell Petroleum Company Carson Petroleum Corporation Devon Energy Corporation Abarta Oil and Gas Company, Inc Antero Resources Appalachian HG Energy II Appalachia, LLC	Rockwell Petroleum Company Carson Petroleum Corporation Devon Energy Corporation Abarta Oil and Gas Company, Inc Antero Resources Appalachian HG Energy II Appalachia, LLC Antero Resources Corporation	1/8 Assignment Assignment Assignment Assignment Assignment Assignment	106/639 107/704 126/434 178/682 261/463 512/658 543/170
<b>J: WVDOT, Div. of Highways Lease</b> WVDOT, Div. of Highways	Antero Resources Corporation	1/8	Pooled Tract
<b>I: Glenn G. Schmidt, et al Lease</b> Glenn G. Schmidt, et al Rockwell Petroleum Company Carson Petroleum Corporation Devon Energy Corporation Abarta Oil and Gas Company, Inc Antero Resources Appalachian HG Energy II Appalachia, LLC	Rockwell Petroleum Company Carson Petroleum Corporation Devon Energy Corporation Abarta Oil and Gas Company, Inc Antero Resources Appalachian HG Energy II Appalachia, LLC Antero Resources Corporation	1/8 Assignment Assignment Assignment Assignment Assignment Assignment	106/639 107/704 126/434 178/682 261/463 512/658 543/170
<b>J: WVDOT, Div. of Highways Lease</b> WVDOT, Div. of Highways	Antero Resources Corporation	1/8	Pooled Tract

\*Partial Assignments to Antero Resources Corporation include 100% rights to extract, produce and market the oil and gas from the Marcellus and any other formations completed with this well.

\*Cotenancy Utilization - Antero is utilizing the Co-tenancy Modernization and Majority Protection Act to proceed with development of certain royalty owners' interests in this tract.

\*\*Pooling/Unitization - Antero has filed a horizontal well unitization application with the West Virginia Oil and Gas Conservation Commission that seeks to pool certain owners in this tract

11/07/2025



**INFORMATION SUPPLIED UNDER WEST VIRGINIA CODE**  
**Chapter 22, Article 6A, Section 5(a)(5)**  
**IN LIEU OF FILING LEASE(S) AND OTHER CONTINUING CONTRACT(S)**

Under the oath required to make the verification on page 1 of this Notice and Application, I depose and say that I am the person who signed the Notice and Application for the Applicant, and that –

- (1) the tract of land is the same tract described in this Application, partly or wholly depicted in the accompanying plat, and described in the Construction and Reclamation Plan;
- (2) the parties and recordation data (if recorded) for lease(s) or other continuing contract(s) by which the Applicant claims the right to extract, produce or market the oil or gas are as follows:

Lease Name or Number	Grantor, Lessor, etc.	Grantee, Lessee, etc.	Royalty	Book/Page
<b>I: Glenn G. Schmidt, et al Lease</b>				
	Glenn G. Schmidt, et al	Rockwell Petroleum Company	1/8	106/639
	Rockwell Petroleum Company	Carson Petroleum Corporation	Assignment	107/704
	Carson Petroleum Corporation	Devon Energy Corporation	Assignment	126/434
	Devon Energy Corporation	Abarta Oil and Gas Company, Inc	Assignment	178/682
	Abarta Oil and Gas Company, Inc	Antero Resources Appalachian	Assignment	261/463
	Antero Resources Appalachian	HG Energy II Appalachia, LLC	Assignment	512/658
	HG Energy II Appalachia, LLC	Antero Resources Corporation	Assignment	543/170

**\*Cotenancy Utilization** - Antero is utilizing the Co-tenancy Modernization and Majority Protection Act to proceed with development of certain royalty owners' interests in this tract.

**\*\*Pooling/Unitization** - Antero has filed a horizontal well unitization application with the West Virginia Oil and Gas Conservation Commission that seeks to pool certain owners in this tract

**Acknowledgement of Possible Permitting/Approval**  
**In Addition to the Office of Oil and Gas**

The permit applicant for the proposed well work addressed in this application hereby acknowledges the possibility of the need for permits and/or approvals from local, state, or federal entities in addition to the DEP, Office of Oil and Gas, including but not limited to the following:

- WV Division of Water and Waste Management
- WV Division of Natural Resources WV Division of Highways
- U.S. Army Corps of Engineers
- U.S. Fish and Wildlife Service
- County Floodplain Coordinator

RECEIVED  
Office of Oil and Gas

**OCT 16 2025**

WV Department of  
Environmental Protection

The applicant further acknowledges that any Office of Oil and Gas permit in no way overrides, replaces, or nullifies the need for other permits/approvals that may be necessary and further affirms that all needed permits/approvals should be acquired from the appropriate authority before the affected activity is initiated.

Well Operator: Antero Resources Corporation

By: Tim Rady

Its: Senior Vice President of Land

INFORMATION SUPPLIED UNDER WEST VIRGINIA CODE  
Chapter 22, Article 6A, Section 5(a)(5)  
IN LIEU OF FILING LEASE(S) AND OTHER CONTINUING CONTRACT(S)

Under the oath required to make the verification on page 1 of this Notice and Application, I depose and say that I am the person who signed the Notice and Application for the Applicant, and that –

- (1) the tract of land is the same tract described in this Application, partly or wholly depicted in the accompanying plat, and described in the Construction and Reclamation Plan;
- (2) the parties and recordation data (if recorded) for lease(s) or other continuing contract(s) by which the Applicant claims the right to extract, produce or market the oil or gas are as follows:

---

Grantor, lessor, etc.

Grantee, lessee, etc.

Royalty

Book/Page

---

RECEIVED  
Office of Oil and Gas

**OCT 16 2025**

WV Department of  
Environmental Protection

11/07/2025