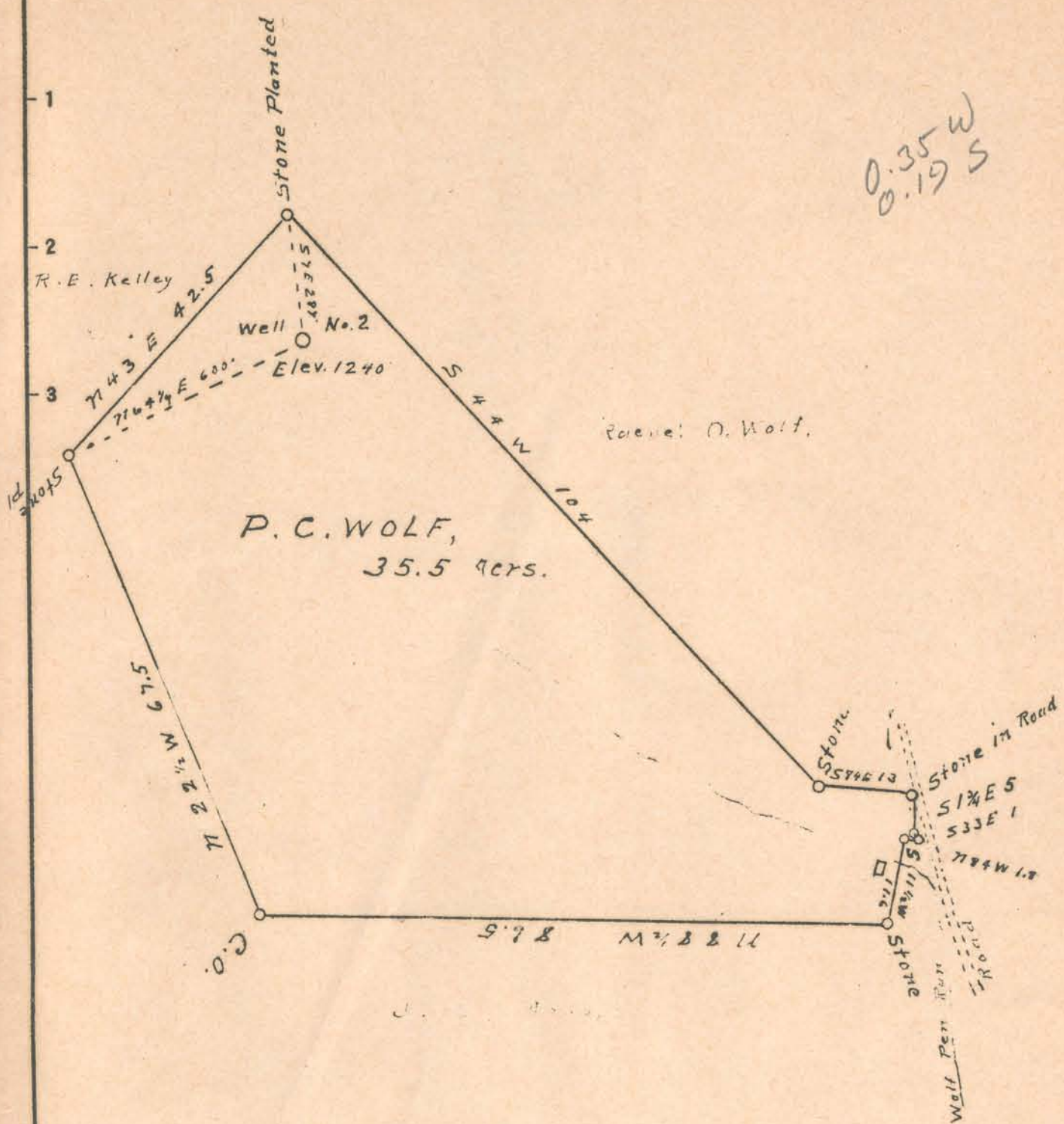


Latitude 37° 15' +

Longitude 80° 40'



New Location
 Drill Deeper
 Abandonment

Company Trainer & Travis
 Address Salem, W.Va.
 Farm P. C. Wolf
 Tract one Acres 35.5 Lease No. _____
 Well (Farm) No. 2 Serial No. _____
 Elevation (Spirit Level) 1240
 Quadrangle Vadis
 County Doddridge District New Milton
 Engineer J. M. Martin
 Engineer's Registration No. 84
 File No. _____ Drawing No. _____
 Date April 25 1941 Scale 20 P 1"

STATE OF WEST VIRGINIA
 DEPARTMENT OF MINES
 OIL AND GAS DIVISION
 CHARLESTON

WELL LOCATION MAP
 FILE NO. DOD-361A

+ Denotes location of well on United States Topographic Maps, scale 1 to 62,500, latitude and longitude lines being represented by border lines as shown.
 - Denotes one inch spaces on border line of original tracing.