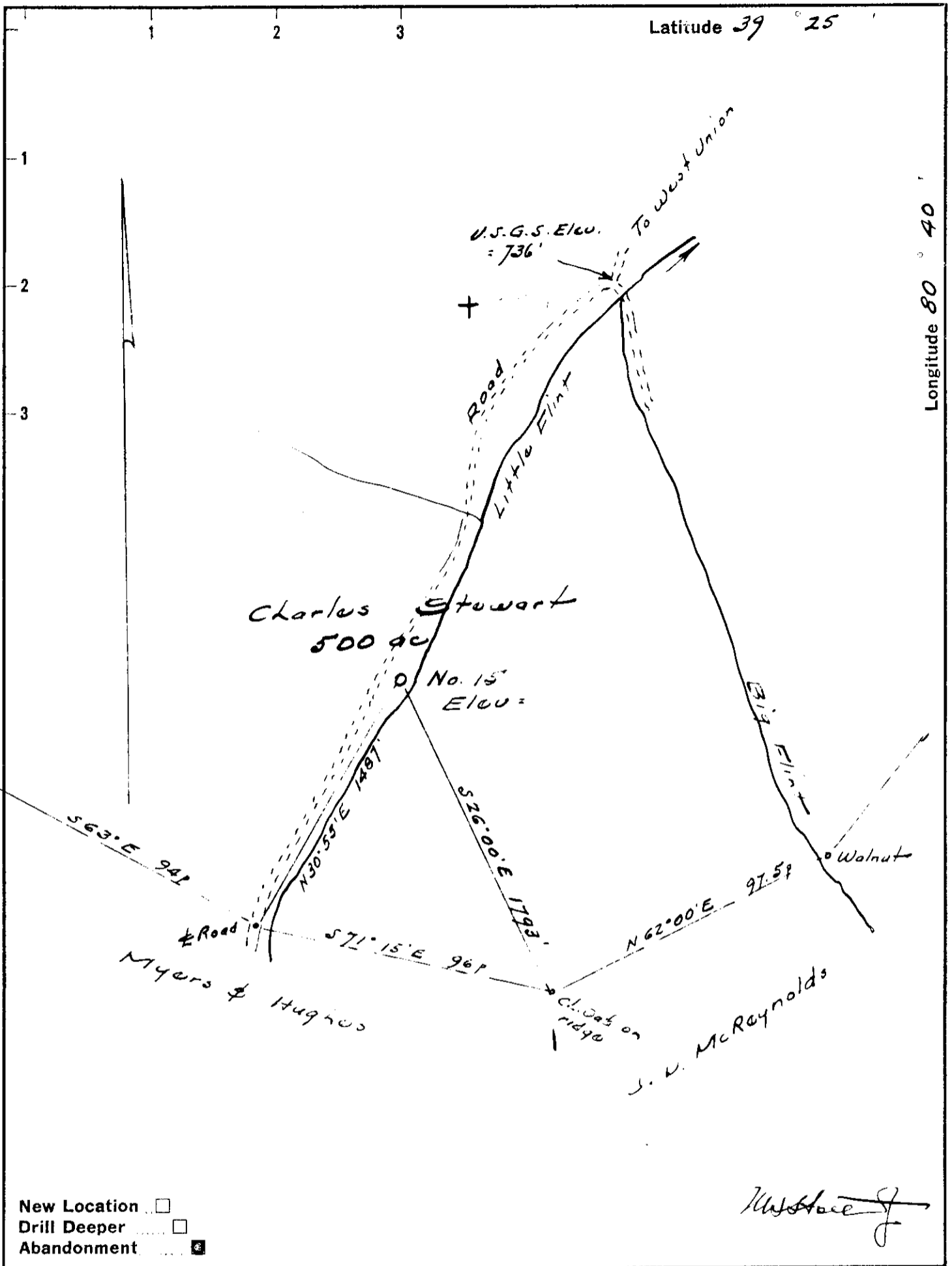


Latitude 39 25

Longitude 80 40



- New Location
- Drill Deeper
- Abandonment

Company William Cassady
 Address Vienna, West Va.
 Farm Charles Stewart
 Tract _____ Acres 500 Lease No. _____
 Well (Farm) No. 15 Serial No. _____
 Elevation (Spirit Level) 773
 Quadrangle Centerpoint
 County Doddridge District Grant
 Engineer W. H. H. J.
 Engineer's Registration No. 1227
 File No. _____ Drawing No. _____
 Date March 25, 1963 Scale 1" = 40'

STATE OF WEST VIRGINIA
 DEPARTMENT OF MINES
 OIL AND GAS DIVISION
 CHARLESTON

WELL LOCATION MAP
 FILE NO. Dod. 1174-A

+ Denotes location of well on United States Topographic Maps, scale 1 to 62,500, latitude and longitude lines being represented by border lines as shown.

- Denotes one inch spaces on border line of original tracing.