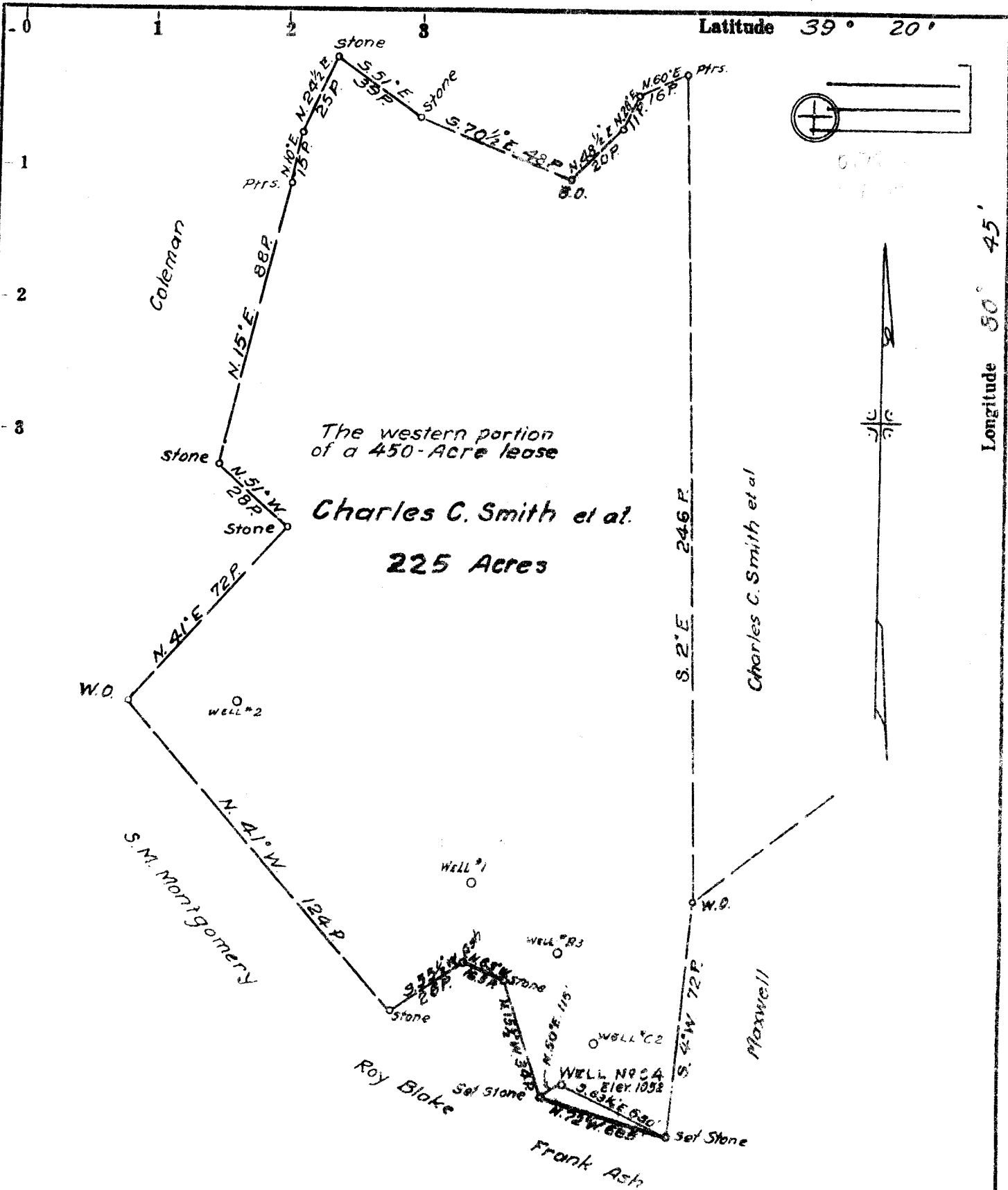


11/2/72



The western portion of a 450-Acre lease

Charles C. Smith et al.
225 Acres

- Fracture....
- Redrill....
- New Location
- Drill Deeper.....
- Abandonment.....

Source of Elevation U.S.G.S. B.M. at West Union - Elev. 836

I, the undersigned hereby certify that this map is correct to the best of my knowledge and belief and shows all the information required by paragraph 6 of the rules and regulations of the oil and gas section of the mining laws of West Virginia.

Minimum accuracy, one part in 400

Company A W Bailey
 Address Box 24, Route 3, Harrisville, W. Va. 26352
 Farm Charles C. Smith et al.
 Tract 1 Acres 225 Lease No. _____
 Well (Farm) No. C 4 Serial No. _____
 Elevation (Spirit Level) 1052
 Quadrangle West Union
 County Doddridge District West Union
 Surveyor or Engineer Parker E. Peters
 Surveyor's or Engineer's Registration No. 485
 File No. _____ Drawing No. _____
 Date May 4, 1970 Scale 1" = 40 P.

STATE OF WEST VIRGINIA
 DEPARTMENT OF MINES
 OIL AND GAS DIVISION
 CHARLESTON

WELL LOCATION MAP
 FILE NO. Dad-1243(A)

+ Denotes location of well on United States Topographic Maps, scale 1 to 62,500, latitude and longitude lines being represented by border lines as shown.

— Denotes one inch spaces on border line of original tracing.