

WW-7
8-30-06



West Virginia Department of Environmental Protection
Office of Oil and Gas

WELL LOCATION FORM: GPS

API: 47-019-00155 WELL NO.: Berwind No. 2

FARM NAME: U. S. National Park Service

RESPONSIBLE PARTY NAME: Berwind Oil & Gas LLC

COUNTY: Fayette DISTRICT: Fayetteville

QUADRANGLE: Fayetteville

SURFACE OWNER: U. S. National Park Service

ROYALTY OWNER: Berwind Land Company

UTM GPS NORTHING: 4,212,147.09 (1820')

UTM GPS EASTING: 491,989.00 GPS ELEVATION: 555.038

The Responsible Party named above has chosen to submit GPS coordinates in lieu of preparing a new well location plat for a plugging permit or assigned API number on the above well. The Office of Oil and Gas will not accept GPS coordinates that do not meet the following requirements:

- 1. Datum: NAD 1983, Zone: 17 ~~North~~ ^{South} Coordinate Units: meters, Altitude: height above mean sea level (MSL) – meters.
- 2. Accuracy to Datum – 3.05 meters
- 3. Data Collection Method:

Survey grade GPS X: Post Processed Differential _____

Real-Time Differential X

Mapping Grade GPS _____: Post Processed Differential _____

Real-Time Differential _____

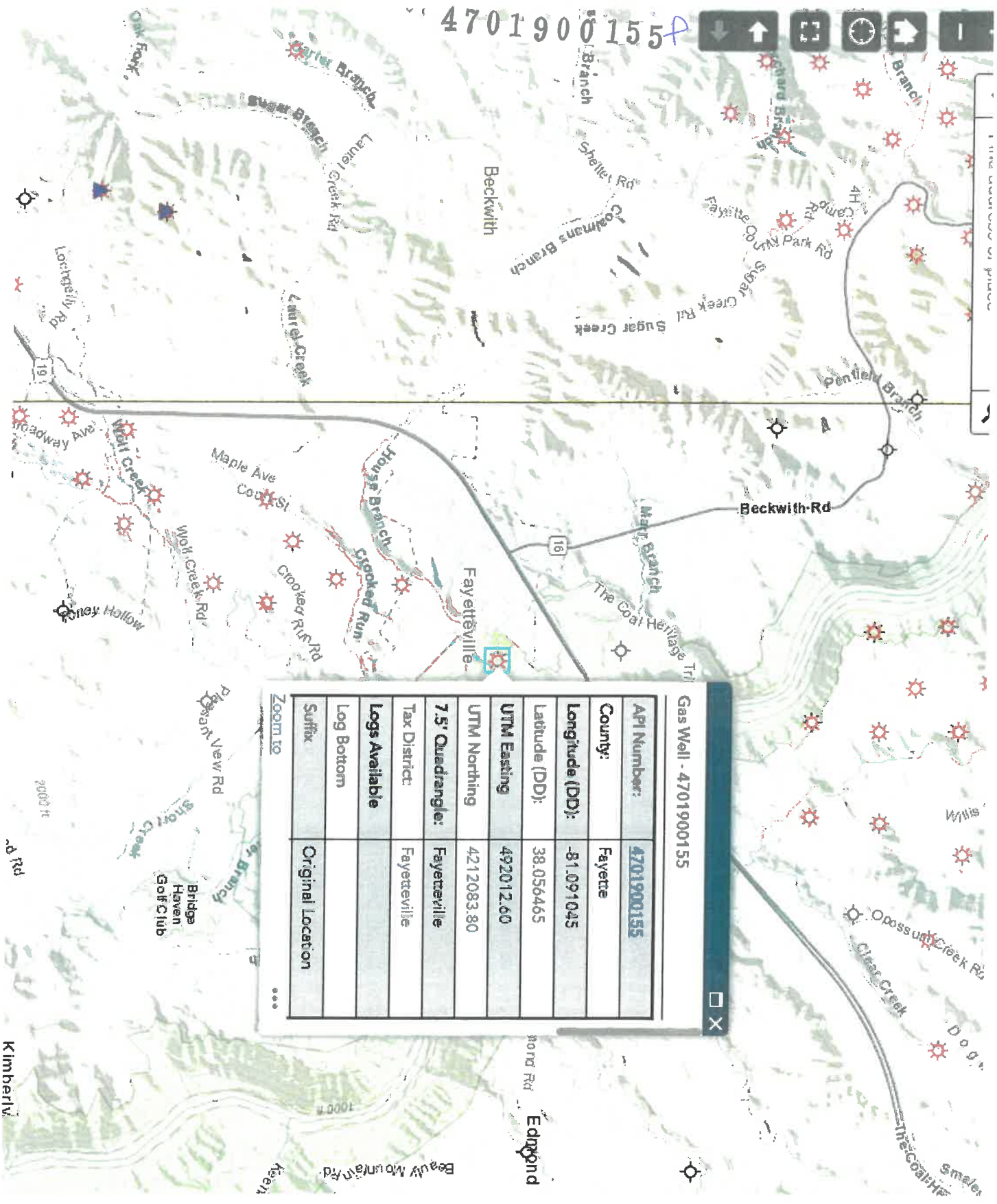
4. Letter size copy of the topography map showing the well location.

I the undersigned, hereby certify this data is correct to the best of my knowledge and belief and shows all the information required by law and the regulations issued and prescribed by the Office of Oil and Gas.

Ljy Dgk Land Manager 10/5/22
Signature Title Date

RECEIVED
Office of Oil and Gas
OCT 17 2022
WV Department of
Environmental Protection

4701900155



Gas Well - 4701900155

API Number:	4701900155
County:	Fayette
Longitude (DD):	-81.091045
Latitude (DD):	38.056465
UTM Easting	492012.60
UTM Northing	4212083.80
7.5' Quadrangle:	Fayetteville
Tax District:	Fayetteville
Logs Available	
Log Bottom	
Suffix	Original Location

Zoom to

RECEIVED
Office of Oil and Gas

OCT 17 2022

WV Department of
Environmental Protection

12/02/2022