

WW-7
8-30-06



West Virginia Department of Environmental Protection
Office of Oil and Gas
WELL LOCATION FORM: GPS

API: 47-019-00680 WELL NO.: 12951

FARM NAME: Elkem Metal Co.

RESPONSIBLE PARTY NAME: Diversified Production LLC

COUNTY: Fayette DISTRICT: Valley

QUADRANGLE: Montgomery

SURFACE OWNER: WVA Manufacturing LLC

ROYALTY OWNER: Elkem Metals Co.

UTM GPS NORTHING: 4,221,454.54

UTM GPS EASTING: 475,174.98 GPS ELEVATION: 639.2'

The Responsible Party named above has chosen to submit GPS coordinates in lieu of preparing a new well location plat for a plugging permit or assigned API number on the above well. The Office of Oil and Gas will not accept GPS coordinates that do not meet the following requirements:

- Datum: NAD 1983, Zone: 17 North, Coordinate Units: meters, Altitude: height above mean sea level (MSL) – meters.
- Accuracy to Datum – 3.05 meters
- Data Collection Method:
Survey grade GPS ____ : Post Processed Differential ____
Real-Time Differential ____
Mapping Grade GPS X : Post Processed Differential X
Real-Time Differential ____

RECEIVED
Office of Oil and Gas
MAY 04 2021
WV Department of
Environmental Protection

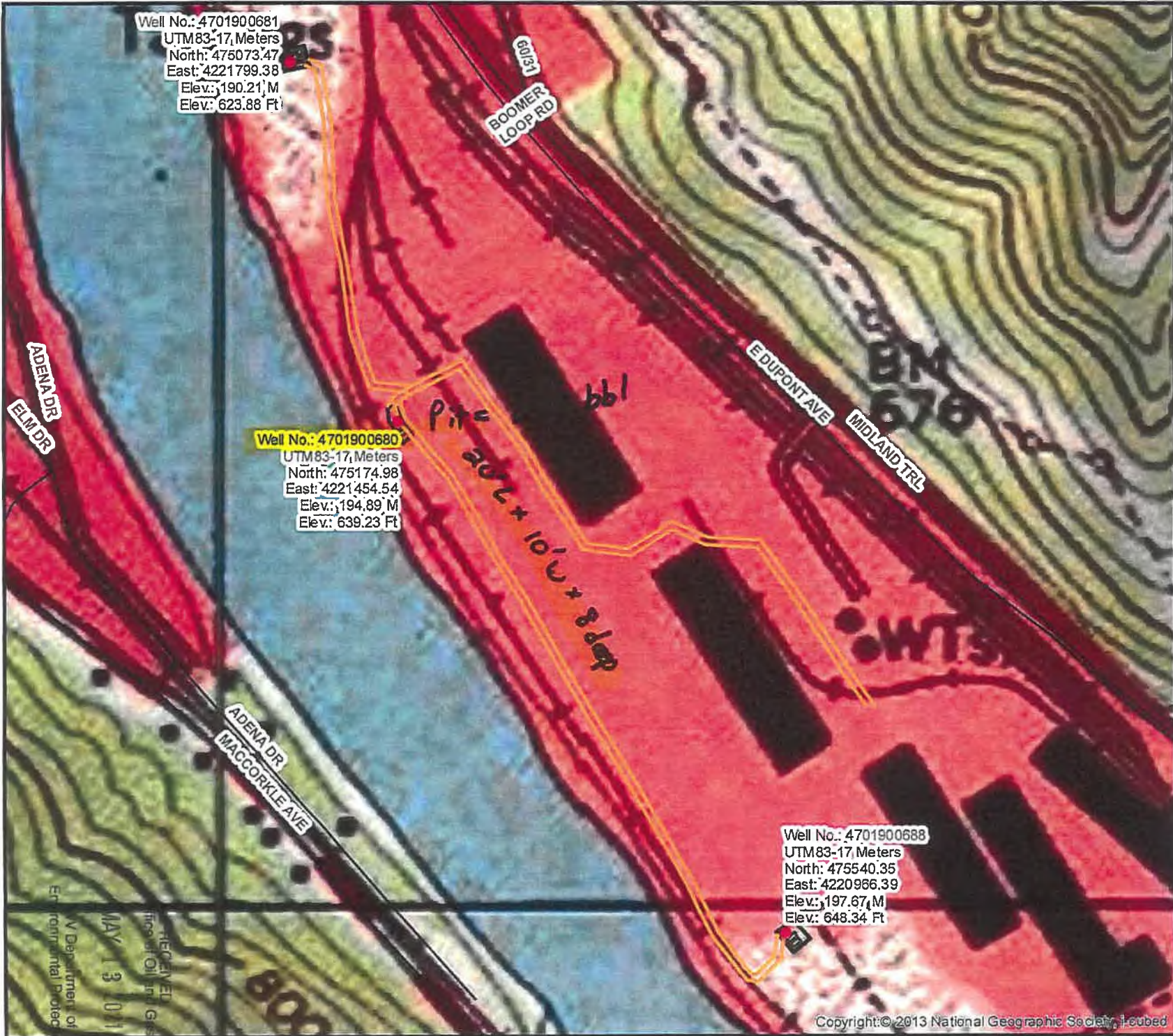
4. Letter size copy of the topography map showing the well location.

I the undersigned, hereby certify this data is correct to the best of my knowledge and belief and shows all the information required by law and the regulations issued and prescribed by the Office of Oil and Gas.

[Signature]
Signature

Director Production
Title

03/19/2021
Date



Diversified Gas & Oil Corporation
 100 Diversified Way
 Pikeville KY, 41051

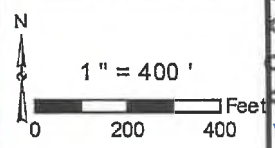
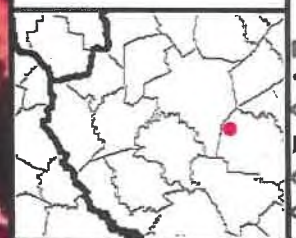
47-019-00688, 47-019-00681,
 47-019-00680

Plugging Map

Legend

- Well
- Access Road
- Pits
- Pad
- Public Roads

JK



Copyright: © 2013 National Geographic Society, Inc.

MAY 13 2011
 HERGENELT
 Fiscal Oil and Gas
 Environmental Protection

4701900680P