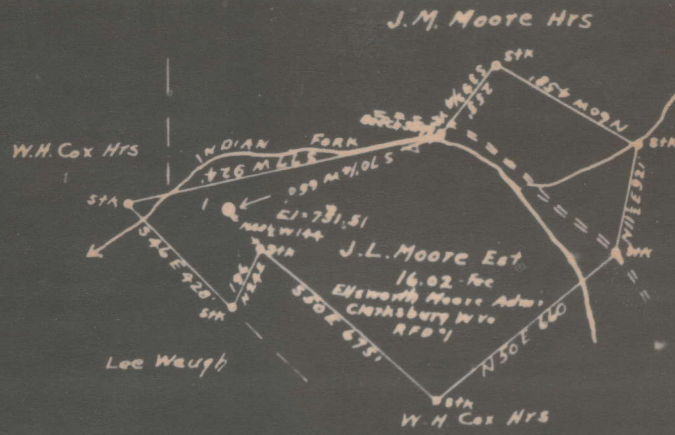




62  
62-A



South Penn Oil Co.  
Survey for abandonment of  
Well No. 1 - Arnold Moore.  
Glennville Dist. Gilmer Co. W Va

M

Glenville District, Gilmer County, W. Va. 62-A  
 South Penn Oil Co., Chamber of Commerce Bldg., Pittsburgh, Pa.  
 On 540 acres, surface and mineral rights owned by J. L. Moore  
 Estate, Ellsworth Moore, Admr., R. F. D. No. 1, Clarksburg,  
 W. Va.

Elevation, 751.51' L.  
 16' conductor; 10" casing, 124' 10" (pulled); 8 1/4", 650' (pulled);  
 6-5/8", 1748'.

Abandonment reported to Dept. of Mines Aug. 24, 1934.

Well was shot Feb. 20, 1920, with 60 qts.

Oil well.

	Top.	Bottom.
Shell	509	
Big Dunkard Sand	645 -	700
Salt Sand	1410 -	1510
Maxton Sand	1580 -	1630
Big Lime	1725 -	1850
Big Injun Sand	1850 -	2100
Stray Sand, shell		2437
Gordon Sand		2452
Fifth Sand (oil, 2663')	2662 -	2669
Total depth		2697

Heirs  
ARNOLD MOORE/NO. 1 WELL.

No. 1314 on Map.

701

No 106 O.F. - Gilmer

Glenville District, Gilmer County, W. Va.  
On Indian Fork, 1.0 mi. N. W. of Blackburn.  
South Penn Oil Co.  
Elevation, 765' B.

	Top.	Bottom.
Bakerstown Coal	559	
Big Diskard Sand	645	700
Salt Sand	1410	1510
Waxton Sand	1580	1630
Big Lime	1725	1850
Big Injun Sand	1850	2100
Gordon Stray Sand	2434	
Gordon Sand	2452	
Fifth Sand (oil, 2663')	2662	2669
Total depth		2697

SOUTH PENN OIL  
 Chamber of Commerce Bldg.,  
 Pittsburgh, Pa.

Company  
 Address

COMPLETION DATA SHEET

No. 2

Well No. 1, - Arnold Moore Farm.

FORMATION RECORD

Name	Color	Character	Oil, Gas or Water	Top	Bottom	Thickness	Total Depth	Remarks
Shell				509				
Big Dunkard Sand				645	700			
Salt Sand				1410	1510			
Maxon Sand				1580	1630			
Big Lime				1725	1850			
Big Injun Sand				1850	2100			1725 64
Stray - shell					2437			
Gordon					2452			
Fifth Sand				2662	2669			
			Oil	2663				
Total Depth							2697	

Well was ~~shot~~ shot Feb. 20-1920, 60 qts. feet; well was shot at \_\_\_\_\_ feet.

Salt Fresh water at \_\_\_\_\_ salt feet; fresh water at \_\_\_\_\_ feet.

Well was ~~not~~ producing hole.

SOUTH PENN OIL COMPANY,

WEST VIRGINIA DEPARTMENT OF MINES

OIL AND GAS DIVISION

PRELIMINARY DATA SHEET NO. 1

File No. \_\_\_\_\_ Well No. 1  
SOUTH PENN OIL Company, of Chamber of Commerce Bldg.  
Pittsburgh, Pa. on the Arnold Moore Farm  
 containing 540 acres. Location \_\_\_\_\_  
Glenville District, in Gilmer County, West Virginia

The surface of the above tract is owned in fee by J. L. Moore Estate  
c/o Ellsworth Moore, Admr.,  
 of R. F. D. No. 1, Clarksburg, W. Va. address and the mineral rights are owned by  
J. L. Moore Estate of c/o Ellsworth Moore, Admr.  
R.F.D.NO. 1, Clarksburg, W.Va.

The oil and gas privileges are held under lease by the above named company, and this well is drilled under permit  
 No. \_\_\_\_\_ issued by the West Virginia Department of Mines, Oil and Gas Division

\_\_\_\_\_ 193  
 Elevation of surface at top of well, 751.51' Spirit  
 Barometric

The number of feet of the different sized casings used in the well.

16	feet	size	Wood conductor
<u>124'10" (Pulled)</u>	<u>feet</u>	<u>10"</u> size, reg.	<u>feet</u> sized reg.
<u>650 (Pulled)</u>	<u>feet</u>	<u>8-1/4"</u> size, reg.	<u>feet</u> sized reg.
<u>1748</u>	<u>feet</u>	<u>6-5/8"</u> size, reg.	<u>feet</u> sized reg.
	packer at	size, set at	
	packer at	size, set at	
	in casing perforated at	feet to	feet
	in casing perforated at	feet to	feet

Coal was encountered at \_\_\_\_\_ feet; thickness \_\_\_\_\_ inches, and at  
 feet; thickness \_\_\_\_\_ inches; and at \_\_\_\_\_ feet; thickness \_\_\_\_\_ inches.

Liners were used as follows: (Give details) \_\_\_\_\_

August 24, 1934.

