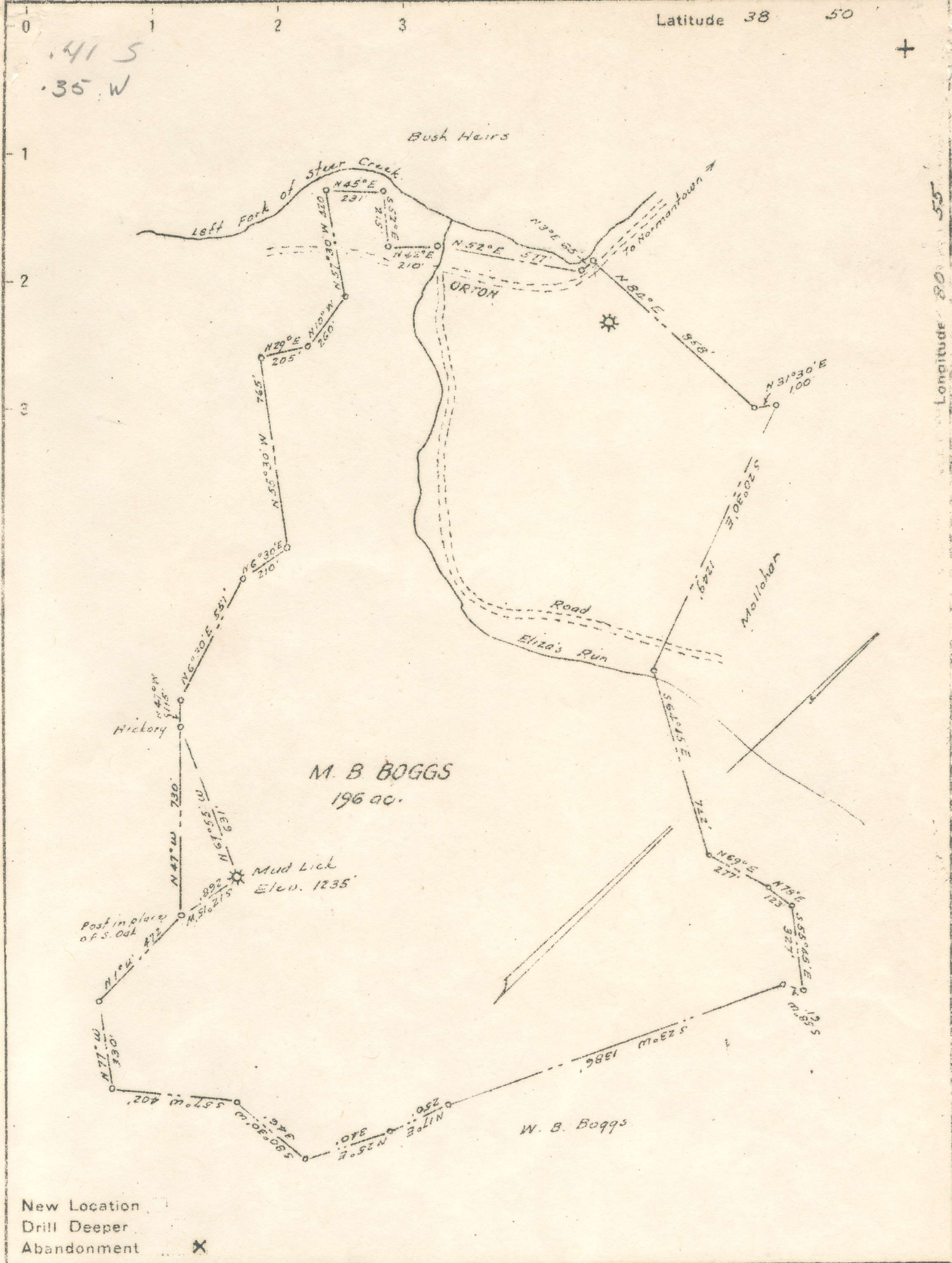


415  
35 W



New Location   
 Drill Deeper   
 Abandonment

Company MUD LICK OIL & GAS CO.  
 Address Keystone Bldg. Pittsburgh, Pa.  
 Farm M. B. Boggs  
 Tract \_\_\_\_\_ Acres 196 Lease No. \_\_\_\_\_  
 Well (Farm) No. \_\_\_\_\_ Serial No. 1-40  
 Elevation (Spirit Level) 1235  
 Quadrangle Glanville  
 County Gilmer District Center  
 Engineer W. S. Hoetj  
 Engineer's Registration No. 1227  
 File No. \_\_\_\_\_ Drawing No. \_\_\_\_\_  
 Date Dec. 1946 Scale 1"=500'

STATE OF WEST VIRGINIA  
 DEPARTMENT OF MINES  
 OIL AND GAS DIVISION  
 CHARLESTON

WELL LOCATION MAP  
 FILE NO. GIL-232-A

NOW: 091 - 30394  
 + Denotes location of well on United States Topographic Maps, scale 1 to 62,500, latitude and longitude lines being represented by border lines as shown.  
 - Denotes one inch spaces on border line of original tracing.

# WELL RECORD

(Oil or Gas Well) \_\_\_\_\_

Company F. and S. Pipe and Equipment Company

Address Charleston, W. Va.

Farm M. B. Boggs Acres 196

Location (waters) \_\_\_\_\_

Well No. 1, Serial 40 Elev. 7235

District Center County Gilmer

The surface of tract is owned in fee by \_\_\_\_\_

Mineral rights are owned by \_\_\_\_\_

Drilling commenced August 11, 1924

Drilling completed September 3, 1924

Date Shot \_\_\_\_\_ From \_\_\_\_\_ To \_\_\_\_\_

With \_\_\_\_\_

Open Flow \_\_\_\_\_ /10ths Water in \_\_\_\_\_ Inch

\_\_\_\_\_ /10ths Merc. in \_\_\_\_\_ Inch

Volume \_\_\_\_\_ Cu. Ft.

Rock Pressure \_\_\_\_\_ lbs. \_\_\_\_\_ hrs.

Oil \_\_\_\_\_ bbls., 1st 24 hrs.

Fresh water \_\_\_\_\_ feet \_\_\_\_\_ feet

Salt water \_\_\_\_\_ feet \_\_\_\_\_ feet

Casing and Tubing	Used in Drilling	Left in Well	Packers
Size			Kind of Packer
18			<u>Anchor</u>
13			Size of <u>6-5/8" x 2"</u>
10			Depth set <u>1327'</u>
8 1/4	<u>200'</u>	<u>200'</u>	
6 1/4	<u>1000'</u>	<u>1000'</u>	
5 3/16			Perf. top
3			Perf. bottom
2	<u>1936'</u>	<u>1936'</u>	Perf. top
Liners Used			Perf. bottom

CASING CEMENTED \_\_\_\_\_ SIZE \_\_\_\_\_ No. Ft. \_\_\_\_\_ Date \_\_\_\_\_

COAL WAS ENCOUNTERED AT \_\_\_\_\_ FEET \_\_\_\_\_ INCHES

\_\_\_\_\_ FEET \_\_\_\_\_ INCHES \_\_\_\_\_ FEET \_\_\_\_\_ INCHES

\_\_\_\_\_ FEET \_\_\_\_\_ INCHES \_\_\_\_\_ FEET \_\_\_\_\_ INCHES

Formation	Color	Hard or Soft	Top	Bottom	Oil, Gas or Water	Depth Found	Remarks
Big Dunkard			940	1065			
Gas Sand			1112	1215			
1st Salt Sand			1220	1290			
2nd Salt Sand			1330	1405			
			1420	1440			
3rd Salt Sand			1530	1660			
			1668	1700			
Salt Sand			1712	1745			
Maxton Sand			1815	1936			

6.1-394A

80232



SHOULD BE MADE IN TRIPPLICATE AND THE THIRD COPY AND EXTRA COPY IF REQUIRED, SHOULD BE KEPT BY THE OPERATOR OF THE WELL.

COAL OPERATOR OR OWNER  
 ADDRESS  
 COAL OPERATOR OR OWNER  
 ADDRESS  
 LEASE OR PROPERTY OWNER  
 ADDRESS

NAME OF WELL OPERATOR  
 COMPLETE ADDRESS  
 WELL AND LOCATION  
 District  
 County  
 Well No. 1, 19-10  
 Farm

STATE OF WEST VIRGINIA DIRECTOR SUPERVISING PLUGGING C. G. BROWN - MARTINSVILLE, W. VA.

**AFFIDAVIT**

STATE WEST VIRGINIA }  
 County Lincoln } SS:

I, Loye Browning and Raymond being duly sworn according to law depose and say that they are experienced in the work of plugging and filling oil and gas wells and were employed by L. J. Brown well operator, and participated in the work of plugging and filling the above well, that said work was commenced on the 17 day of November, 1950, and that the well was plugged and filled in the following manner:

BAND OR RECORD	FILLING MATERIAL		FLUID USED		CASING	
	CONTENT	FROM TO	SIZE & KIND	*** TUBES	*** LIFT IN	
1790'	crushed stone on cement	1790' - 1800'	1 1/2" cement			
1800'	crushed stone on cement	1800' - 1810'	1 1/2" cement			
1810'	crushed stone on cement	1810' - 1820'	1 1/2" cement			
1820'	crushed stone on cement	1820' - 1830'	1 1/2" cement			
1830'	crushed stone on cement	1830' - 1840'	1 1/2" cement			
1840'	crushed stone on cement	1840' - 1850'	1 1/2" cement			
1850'	crushed stone on cement	1850' - 1860'	1 1/2" cement			
1860'	crushed stone on cement	1860' - 1870'	1 1/2" cement			
1870'	crushed stone on cement	1870' - 1880'	1 1/2" cement			
1880'	crushed stone on cement	1880' - 1890'	1 1/2" cement			
1890'	crushed stone on cement	1890' - 1900'	1 1/2" cement			
1900'	crushed stone on cement	1900' - 1910'	1 1/2" cement			
1910'	crushed stone on cement	1910' - 1920'	1 1/2" cement			
1920'	crushed stone on cement	1920' - 1930'	1 1/2" cement			
1930'	crushed stone on cement	1930' - 1940'	1 1/2" cement			
1940'	crushed stone on cement	1940' - 1950'	1 1/2" cement			
1950'	crushed stone on cement	1950' - 1960'	1 1/2" cement			
1960'	crushed stone on cement	1960' - 1970'	1 1/2" cement			
1970'	crushed stone on cement	1970' - 1980'	1 1/2" cement			
1980'	crushed stone on cement	1980' - 1990'	1 1/2" cement			
1990'	crushed stone on cement	1990' - 2000'	1 1/2" cement			
2000'	crushed stone on cement	2000' - 2010'	1 1/2" cement			
2010'	crushed stone on cement	2010' - 2020'	1 1/2" cement			
2020'	crushed stone on cement	2020' - 2030'	1 1/2" cement			
2030'	crushed stone on cement	2030' - 2040'	1 1/2" cement			
2040'	crushed stone on cement	2040' - 2050'	1 1/2" cement			
2050'	crushed stone on cement	2050' - 2060'	1 1/2" cement			
2060'	crushed stone on cement	2060' - 2070'	1 1/2" cement			
2070'	crushed stone on cement	2070' - 2080'	1 1/2" cement			
2080'	crushed stone on cement	2080' - 2090'	1 1/2" cement			
2090'	crushed stone on cement	2090' - 2100'	1 1/2" cement			
2100'	crushed stone on cement	2100' - 2110'	1 1/2" cement			
2110'	crushed stone on cement	2110' - 2120'	1 1/2" cement			
2120'	crushed stone on cement	2120' - 2130'	1 1/2" cement			
2130'	crushed stone on cement	2130' - 2140'	1 1/2" cement			
2140'	crushed stone on cement	2140' - 2150'	1 1/2" cement			
2150'	crushed stone on cement	2150' - 2160'	1 1/2" cement			
2160'	crushed stone on cement	2160' - 2170'	1 1/2" cement			
2170'	crushed stone on cement	2170' - 2180'	1 1/2" cement			
2180'	crushed stone on cement	2180' - 2190'	1 1/2" cement			
2190'	crushed stone on cement	2190' - 2200'	1 1/2" cement			
2200'	crushed stone on cement	2200' - 2210'	1 1/2" cement			
2210'	crushed stone on cement	2210' - 2220'	1 1/2" cement			
2220'	crushed stone on cement	2220' - 2230'	1 1/2" cement			
2230'	crushed stone on cement	2230' - 2240'	1 1/2" cement			
2240'	crushed stone on cement	2240' - 2250'	1 1/2" cement			
2250'	crushed stone on cement	2250' - 2260'	1 1/2" cement			
2260'	crushed stone on cement	2260' - 2270'	1 1/2" cement			
2270'	crushed stone on cement	2270' - 2280'	1 1/2" cement			
2280'	crushed stone on cement	2280' - 2290'	1 1/2" cement			
2290'	crushed stone on cement	2290' - 2300'	1 1/2" cement			
2300'	crushed stone on cement	2300' - 2310'	1 1/2" cement			
2310'	crushed stone on cement	2310' - 2320'	1 1/2" cement			
2320'	crushed stone on cement	2320' - 2330'	1 1/2" cement			
2330'	crushed stone on cement	2330' - 2340'	1 1/2" cement			
2340'	crushed stone on cement	2340' - 2350'	1 1/2" cement			
2350'	crushed stone on cement	2350' - 2360'	1 1/2" cement			
2360'	crushed stone on cement	2360' - 2370'	1 1/2" cement			
2370'	crushed stone on cement	2370' - 2380'	1 1/2" cement			
2380'	crushed stone on cement	2380' - 2390'	1 1/2" cement			
2390'	crushed stone on cement	2390' - 2400'	1 1/2" cement			
2400'	crushed stone on cement	2400' - 2410'	1 1/2" cement			
2410'	crushed stone on cement	2410' - 2420'	1 1/2" cement			
2420'	crushed stone on cement	2420' - 2430'	1 1/2" cement			
2430'	crushed stone on cement	2430' - 2440'	1 1/2" cement			
2440'	crushed stone on cement	2440' - 2450'	1 1/2" cement			
2450'	crushed stone on cement	2450' - 2460'	1 1/2" cement			
2460'	crushed stone on cement	2460' - 2470'	1 1/2" cement			
2470'	crushed stone on cement	2470' - 2480'	1 1/2" cement			
2480'	crushed stone on cement	2480' - 2490'	1 1/2" cement			
2490'	crushed stone on cement	2490' - 2500'	1 1/2" cement			
2500'	crushed stone on cement	2500' - 2510'	1 1/2" cement			
2510'	crushed stone on cement	2510' - 2520'	1 1/2" cement			
2520'	crushed stone on cement	2520' - 2530'	1 1/2" cement			
2530'	crushed stone on cement	2530' - 2540'	1 1/2" cement			
2540'	crushed stone on cement	2540' - 2550'	1 1/2" cement			
2550'	crushed stone on cement	2550' - 2560'	1 1/2" cement			
2560'	crushed stone on cement	2560' - 2570'	1 1/2" cement			
2570'	crushed stone on cement	2570' - 2580'	1 1/2" cement			
2580'	crushed stone on cement	2580' - 2590'	1 1/2" cement			
2590'	crushed stone on cement	2590' - 2600'	1 1/2" cement			
2600'	crushed stone on cement	2600' - 2610'	1 1/2" cement			
2610'	crushed stone on cement	2610' - 2620'	1 1/2" cement			
2620'	crushed stone on cement	2620' - 2630'	1 1/2" cement			
2630'	crushed stone on cement	2630' - 2640'	1 1/2" cement			
2640'	crushed stone on cement	2640' - 2650'	1 1/2" cement			
2650'	crushed stone on cement	2650' - 2660'	1 1/2" cement			
2660'	crushed stone on cement	2660' - 2670'	1 1/2" cement			
2670'	crushed stone on cement	2670' - 2680'	1 1/2" cement			
2680'	crushed stone on cement	2680' - 2690'	1 1/2" cement			
2690'	crushed stone on cement	2690' - 2700'	1 1/2" cement			
2700'	crushed stone on cement	2700' - 2710'	1 1/2" cement			
2710'	crushed stone on cement	2710' - 2720'	1 1/2" cement			
2720'	crushed stone on cement	2720' - 2730'	1 1/2" cement			
2730'	crushed stone on cement	2730' - 2740'	1 1/2" cement			
2740'	crushed stone on cement	2740' - 2750'	1 1/2" cement			
2750'	crushed stone on cement	2750' - 2760'	1 1/2" cement			
2760'	crushed stone on cement	2760' - 2770'	1 1/2" cement			
2770'	crushed stone on cement	2770' - 2780'	1 1/2" cement			
2780'	crushed stone on cement	2780' - 2790'	1 1/2" cement			
2790'	crushed stone on cement	2790' - 2800'	1 1/2" cement			
2800'	crushed stone on cement	2800' - 2810'	1 1/2" cement			
2810'	crushed stone on cement	2810' - 2820'	1 1/2" cement			
2820'	crushed stone on cement	2820' - 2830'	1 1/2" cement			
2830'	crushed stone on cement	2830' - 2840'	1 1/2" cement			
2840'	crushed stone on cement	2840' - 2850'	1 1/2" cement			
2850'	crushed stone on cement	2850' - 2860'	1 1/2" cement			
2860'	crushed stone on cement	2860' - 2870'	1 1/2" cement			
2870'	crushed stone on cement	2870' - 2880'	1 1/2" cement			
2880'	crushed stone on cement	2880' - 2890'	1 1/2" cement			
2890'	crushed stone on cement	2890' - 2900'	1 1/2" cement			
2900'	crushed stone on cement	2900' - 2910'	1 1/2" cement			
2910'	crushed stone on cement	2910' - 2920'	1 1/2" cement			
2920'	crushed stone on cement	2920' - 2930'	1 1/2" cement			
2930'	crushed stone on cement	2930' - 2940'	1 1/2" cement			
2940'	crushed stone on cement	2940' - 2950'	1 1/2" cement			
2950'	crushed stone on cement	2950' - 2960'	1 1/2" cement			
2960'	crushed stone on cement	2960' - 2970'	1 1/2" cement			
2970'	crushed stone on cement	2970' - 2980'	1 1/2" cement			
2980'	crushed stone on cement	2980' - 2990'	1 1/2" cement			
2990'	crushed stone on cement	2990' - 3000'	1 1/2" cement			
3000'	crushed stone on cement	3000' - 3010'	1 1/2" cement			
3010'	crushed stone on cement	3010' - 3020'	1 1/2" cement			
3020'	crushed stone on cement	3020' - 3030'	1 1/2" cement			
3030'	crushed stone on cement	3030' - 3040'	1 1/2" cement			
3040'	crushed stone on cement	3040' - 3050'	1 1/2" cement			
3050'	crushed stone on cement	3050' - 3060'	1 1/2" cement			
3060'	crushed stone on cement	3060' - 3070'	1 1/2" cement			
3070'	crushed stone on cement	3070' - 3080'	1 1/2" cement			
3080'	crushed stone on cement	3080' - 3090'	1 1/2" cement			
3090'	crushed stone on cement	3090' - 3100'	1 1/2" cement			
3100'	crushed stone on cement	3100' - 3110'	1 1/2" cement			
3110'	crushed stone on cement	3110' - 3120'	1 1/2" cement			
3120'	crushed stone on cement	3120' - 3130'	1 1/2" cement			
3130'	crushed stone on cement	3130' - 3140'	1 1/2" cement			
3140'	crushed stone on cement	3140' - 3150'	1 1/2" cement			
3150'	crushed stone on cement	3150' - 3160'	1 1/2" cement			
3160'	crushed stone on cement	3160' - 3170'	1 1/2" cement			
3170'	crushed stone on cement	3170' - 3180'	1 1/2" cement			
3180'	crushed stone on cement	3180' - 3190'	1 1/2" cement			
3190'	crushed stone on cement	3190' - 3200'	1 1/2" cement			
3200'	crushed stone on cement	3200' - 3210'	1 1/2" cement			
3210'	crushed stone on cement	3210' - 3220'	1 1/2" cement			
3220'	crushed stone on cement	3220' - 3230'	1 1/2" cement			
3230'	crushed stone on cement	3230' - 3240'	1 1/2" cement			
3240'	crushed stone on cement	3240' - 3250'	1 1/2" cement			
3250'	crushed stone on cement	3250' - 3260'	1 1/2" cement			
3260'	crushed stone on cement	3260' - 3270'	1 1/2" cement			
3270'	crushed stone on cement	3270' - 3280'	1 1/2" cement			
3280'	crushed stone on cement	3280' - 3290'	1 1/2" cement			
3290'	crushed stone on cement	3290' - 3300'	1 1/2" cement			
3300'	crushed stone on cement	3300' - 3310'	1 1/2" cement			
3310'	crushed stone on cement	3310' - 3320'	1 1/2" cement			
3320'	crushed stone on cement	3320' - 3330'	1 1/2" cement			
3330'	crushed stone on cement	3330' - 3340'	1 1/2" cement			
3340'	crushed stone on cement	3340' - 3350'	1 1/2" cement			
3350'	crushed stone on cement	3350' - 3360'	1 1/2" cement			
3360'	crushed stone on cement	3360' - 3370'	1 1/2" cement			
3370'	crushed stone on cement	3370' - 3380'	1 1/2" cement			
3380'	crushed stone on cement	3380' - 3390'	1 1/2" cement			
3390'	crushed stone on cement					