

WW-7
8-30-06



West Virginia Department of Environmental Protection
Office of Oil and Gas

WELL LOCATION FORM: GPS

API: 47-023-00009¹⁸ WELL NO.: T 2533

FARM NAME: Ruth Evans

RESPONSIBLE PARTY NAME: Chesapeake Appalachia, LLC

COUNTY: Grant DISTRICT: Milroy

QUADRANGLE: Blackbird Knob, WV

SURFACE OWNER: Golden E. Evans

ROYALTY OWNER: Golden E. Evans

UTM GPS NORTHING: 4325783.59 (2308')

UTM GPS EASTING: 650397.42 GPS ELEVATION: 703.78

The Responsible Party named above has chosen to submit GPS coordinates in lieu of preparing a new well location plat for a plugging permit or assigned API number on the above well. The Office of Oil and Gas will not accept GPS coordinates that do not meet the following requirements:

- Datum: NAD 1983, Zone: 17 North, Coordinate Units: meters, Altitude: height above mean sea level (MSL) – meters.
- Accuracy to Datum – 3.05 meters
- Data Collection Method:
Survey grade GPS : Post Processed Differential

Real-Time Differential

Mapping Grade GPS : Post Processed Differential

Real-Time Differential

- Letter size copy of the topography map showing the well location.**

I the undersigned, hereby certify this data is correct to the best of my knowledge and belief and shows all the information required by law and the regulations issued and prescribed by the Office of Oil and Gas.

Marlene Williams Regulatory Analyst II 11-5-2018
Signature Title Date

RECEIVED
Office of Oil and Gas
NOV 14 2018
WV Department of
Environmental Protection

47-023-00018 P

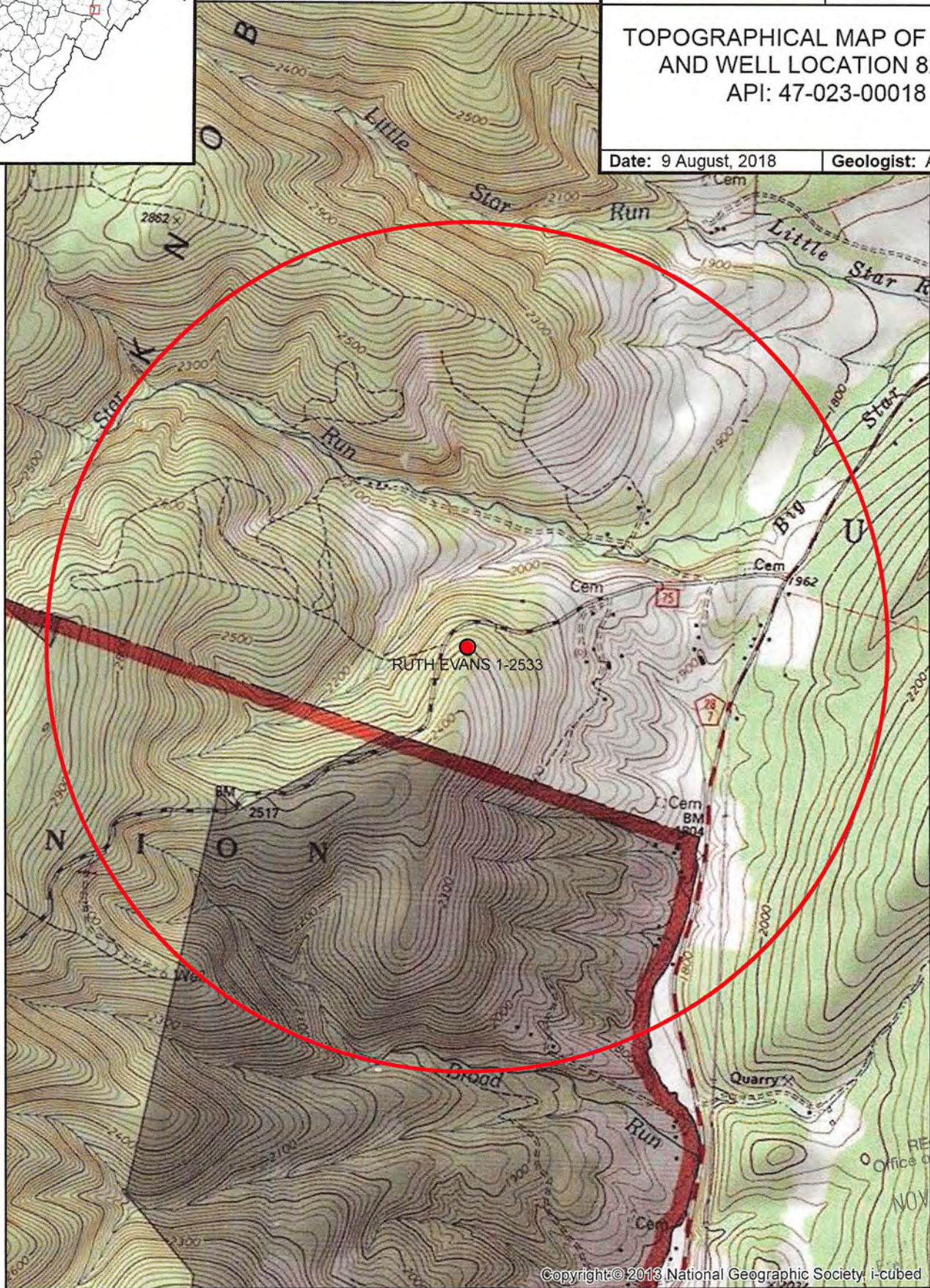
CHESAPEAKE
ENERGY

CHESAPEAKE
OPERATING,
INC.

**TOPOGRAPHICAL MAP OF ACCESS
AND WELL LOCATION 821702
API: 47-023-00018**

Date: 9 August, 2018

Geologist: APPALACHIA



RECEIVED
Office of Oil and Gas
NOV 14 2018

Copyright © 2013 National Geographic Society, i-cubed

