

WW-7
8-30-06



West Virginia Department of Environmental Protection
Office of Oil and Gas

WELL LOCATION FORM: GPS

API: 47-023-00024 WELL NO.: 1 2569

FARM NAME: Moomau

RESPONSIBLE PARTY NAME: Chesapeake Appalachia, LLC

COUNTY: Grant DISTRICT: Milroy

QUADRANGLE: Blackbird Knob, WV

SURFACE OWNER: Suedon Investments

ROYALTY OWNER: Suedon Investments

UTM GPS NORTHING: 4325953.56

UTM GPS EASTING: 649185.03 GPS ELEVATION: 841.85^m (2761')

The Responsible Party named above has chosen to submit GPS coordinates in lieu of preparing a new well location plat for a plugging permit or assigned API number on the above well. The Office of Oil and Gas will not accept GPS coordinates that do not meet the following requirements:

- 1. Datum: NAD 1983, Zone: 17 North, Coordinate Units: meters, Altitude: height above mean sea level (MSL) – meters.
- 2. Accuracy to Datum – 3.05 meters
- 3. Data Collection Method:
 Survey grade GPS ; Post Processed Differential
 Real-Time Differential
 Mapping Grade GPS ; Post Processed Differential
 Real-Time Differential
- 4. **Letter size copy of the topography map showing the well location.**

I the undersigned, hereby certify this data is correct to the best of my knowledge and belief and shows all the information required by law and the regulations issued and prescribed by the Office of Oil and Gas.

Tharles William
Signature

Regulatory Analyst II
Title

11-5-2018
Date

RECEIVED
Office of Oil and Gas

NOV 14 2018

WV Department of
Environmental Protection

47-023-00024P

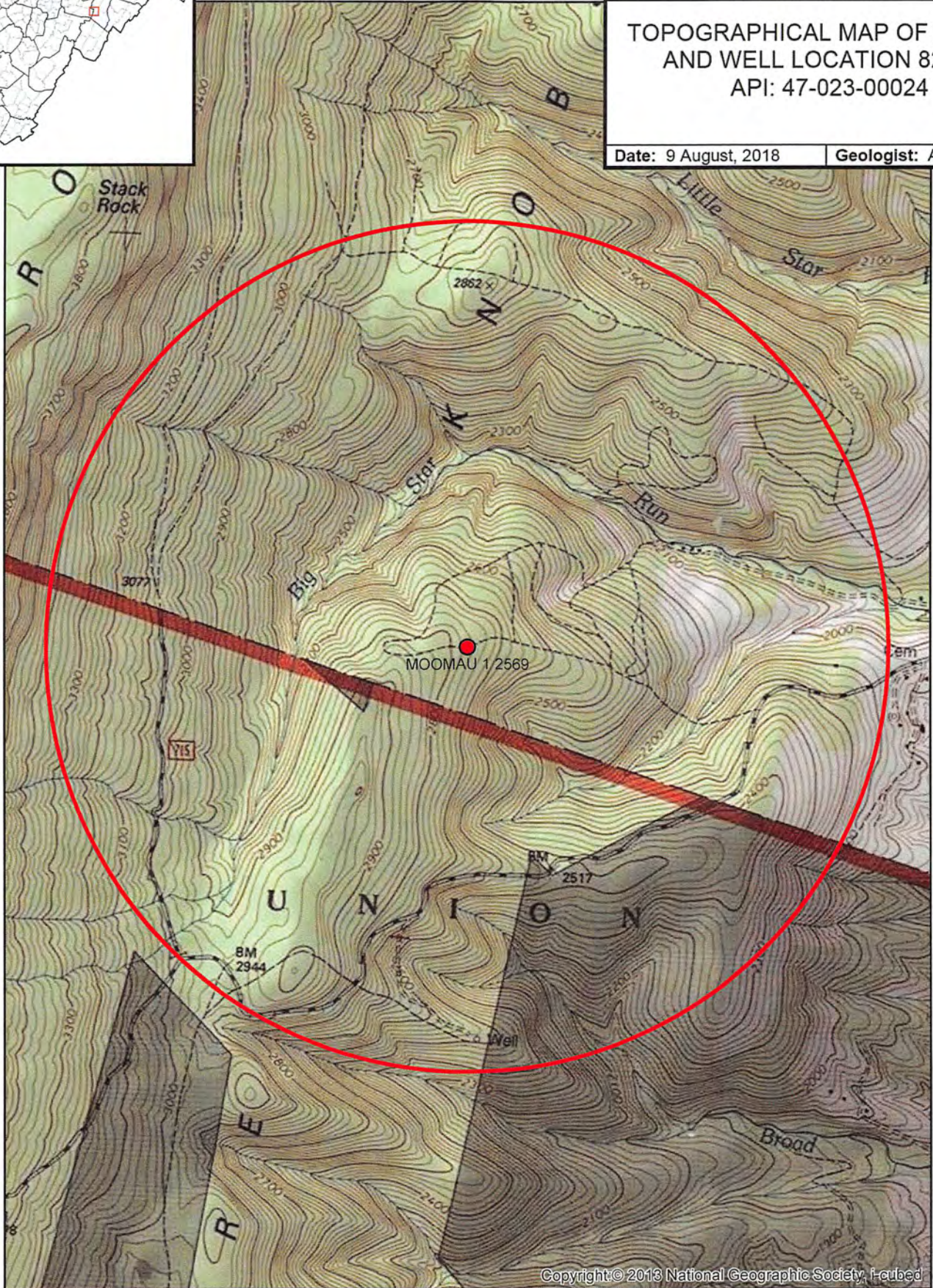
CHESAPEAKE
ENERGY

CHESAPEAKE
OPERATING,
INC.

TOPOGRAPHICAL MAP OF ACCESS
AND WELL LOCATION 821989
API: 47-023-00024

Date: 9 August, 2018

Geologist: APPALACHIA



Copyright: © 2013 National Geographic Society, Inc. and others. All rights reserved. Used by permission of Chesapeake Energy Corporation.

0 0.25 0.5 1 1.5 2

Miles 1 4 2018

WV Department of
Environmental Protection