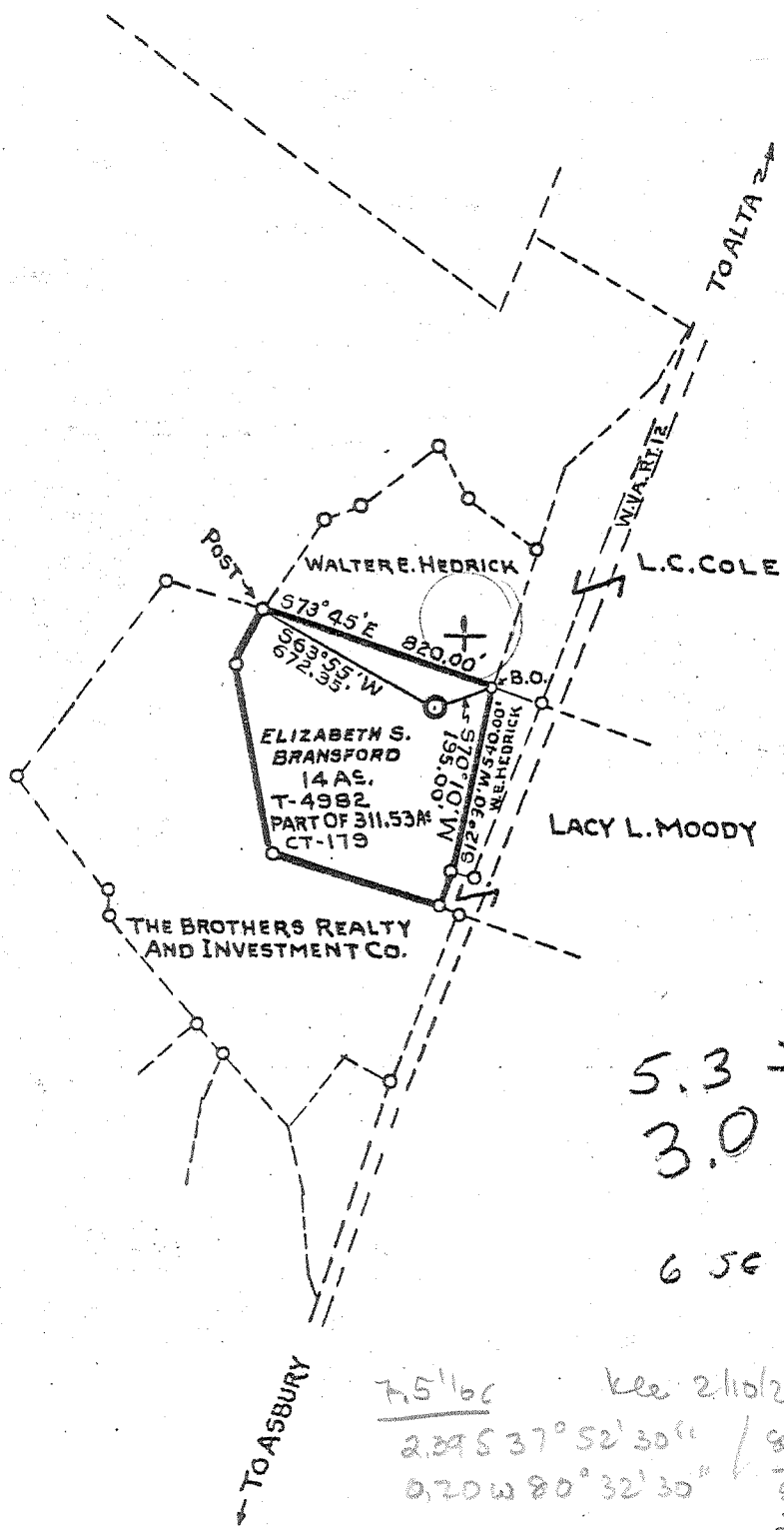


Latitude 37° 55'

Longitude 80° 30'



- New Location...
- Drill Deeper.....
- Abandonment.....

7.5' bc see 2/10/2010
 2398 37° 52' 30" / scale 15' bc
 0.20 W 80° 32' 30" 5225
 2576

Company COLUMBIAN CARBON COMPANY
 Address Box 873 CHARLESTON W.VA.
 Farm WALTER E. HEDRICK et al
 "14 AC PART OF Tract 311.53 AC" Acres 311.53 Lease No. CT-179
 Well (Farm) No. 1 Serial No. GW-1193
 Elevation (Spirit Level) 2349.42' Asbury 75' equal EC
 Quadrangle CLINTONVILLE 6 S-435 W-307
 County GREENBRIER District BLUESULPHUR
 Engineer R. B. Anderson
 Engineer's Registration No. 2074
 File No. _____ Drawing No. W-7-53
JUNE 26 1953 Scale 1" = 660'

STATE OF WEST VIRGINIA
 DEPARTMENT OF MINES
 OIL AND GAS DIVISION
 CHARLESTON

WELL LOCATION MAP
 FILE NO. GREEN-6

+ Denotes location of well on United States Topographic Maps, scale 1 to 62,500, latitude and longitude lines being represented by border lines as shown.

- Denotes one inch spaces on border line of original tracing.

H-O

✓ Deepwell

STATE OF WEST VIRGINIA
DEPARTMENT OF MINES
OIL AND GAS DIVISION //

Quadrangle Clintonville 6 SW

WELL RECORD

Oil or Gas Well dry
(KIND)

Permit No. Green-6

Company Columbian Carbon Company

Address Box 873, Charleston 23, W. Va.

Farm Walter E. Hedrick Acres 311.53

Location (waters) _____

Well No. 1 - GW-1193 Elev. 2349.42'

District Blue Sulphur County Greenbrier

The surface of tract is owned in fee by Elizabeth S. Bransford
Williamsburg Address W. Va.

Mineral rights are owned by same

Address _____

Drilling commenced 7-29-53

Drilling completed 1-26-55

Date Shot not shot From _____ To _____

With _____

Open Flow /10ths Water in _____ Inch

/10ths Merc. in _____ Inch

Volume dry hole _____ Cu. Ft.

Rock Pressure _____ lbs. _____ hrs.

Oil _____ bbls., 1st 24 hrs.

Fresh water 65' 161' 970-75' feet 1306' feet

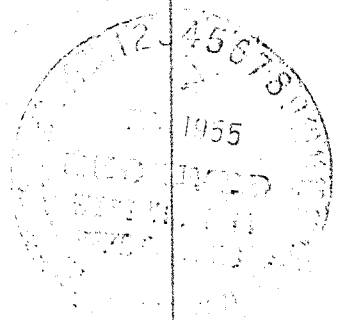
Salt water _____ feet _____ feet

Casing and Tubing	Used in Drilling	Left in Well	Packers
Size			
18"	268'	268'	Kind of Packer _____
1 3/8"	1164'9"	1164'9"	
10			Size of _____
8 1/4"	2659'3"	47'3"	Depth set _____
6 1/2"			
5 3/16"	6954'3"	6954'3"	
3			Perf. top _____
2			Perf. bottom _____
Liners Used			Perf. top _____
			Perf. bottom _____

CASING CEMENTED _____ SIZE _____ No. Ft. _____ Date _____
see reverse side

COAL WAS ENCOUNTERED AT none FEET _____ INCHES _____
FEET _____ INCHES FEET _____ INCHES
FEET _____ INCHES FEET _____ INCHES

Formation	Color	Hard or Soft	Top	Bottom	Oil, Gas or Water	Depth Found	Remarks
Soil			0	10			
Sand			10	77			
Lime			77	95			
Sand			95	103			
Slate & Sand			103	190	F. water	161'	hole full
Slate			190	200			
Lime			200	280			
Slate & Shells			280	308			
Sand			308	323			
Slate & Shells			323	333			
Sand			333	360			
Slate			360	370			
Lime			370	632			
Slate & Shells			632	850			
Lime			850	2230	F. water	1306'	1-13" blr/hr.
Slate			2230	2236			
Lime			2236	3109			
Slate & Shells			3109	3119			
Lime			3119	3174			
Shale & Shells			3174	3415			
Slate & Shells			3415	3489			
Shale			3489	3590			
Slate & Shells			3590	3630			
Lime			3630	3948			
Shale			3948	3970			
Lime			3970	4308			
Shale			4308	4323			
Lime			4323	4560			
Shale & Shells			4560	4631			
Lime			4631	4666			
Shale & Shells			4666	4683			
Lime			4683	4718			
Shale & Shells			4718	4755			
Lime			4755	4880			
Shale & Shells			4880	4925			
Lime			4925	5152			
Shale & Shells			5152	5237			
Lime			5237	5428			



(Over)

Formation	Color	Hard or Soft	Top //	Bottom	Oil, Gas or Water	Depth Found	Remarks
Shale and Shell			5428	5483			
Lime			5483	5492			
Shale and Shells			5492	5516			
Lime			5516	5557			
Shale & Shells			5557	5575			
Lime			5575	5647			
Shale & Lime			5647	5717			
Shale - Marcellus?			5717	6897			
Lime - Onondaga			6897	7130	S. water	6980' to 7130'	4 bbls./hr.
			Total depth - - - - -				
				7130'			
				485			
Cemented from 7130' to 6980' to shut off water							
<i>Examined by McFord see log strip</i>							
Casing Record							
16" cemented in							
13-3/8" cemented in							
5-1/2" cemented in							
						6897	
						2349	
						<u>4548</u>	

Date February 3, 1955

APPROVED Columbian Carbon Company Owner

By W. S. Moore, Engineer
(Title)

REPRODUCTION OF NUMBER
OF COPIES OF THIS REPORT