

2) TOPO QUADRANGLE IS FORK MOUNTAIN

(+) DENOTES LOCATION OF WELL ON UNITED STATES TOPOGRAPHIC

FILE NO. W10-290-1813
 DRAWING NO. W10-290-A29
 SCALE 1"=1000'
 MINIMUM DEGREE OF ACCURACY 1:2500
 PROVEN SOURCE OF ELEVATION GPS
GLOBAL POSITIONING SYSTEM

I, THE UNDERSIGNED, HEREBY CERTIFY THAT THIS PLAT IS CORRECT TO THE BEST OF MY KNOWLEDGE AND BELIEF AND SHOWS ALL THE INFORMATION REQUIRED BY LAW AND THE REGULATIONS ISSUED AND PRESCRIBED BY THE DIVISION OF ENVIRONMENTAL PROTECTION.

(SIGNED) [Signature]
 PROFESSIONAL SURVEYOR No. 1841



INDEP
 OFFICE OF OIL AND GAS
 1356 HANSFORD ST.
 CHARLESTON, WV 25301



DATE JANUARY 2011
 OPERATOR'S WELL NO. POSEF 2 - 1M
 API WELL NO.

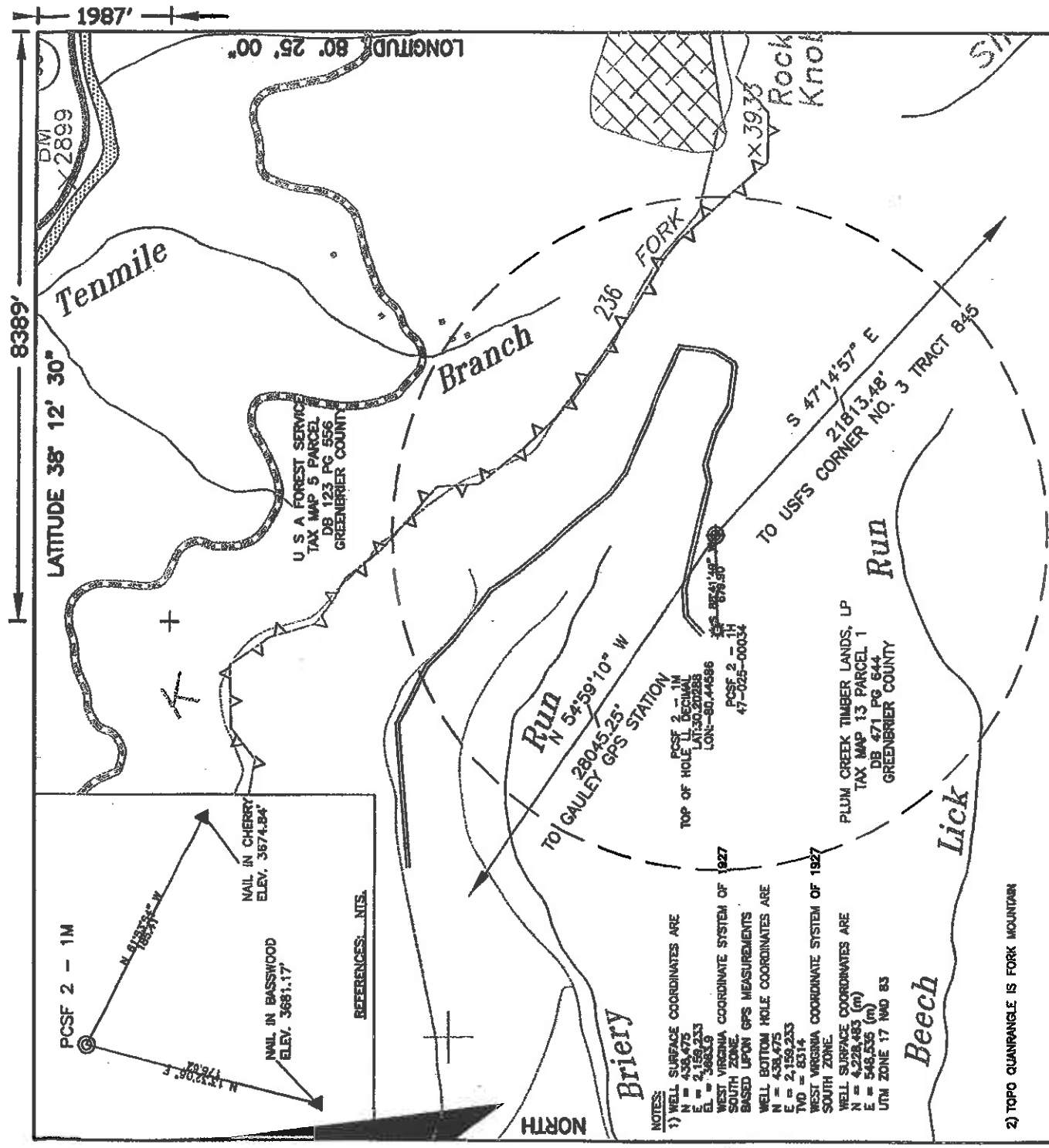
47 025 00037
~~STATE OF WEST VIRGINIA~~
CANCELLED

WELL TYPE: OIL GAS CBM LIQUID INJECTION WASTE DISPOSAL
 (IF "GAS,") PRODUCTION STORAGE DEEP SHALLOW
 LOCATION: ELEVATION 3662 ± WATERSHED SOUTH FORK OF CHERRY RIVER
 DISTRICT FALLING SPRINGS COUNTY GREENBRIER
 QUADRANGLE FORK MOUNTAIN ACREAGE 21527
 SURFACE OWNER PLUM CREEK TIMBERLANDS, LP LEASE ACREAGE 21527
 OIL & GAS ROYALTY OWNER HIGHLAND RESOURCES INC., & BRC APPALACHIAN MINERALS I, LLC., & OXY USA, INC.

PROPOSED WORK: DRILL CONVERT DRILL DEEPER REDRILL FRACTURE OR STIMULATE
 PLUG OFF OLD FORMATION PERFORATE NEW FORMATION OTHER PHYSICAL CHANGE
 IN WELL (SPECIFY) DRILL MICROSEISMIC OBSERVATION WELL
 PLUG AND ABANDON CLEAN OUT AND REPLUG
 TARGET FORMATION Marcellus Shale

ESTIMATED DEPTH 8014' MD 8014' TVD

WELL OPERATOR BRC OPERATING COMPANY, LLC DESIGNATED AGENT MARC MONTELEONE
 ADDRESS 200 CRESCENT COURT, SUITE 200 ADDRESS 500 QUARRIER STREET
DALLAS, TX 75201 CHARLESTON, WV 25325
11/29/2013



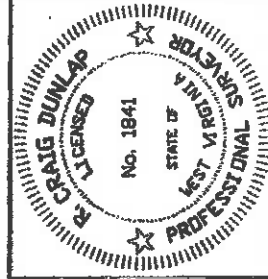
2) TOPO QUADRANGLE IS FORK MOUNTAIN

(+) DENOTES LOCATION OF WELL ON UNITED STATES TOPOGRAPHIC

FILE NO. W10-290-1813
 DRAWING NO. W10-290-A29
 SCALE 1"=1000'
 MINIMUM DEGREE OF
 ACCURACY 1:2500
 PROVEN SOURCE OF
 ELEVATION GPS
GLOBAL POSITIONING SYSTEM

I, THE UNDERSIGNED, HEREBY CERTIFY THAT THIS PLAN IS CORRECT TO THE BEST OF MY KNOWLEDGE AND BELIEF AND SHOWS ALL THE INFORMATION REQUIRED BY LAW AND THE REGULATIONS ISSUED AND PRESCRIBED BY THE DIVISION OF ENVIRONMENTAL PROTECTION.

(SIGNED) [Signature]
 PROFESSIONAL SURVEYOR No. 1841



WVDEP
 OFFICE OF OIL AND GAS
 1356 HANSFORD ST.
 CHARLESTON, WV 25301



DATE JANUARY 2011
 OPERATOR'S WELL NO. PCSF 2 - 1M
 API WELL NO. 47-025-00037 H

WELL TYPE: OIL GAS CBM LIQUID INJECTION WASTE DISPOSAL
 (IF "GAS,") PRODUCTION STORAGE DEEP SHALLOW
 LOCATION: ELEVATION 3664± WATERSHED SOUTH FORK OF CHERRY RIVER
 DISTRICT FALLING SPRINGS COUNTY GREENBRIER
 QUADRANGLE FORK MOUNTAIN ACREAGE 21527
 SURFACE OWNER PLUM CREEK TIMBERLANDS, LP LEASE ACREAGE 21527
 OIL & GAS ROYALTY OWNER HIGHLAND RESOURCES INC., & BRC APPALACHIAN MINERALS I, L.L.C., & OXY USA, INC.

PROPOSED WORK: DRILL CONVERT DRILL DEEPER REDRILL FRACTURE OR STIMULATE
 PLUG OFF OLD FORMATION PERFORATE NEW FORMATION OTHER PHYSICAL CHANGE
 IN WELL (SPECIFY) DRILL MICROSEISMIC OBSERVATION WELL
 PLUG AND ABANDON CLEAN OUT AND REPLUG
 TARGET FORMATION Marcellus Shale
 ESTIMATED DEPTH 8014' MD 8014' TVD

WELL OPERATOR BRC OPERATING COMPANY, LLC DESIGNATED AGENT MARC MONTELEONE
 ADDRESS 200 CRESCENT COURT, SUITE 200 ADDRESS 600 QUARRIER STREET
DALLAS, TX 75201 CHARLESTON, WV 25325

FEB 25 2011