

(+) DENOTES LOCATION OF WELL ON UNITED STATES TOPOGRAPHIC

FILE NO. W10-290-1813
 DRAWING NO. W10-290-A21
 SCALE 1"=1000'
 MINIMUM DEGREE OF ACCURACY 1:2500
 PROVEN SOURCE OF ELEVATION GPS
GLOBAL POSITIONING SYSTEM

I THE UNDERSIGNED, HEREBY CERTIFY THAT THIS PLAT IS CORRECT TO THE BEST OF MY KNOWLEDGE AND BELIEF AND SHOWS ALL THE INFORMATION REQUIRED BY LAW AND THE REGULATIONS ISSUED AND PRESCRIBED BY THE DIVISION OF ENVIRONMENTAL PROTECTION.

(SIGNED) R. G. Dunlap
 PROFESSIONAL SURVEYOR No. 1841



WVDEP
OFFICE OF OIL AND GAS
1356 HANSFORD ST.
CHARLESTON, WV 25301

DATE MARCH 21 2011
 OPERATOR'S WELL NO. PCSF 1 - 1H
 API WELL NO. 47-025-00038 HP
 STATE COUNTY PERMIT

WELL TYPE: OIL GAS CBM LIQUID INJECTION WASTE DISPOSAL
 (IF "GAS,") PRODUCTION STORAGE DEEP SHALLOW

LOCATION: ELEVATION 3800 ± WATERSHED SOUTH FORK OF CHERRY RIVER
 DISTRICT FALLING SPRINGS COUNTY GREENBRIER
 QUADRANGLE FORK MOUNTAIN ACREAGE 21527

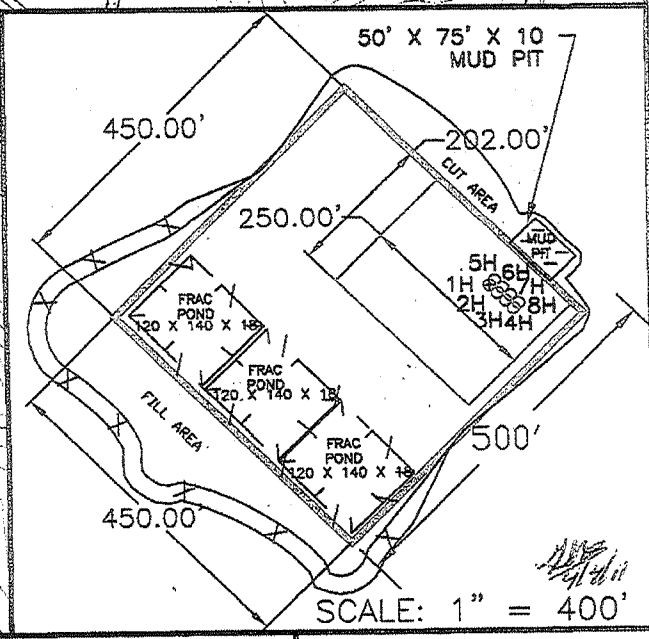
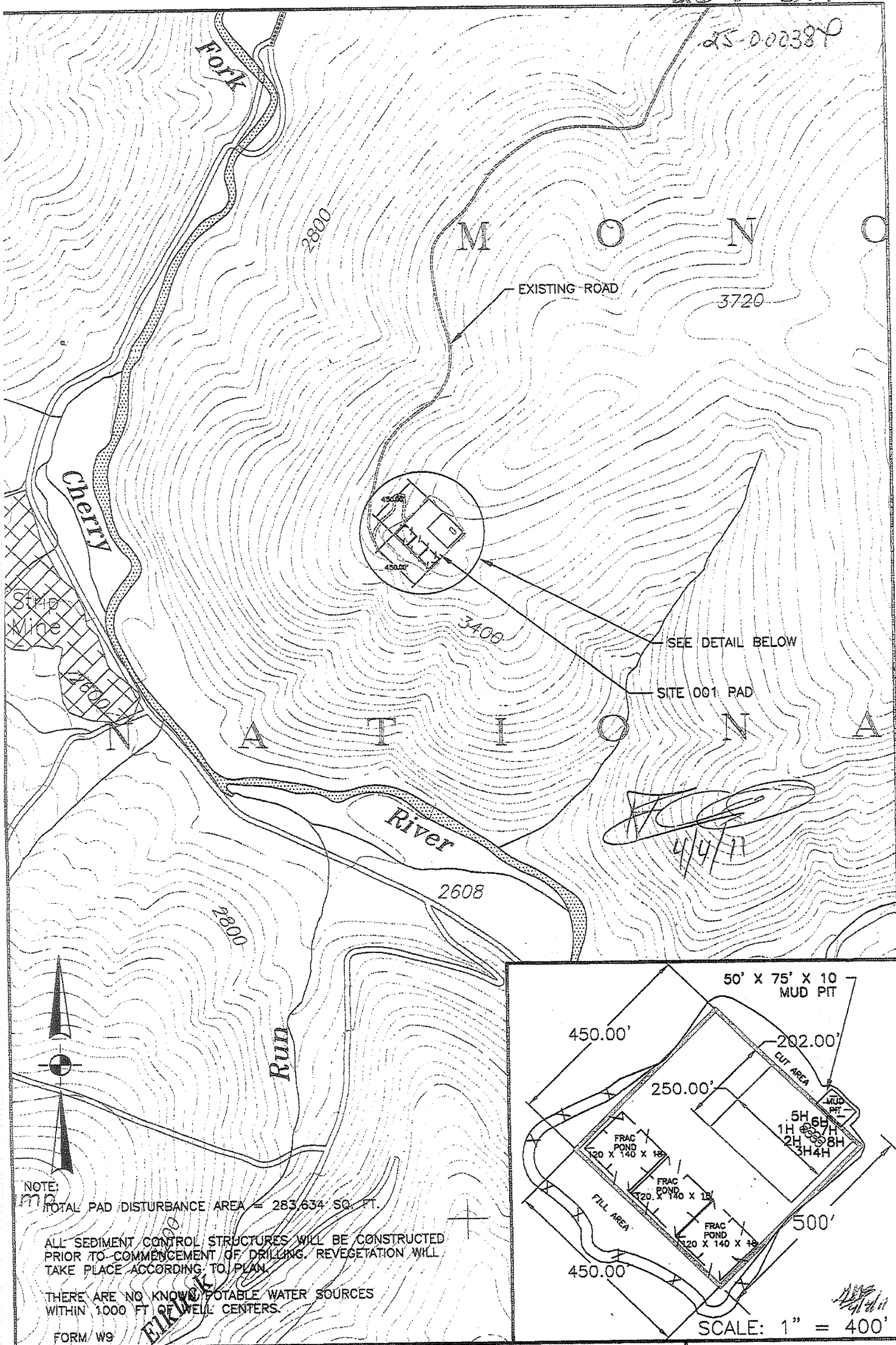
SURFACE OWNER PLUM CREEK TIMBERLANDS, LP LEASE ACREAGE 21527
 OIL & GAS ROYALTY OWNER HIGHLAND RESOURCES INC., & BRC APPALACHIAN MINERALS I, LLC, & OXY USA, INC.

PROPOSED WORK: DRILL CONVERT DRILL DEEPER REDRILL FRACTURE OR STIMULATE
 PLUG OFF OLD FORMATION PERFORATE NEW FORMATION OTHER PHYSICAL CHANGE
 IN WELL (SPECIFY) _____
 PLUG AND ABANDON CLEAN OUT AND REPLUG

TARGET FORMATION Marcellus Shale
 ESTIMATED DEPTH TVD = 8060' MD = 12930'

WELL OPERATOR BRC OPERATING COMPANY, LLC DESIGNATED AGENT MARC MONTELEONE
 ADDRESS 200 CRESCENT COURT, SUITE 200 ADDRESS 600 QUARRIER STREET
DALLAS, TX 75201 CHARLESTON, WV 25325

25-000387



Alliance Consulting, Inc.
 Engineers
 Constructors
 Scientists
 BECKLEY, WV (304) 255-0491
 SUMMERSVILLE, WV (304) 883-2360
 cdunlap@acci-wv.com

SITE PLAN MAP
 PLUM CREEK SOUTH FORK SITE 001 WELLS
 1H, 2H, 3H, 4H, 5H, 6H, 7H AND 8H
 NEAR RICHWOOD, GREENBRIER COUNTY, WEST VIRGINIA
 DRAWING NUMBER: W10-290-A42
 SCALE: 1" = 1000'
 FORK MOUNTAIN QUAD.

DRAWN BY	RCD
CHECKED BY	RCD
APPROVED BY	RCD

PREPARED FOR
BRC OPERATING CO. LLC.
 200 CRESCENT COURT
 SUITE 200
 DALLAS, TEXAS 75201
 06/15/2012