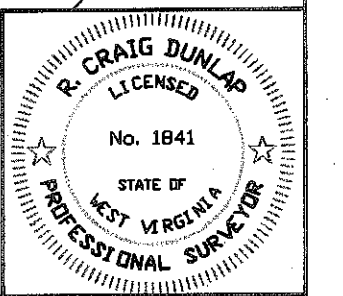


FILE NO. W10-290-1813  
 DRAWING NO. W10-290-A22  
 SCALE 1"=1000'  
 MINIMUM DEGREE OF ACCURACY 1:2500  
 PROVEN SOURCE OF ELEVATION GPS  
GLOBAL POSITIONING SYSTEM

I THE UNDERSIGNED, HEREBY CERTIFY THAT THIS PLAT IS CORRECT TO THE BEST OF MY KNOWLEDGE AND BELIEF AND SHOWS ALL THE INFORMATION REQUIRED BY LAW AND THE REGULATIONS ISSUED AND PRESCRIBED BY THE DIVISION OF ENVIRONMENTAL PROTECTION.

(SIGNED) R. Craig Dunlap  
 PROFESSIONAL SURVEYOR No. 1841



WVDEP  
 OFFICE OF OIL AND GAS  
 1356 HANSFORD ST.  
 CHARLESTON, WV 25301

DATE MARCH 21, 2011  
 OPERATOR'S WELL NO. PCSF 1 - 2H  
 API WELL NO. 47-025-00039PP  
 STATE COUNTY PERMIT

WELL TYPE: OIL    GAS     CBM    LIQUID INJECTION    WASTE DISPOSAL     
 (IF "GAS,") PRODUCTION    STORAGE    DEEP    SHALLOW

LOCATION: ELEVATION 3600± WATERSHED SOUTH FORK OF CHERRY RIVER  
 DISTRICT FALLING SPRINGS COUNTY GREENBRIER  
 QUADRANGLE FORK MOUNTAIN ACREAGE 21527

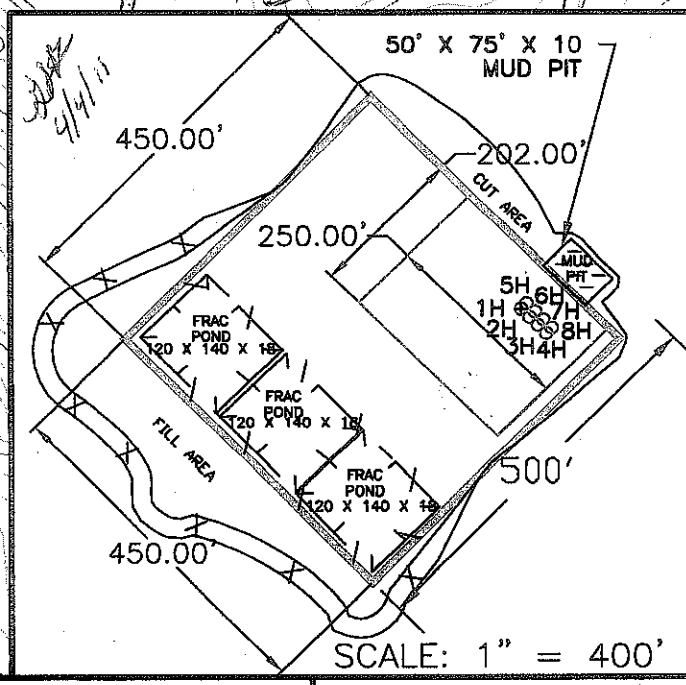
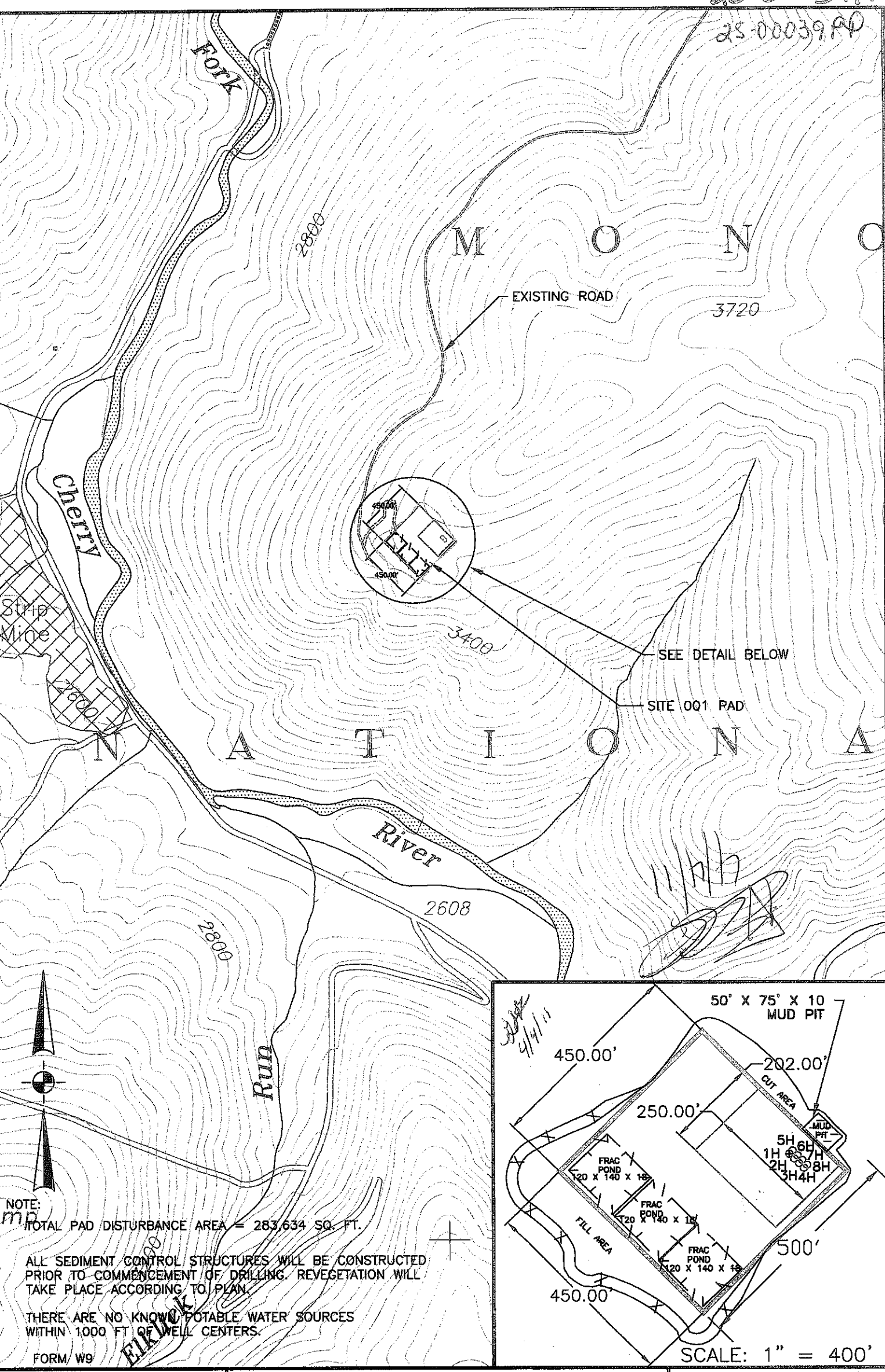
SURFACE OWNER PLUM CREEK TIMBERLANDS, LP LEASE ACREAGE 21527  
 OIL & GAS ROYALTY OWNER HIGHLAND RESOURCES INC., & BRC APPALACHIAN MINERALS I, LLC., & OXY USA, INC.

PROPOSED WORK: DRILL  CONVERT    DRILL DEEPER    REDRILL    FRACTURE OR STIMULATE   
 PLUG OFF OLD FORMATION    PERFORATE NEW FORMATION    OTHER PHYSICAL CHANGE     
 IN WELL (SPECIFY)     
 PLUG AND ABANDON    CLEAN OUT AND REPLUG   

TARGET FORMATION Marcellus Shale  
 ESTIMATED DEPTH TVD = 8060' MD = 12930'

WELL OPERATOR BRC OPERATING COMPANY, LLC DESIGNATED AGENT MARC MONTELEONE  
 ADDRESS 200 CRESCENT COURT, SUITE 200 ADDRESS 600 QUARRIER STREET  
DALLAS, TX 75201 CHARLESTON, WV 25325 04/13/2012

25-0003711  
25-0003900



NOTE:  
mp  
TOTAL PAD DISTURBANCE AREA = 283,634 SQ. FT.

ALL SEDIMENT CONTROL STRUCTURES WILL BE CONSTRUCTED PRIOR TO COMMENCEMENT OF DRILLING. REVEGETATION WILL TAKE PLACE ACCORDING TO PLAN.

THERE ARE NO KNOWN POTABLE WATER SOURCES WITHIN 1000 FT OF WELL CENTERS.

FORM W9

**Alliance Consulting, Inc.**  
Engineers  
Constructors  
Scientists  
beckley, WV (304) 255-0491  
summersville, WV (304) 883-2380  
cdunlap@aci-wv.com

**SITE PLAN MAP**  
PLUM CREEK SOUTH FORK SITE 001 WELLS  
1H, 2H, 3H, 4H, 5H, 6H, 7H AND 8H  
NEAR RICHHOOD, GREENBRIER COUNTY, WEST VIRGINIA

DRAWING NUMBER	SCALE: 1" = 1000'	DRAWN BY	RCD
W10-290-A42	FORK MOUNTAIN QUAD.	CHECKED BY	RCD
		APPROVED BY	RCD

PREPARED FOR  
BRC OPERATING CO. LLC.  
200 CRESCENT COURT  
SUITE 200  
DALLAS, TEXAS 75201  
04/13/2012