

PCSF 1 - ON BOTTLER HOLE
WEST VIRGINIA COORDINATE SYSTEM OF 1927
SOUTH ZONE
BASED UPON GPS MEASUREMENTS
N = 431.849
E = 2,186.023

PCSF 1 - ON BOTTOM HOLE
LATITUDE 36°57'19.10\"/>

PCSF 1 - ON WEST VIRGINIA COORDINATE SYSTEM OF 1927
SOUTH ZONE
BASED UPON GPS MEASUREMENTS
N = 431.849
E = 2,186.023

PCSF 1 - ON LANDING POINT
LATITUDE 36°57'19.10\"/>

(+) DENOTES LOCATION OF WELL ON UNITED STATES TOPOGRAPHIC

FILE NO. W10-280-1813
DRAWING NO. W10-280-228
SCALE 1"=1000'
MINIMUM DEGREE OF ACCURACY 1:2500
PROVEN SOURCE OF ELEVATION GPS
GLOBAL POSITIONING SYSTEM

I, THE UNDERSIGNED, HEREBY CERTIFY THAT THIS PLAN IS CORRECT TO THE BEST OF MY KNOWLEDGE AND BELIEF AND SHOWS ALL THE INFORMATION REQUIRED BY LAW AND THE REGULATIONS ISSUED AND PRESCRIBED BY THE DIVISION OF ENVIRONMENTAL PROTECTION.

(SIGNED) *R. S. [Signature]*

PROFESSIONAL SURVEYOR No. 1841



WADEP
OFFICE OF OIL AND GAS
1366 HANSFORD ST.
CHARLESTON, WV 25301

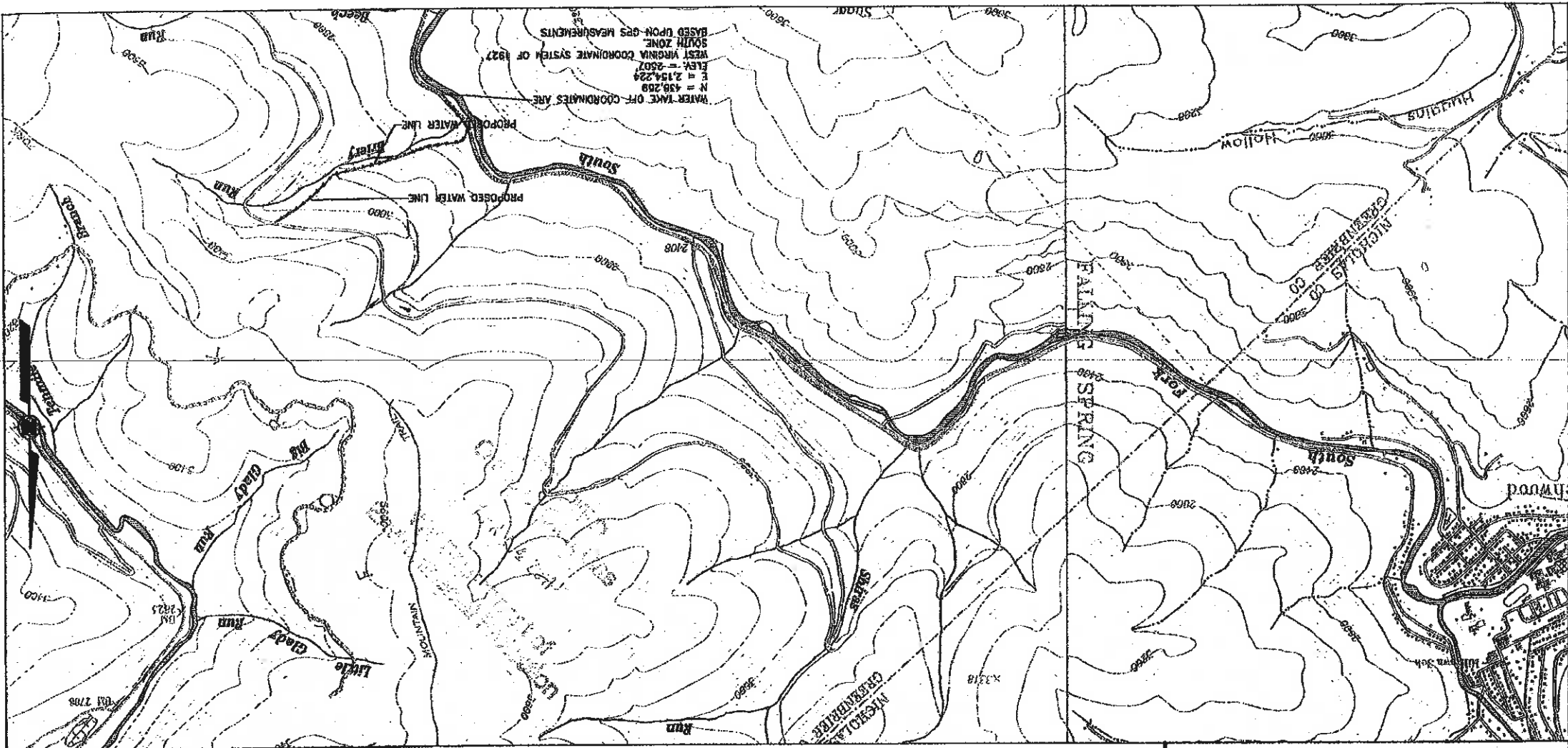


DATE MARCH 21 2011
OPERATOR'S WELL NO. POSE 1 - RH
API WELL NO.


47-025-0004H
CANCELLED

WELL TYPE: OIL GAS CBM LIQUID INJECTION WASTE DISPOSAL
(IF "GAS,") PRODUCTION STORAGE DEEP SHALLOW
LOCATION: ELEVATION 3600 ± WATERSHED SOUTH FORK OF CHERRY RIVER
DISTRICT FALLING SPRINGS COUNTY GREENBRIER
QUADRANGLE FORK MOUNTAIN ACREAGE 21527
SURFACE OWNER PLUM CREEK TIMBERLANDS, LP LEASE ACREAGE 21527
OIL & GAS ROYALTY OWNER HIGHLAND RESOURCES, INC. & BRC APPALACHIAN MINERALS I, L.L.C., & OXY USA, INC.
PROPOSED WORK: DRILL CONVERT DRILL DEEPER REDRILL FRACTURE OR STIMULATE
PLUG OFF OLD FORMATION PERFORATE NEW FORMATION OTHER PHYSICAL CHANGE
IN WELL (SPECIFY)
PLUG AND ABANDON CLEAN OUT AND REPLUG
TARGET FORMATION Marcellus Shale
ESTIMATED DEPTH TVD = 8060' MD = 12932'

WELL OPERATOR BRC OPERATING COMPANY, LLC DESIGNATED AGENT MARC MONTELEONE
ADDRESS 200 CRESCENT COURT, SUITE 200 ADDRESS 900 QUARRIER STREET
DALLAS, TX 75201 CHARLESTON, WV 25325
10/26/2013



WATER TAKE OFF COORDINATES ARE
 N = 436,269
 E = 2,154,224
 ELEV. = 2507
 WEST VIRGINIA COORDINATE SYSTEM OF 1927
 SOUTH ZONE
 BASED UPON GPS MEASUREMENTS

<p>FORM W-9 PLUM CREEK SOUTH FORK ROAD LOCATION PCSF 1 NEAR RICHWOOD, GREENBRIER COUNTY, WEST VIRGINIA PREPARED FOR BRC OPERATING CO. LLC. 200 CRESENT CT, SUITE 200, DALLAS, TEXAS 75201</p>		<p>Scientists SUMMERSVILLE, WV (304) 883-2360</p>	
<p>SCALE: 1" = 2000'</p>		<p>Constructors BECKLEY, WV (304) 255-0491</p>	
DRAWN BY	RCD	<p>Alliance Consulting, Inc.</p> 	
CHECKED BY	RCD		
APPROVED BY	RCD		
DRAWING NUMBER	W10-290-A40	<p>FIGURE 1</p>	

AS-00041 H